



# Dell Inspiron 15 3541 Battery Replacement

This guide will explain to the user how to replace a faulty battery inside of the laptop.

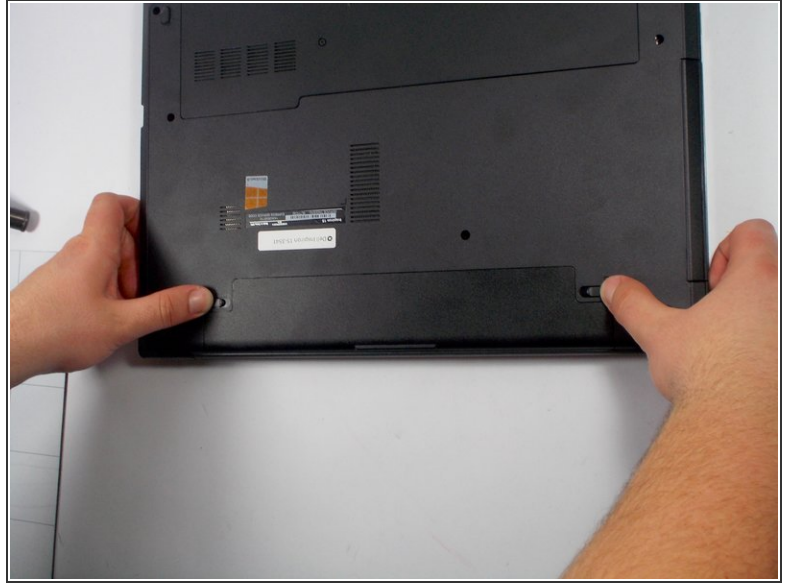
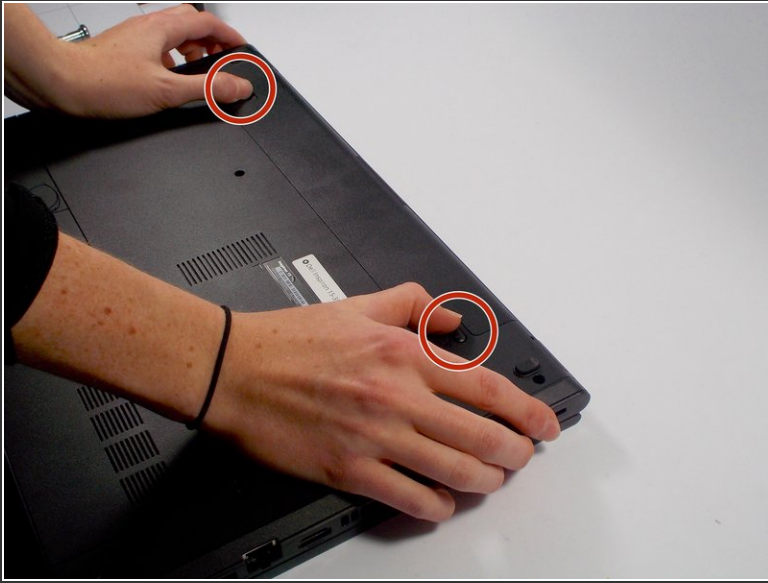
Written By: Allison



## INTRODUCTION

Before starting this guide, make sure your laptop is powered completely off and detached from the power cable. This replacement will be helpful to learn for replacing most other components of the laptop, as well as, replacing the battery itself.

## Step 1 — Battery




 Make sure your laptop is powered off completely and is not connected to the charger.

- Close the laptop and place it so that the back of the screen is lying flat on your work surface.
- Slide both of the battery-release latches towards the outer edges of the laptop to unlock the battery flap.

## Step 2



- Lift the battery at an angle using your fingertips and remove it from the laptop.
-  Press and hold the power button for 5 seconds. This ensures that any remaining power will drain out of the computer.

To reassemble your device, follow these instructions in reverse order.