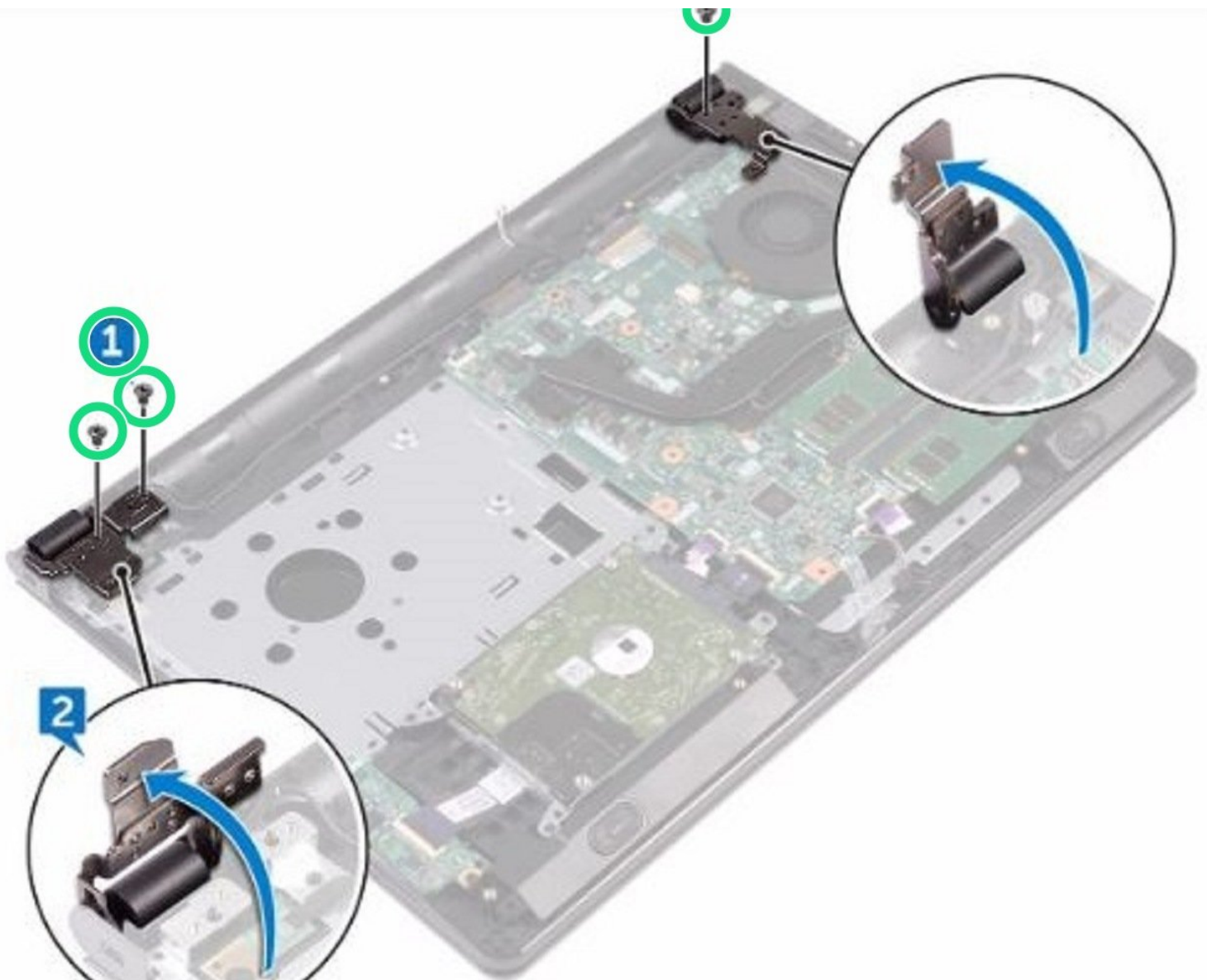




# Dell Inspiron 15 3567 Display Assembly Replacement

Written By: Terrence15



---

## INTRODUCTION

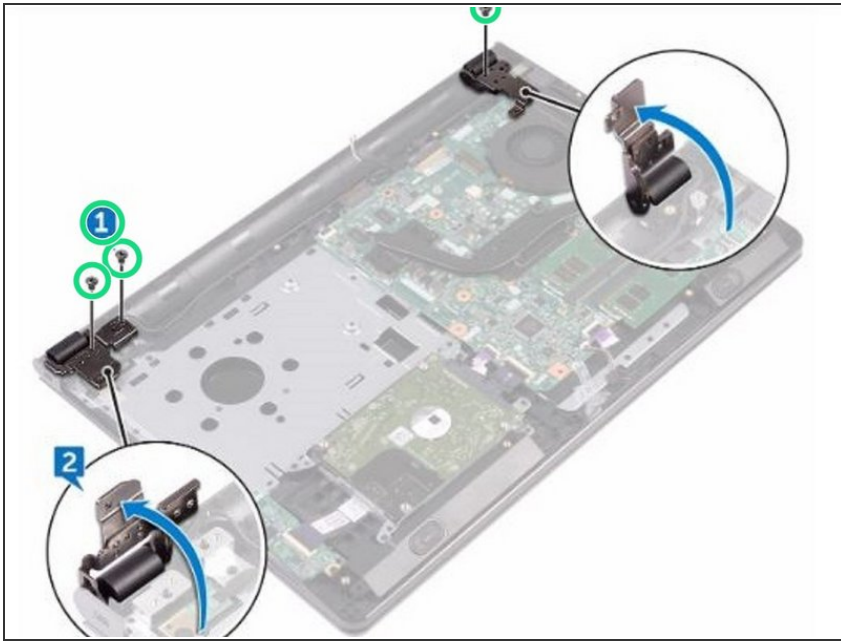
In this guide, we will be showing you how to remove and replace the Display Assembly.



### TOOLS:

- [Phillips #0 Screwdriver](#) (1)
-

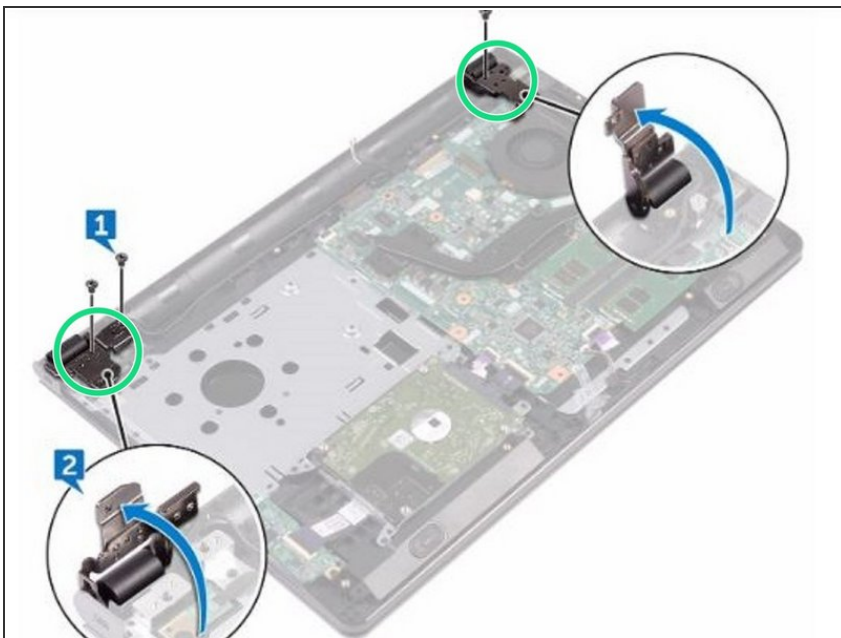
## Step 1 — Remove the Screws



**⚠ WARNING:** Before working inside your computer, read the safety information that shipped with your computer and follow the steps in [Before Working Inside Your Computer](#). After working inside your computer, follow the instructions in [After Working Inside Your Computer](#).

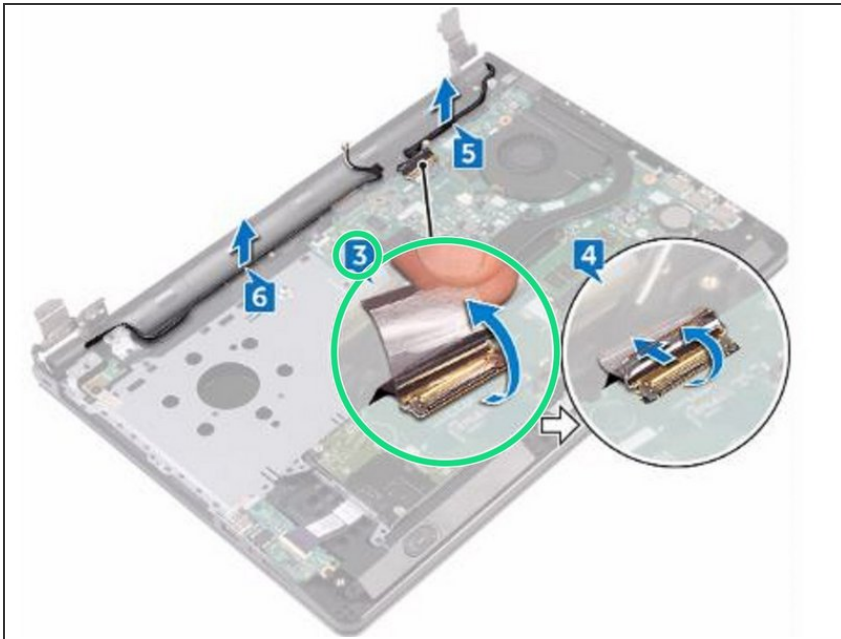
- Remove the three screws (2.5x8) that secure the display hinges to the palm-rest assembly.

## Step 2 — Open the Display Hinges



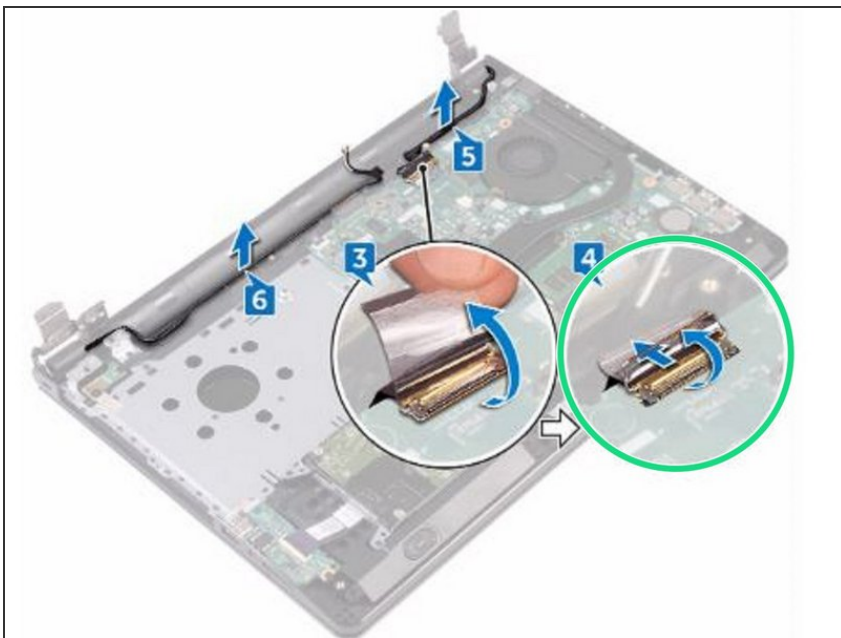
- Open the display hinges to an angle of 90 degrees.

### Step 3 — Peel the Tape



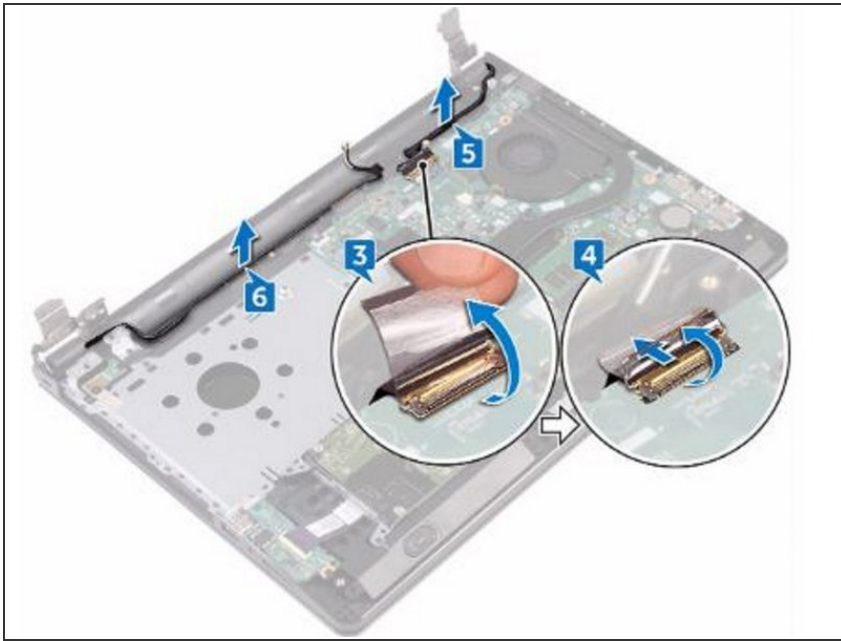
- Peel the tape that secures the display cable to the palm-rest assembly.

### Step 4 — Open the Latch



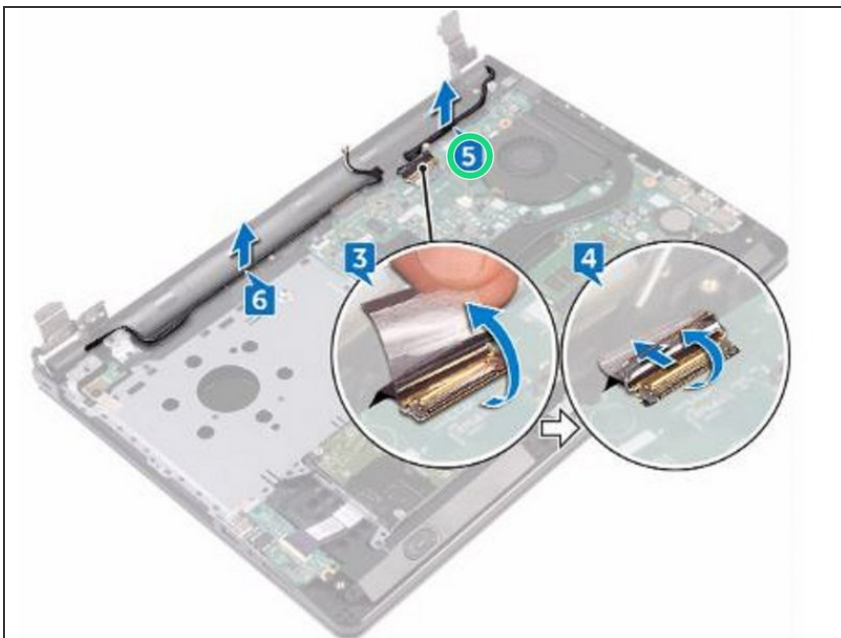
- Open the latch and disconnect the display cable.

## Step 5 — Note the Display Cable



- Note the display cable routing and remove the display cable from the routing guides on the palm-rest assembly.

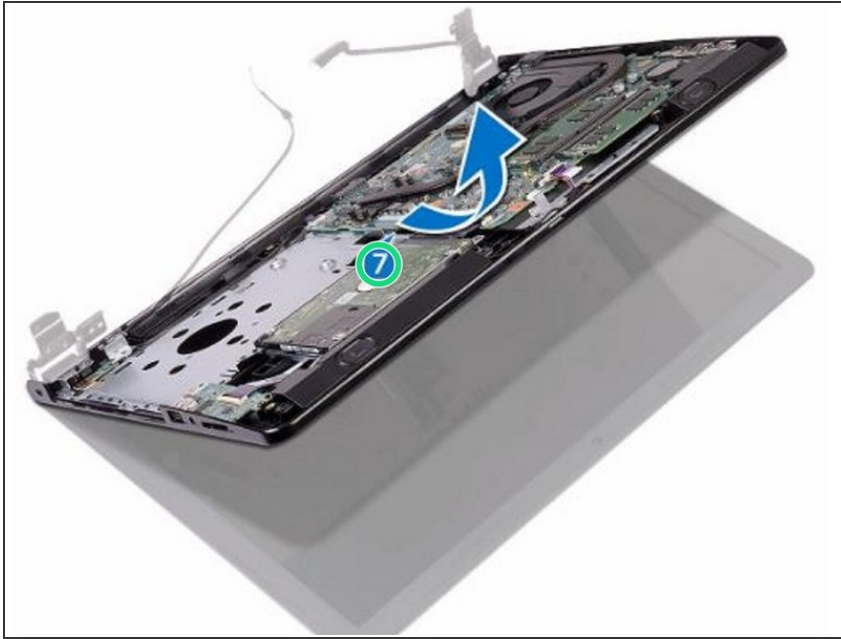
## Step 6 — Note the Antenna Cable



- Note the antenna cable routing and remove the cable from its routing guides on the palm-rest assembly.



## Step 7 — Open the Palm Rest Assembly



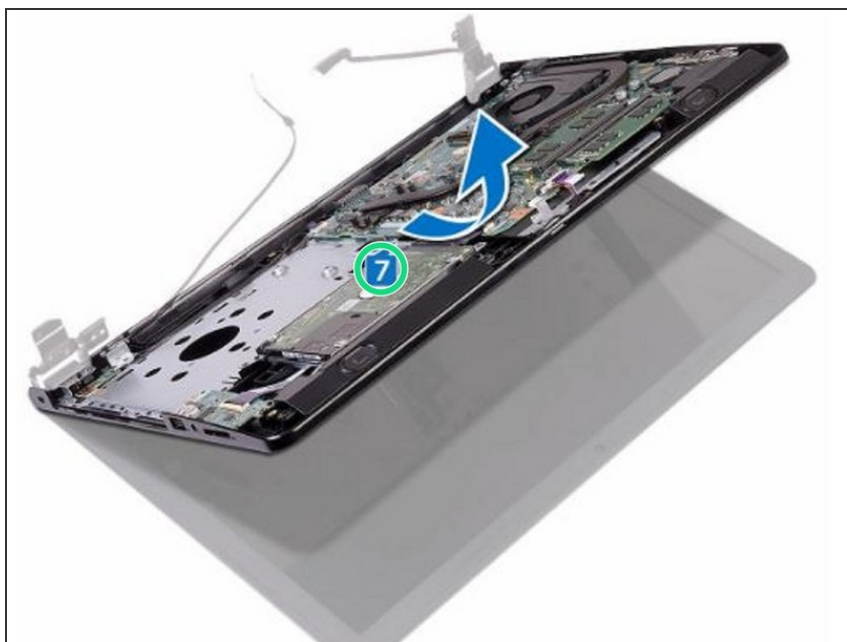
- Open the palm-rest assembly at an angle and slide it off the display assembly.

## Step 8 — Placing the Display Assembly



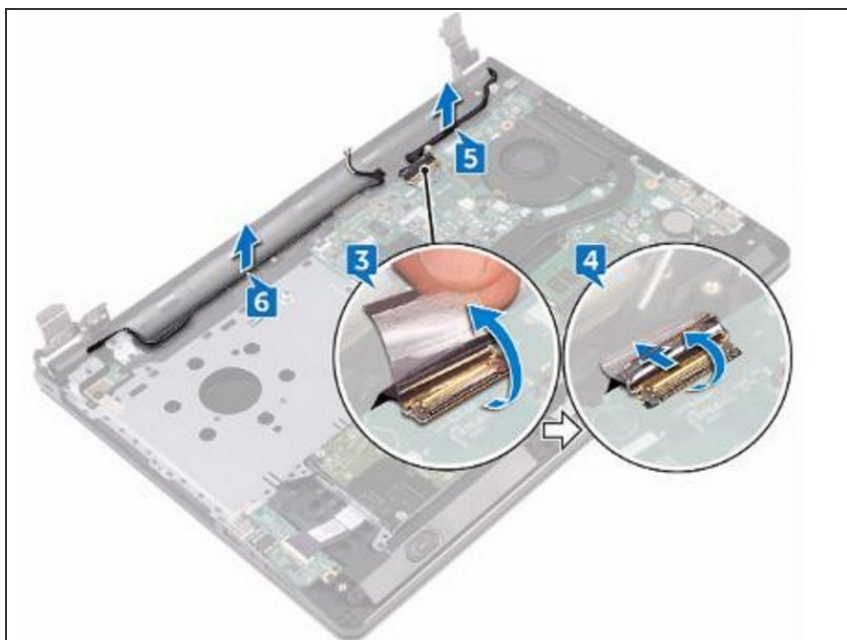
- Place the **NEW** display assembly on a clean, flat surface.

## Step 9 — Placing the Palm-Rest Assembly



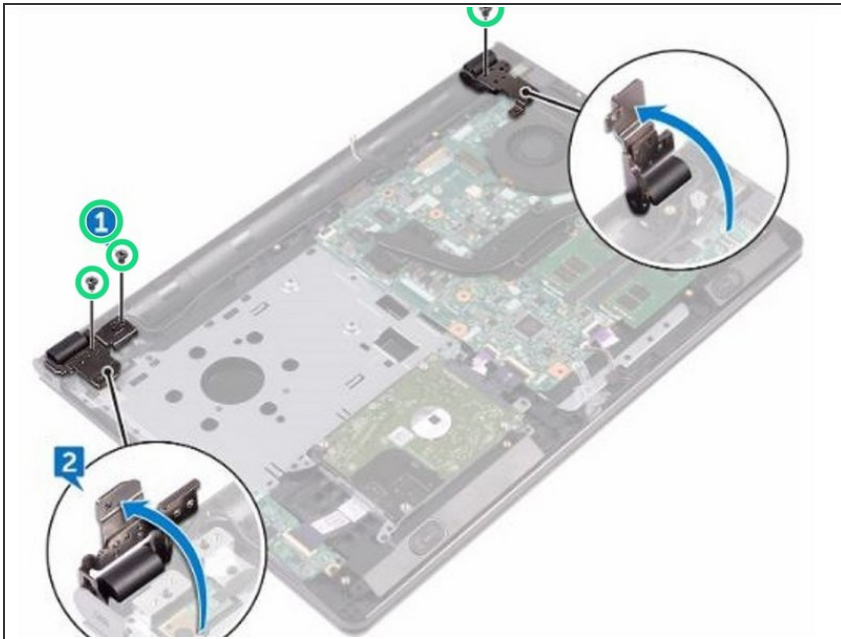
- Place the palm-rest assembly on the display assembly.

## Step 10 — Close the Display Hinges



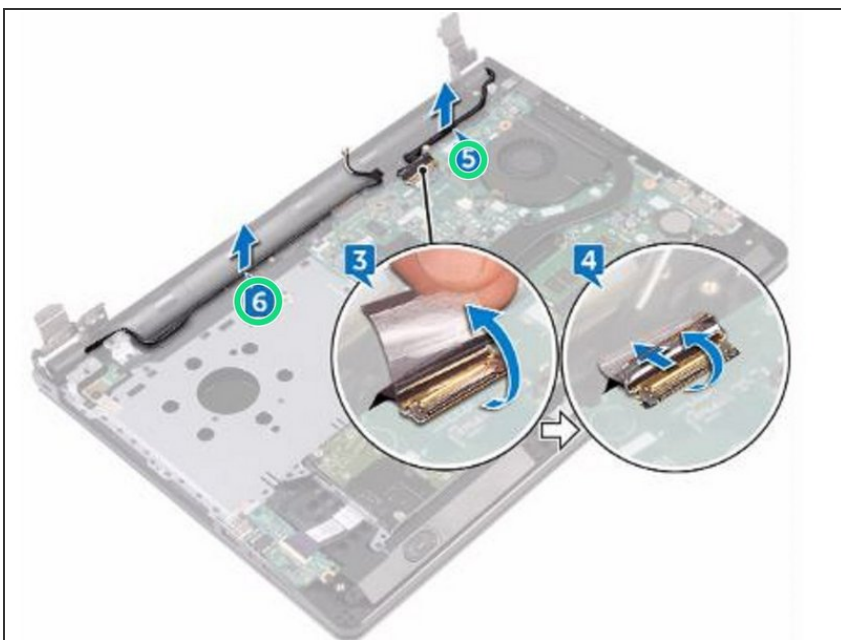
- Close the display hinges and align the screw holes on the display hinges with the screw holes on the palm-rest assembly.

## Step 11 — Replace the Screws



- Replace the three screws (2.5x8) that secure the display hinges to the palm-rest assembly.

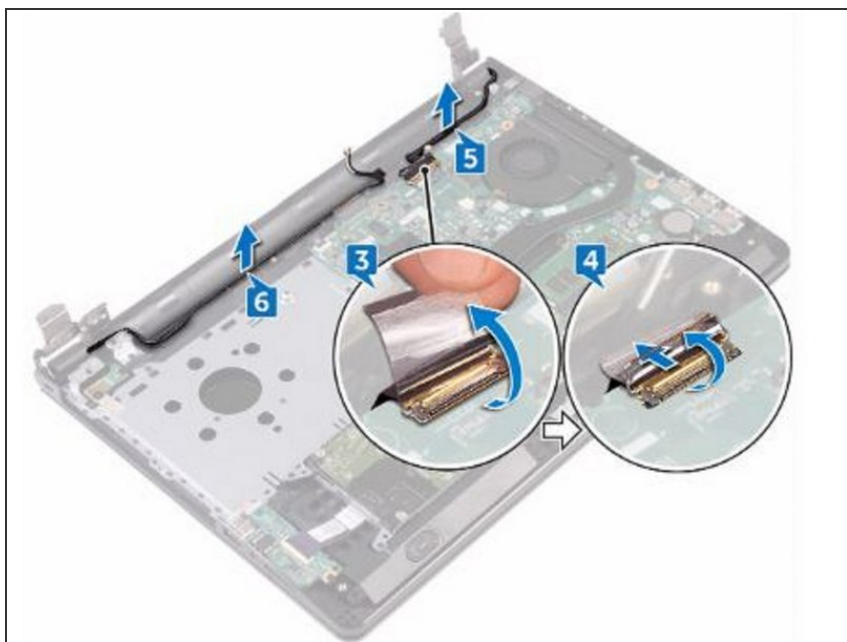
## Step 12 — Route the Antenna Cables



- Route the antenna cables through the routing guides on the palm-rest assembly.

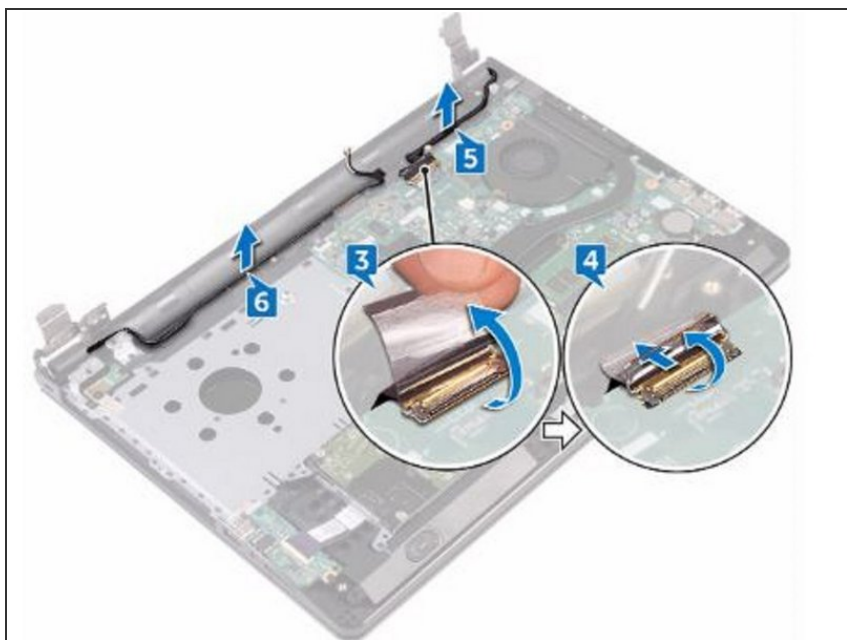


## Step 13 — Connecting the Display Cable



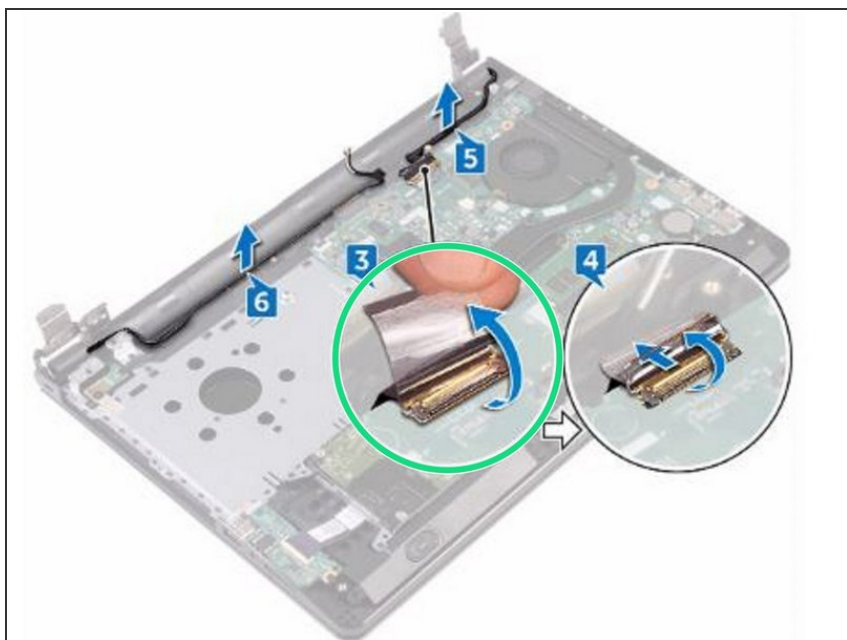
- Connect the display cable and close the latch to secure the cable.

## Step 14 — Route the Display Cable



- Route the display cable through the routing guides on the palm-rest assembly.

## Step 15 — Adhere the Tape



- Adhere the tape that secures the display cable to the palm-rest assembly.

## Step 16 — Close the Display



- Close the display and turn the computer over.