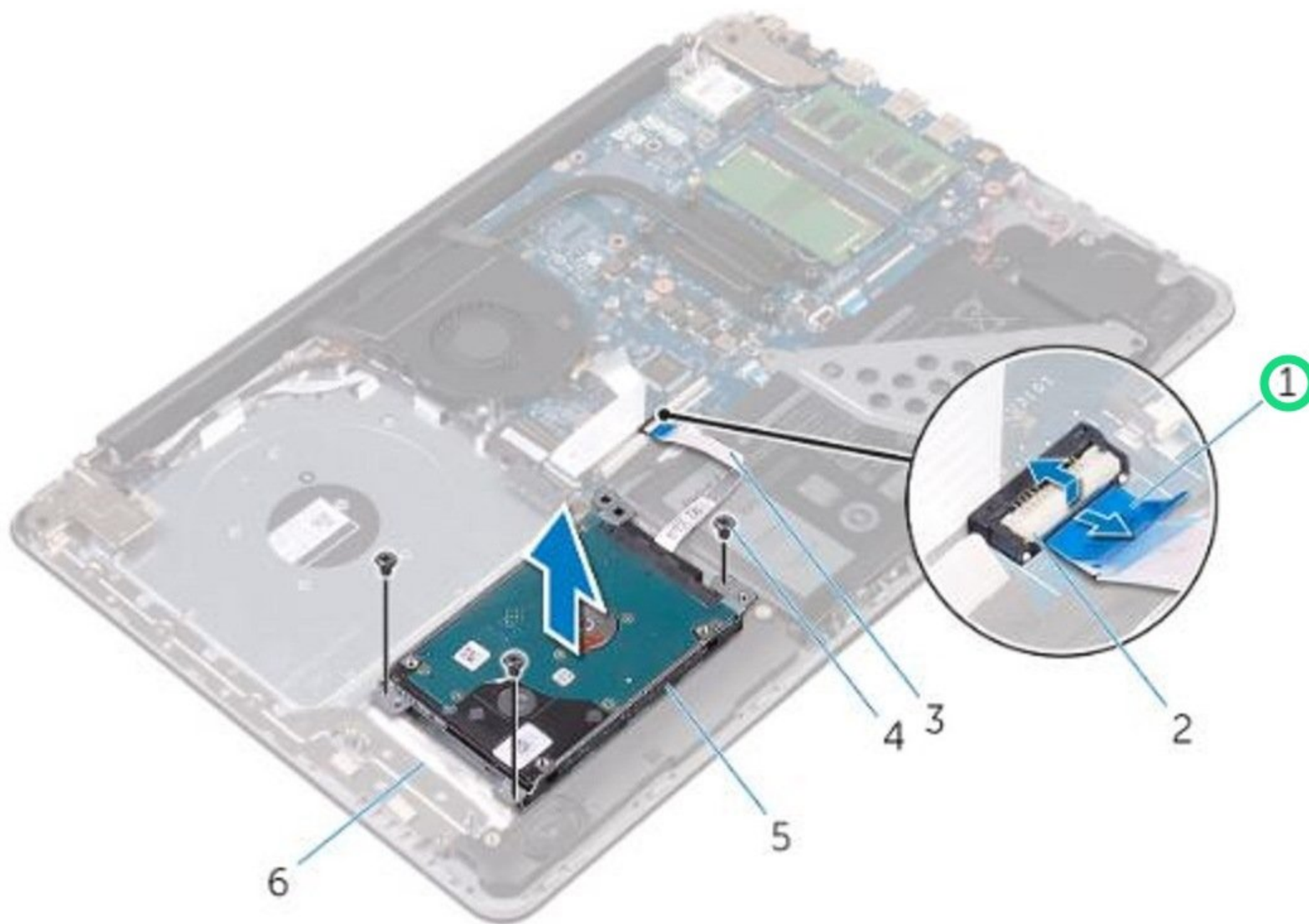




# Dell Inspiron 15 5565 Hard Drive Replacement

Written By: Terrence15



---

## INTRODUCTION

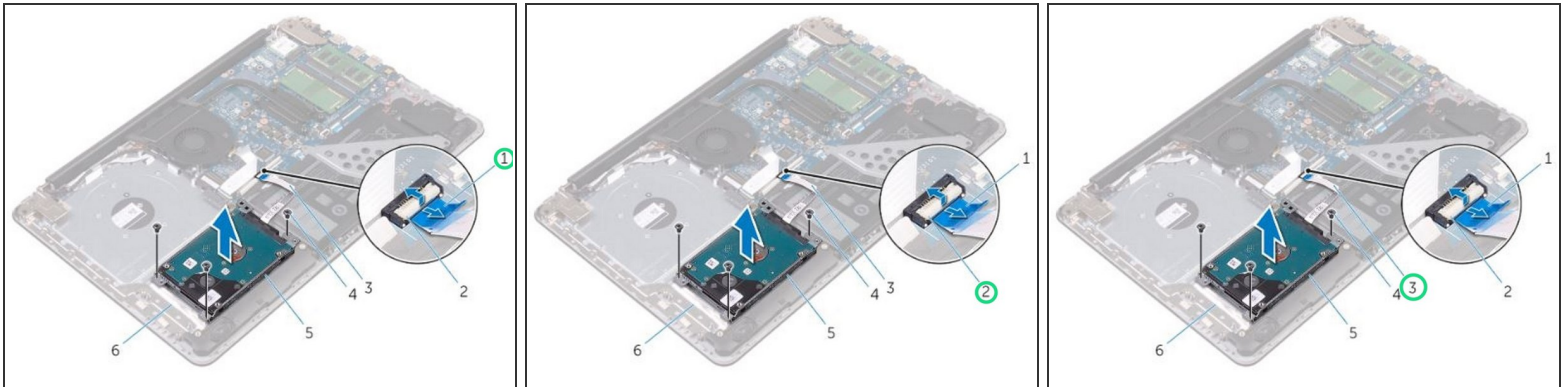
In this guide, we will show you how to remove and replace the Hard Drive.



### TOOLS:

- [Phillips #0 Screwdriver](#) (1)
-

## Step 1 — Lifting the Latch

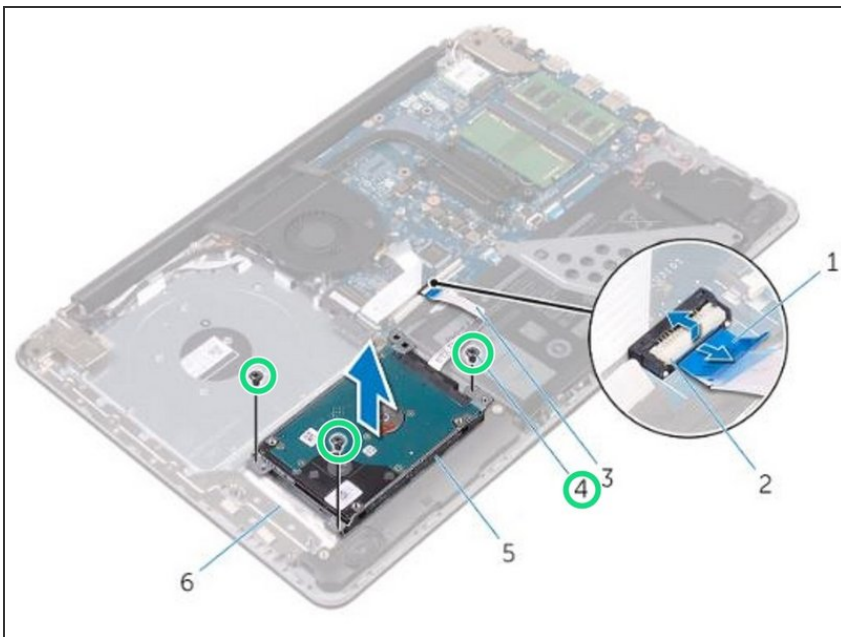


**⚠ WARNING:** Before working inside your computer, read the safety information that shipped with your computer and follow the steps in [Before Working Inside Your Computer](#). After working inside your computer, follow the instructions in [After Working Inside Your Computer](#).

**⚠ CAUTION:** Hard drives are fragile. Exercise care when handling the hard drive.

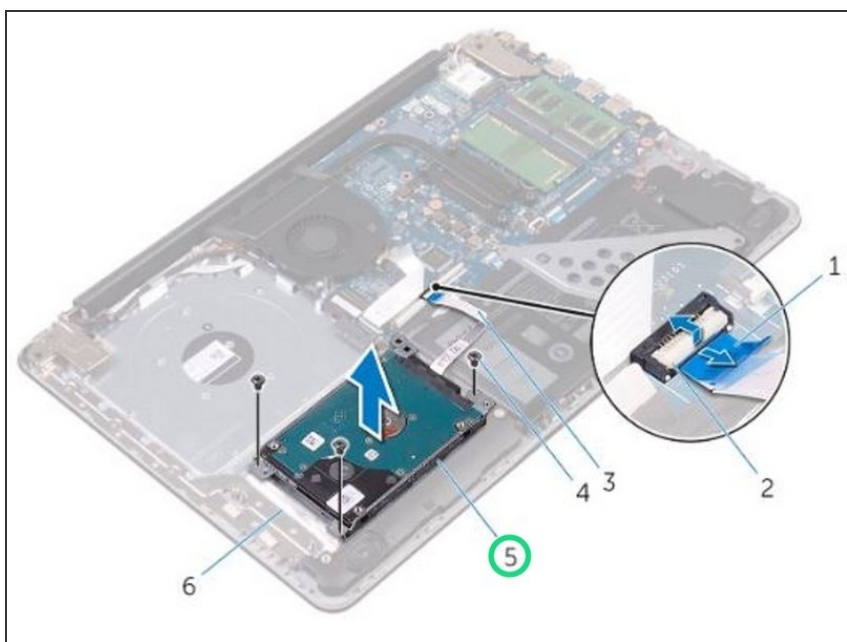
- Lift the latch and using the pull tab, disconnect the hard-drive cable from the system board.

## Step 2 — Remove the Screws



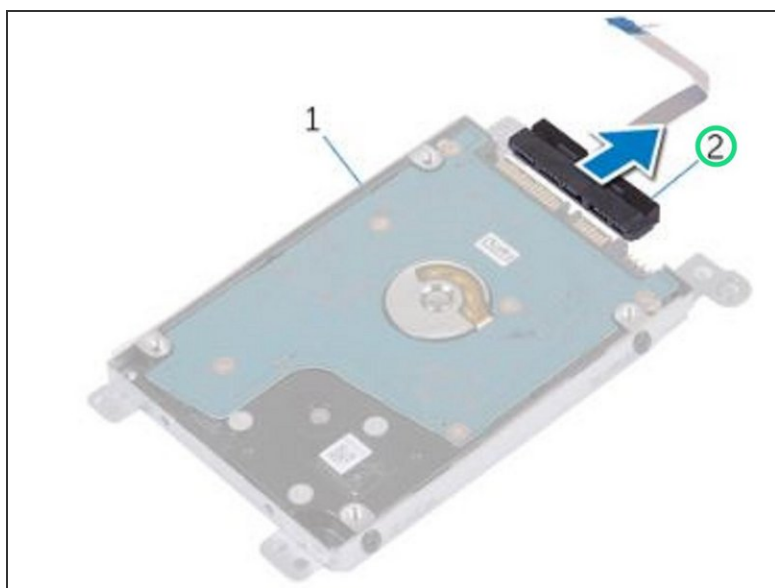
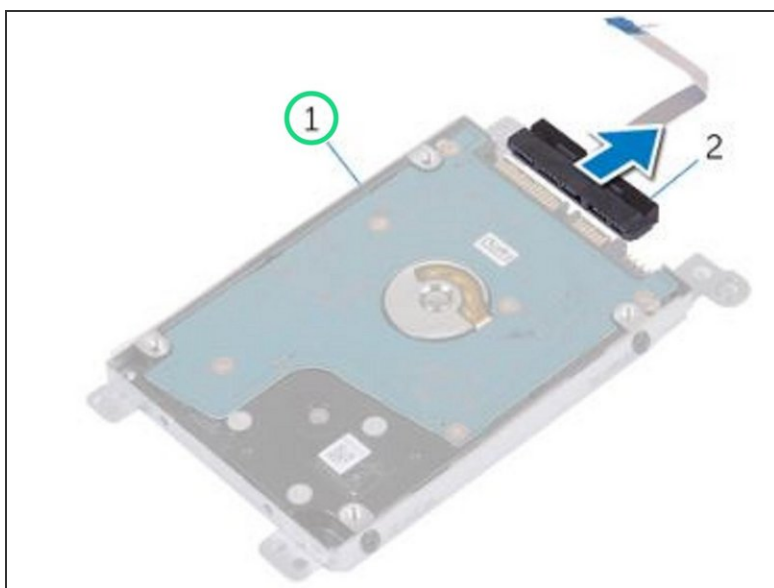
- Remove the screws that secure the hard-drive assembly to the palm rest and keyboard assembly.

### Step 3 — Lifting the Hard Drive Assembly



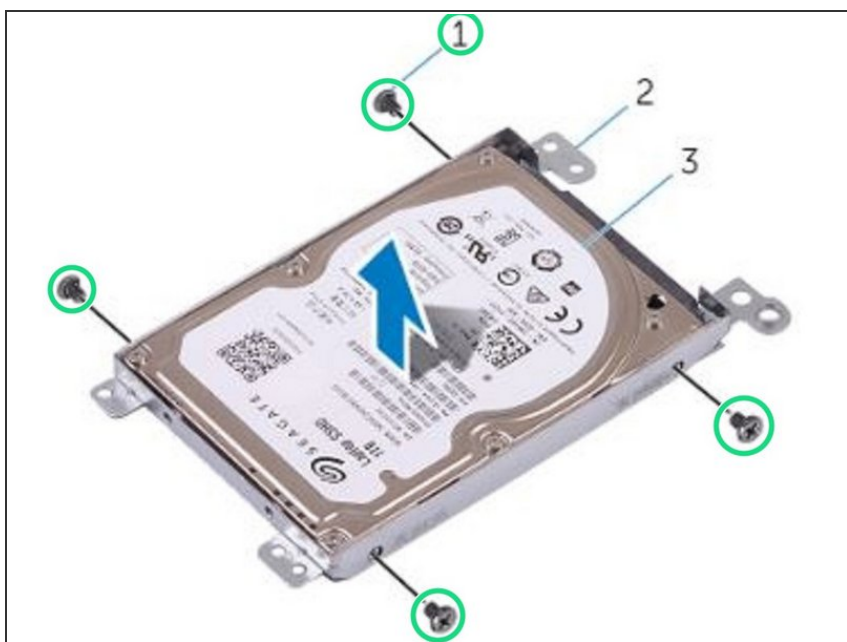
- Lift the hard-drive assembly along with its cable off the palm rest and keyboard assembly.

### Step 4 — Disconnecting the Interposer



- Disconnect the interposer from the hard-drive assembly.

## Step 5 — Remove the Screws



- Remove the screws that secure the hard-drive bracket to the hard drive.

## Step 6 — Lifting the Hard Drive



- Lift the hard drive off the hard-drive bracket.



## Step 7 — Align the Screw Holes



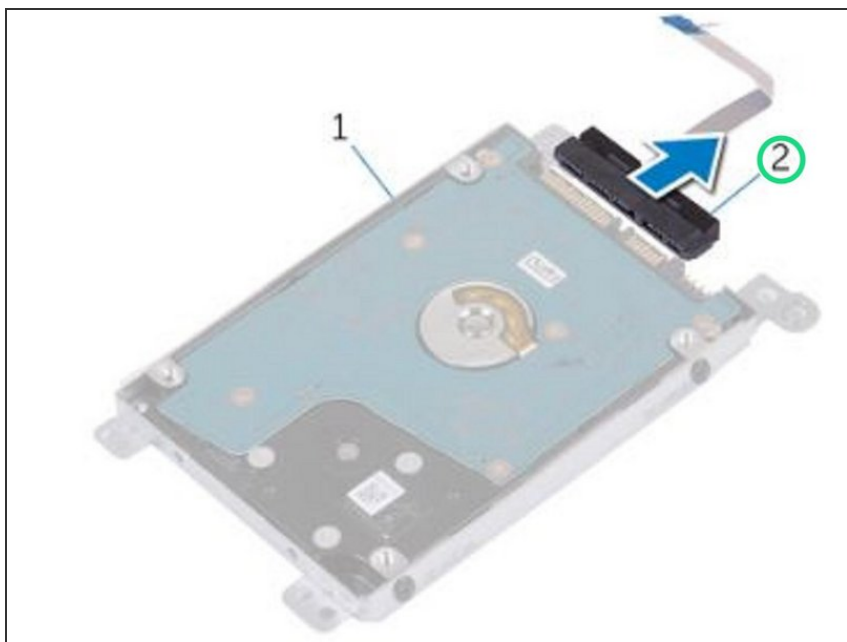
- Align the screw holes on the hard-drive bracket with the screw holes on the **NEW** hard drive.

## Step 8 — Replace the Screws



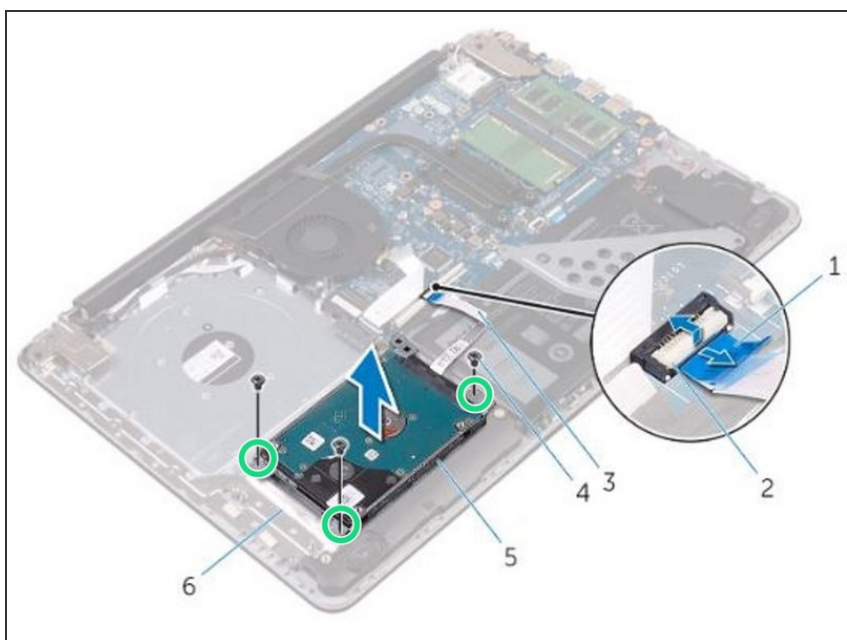
- Replace the screws that secure the hard-drive bracket to the hard drive.

## Step 9 — Connecting the Interposer



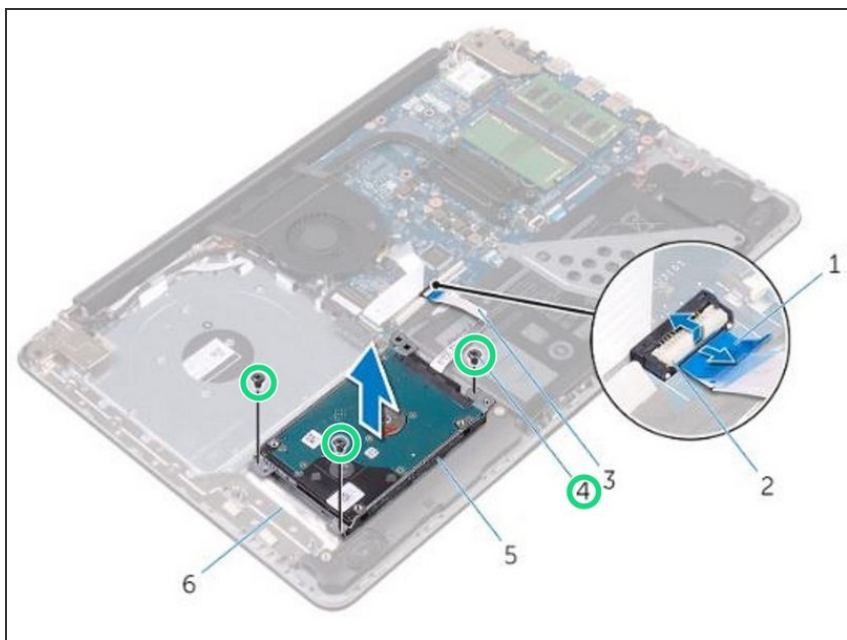
- Connect the interposer to the hard-drive assembly.

## Step 10 — Align the Screw Holes



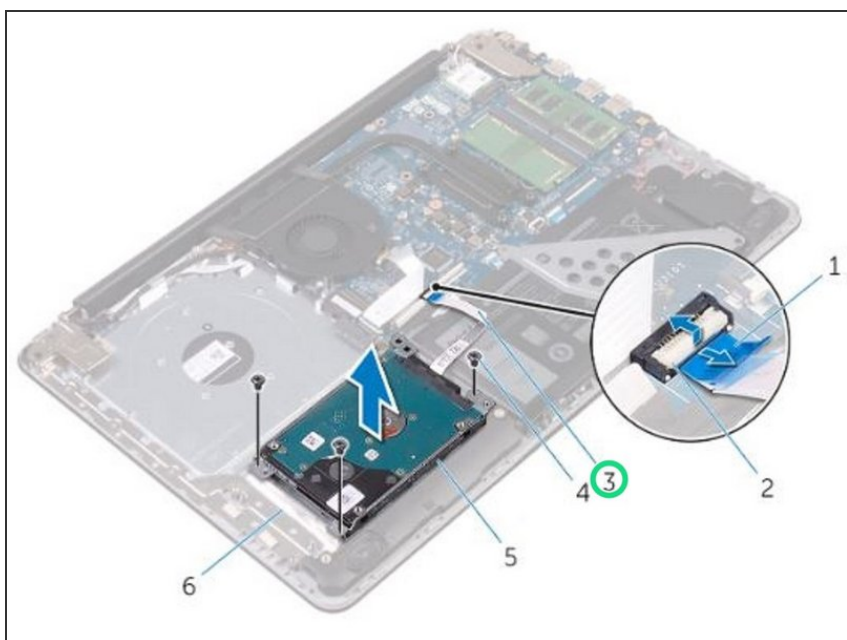
- Align the screw holes on the hard-drive assembly with the screw holes on the palm rest and keyboard assembly.

## Step 11 — Replace the Screws



- Replace the screws that secure the hard-drive assembly to the palm rest and keyboard assembly.

## Step 12 — Connect the Hard Drive Cable



- Connect the hard-drive cable to the system board and close the latch to secure the cable.