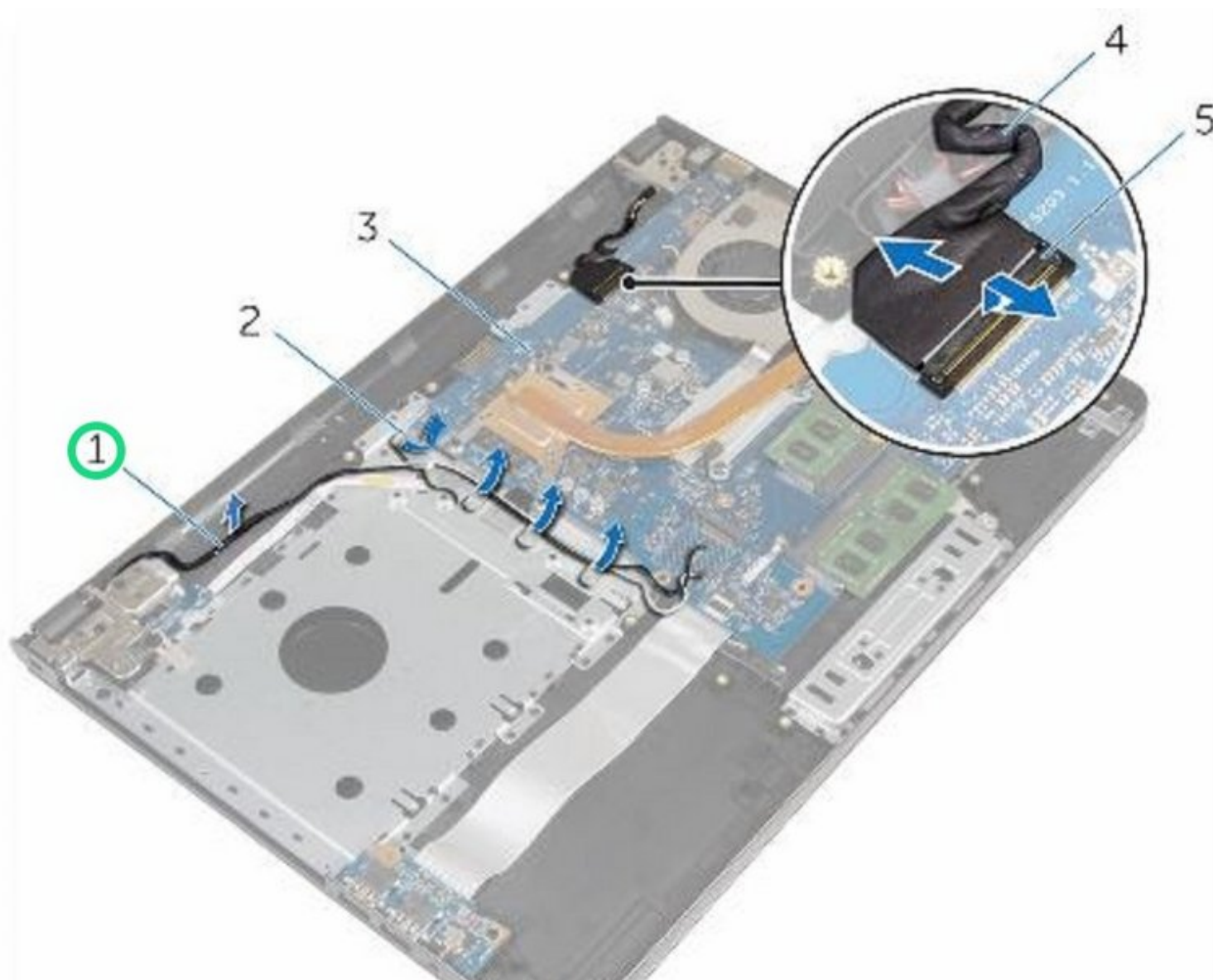




Dell Inspiron 15 5566 Display Assembly Replacement

Written By: Terrence15



INTRODUCTION

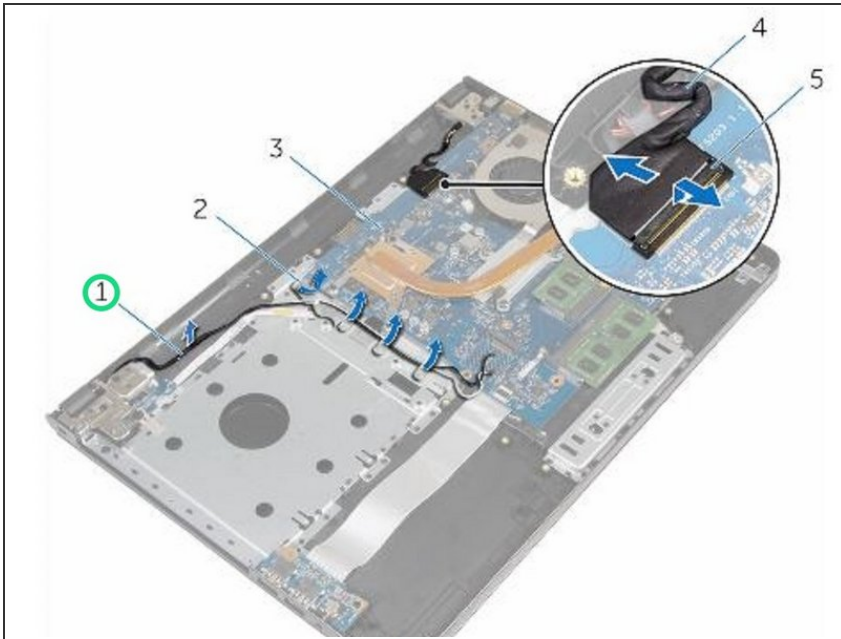
In this guide, we will be showing you how to remove and replace the Display Assembly.



TOOLS:

- [Phillips #0 Screwdriver](#) (1)
-

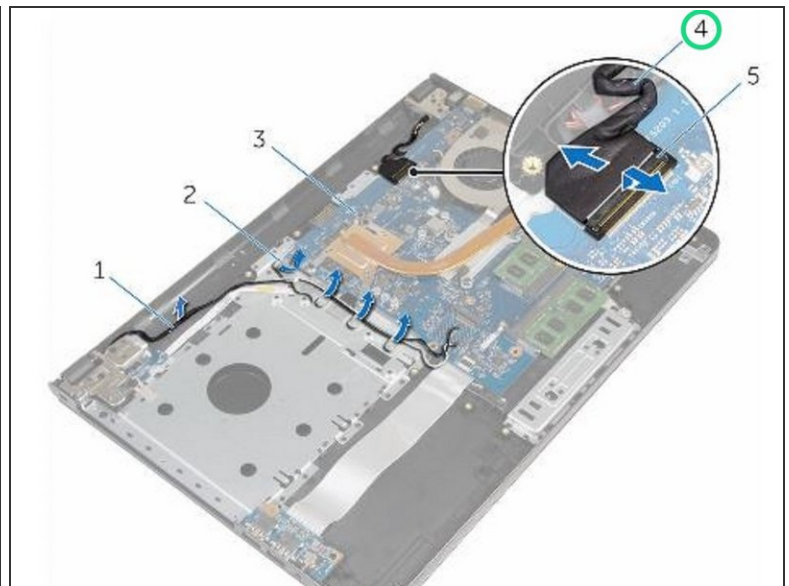
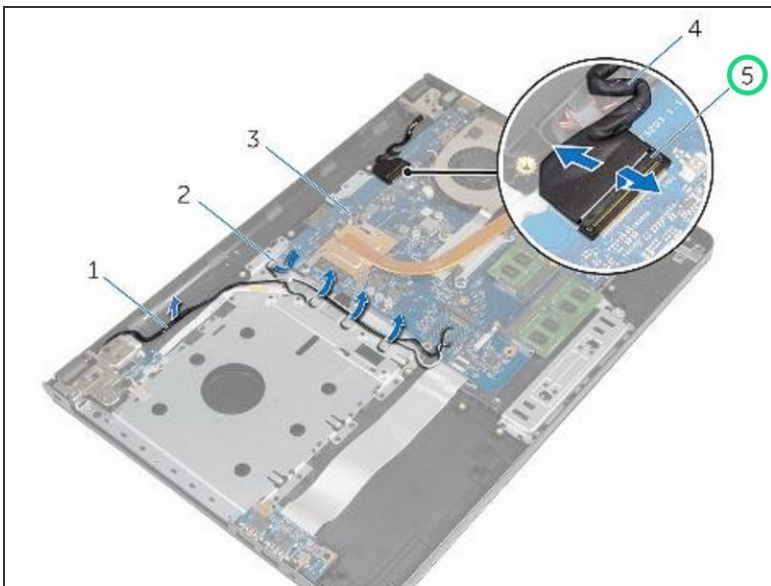
Step 1 — Note the Antenna Cable



⚠ WARNING: Before working inside your computer, read the safety information that shipped with your computer and follow the steps in [Before Working Inside Your Computer](#). After working inside your computer, follow the instructions in [After Working Inside Your Computer](#).

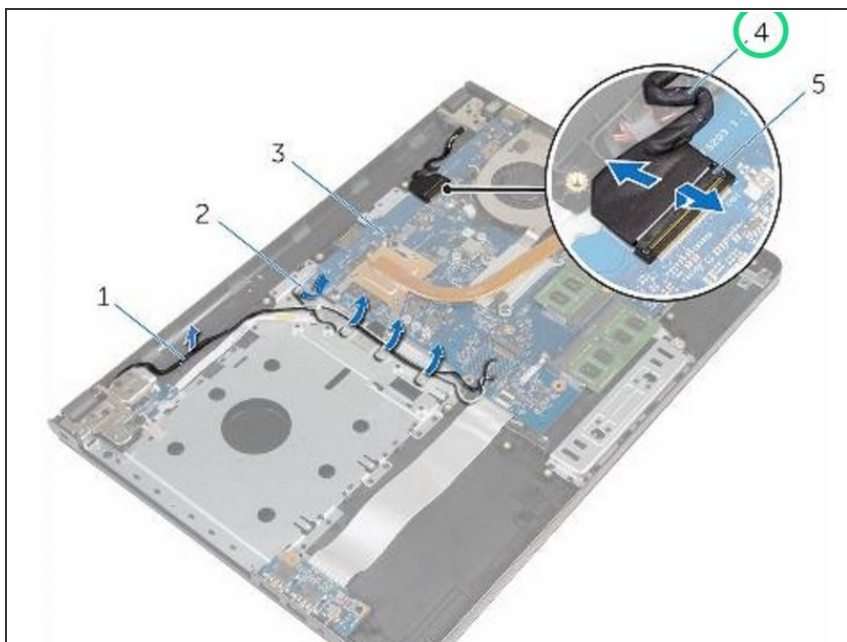
- Note the antenna cable routing and remove the cable from its routing guides.

Step 2 — Lifting the Latch



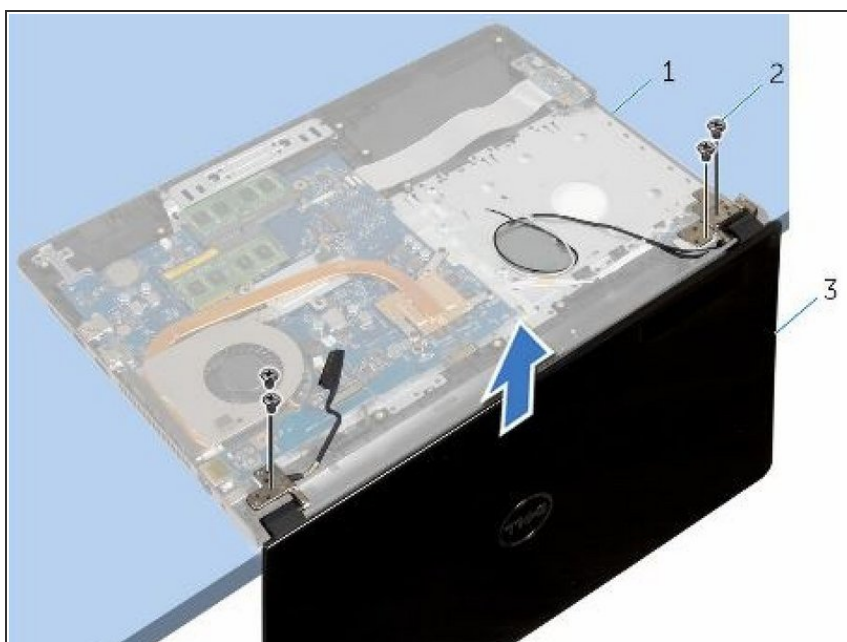
- Lift the latch and disconnect the display cable from the system board.

Step 3 — Note the Display Cable



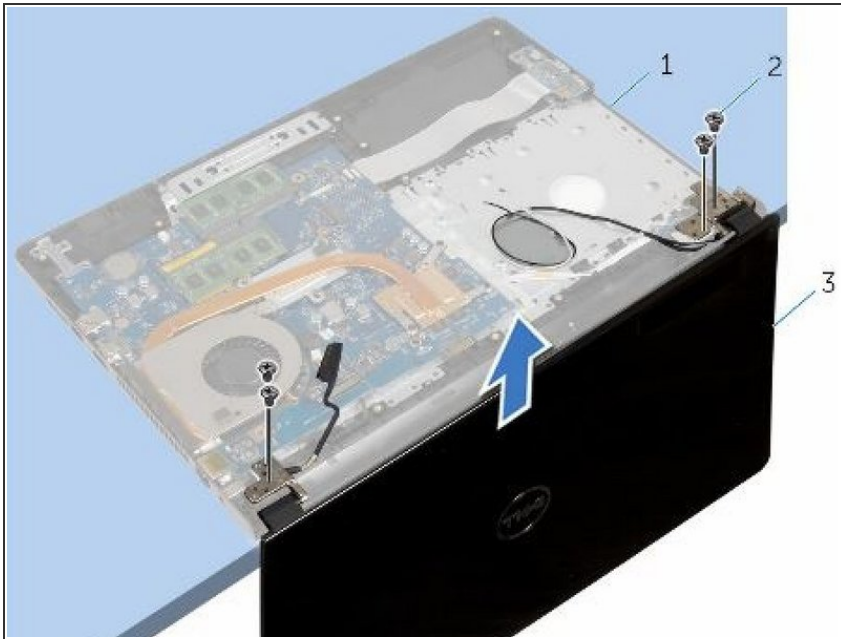
- Note the display cable routing and remove the cable from its routing guides.

Step 4 — Open the Display



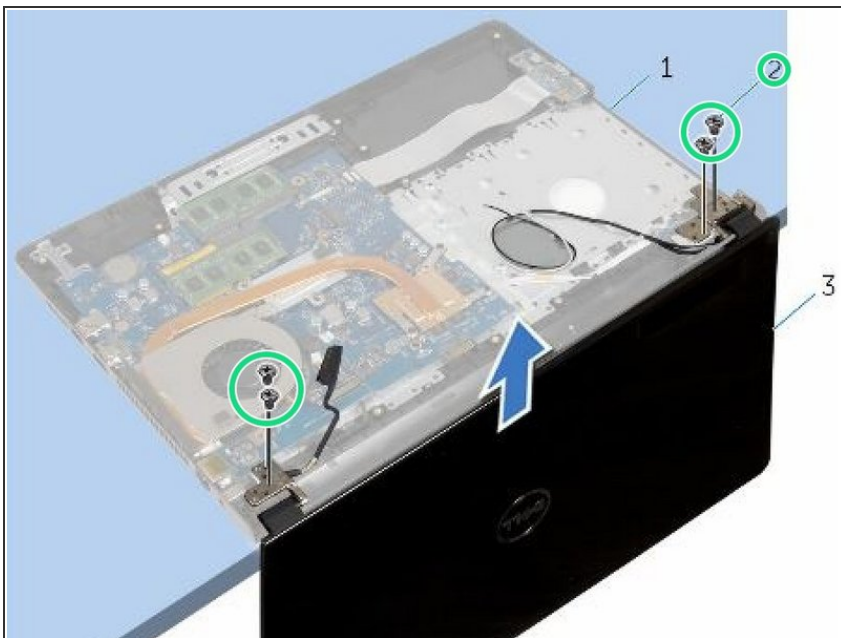
- Turn the computer over.
- Open the display at an angle of 90 degrees.

Step 5 — Placing the Display



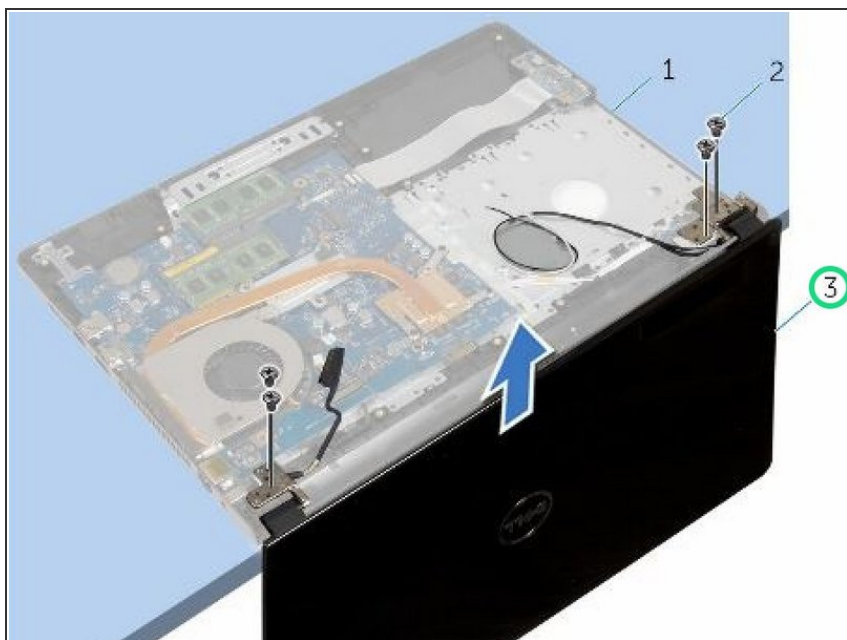
- Place the computer on the edge of the table so that the palm-rest assembly is on the table and the display assembly extends past the table edge with the display hinges facing up.

Step 6 — Remove the Screws



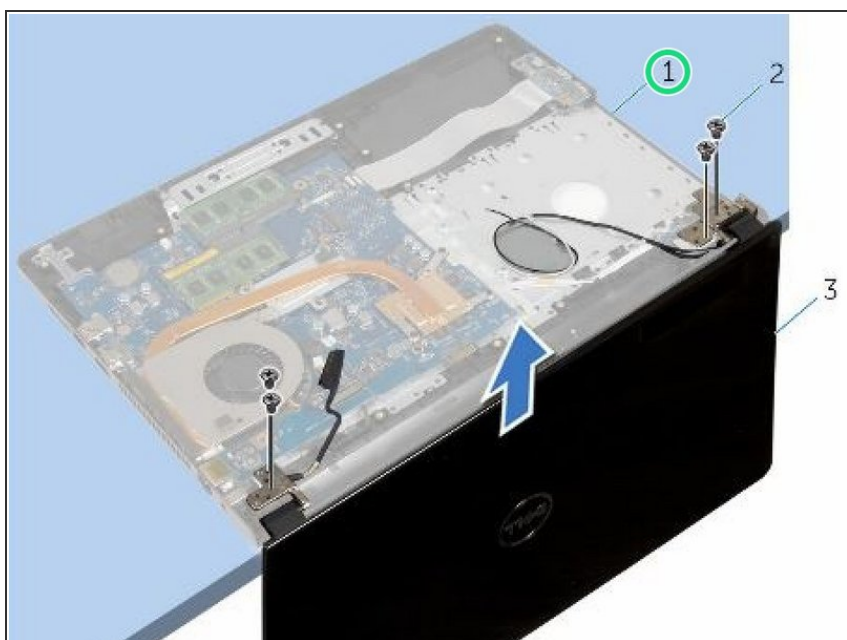
- Remove the four screws (M2.5x8) that secure the display hinges to the palm-rest assembly.

Step 7 — Lifting the Display Assembly



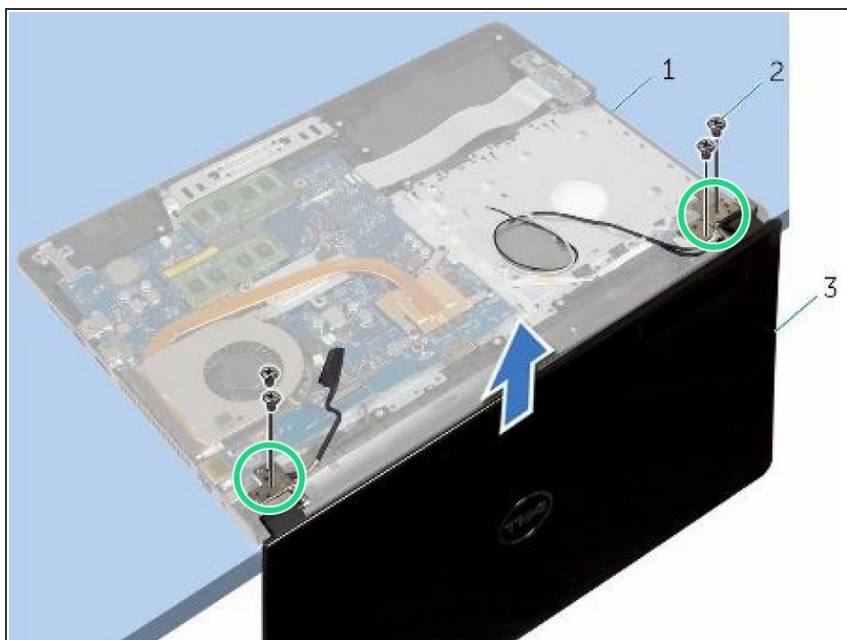
- Lift the display assembly off the palm-rest assembly.

Step 8 — Placing the Palm Rest



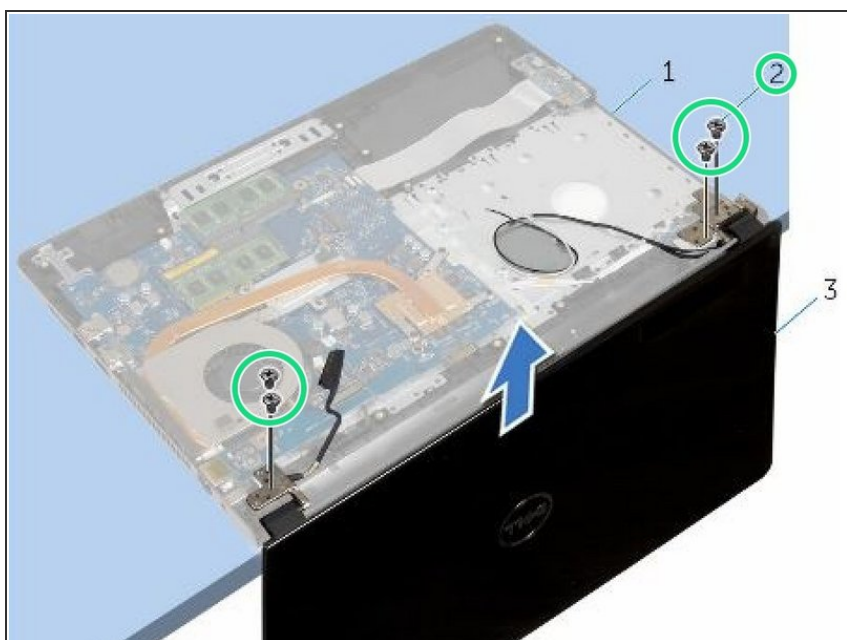
- Place the palm-rest assembly at the edge of the table with the coin-cell battery facing away from the edge.

Step 9 — Align the Screw Holes



- Align the screw holes on the display hinges with the screw holes on the palm-rest assembly.

Step 10 — Replace the Screws



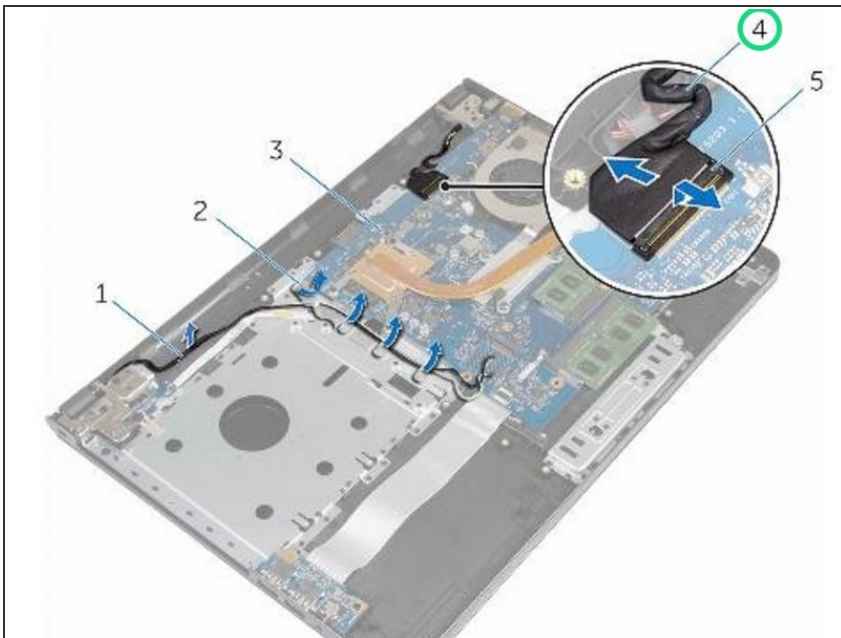
- Replace the screws that secure the display hinges to the palm-rest assembly.

Step 11 — Close the Display



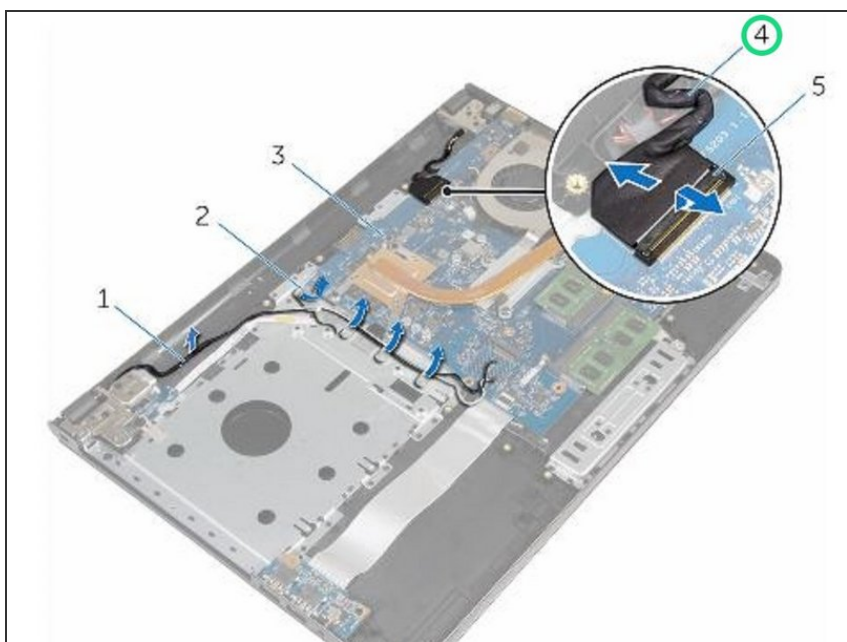
- Close the display and turn the computer over.

Step 12 — Routing the Display Cable



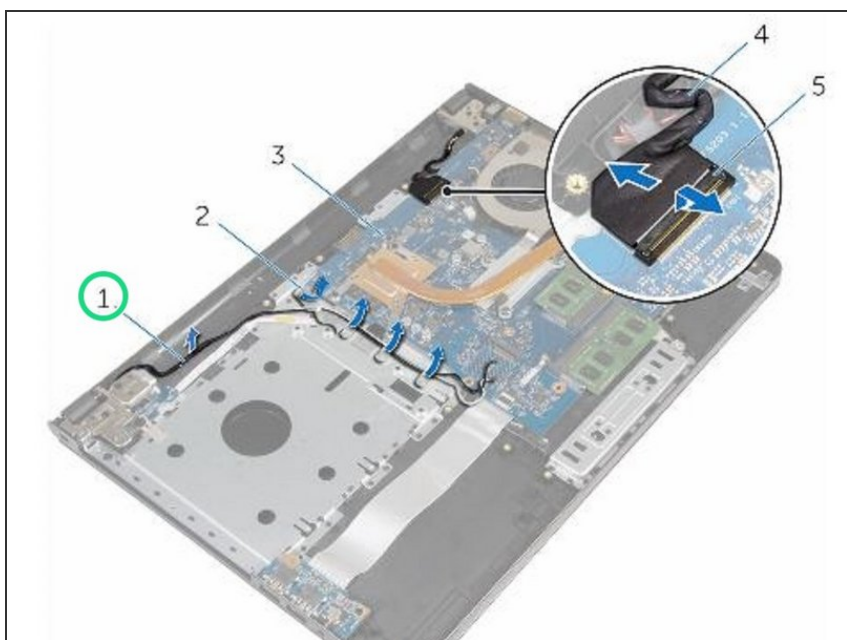
- Route the display cable through the routing guides on the palm-rest assembly.

Step 13 — Sliding the Display Cable



- Slide the display cable to the connector and press down on the latch to connect the display cable to the system board.

Step 14 — Routing the Antenna Cable



- Route the antenna cable through the routing guides on the palm-rest assembly.