



Dell Inspiron 15 5577 Gaming Display Assembly Replacement

Written By: Terrence15



INTRODUCTION

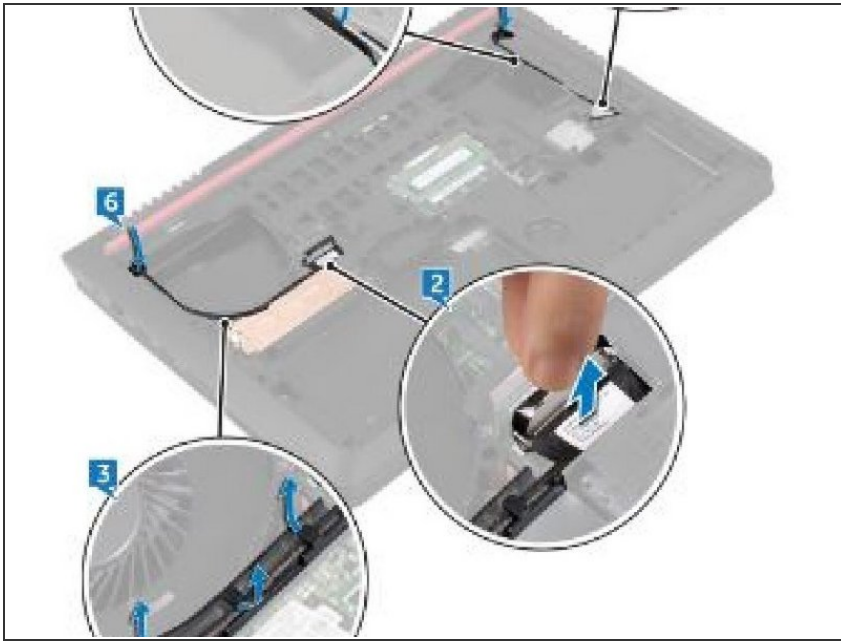
In this guide, we will be showing you how to remove and replace the Display Assembly.



TOOLS:

- [Phillips #0 Screwdriver](#) (1)
-

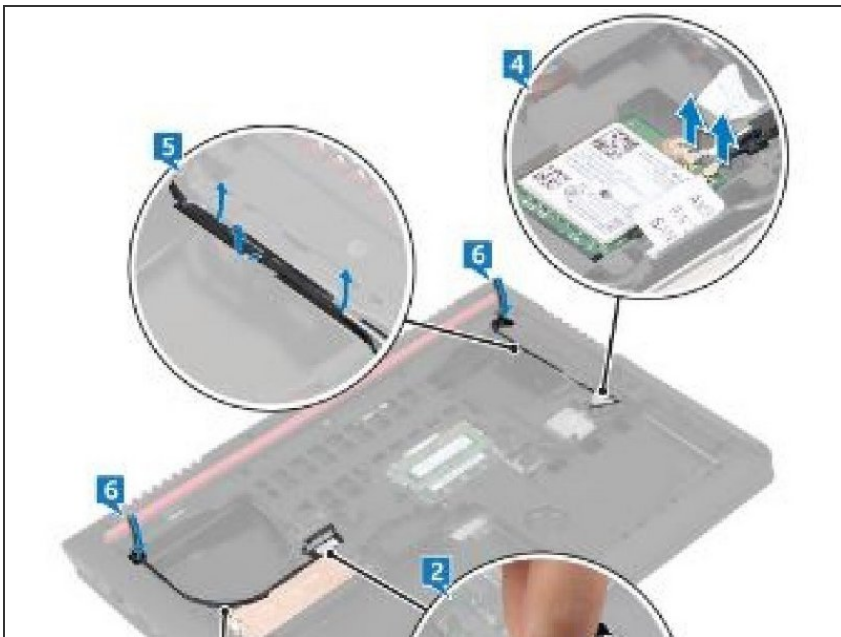
Step 1 — Disconnect the Display Cable



⚠ WARNING: Before working inside your computer, read the safety information that shipped with your computer and follow the steps in [Before Working Inside Your Computer](#). After working inside your computer, follow the instructions in [After Working Inside Your Computer](#).

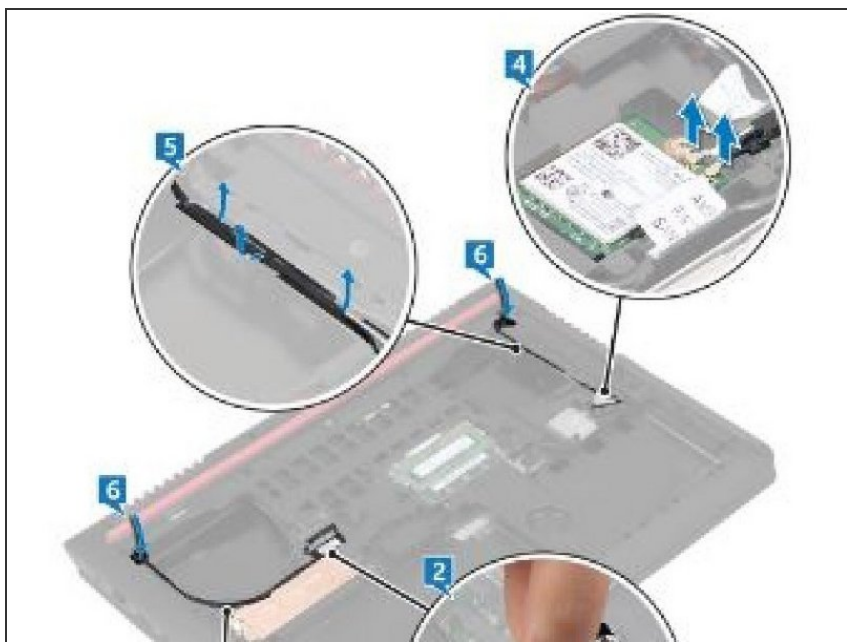
- Close the display and turn the computer over.
- Using the pull tab, disconnect the display cable from the system board.

Step 2 — Noting the Display Cable



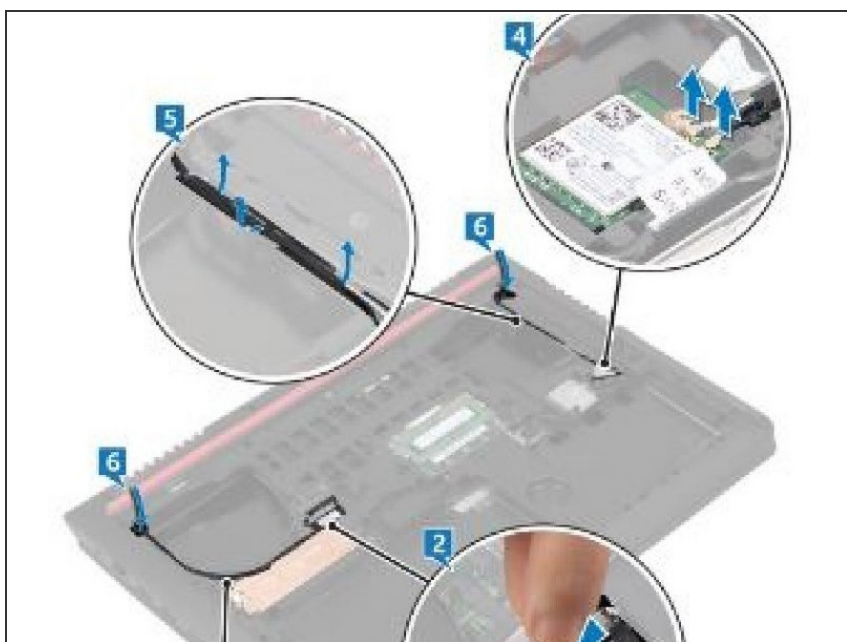
- Note the display-cable routing and remove the cable from the routing guides on the computer base.

Step 3 — Disconnecting the Antenna Cables



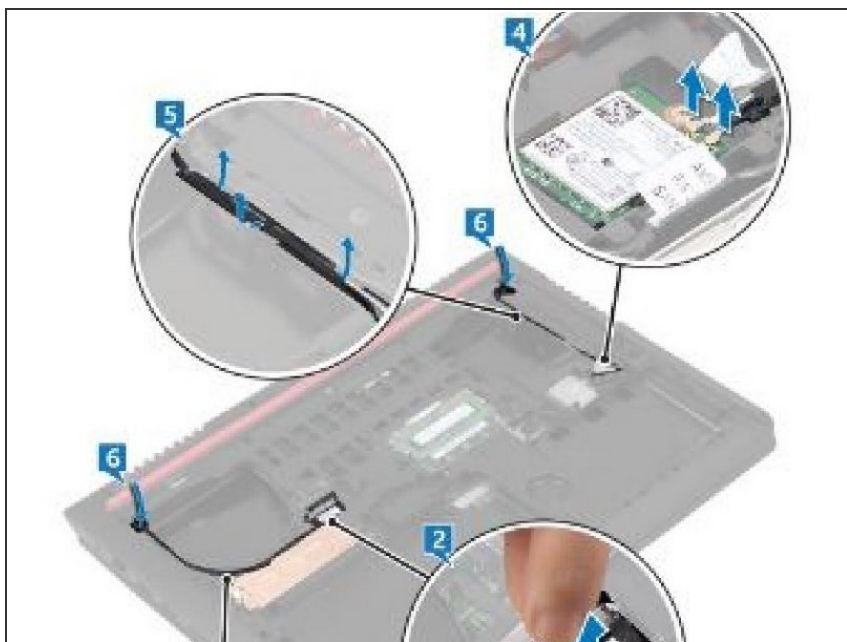
- Disconnect the antenna cables from the wireless card.

Step 4 — Note the Cable Routing



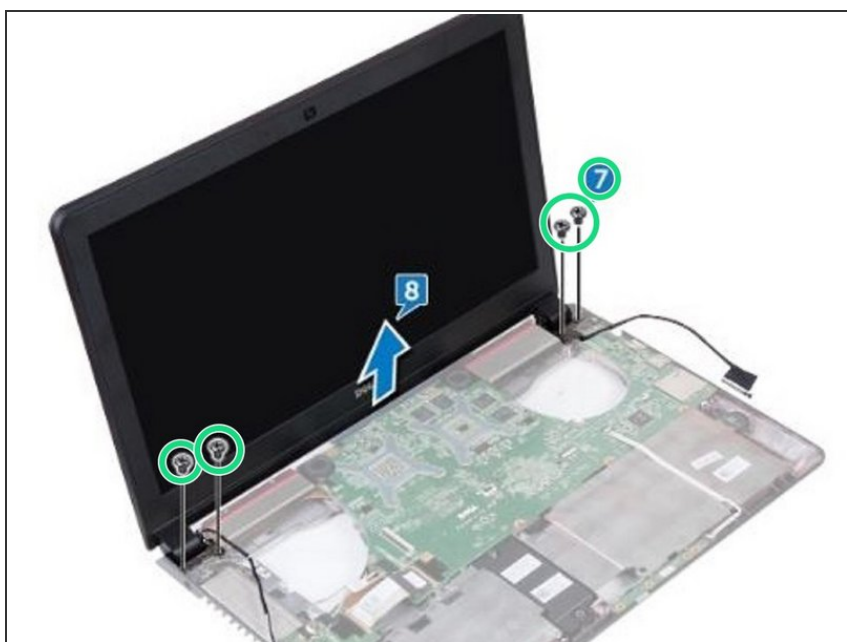
- Note the antenna-cable routing and remove the antenna cables from the routing guides on the computer base.

Step 5 — Slide the Display Cable



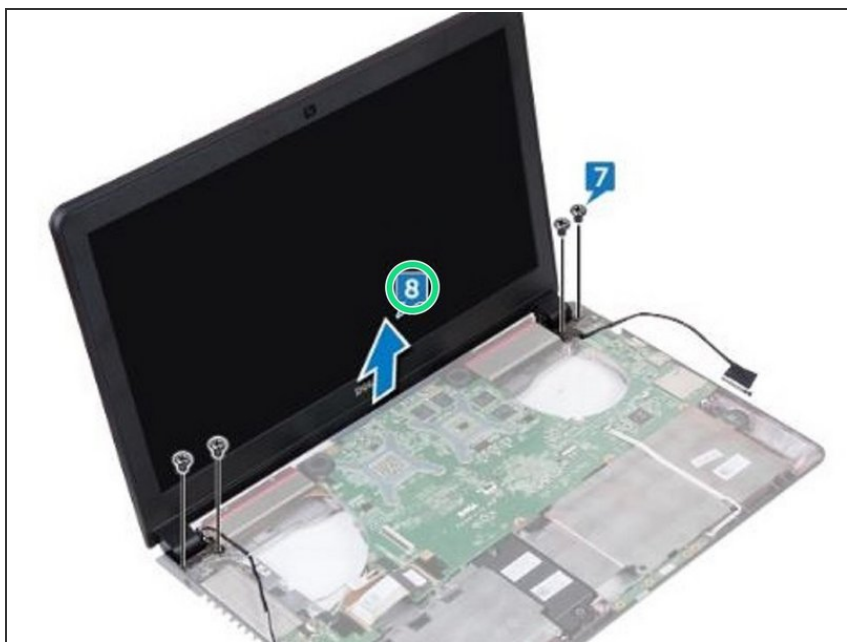
- Slide the display cable and antenna cables through the slots on the computer base.

Step 6 — Remove the Screws



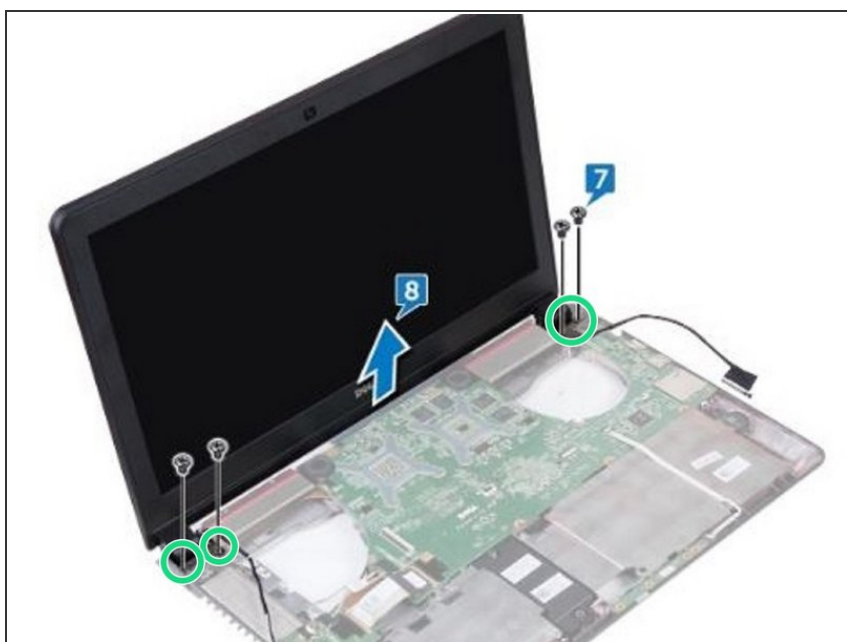
- Remove the four screws (M2x5) that secure the display assembly to the computer base.

Step 7 — Lifting the Display Assembly



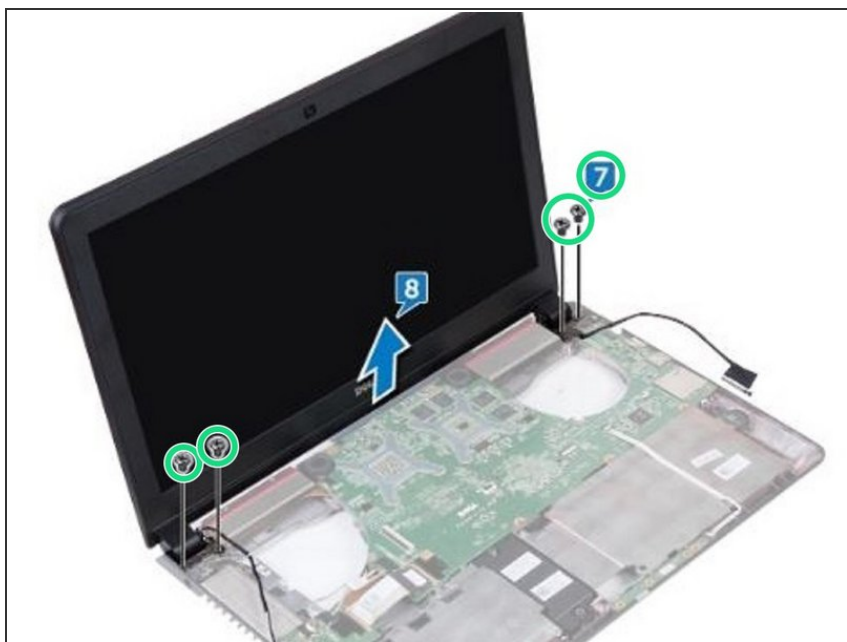
- Lift the display assembly off the computer base.

Step 8 — Align the Screw Holes



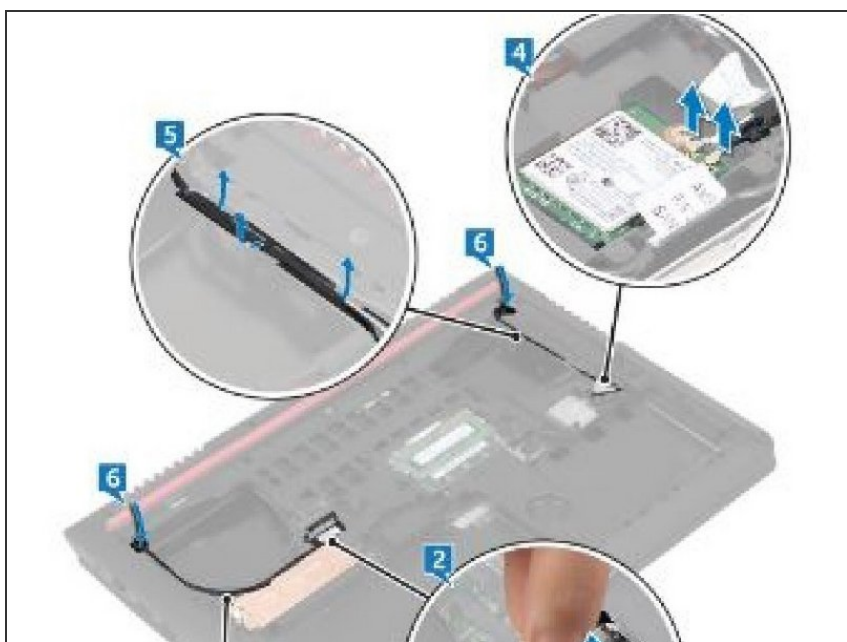
- Align the screw holes on the **NEW** display assembly with the screw holes on the computer base.

Step 9 — Replace the Screws



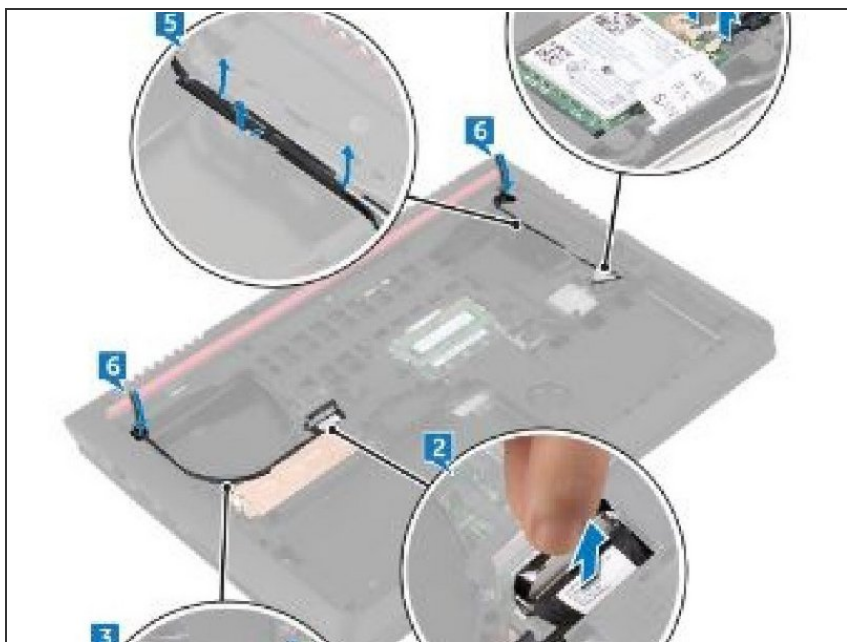
- Replace the four screws (M2x5) that secure the display assembly to the computer base.

Step 10 — Sliding the Display Cable



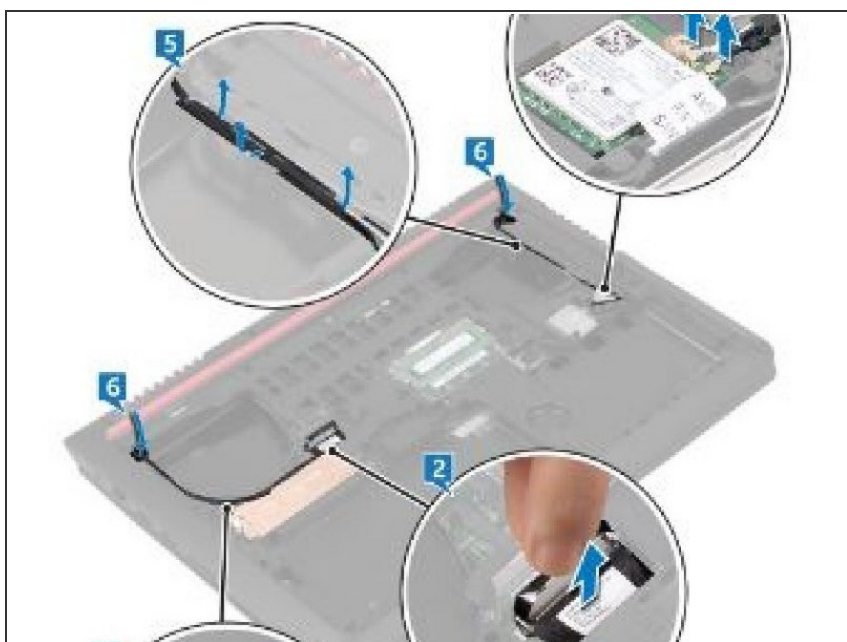
- Slide the display cable and antenna cables through the slot on the computer base.

Step 11 — Routing the Display Cable



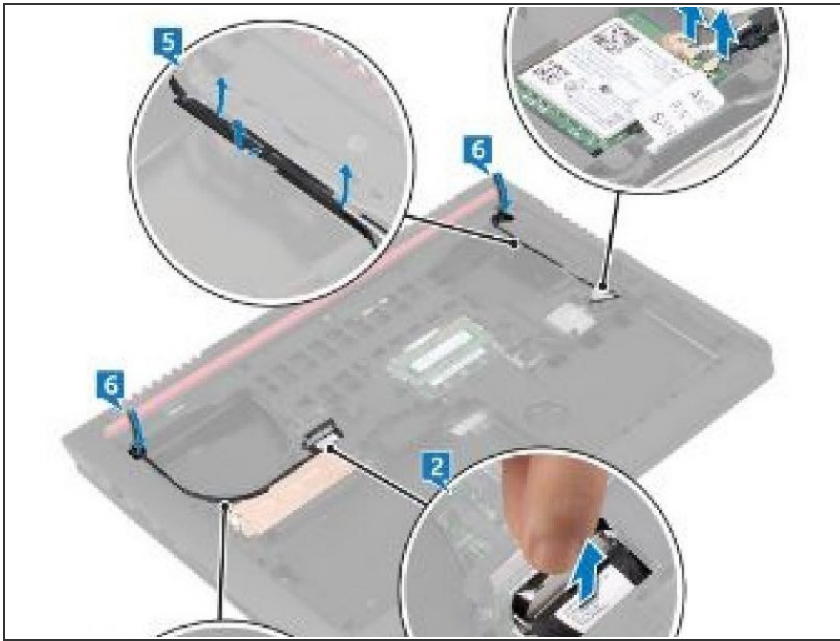
- Close the display and turn the computer over.
- Route the display cable and antenna cables through the routing guides on the computer base.

Step 12 — Connecting the Antenna Cables



- Connect the antenna cables to the wireless card.

Step 13 — Connecting the Display Cable



- Connect the display cable to the system board.
- Close the display and turn the computer over.