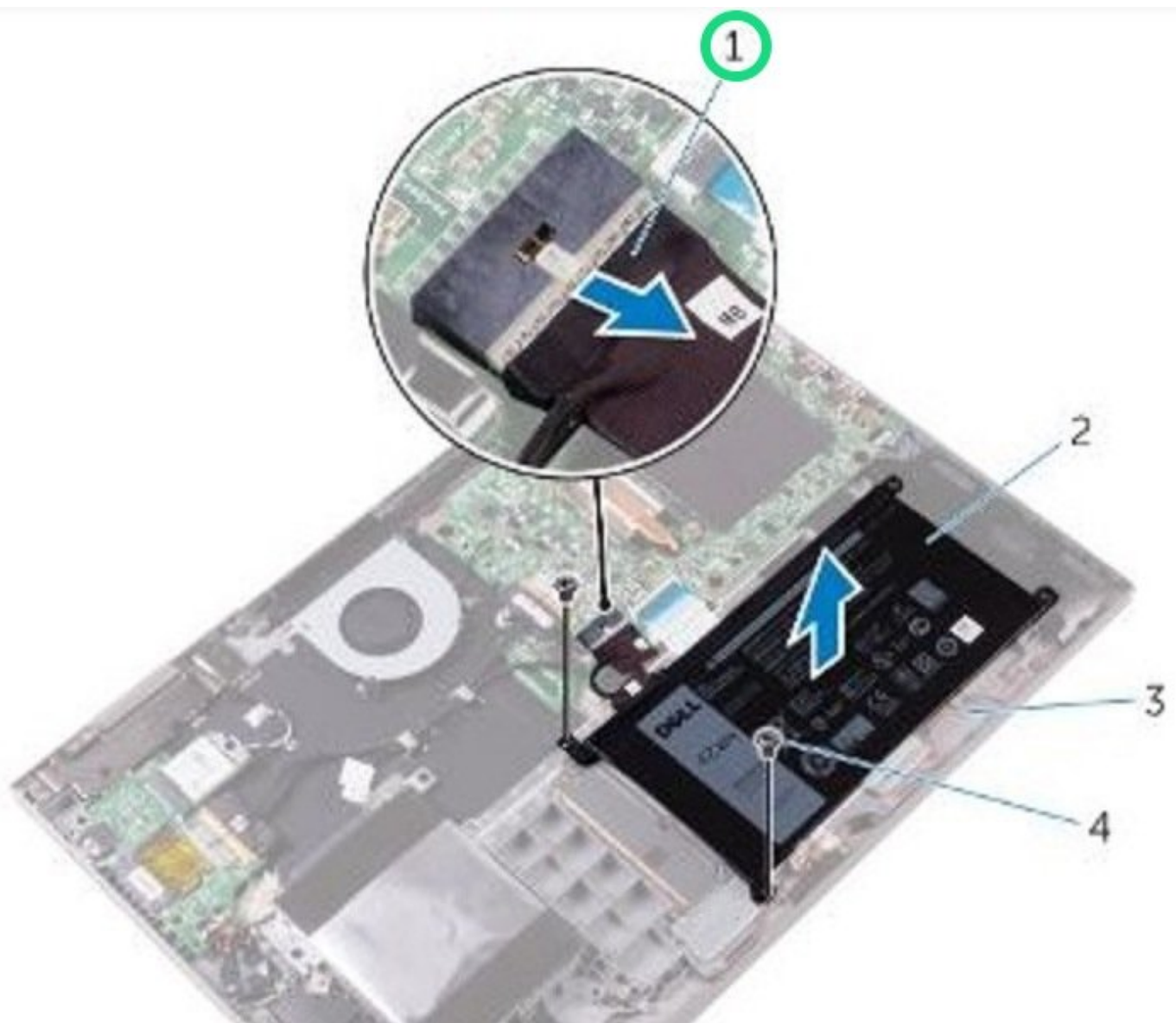




Dell Inspiron 15 5579 2-in-1 Battery Replacement

Written By: Terrence15



INTRODUCTION

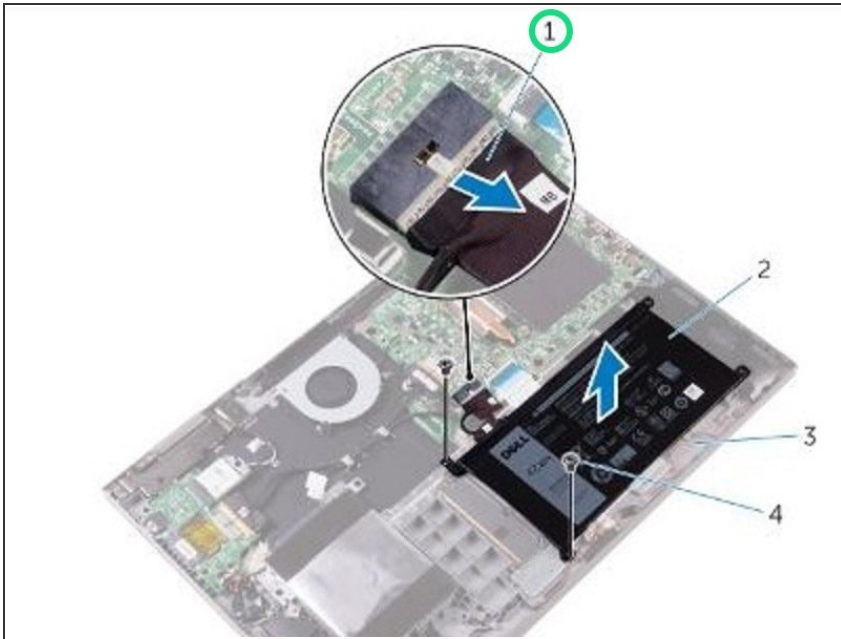
In this guide, we will be showing you how to remove and replace the Battery.



TOOLS:

- [Phillips #0 Screwdriver](#) (1)
-

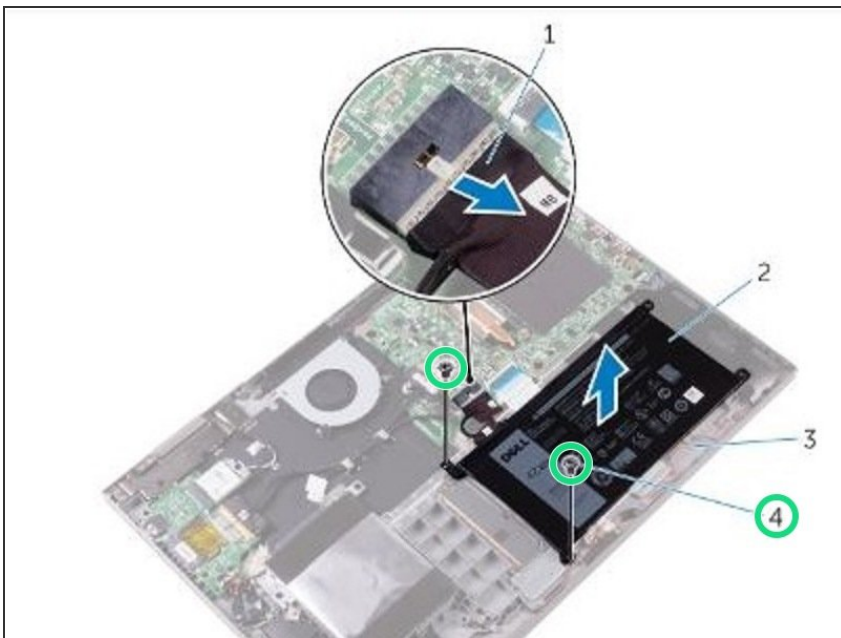
Step 1 — Disconnect the Battery Cable



⚠ WARNING: Before working inside your computer, read the safety information that shipped with your computer and follow the steps in [Before Working Inside Your Computer](#). After working inside your computer, follow the instructions in [After Working Inside Your Computer](#).

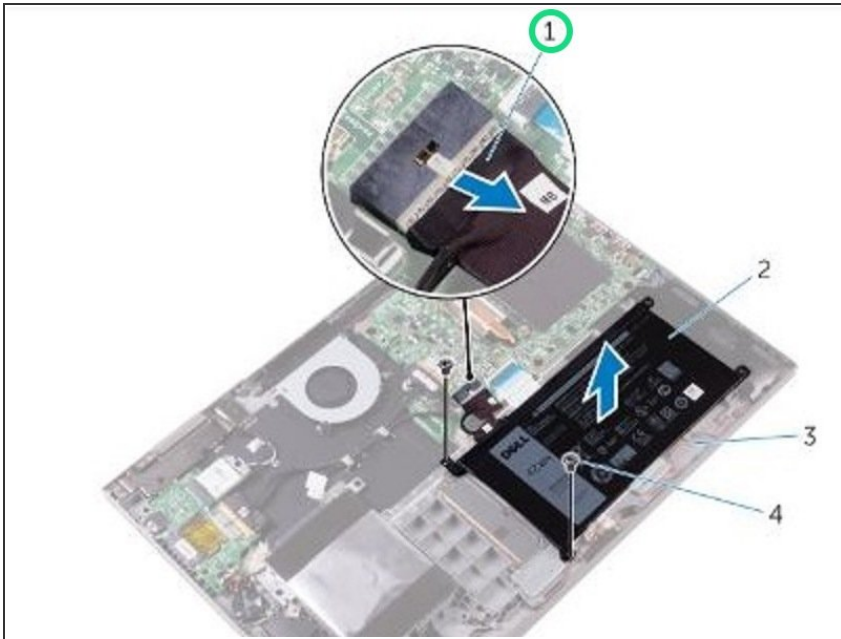
- Disconnect the battery cable from the system board.

Step 2 — Remove the Screws



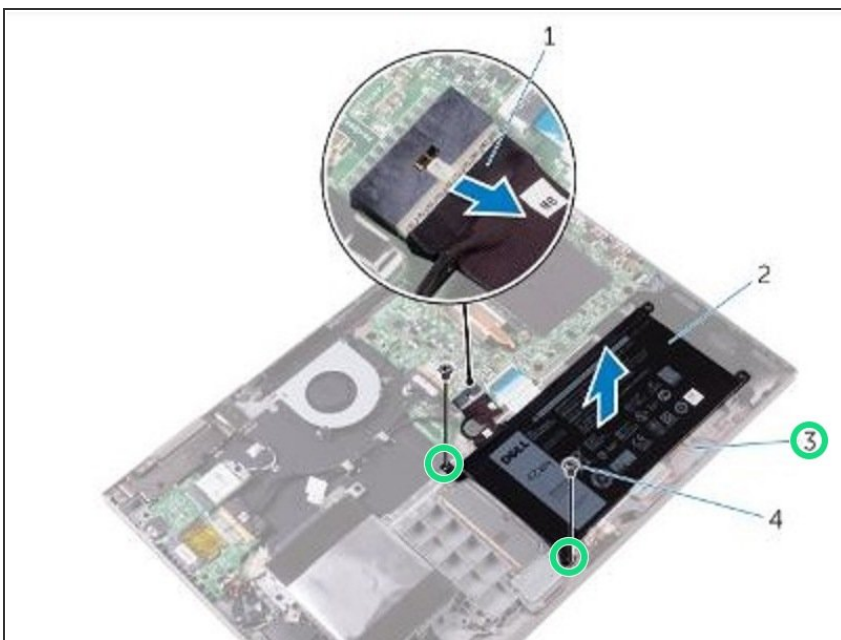
- Press and hold the power button for 5 seconds to ground the system board.
- Remove the two screws (M2x3) that secure the battery to the palm rest and keyboard assembly.

Step 3 — Lifting the Battery



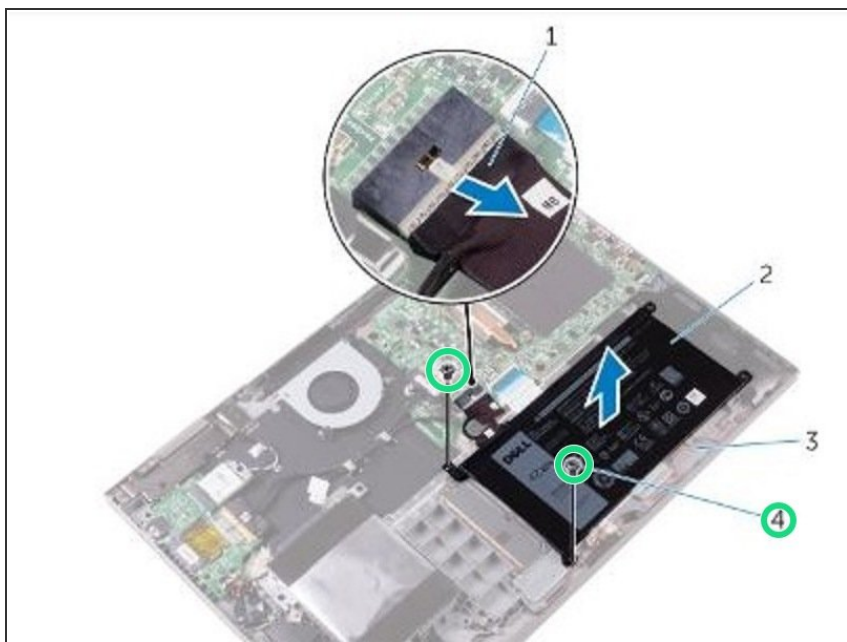
- Lift the battery along with its cable off the palm rest and keyboard assembly

Step 4 — Align the Screw Holes



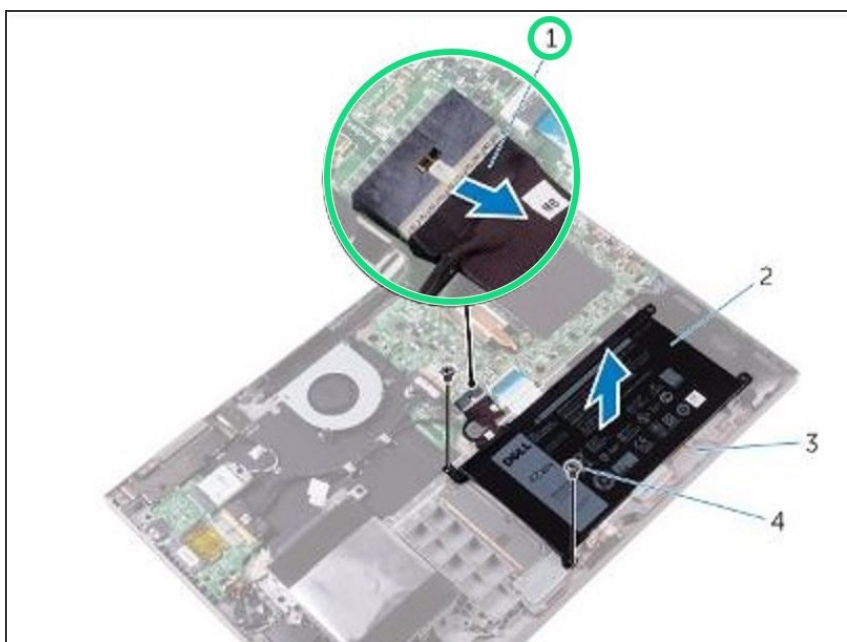
- Align the screw holes on the **NEW** battery with the screw holes on the palm rest and keyboard assembly.

Step 5 — Replace the Screws



- Replace the two screws (M2x3) that secure the battery to the palm rest and keyboard assembly.

Step 6 — Connect the Battery Cable



- Connect the battery cable to the system board.