



INTRODUCTION

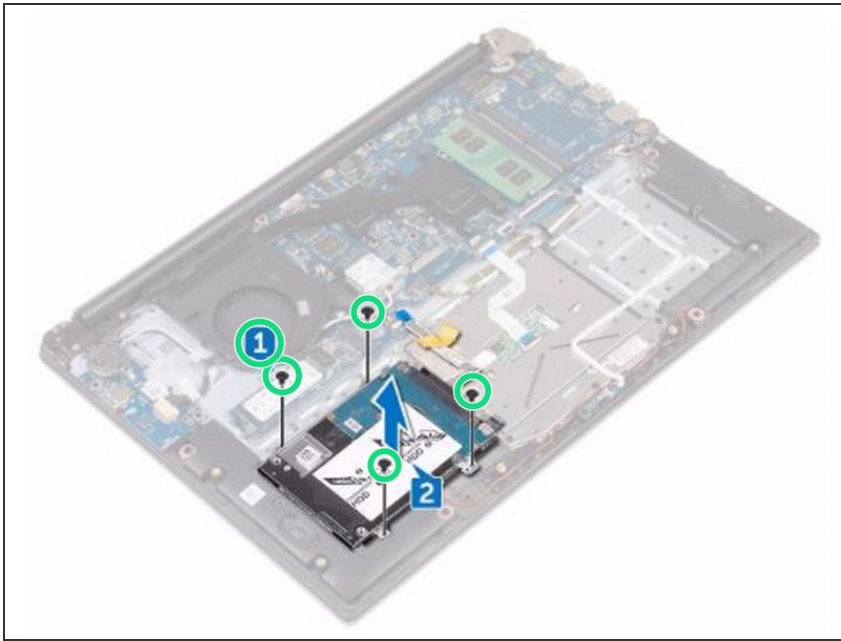
In this guide, we will be showing you how to remove and replace the Hard Drive.



TOOLS:

- [Phillips #0 Screwdriver](#) (1)
-

Step 1 — Remove the Screws

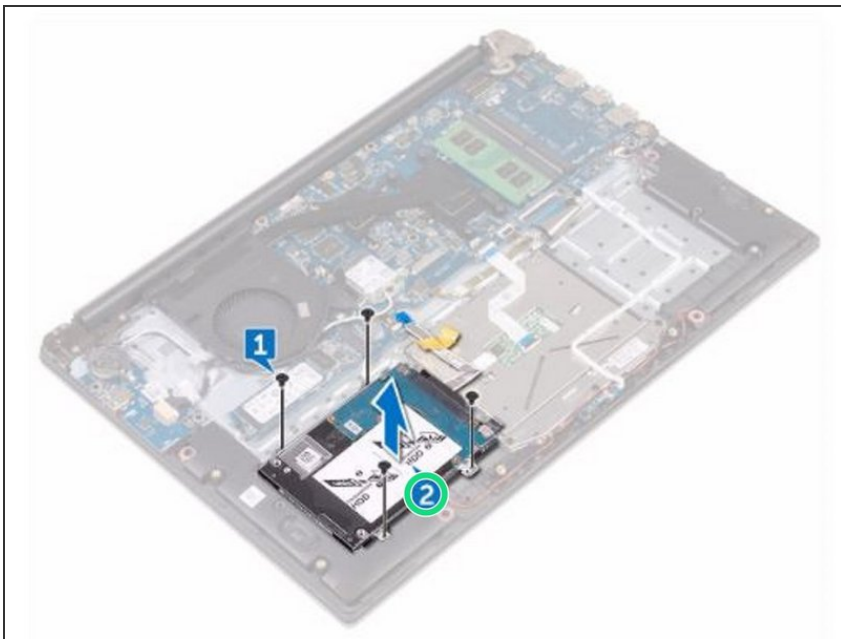


⚠ WARNING: Before working inside your computer, read the safety information that shipped with your computer and follow the steps in [Before Working Inside Your Computer](#). After working inside your computer, follow the instructions in [After Working Inside Your Computer](#).

⚠ CAUTION: Hard drives are fragile. Exercise care when handling the hard drive.

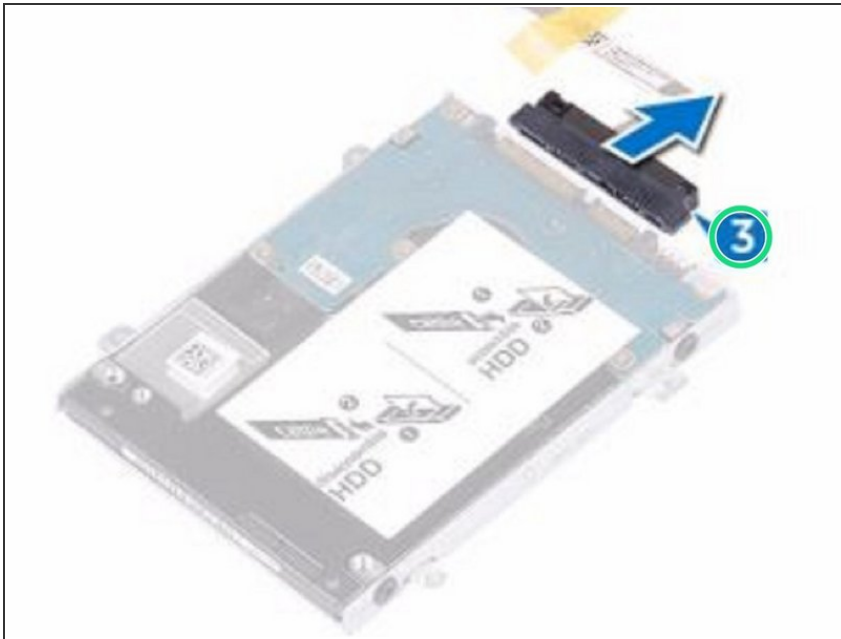
- Remove the four screws (M2x3) that secure the hard-drive assembly to the palm rest and keyboard assembly.

Step 2 — Lifting the Hard Drive



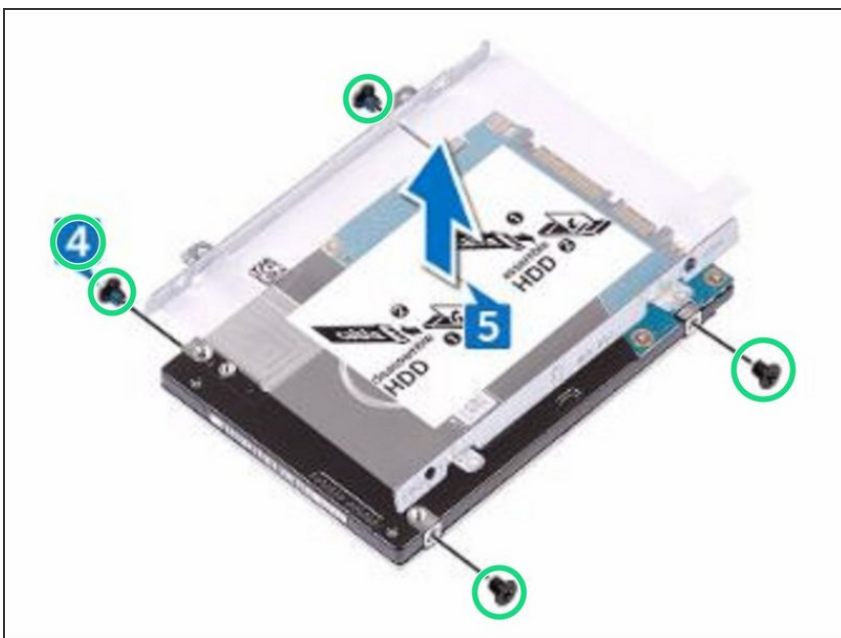
- Lift the hard-drive assembly off the palm rest and keyboard assembly.

Step 3 — Disconnect the Interposer



- Disconnect the interposer from the hard-drive assembly.

Step 4 — Remove the Screws



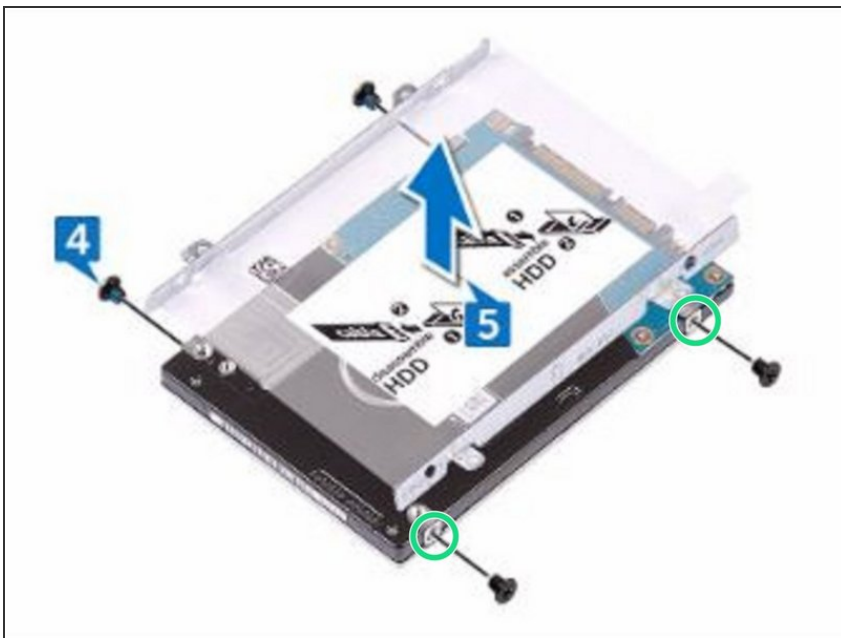
- Remove the four screws (M3x3) that secure the hard-drive bracket to the hard drive.

Step 5 — Lifting the Hard Drive Bracket



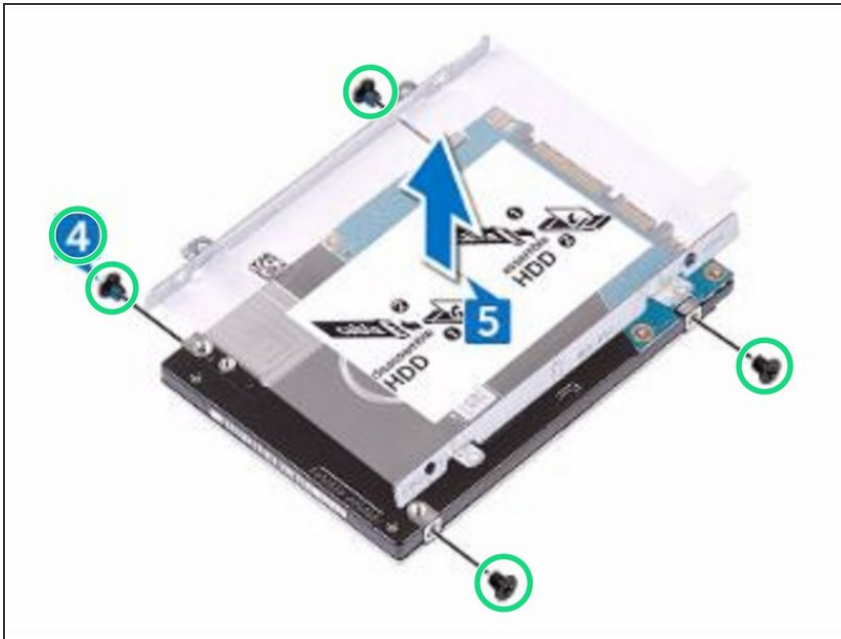
- Lift the hard-drive bracket off the hard drive.

Step 6 — Align the Screw Holes



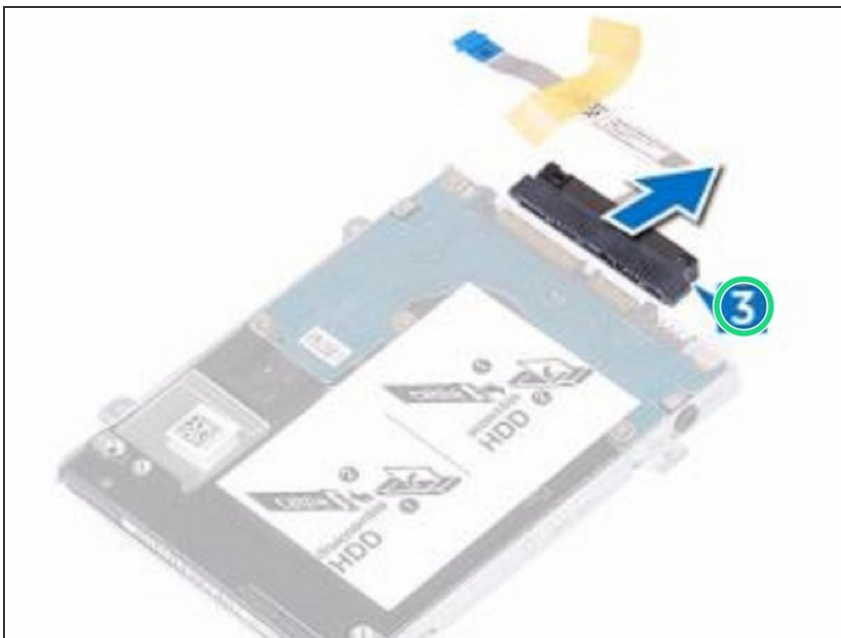
- Align the screw holes on the hard-drive bracket with the screw holes on the **NEW** hard drive.

Step 7 — Replace the Screws



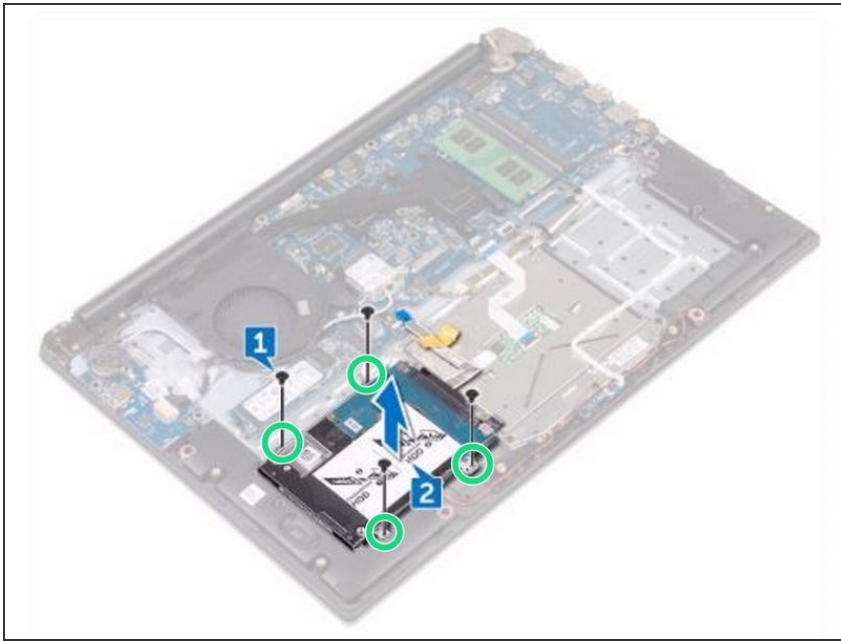
- Replace the four screws (M3x3) that secure the hard-drive bracket to the hard drive.

Step 8 — Connect the Interposer



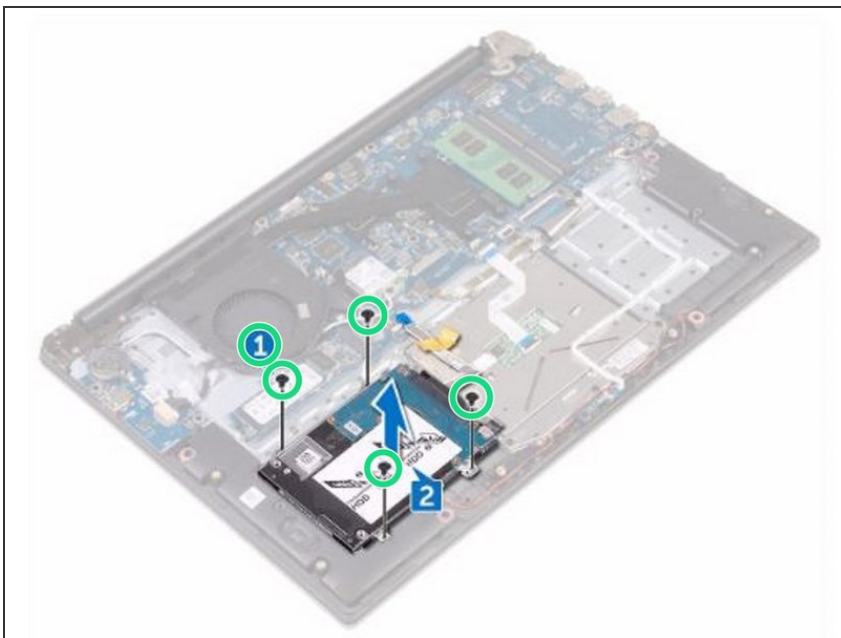
- Connect the interposer to the hard-drive assembly.

Step 9 — Align the Screw Holes



- Align the screw holes on the hard-drive assembly with the screw holes on the palm rest and keyboard assembly.

Step 10 — Replace the Screws



- Replace the four screws (M2x3) that secure the hard-drive assembly to the palm rest and keyboard assembly.