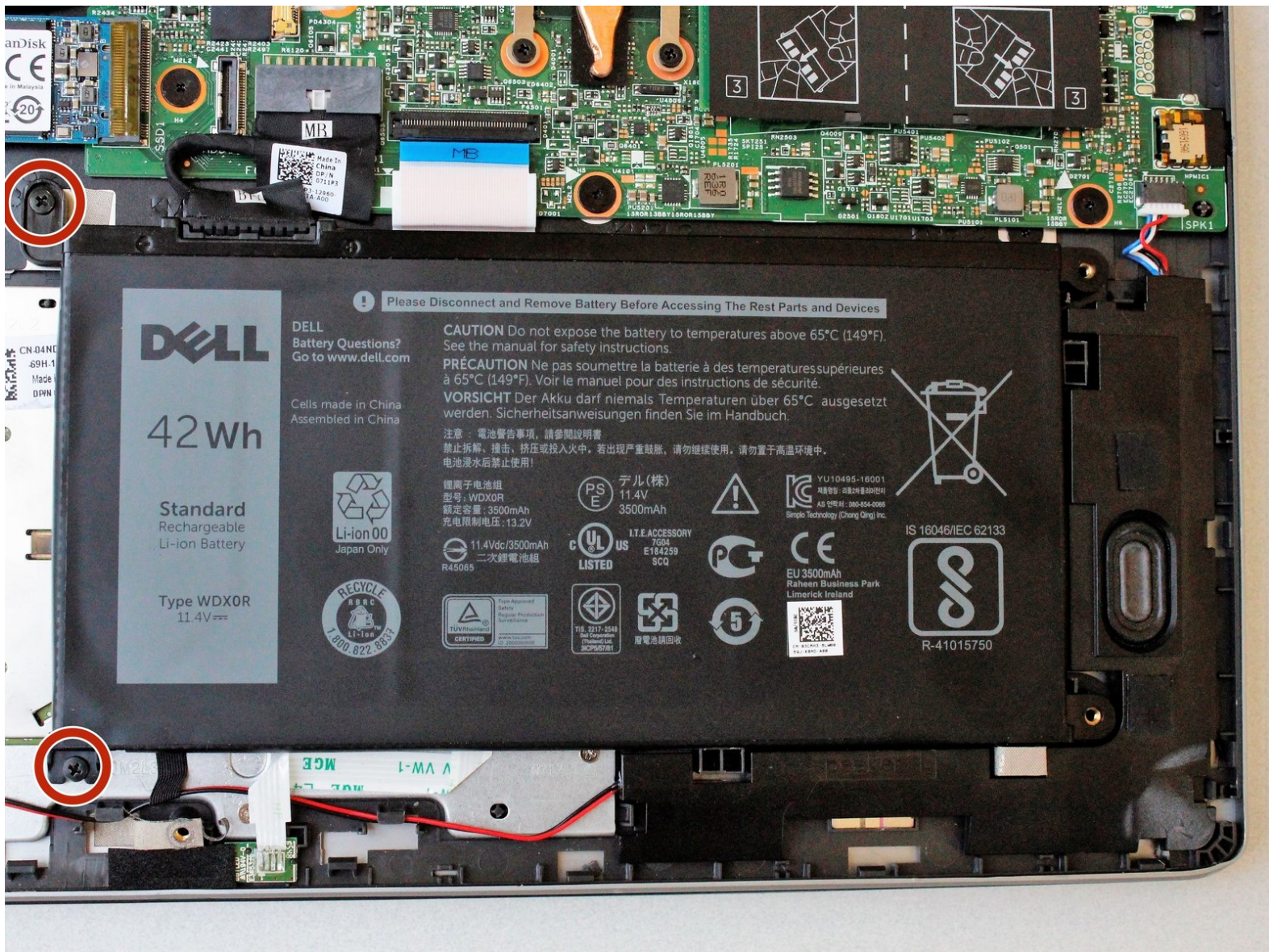




Dell Inspiron 15 7579 Battery Replacement

How to replace the battery from the Dell Inspiron 15 7579.

Written By: Inaki Madrigal



INTRODUCTION

If your laptop is unresponsive or you have a consistently low battery life, we recommend starting with our [troubleshooting guide](#). If those tips don't solve your problem, then follow this guide to replace your battery.



TOOLS:

- [Phillips #1 Screwdriver](#) (1)
 - [Metal Spudger](#) (1)
-

Step 1 — Back Panel



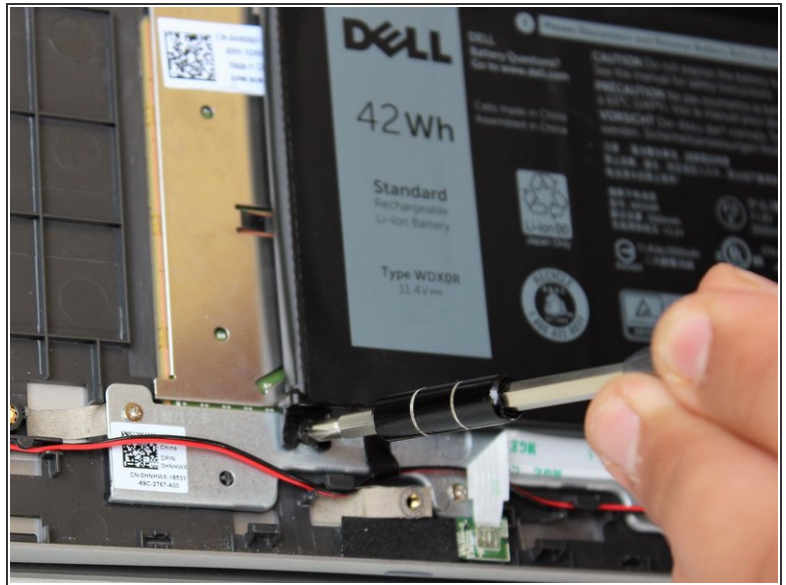
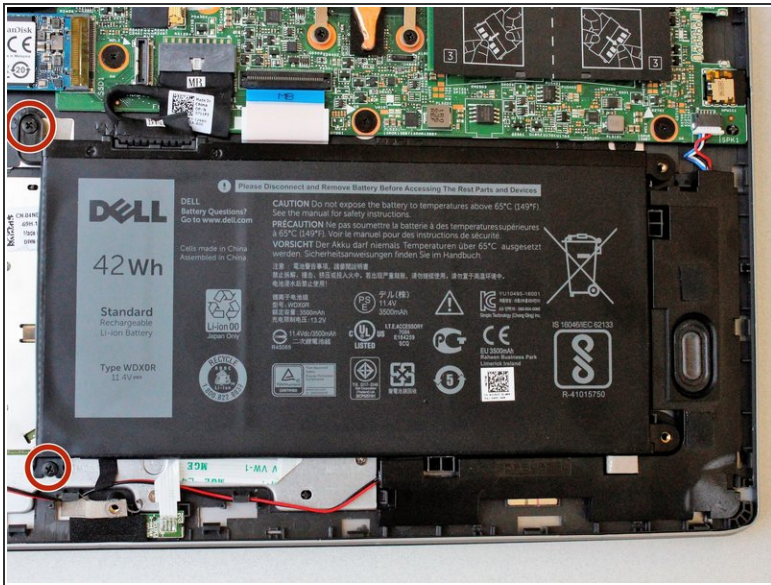
- Remove the ten 7.9 mm screws with the Phillips #1 screwdriver.

Step 2



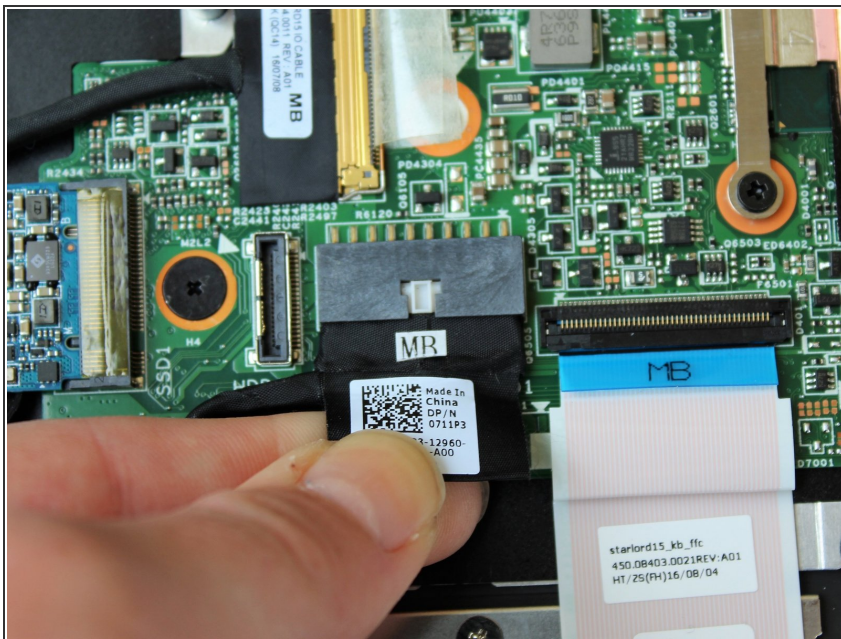
- Insert metal spudger into a gap in between the back panel and the back of the screen.
- Pry off the back panel using the metal spudger as a lever, and remove the back panel by lifting the rest off by hand.

Step 3 — Battery



- Remove the two 7.8 mm long screws on the left side of the battery with the Phillips #1 screwdriver.

Step 4



- Pull out the fabric clip that attaches the battery to the main board from the connector by hand.
- Remove the battery from the device.

To reassemble your device, follow these instructions in reverse order.