



# Dell Inspiron 15 7579 SSD M.2 Drive Replacement

How to remove and replace your M.2 SSD drive in your Dell Inspiron 15 7579.

Written By: Inaki Madrigal



---

# INTRODUCTION

Your storage system is important. Before starting this guide, remember that damaging this component will cause you to lose your data. When ready, follow this guide.

---

## TOOLS:

- [Metal Spudger](#) (1)
  - [Phillips #1 Screwdriver](#) (1)
  - [Spudger](#) (1)
-



## Step 1 — Back Panel



- Remove the ten 7.9 mm screws with the Phillips #1 screwdriver.

## Step 2



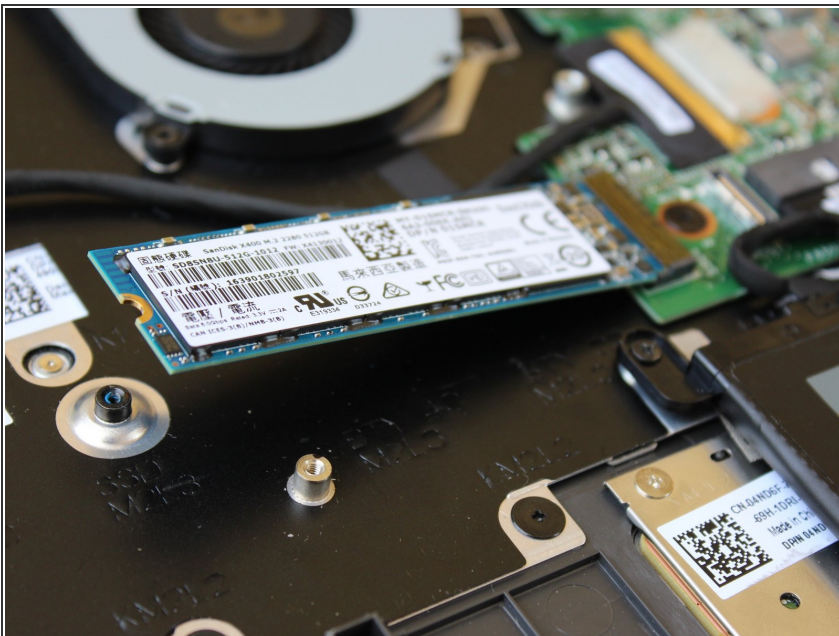
- Insert metal spudger into a gap in between the back panel and the back of the screen.
- Pry off the back panel using the metal spudger as a lever, and remove the back panel by lifting the rest off by hand.

## Step 3 — SSD M.2 Drive



- Remove the single 3.6 mm screw holding the left side of the M.2 SSD card with a Phillips #1 screwdriver.

## Step 4



- Gently pull out the SSD card at the angle it is relaxed in to remove it. It is easiest to do this by hand.
- ⚠ Be gentle when pulling the SSD card out. It should take little effort to get it to slide out properly.

To reassemble your device, follow these instructions in reverse order.