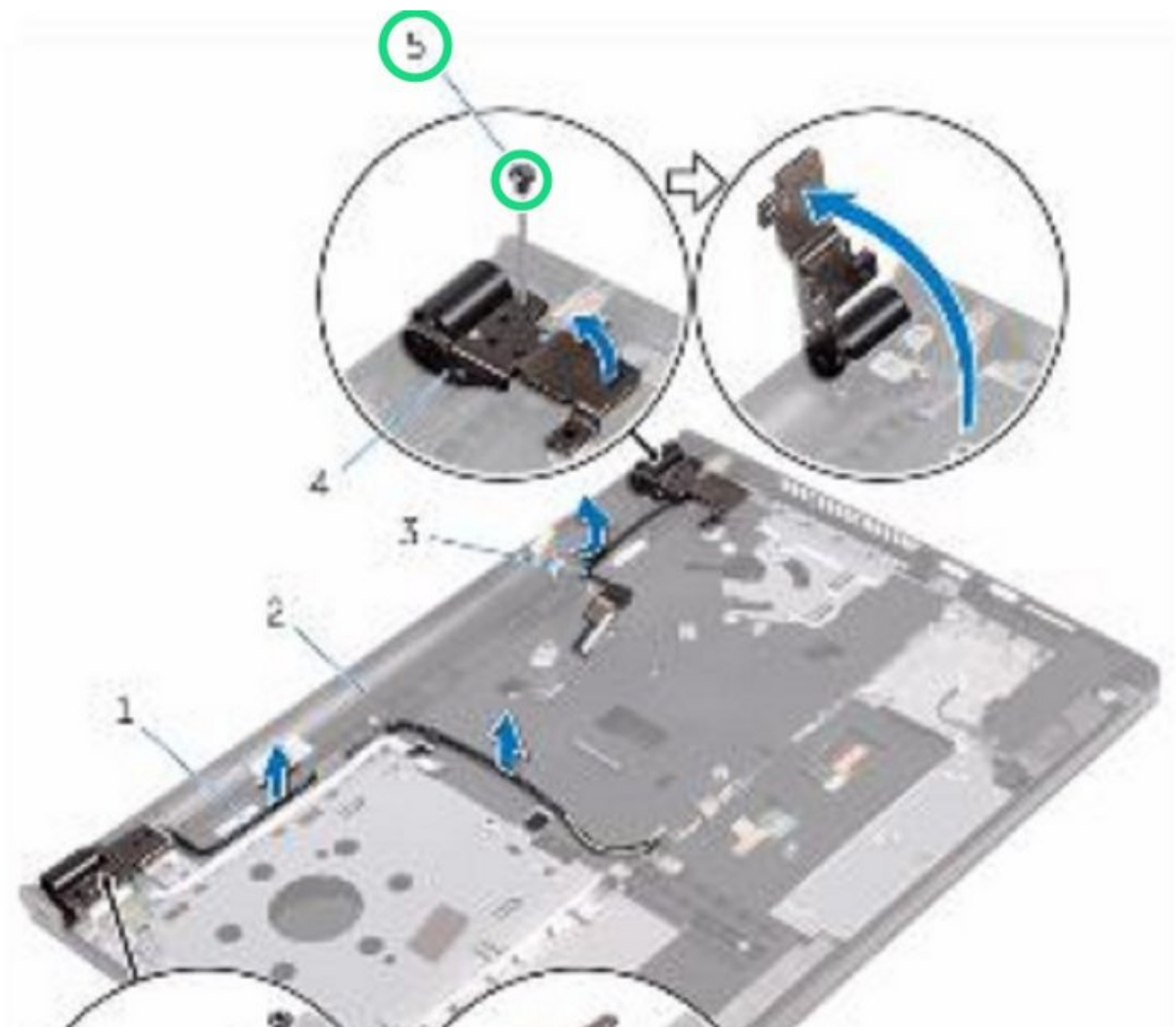




# Dell Inspiron 15 Display Assembly Replacement

Written By: Terrence15



---

## INTRODUCTION

In this guide, we will be showing you how to remove and replace the Display Assembly.

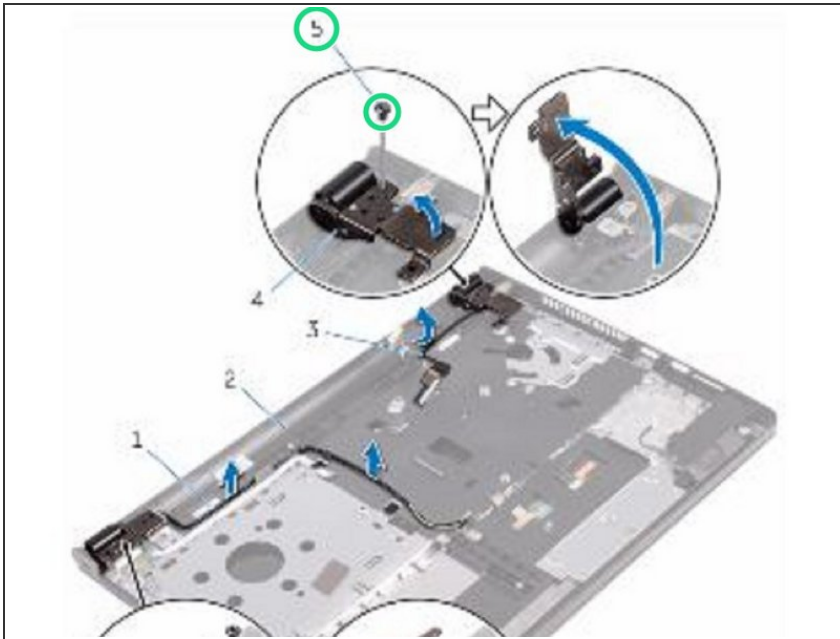
---



### TOOLS:

- [Phillips #0 Screwdriver](#) (1)
-

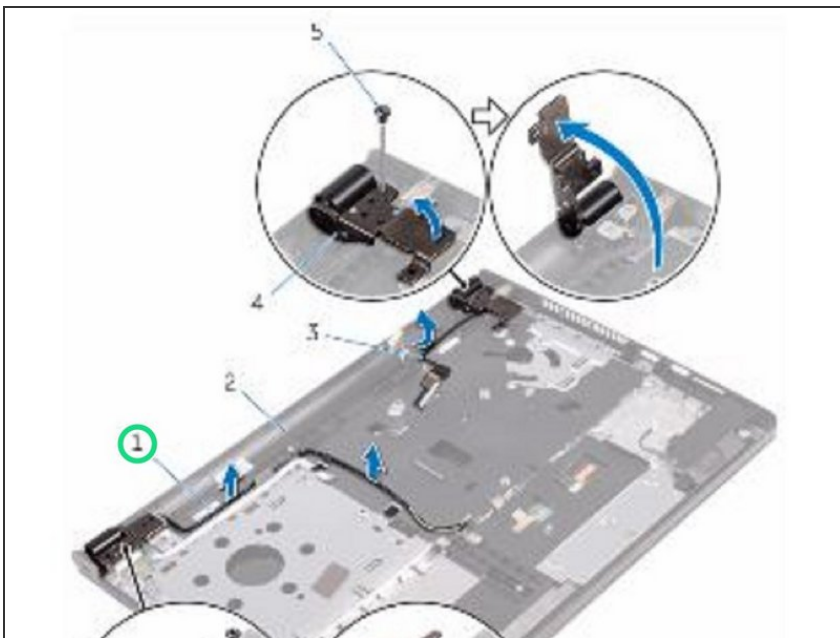
## Step 1 — Remove the Screws



**⚠ WARNING:** Before working inside your computer, read the safety information that shipped with your computer and follow the steps in [Before working inside your computer](#). After working inside your computer, follow the instructions in [After working inside your computer](#).

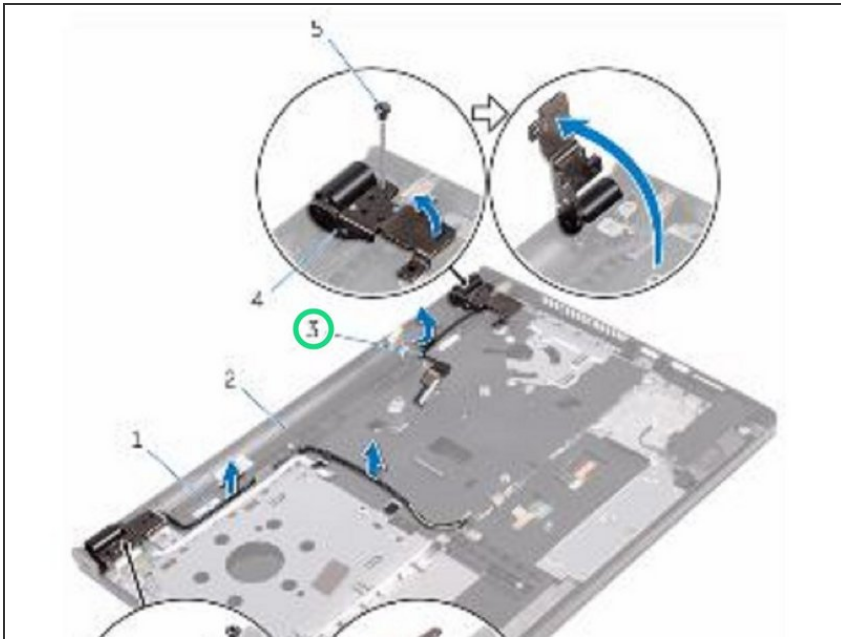
- Remove the screws that secure the display hinges to the palm-rest assembly and open the hinges to an angle of 90 degrees.

## Step 2 — Note the Antenna Cable



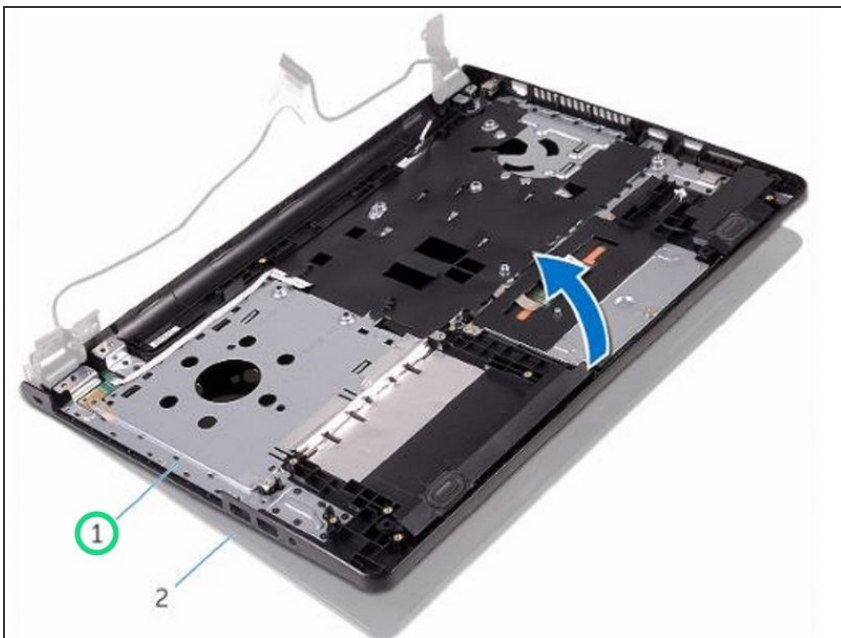
- Note the antenna cable routing and remove the cable from its routing guides on the palm-rest assembly.

### Step 3 — Noting the Display Cable



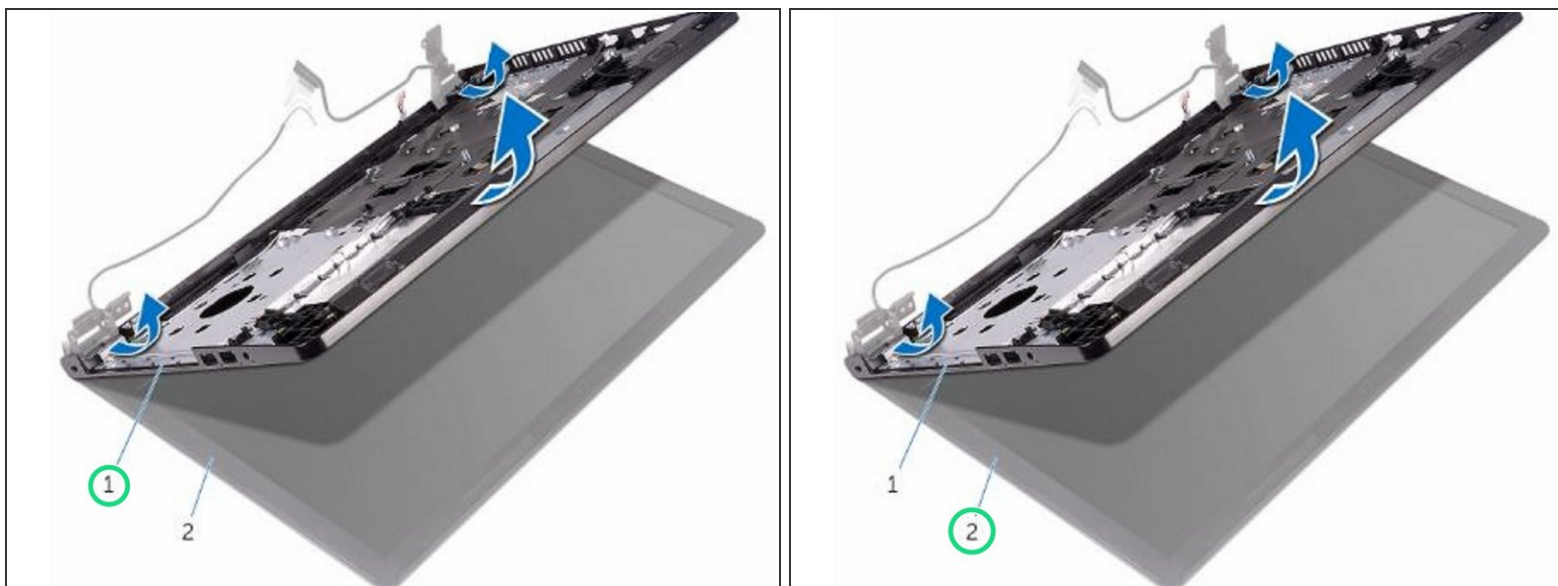
- Note the display cable routing and remove the cable from its routing guides on the palm-rest assembly.

### Step 4 — Open the Assembly



- Open the palm-rest assembly.

## Step 5 — Lifting the Palm-Rest Assembly



- Lift the palm-rest assembly at an angle off the display assembly.

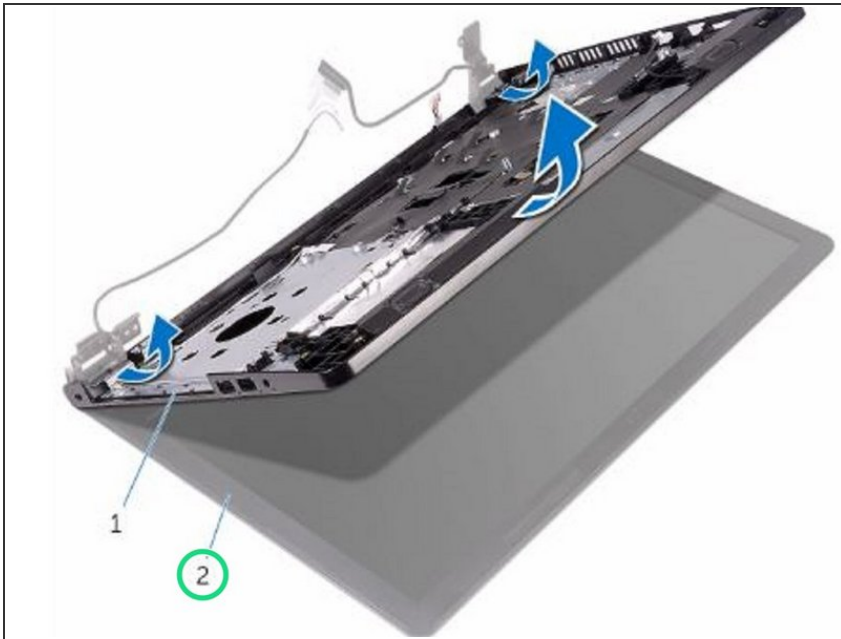
## Step 6 — Placing the Display Assembly



- Place the display assembly on a clean, flat surface.

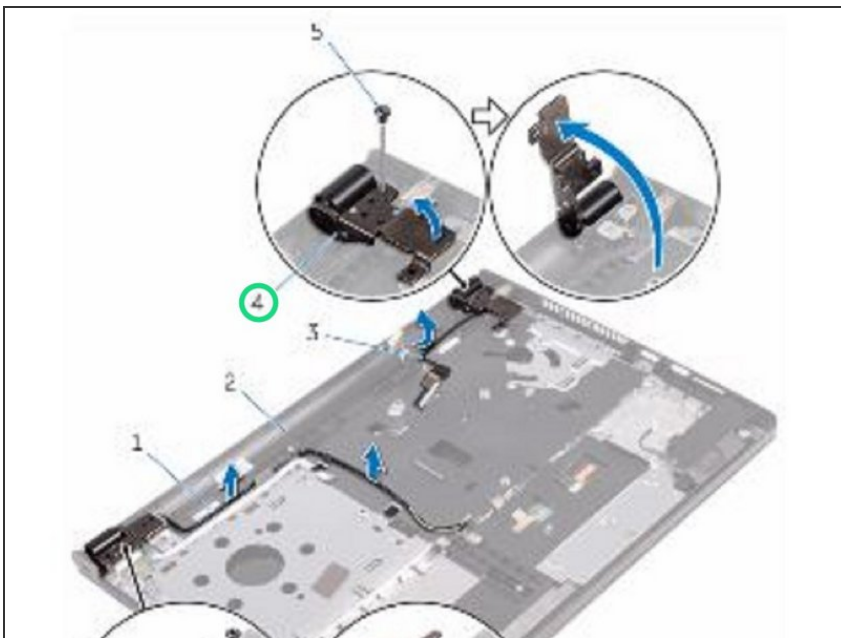


## Step 7 — Placing the Display Assembly



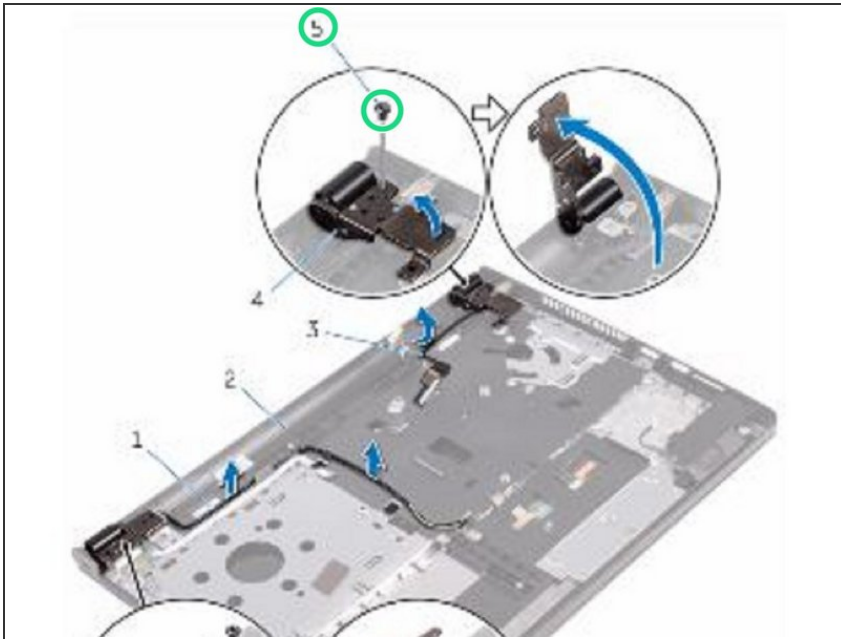
- Place the **NEW** display assembly on the palm-rest assembly.

## Step 8 — Close the Display Hinges



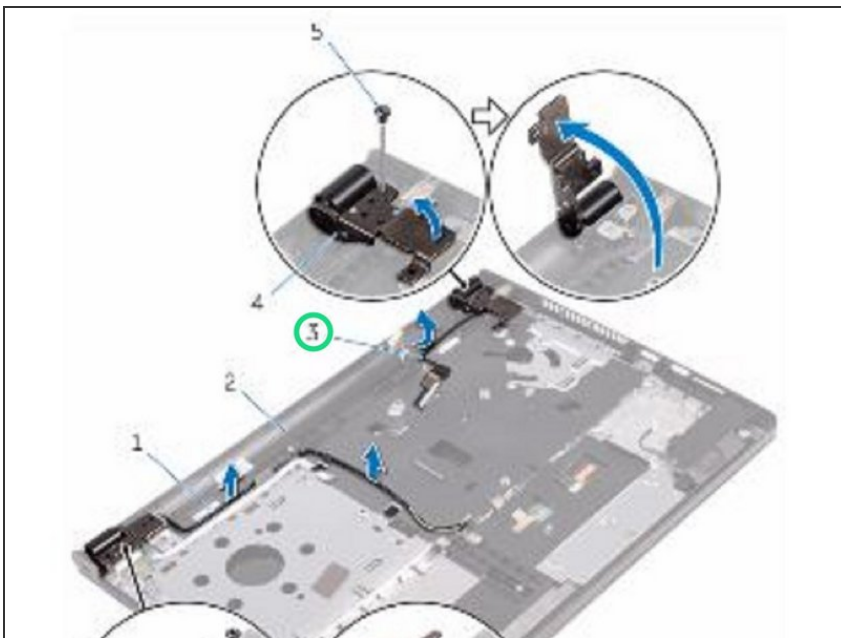
- Close the display hinges and align the screw holes on the display hinges with the screw holes on the palm-rest assembly.

## Step 9 — Replace the Screws



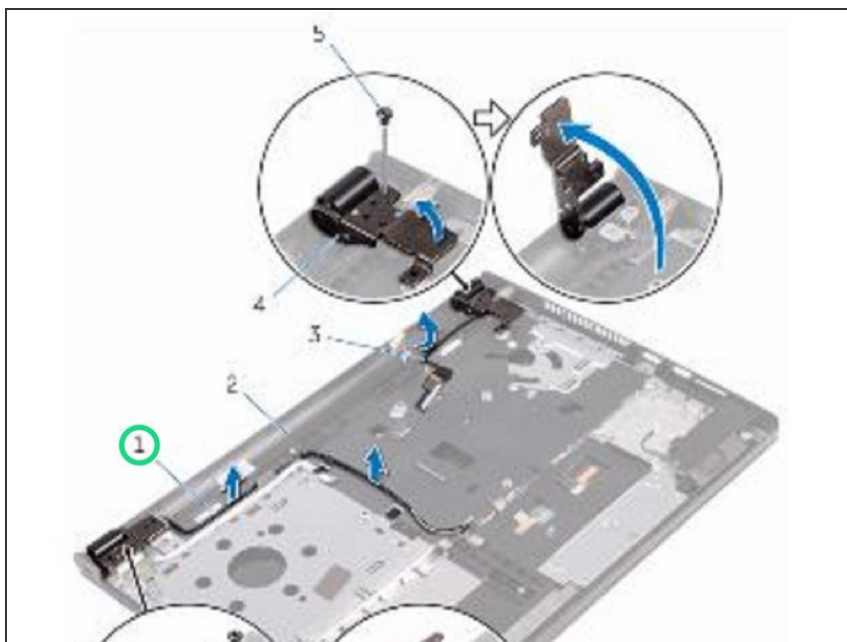
- Replace the screws that secure the display hinges to the palm-rest assembly.

## Step 10 — Route the Display Cable



- Route the display cable through its routing guides on the palm-rest assembly.

## Step 11 — Routing the Antenna Cables



- Route the antenna cables through its routing guides on the palm-rest assembly.

## Step 12 — Close the Display



- Close the display and turn the computer over.