



Dell Inspiron 15 N5040 Hard Drive Replacement

Written By: Terrence15

INTRODUCTION

In this guide, we will be showing you how to remove and replace the Hard Drive.






TOOLS:

- [Essential Electronics Toolkit](#) (1)

Step 1 — CAUTION



-  **WARNING:** Before working inside your computer, read the safety information that shipped with your computer. Follow the instructions in ["Before You Begin"](#).
-  **CAUTION:** To avoid electrostatic discharge, ground yourself by using a wrist grounding strap or by periodically touching an unpainted metal surface (such as a connector on your computer).
-  **CAUTION:** Hard drives are extremely fragile. Exercise care when handling the hard drive.

Step 2 — Remove the Screws



- Remove the two screws from the computer base.

Step 3 — Sliding the Hard Drive



- Slide the hard drive to the right to disconnect it from the connector on the system board.

Step 4 — Lifting the Hard Drive



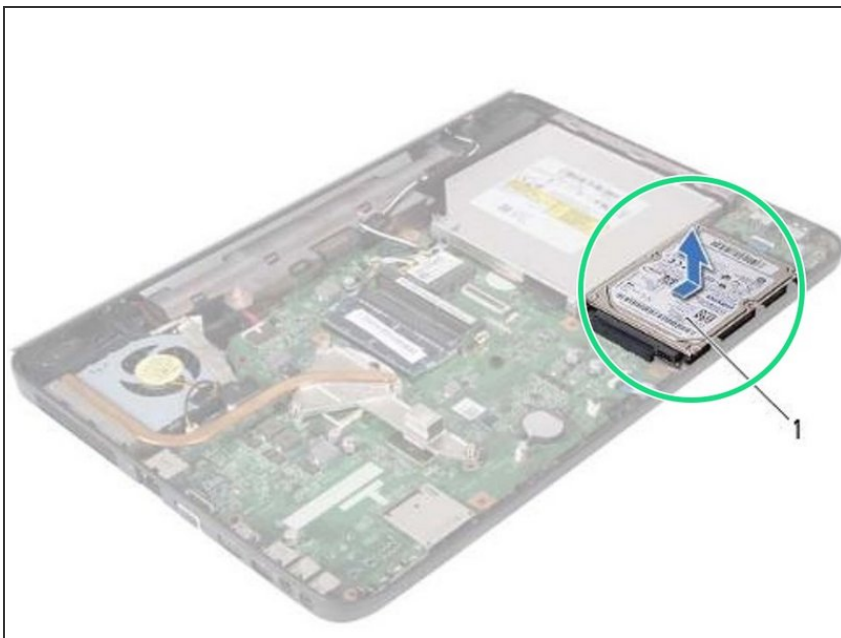
- Lift the hard drive out of the computer base.

Step 5 — Placing the Hard Drive



- Place the **NEW** hard drive on the computer base.

Step 6 — Push the Hard Drive



- Push the hard drive towards the left to connect it to the connector on the system board.

Step 7 — Replace the Screws



- Replace the two screws to the computer base.