



Dell Inspiron 15-3521 Wireless Card Replacement

This guide will demonstrate the access and replacement of a wireless card in a Dell Inspiron 15-3521 laptop.

Written By: Andrew Dippre



INTRODUCTION

Often times, if one is experiencing consistently unreliable wireless connectivity and has tried to troubleshoot this problem using provided software solutions the hardware can be at fault for loss of connectivity. Furthermore, if one wants to upgrade one's wireless speed, a wireless card replacement is in order.



TOOLS:

- [Flat Head ScrewDriver](#) (1)
 - [Phillips #0 Screwdriver](#) (1)
-

Step 1 — Remove the Battery



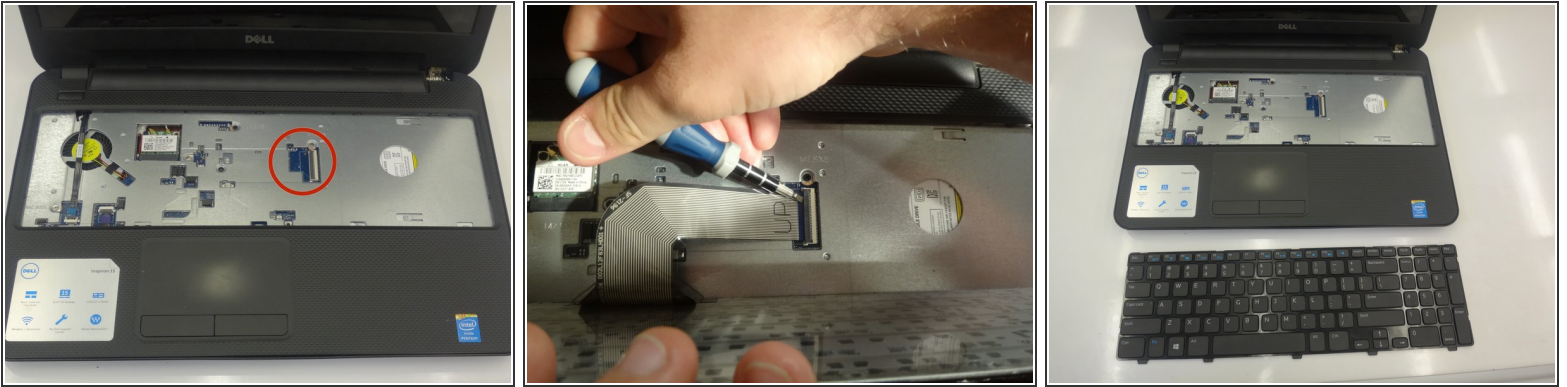
- Flip the laptop over.
- Slide the latch toward the outside of the laptop to unlock the battery.
- Lift the battery out of the laptop.

Step 2 — Removing Keyboard



- Flip laptop right side up
- Using a flat head screwdriver, depress locking tabs holding keyboard into place
- Using a spudger, pry the keyboard from the laptop, giving room to access with hands.
- Using hands, remove keyboard completely from laptop body, leaving only the connecting cord that attaches the keyboard to the laptop.

Step 3 — Disconnecting the Keyboard Cable



- To disconnect the keyboard, locate the keyboard cable locking mechanism.
- Open the locking mechanism by gently pulling up.
- Slide out the keyboard cable from the interface to separate the keyboard from the laptop.

Step 4 — Wireless Card Removal



- Remove the wireless card cables powering the wireless card
- Unscrew the wireless card using a PH0 screwdriver.
- Replace with a new wireless card, reattaching the power cables.

To reassemble your device, follow these instructions in reverse order.