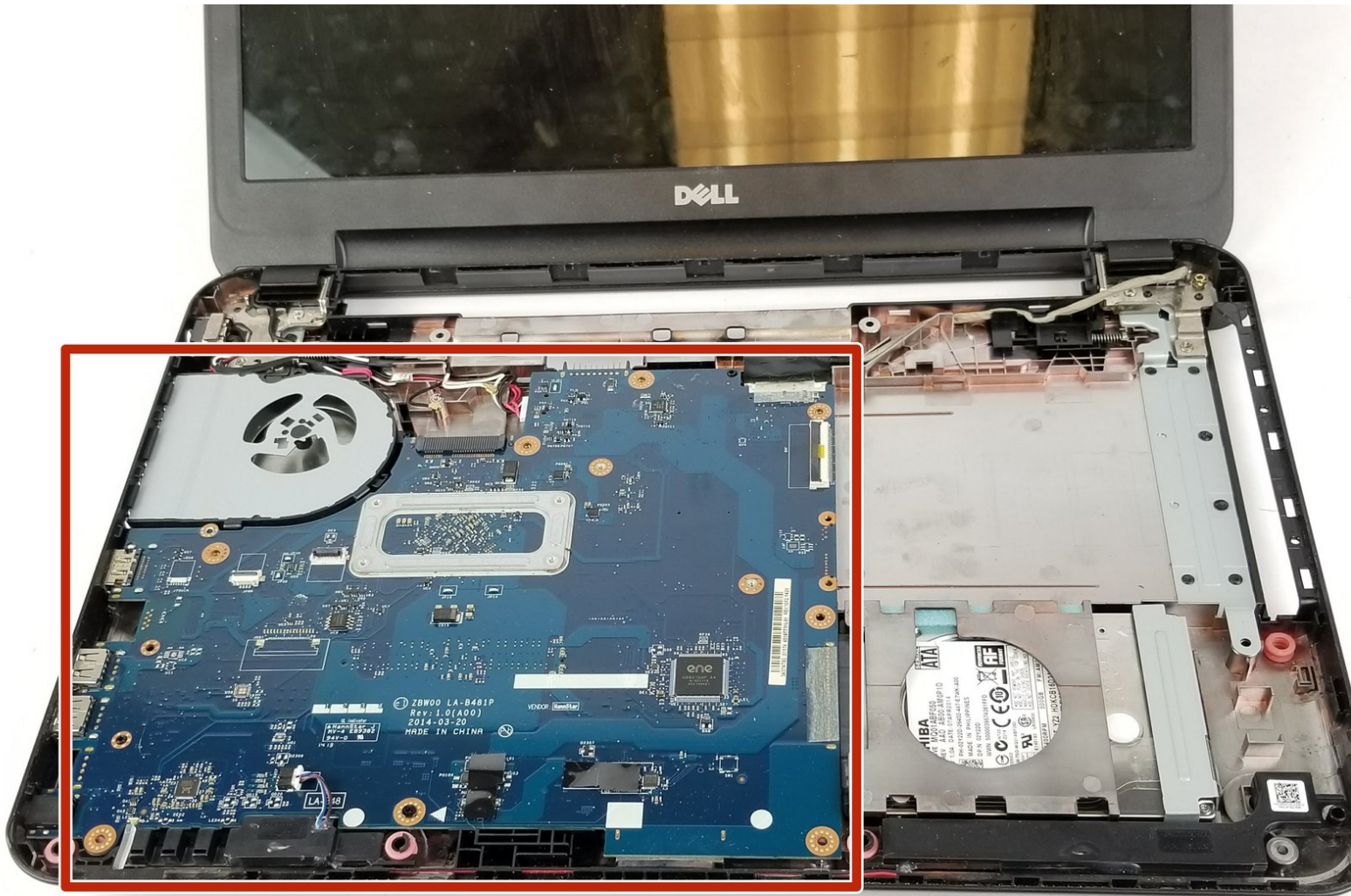




Dell Inspiron 15-3531 Motherboard Replacement

Replace your motherboard failing to populate programs or recognize any peripherals.

Written By: Kody Dahlke



INTRODUCTION

As laptop motherboards age, they have a chance to fail and may need to be replaced. Make sure the motherboard is at room temperature and not near any hazardous materials that could melt or destroy the motherboard during the removal process.




TOOLS:

- [Spudger](#) (1)
 - [Phillips #0 Screwdriver](#) (1)
 - [Phillips #1 Screwdriver](#) (1)
-

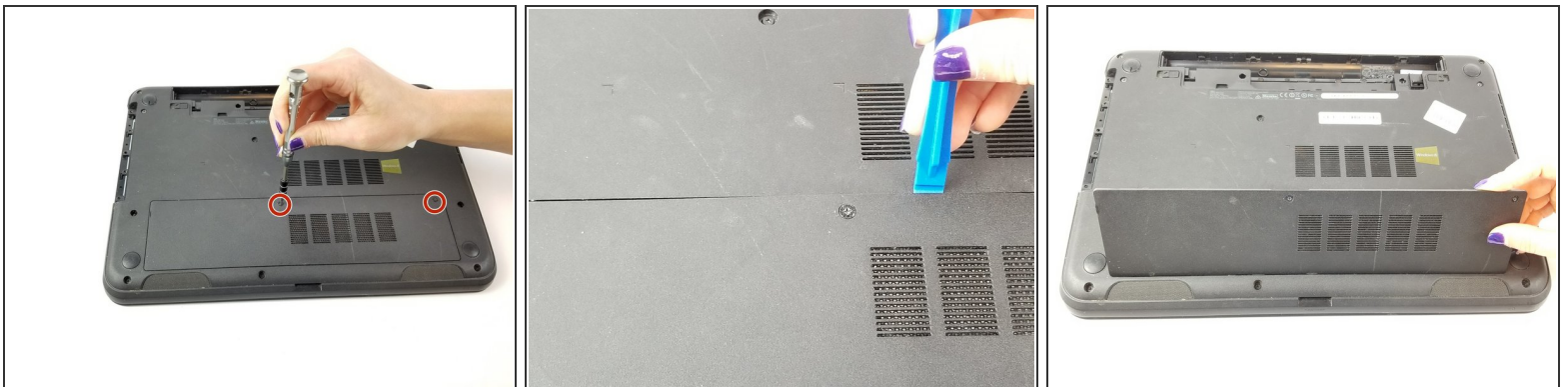
Step 1 — Battery



 Remove the battery to avoid electrical discharge while working with this system.

- Flip the laptop over.
- Slide the latches toward the edges to unlock the battery.
- Lift the battery out of the laptop.

Step 2 — Motherboard



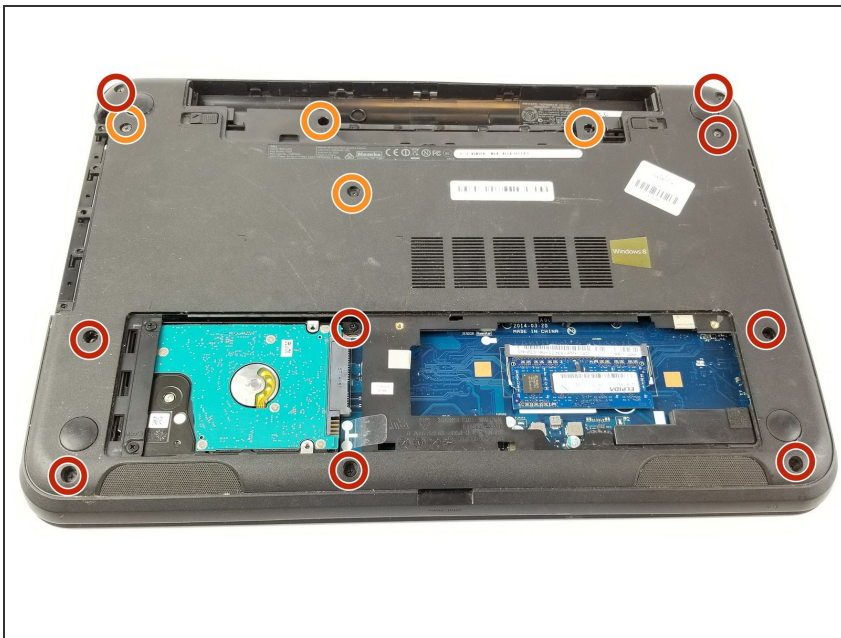
- Loosen the two screws on the access panel using the PH1 head screwdriver.
- Pry the access panel open with the spudger.

Step 3



- Remove the memory card by pulling apart the latches holding it in place.

Step 4



- Remove the nine 8.65mm screws holding the backplate to the laptop using the PH0 head screwdriver.
- Remove the four 1.22 mm screws holding the backplate to the laptop using the PH0 head screwdriver.

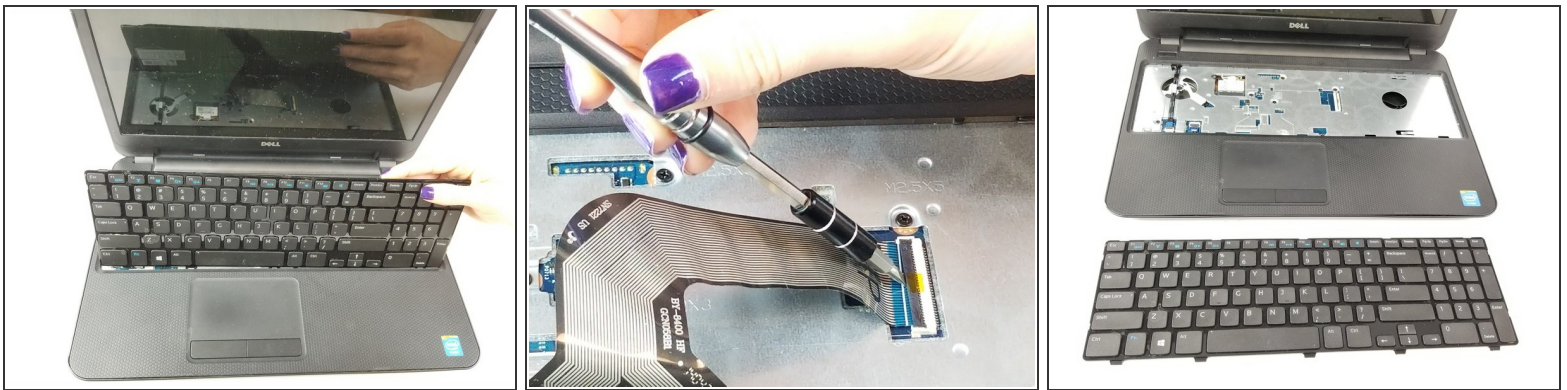
Step 5




- Depress (push in, not down) the five tabs at the top of the keyboard and the two on each side of the keyboard using a flat head screwdriver.
- Pry the keyboard from the laptop using the spudger.

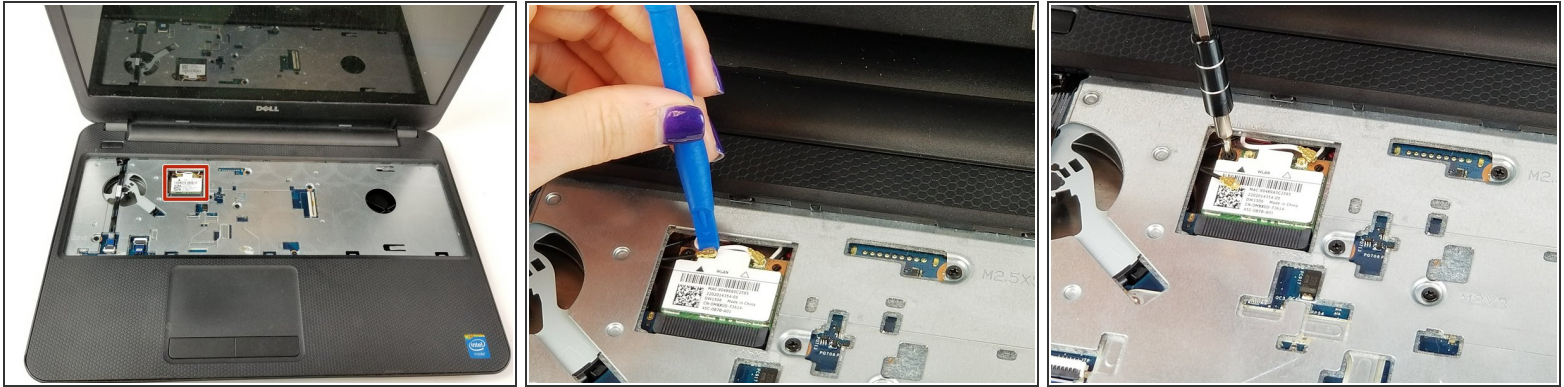
 Be careful when lifting out the keyboard because there is a cable connecting it to the laptop.

Step 6



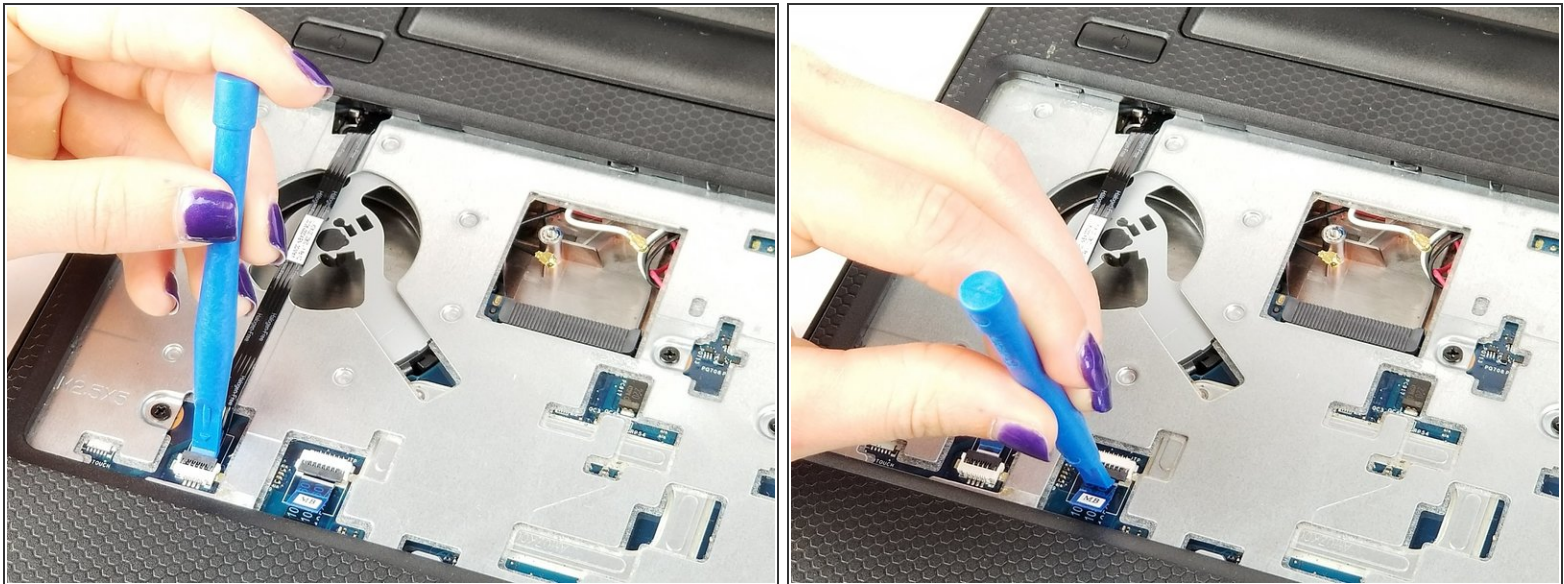
- Lift the latch holding down the cable using a flat head screwdriver.
 - Slide the cable out.
-  This will free the keyboard from the laptop.

Step 7



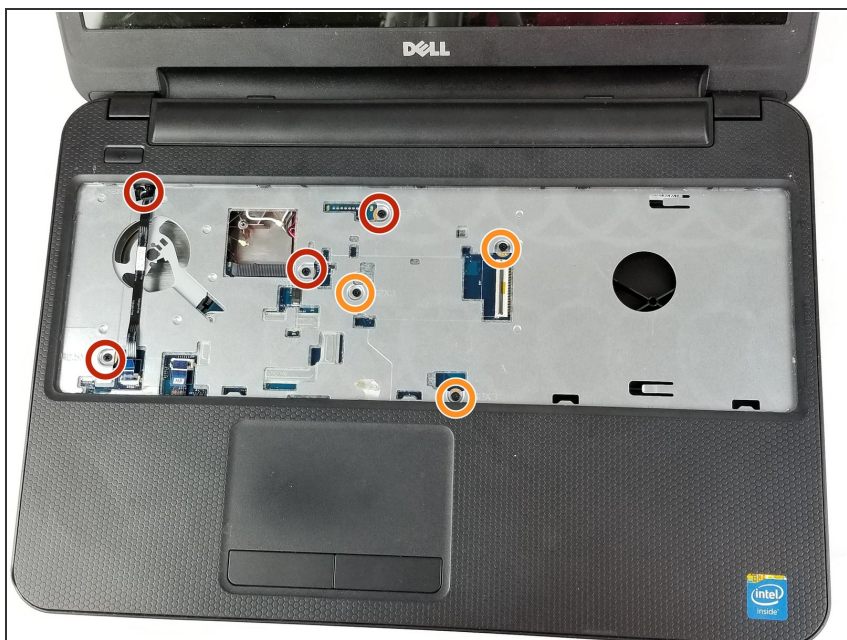
- Disengage both antenna (black and white) cables by lifting them up using the spudger.
- Unscrew the one 8.65 mm screw holding the wireless card.
- Remove the wireless card.

Step 8



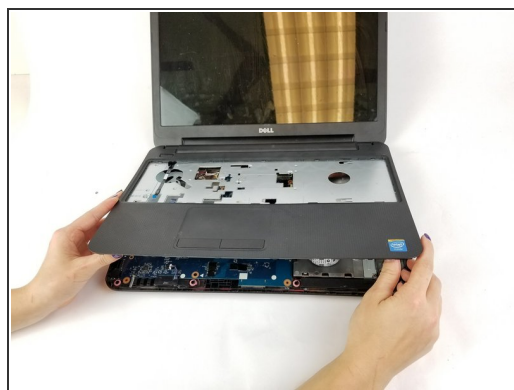
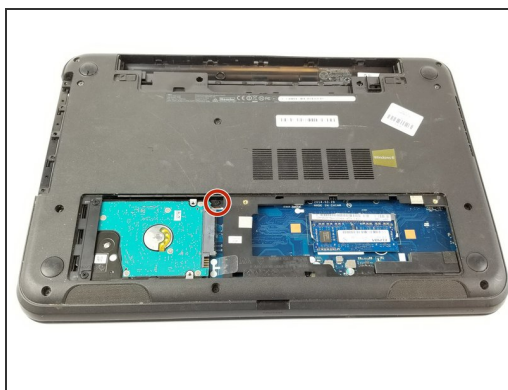
- Lift the locking tab with the spudger and pull the cable from the locking tab.
- Repeat with the second locking tab.

Step 9



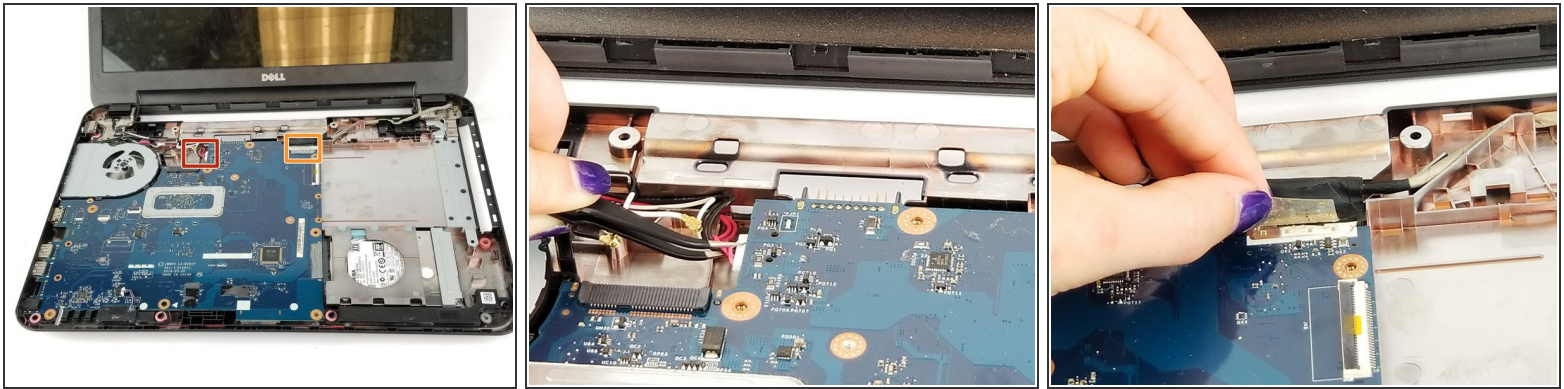
- Remove the four 8.65 mm screws underneath the keyboard plate.
- Remove the three 1.22 mm small screws underneath the keyboard plate.

Step 10



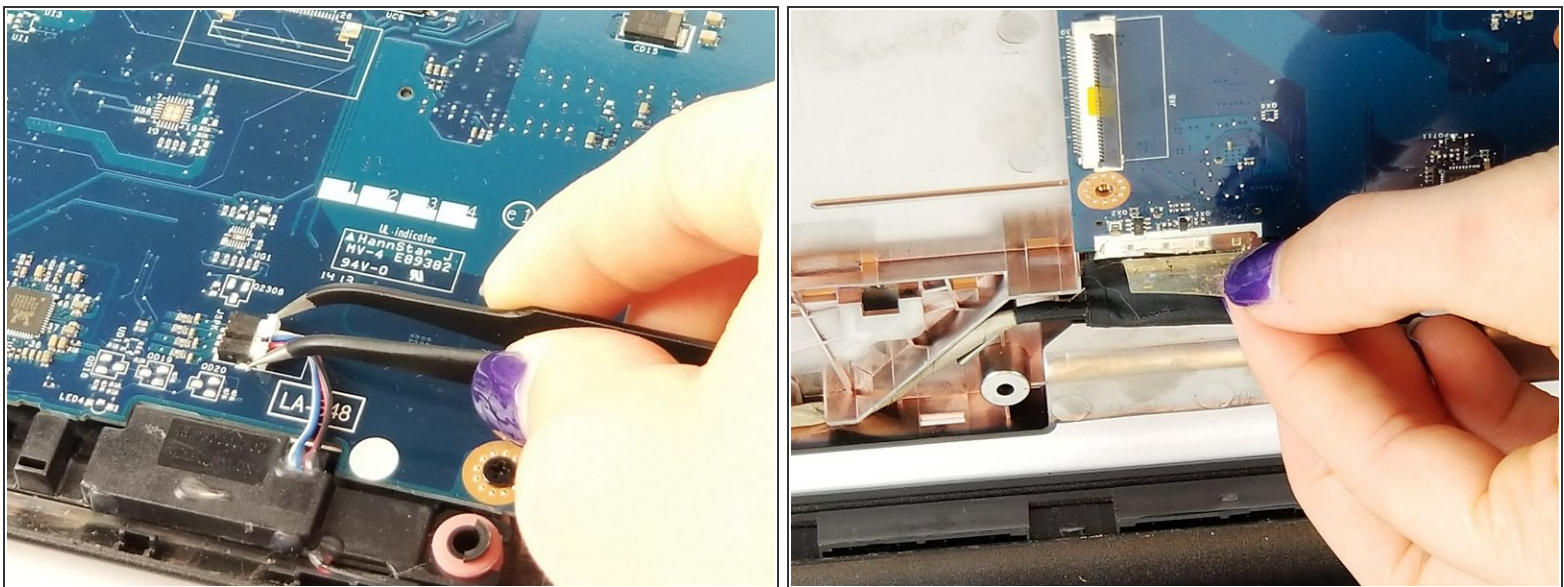
- Separate the palmrest from the base of the laptop using the spudger to loosen the palmrest along the edges.
- Make sure to remove all the screws, especially the inconspicuous 8.65 mm screw next to the hard drive.

Step 11



- Remove the cables on the upper left side of the laptop using flat tweezers.
- Remove the cable from the upper right hand corner.

Step 12



- Remove the speaker cable.
- Remove cable on the right-hand side.

Step 13



- Unscrew the one 8.65 mm screw holding the motherboard in place with a PH0 size head screwdriver.
- Remove the motherboard.

To reassemble your device, follow these instructions in reverse order.