



Dell Inspiron 15-3543 Touchpad Replacement

Replace your touchpad so it works properly.

Written By: Brianna Blackburn



INTRODUCTION

Is the touchpad in your Dell Inspiron 15-3543 not working properly, sticking down, or is unresponsive?

If so, here is the guide to fix the problem by simply replacing your touchpad. You will need the #0 Phillips screwdriver and opening tools, in order to remove the 19 screws involved with this replacement and pry the top panel from the bottom panel.



TOOLS:

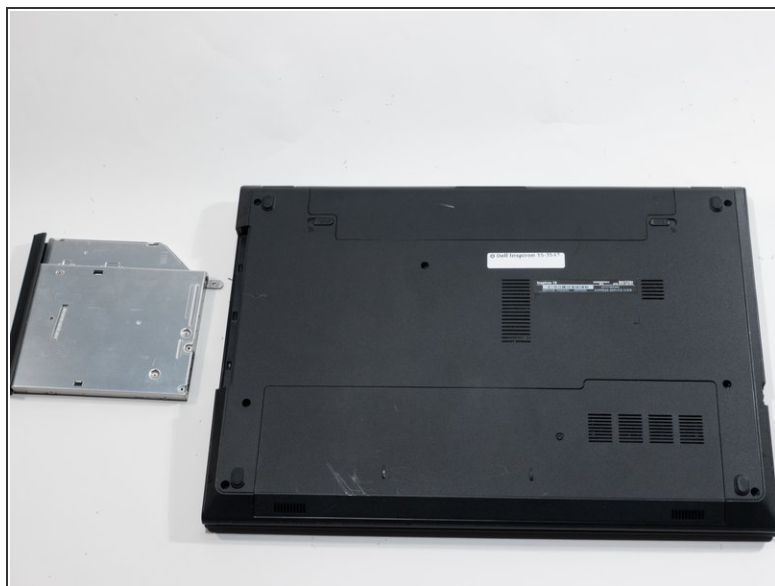
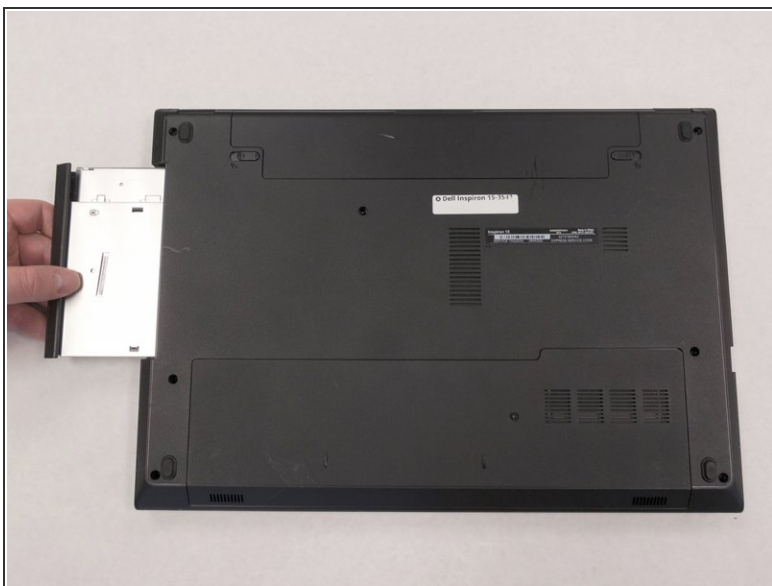
- [Phillips #0 Screwdriver](#) (1)
 - [iFixit Opening Tools](#) (1)
-

Step 1 — Touchpad



- Flip the device over so the bottom is facing up.
- Using a #0 Phillips screwdriver, remove the 4.0mm screw to the right of the disk drive.

Step 2



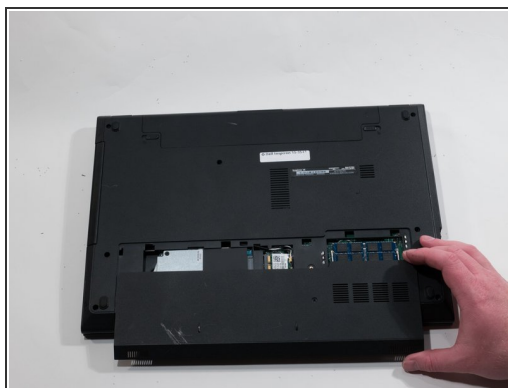
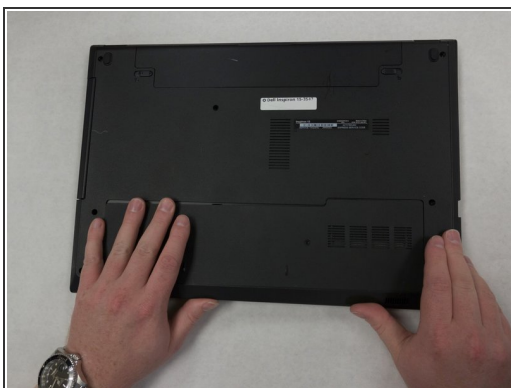
- Pull the disk drive out and sit it to the side.

Step 3



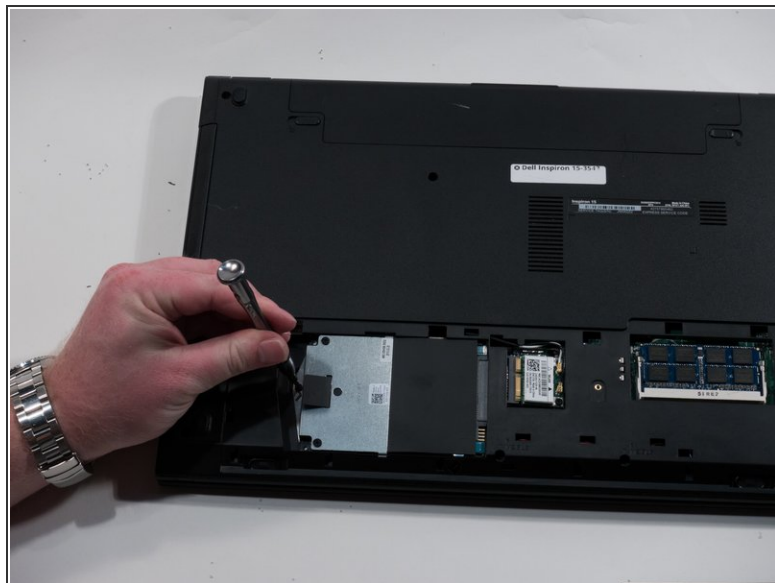
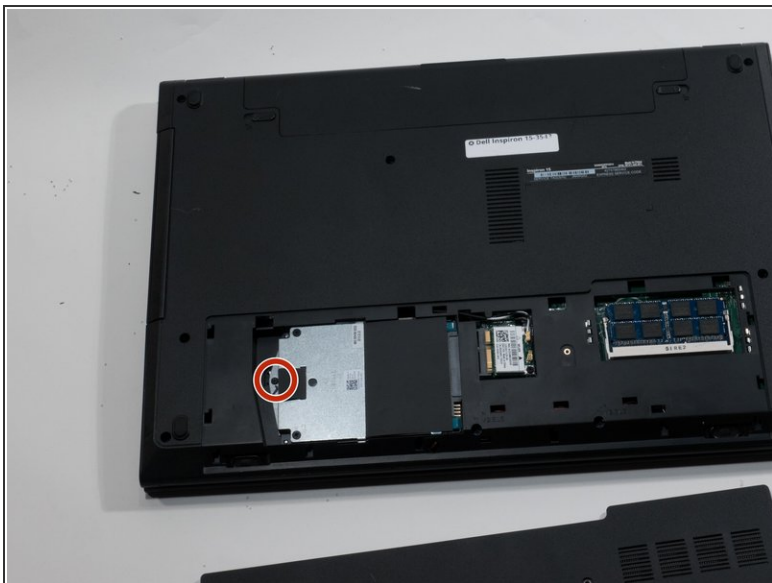
- Using a #0 Phillips screwdriver, remove the 2.0mm screw from the back of the device beside the vents.

Step 4



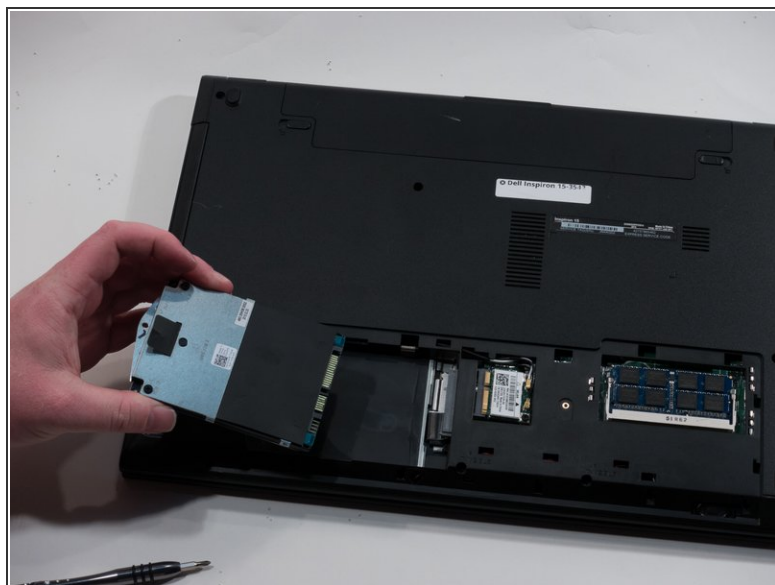
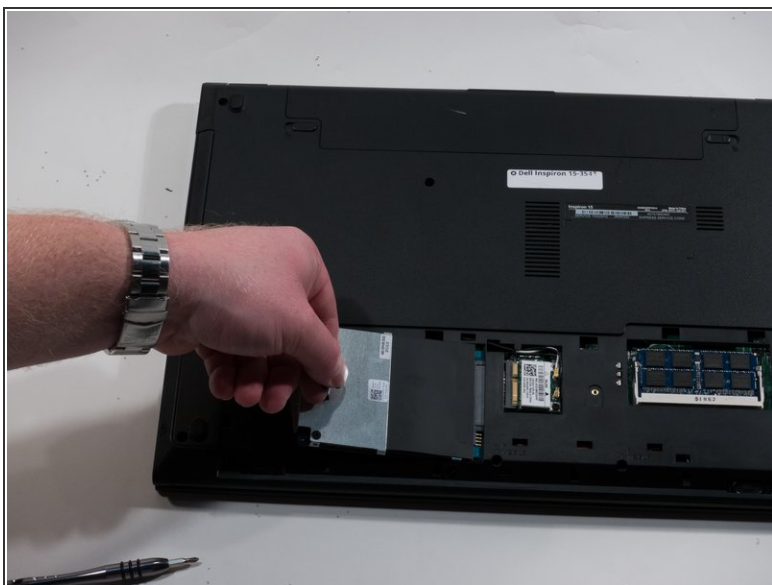
- Slide the panel off by placing your hands on top and, while using a little force, sliding your hands down.

Step 5



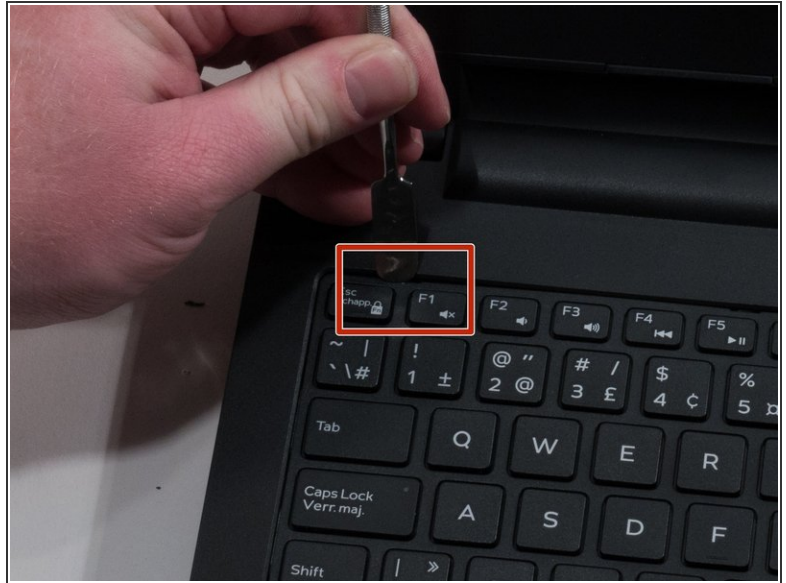
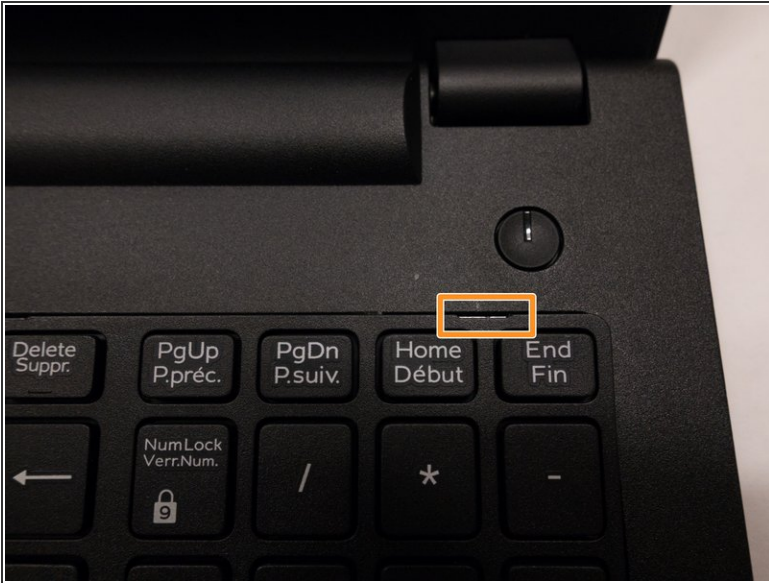
- Using a #0 Phillips screwdriver, remove the 2.0mm screw beside the black pull tab on the hard drive to the bottom left of the device.

Step 6



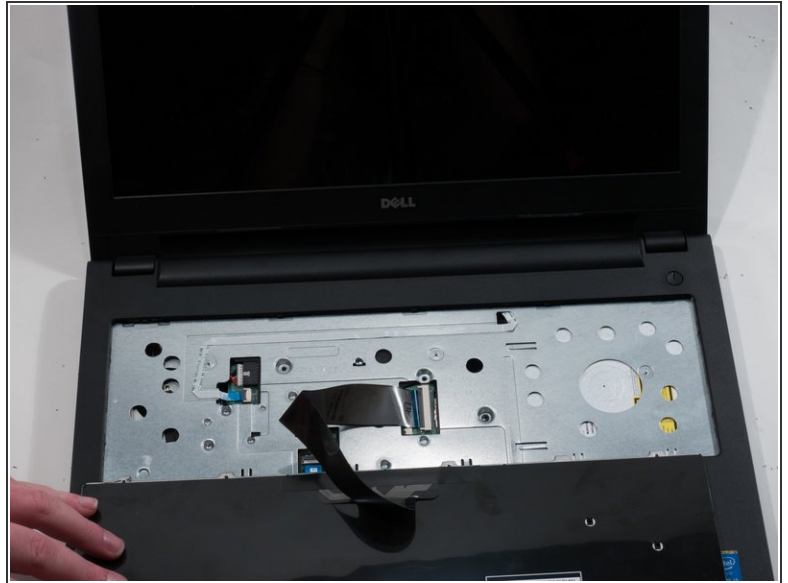
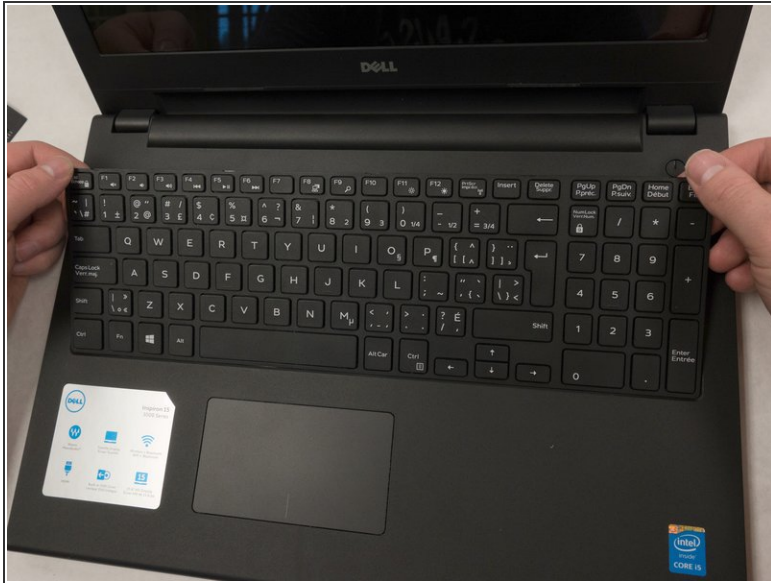
- Pull the black tab up and to the left to completely remove the hard drive.
- Sit the hard drive to the side once it is out.

Step 7



- Turn the device over and open it.
- You will see 5 notches at the top of the keyboard.
- Stick the end of the metal spudger between each of these notches to pry the keyboard up. Once you hear a pop sound, stop and move onto the next notch.

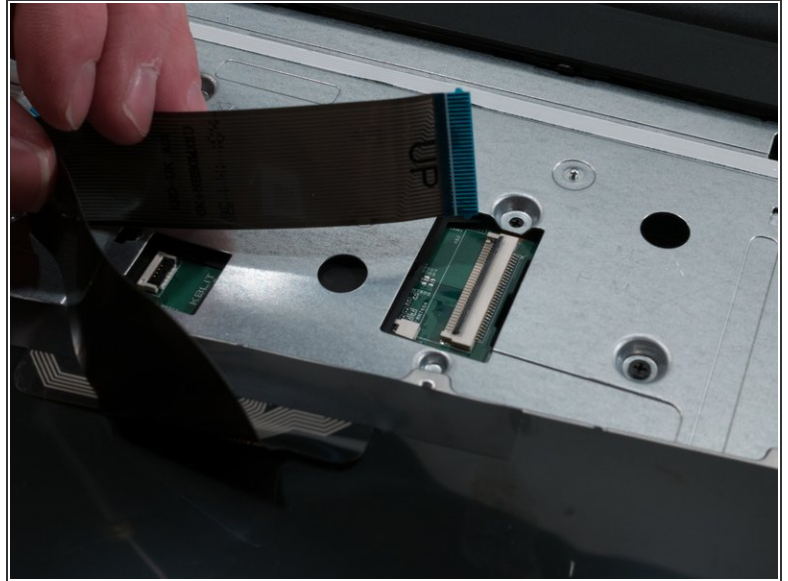
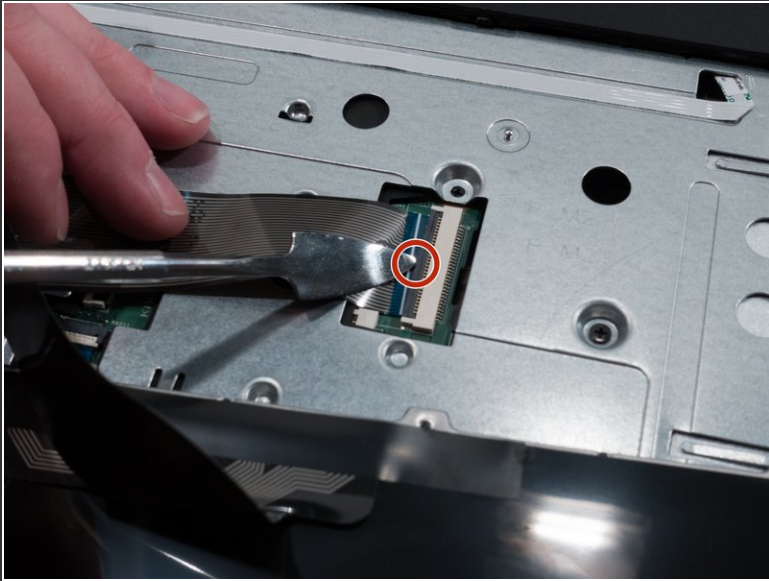
Step 8



- Once all five notches at the top of the keyboard are loosened, begin pulling it up from the top.

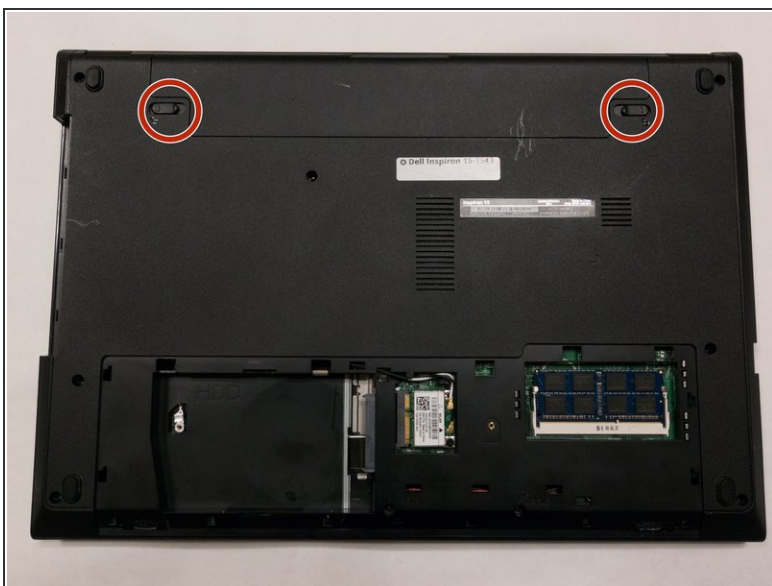
⚠ Pull the keyboard up slowly so you don't tear the ribbon cable out or damage it.

Step 9



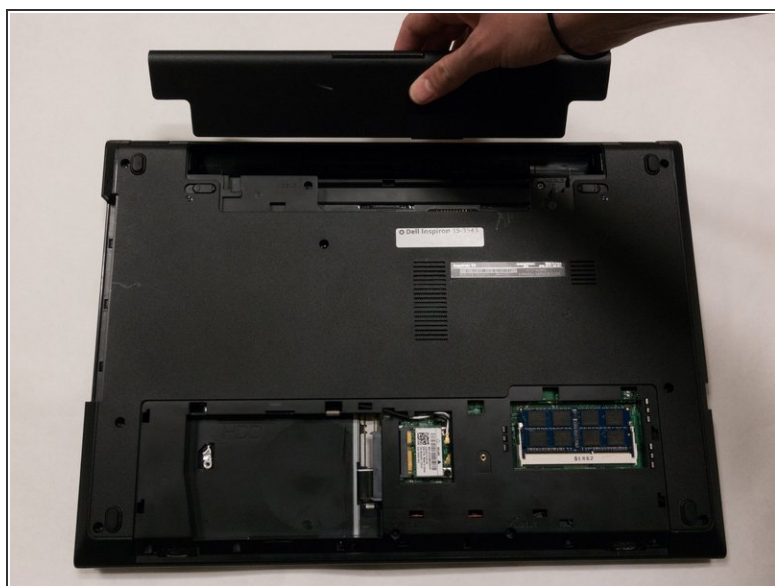
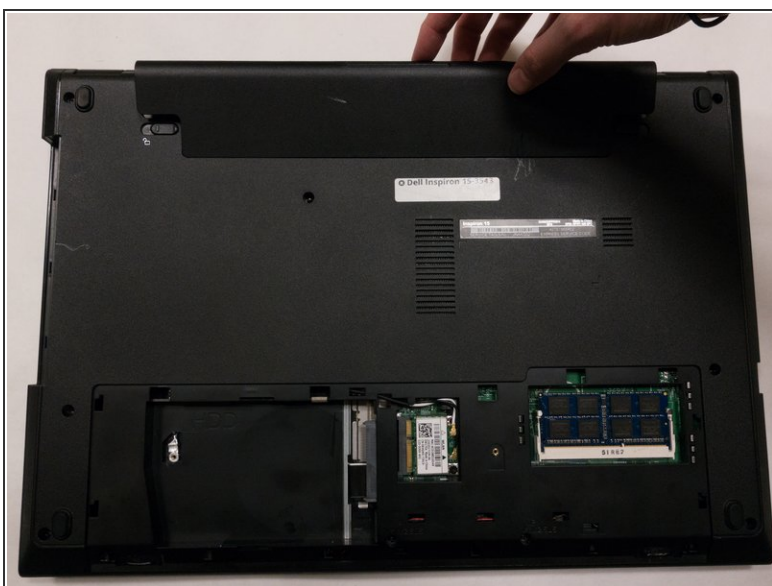
- To remove the ribbon cable, use the metal spudger tool to pop the ribbon cable lock up.
- After popping up the ribbon cable lock, you can pull the ribbon cable out and sit the keyboard to the side.

Step 10



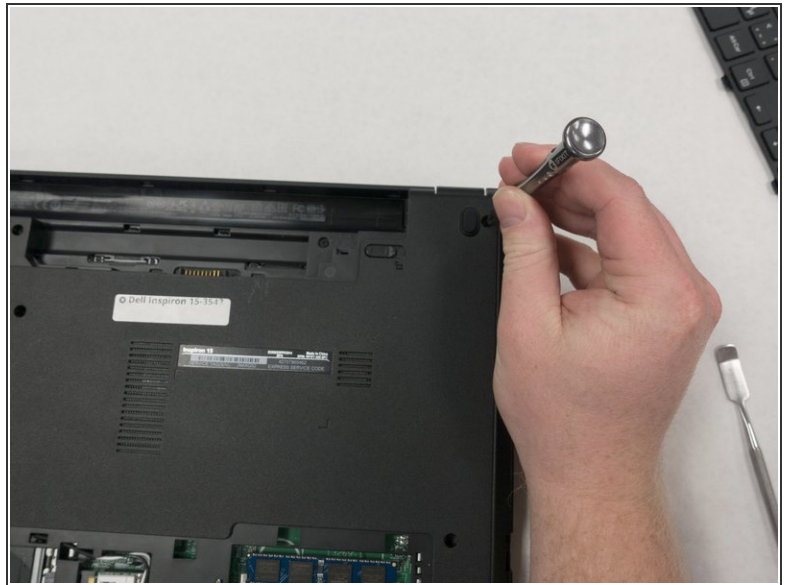
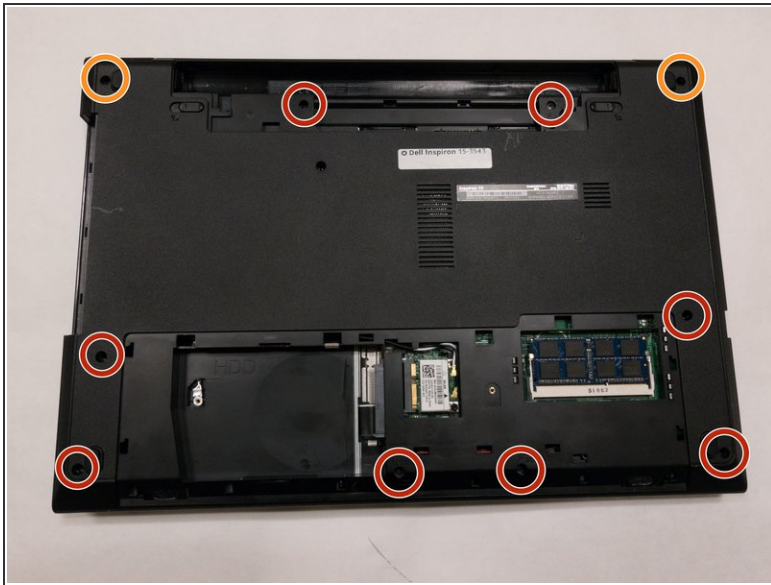
- Flip the device over so the bottom is facing up.
- Push the two battery locks outwards.

Step 11



- Pull the top of the battery up and out.
- Sit the battery to the side once it is out.

Step 12



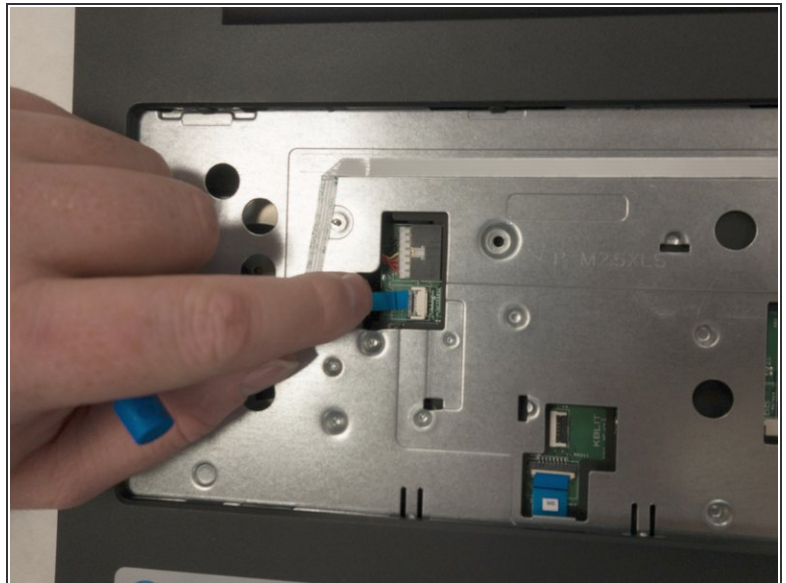
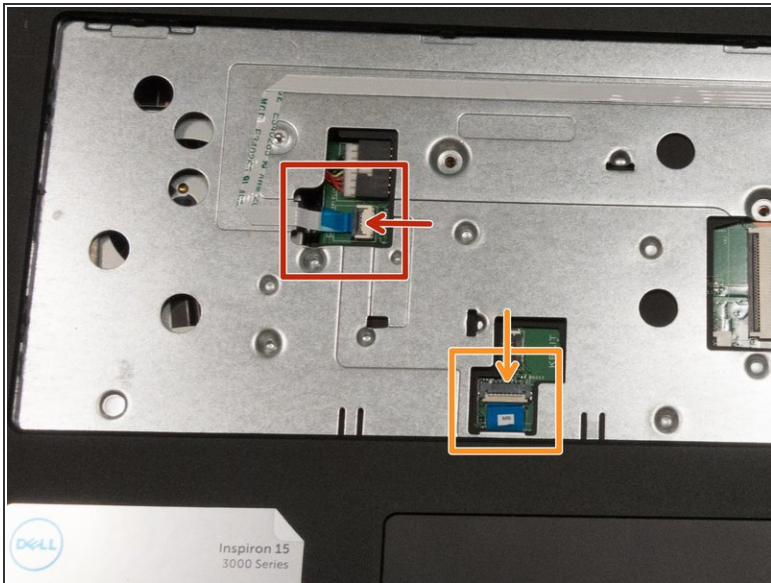
- Remove the following ten screws with a #0 Phillips screwdriver:
 - Two 8.0mm screws.
 - Eight 4.0mm screws.

Step 13



- Turn the device over and open it.
- Using a #0 Phillips screwdriver, remove the three 4.0mm screws on the front where the keyboard used to be.

Step 14



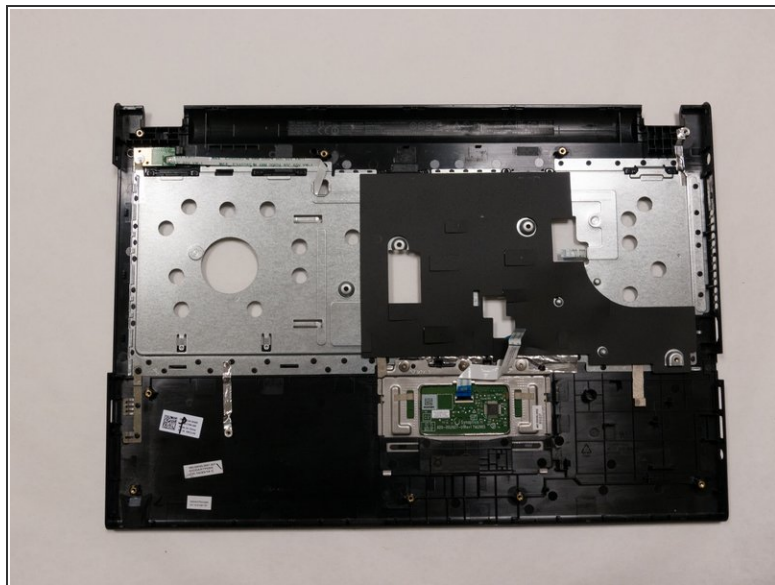
- On the front of the device, there will be two ribbon cables. Remove them using the following directions:
- Pull the black cable ribbon lock up and pull the blue ribbon out using the tab.
- Pull the white cable ribbon lock up and pull the blue ribbon out using the tab .

Step 15



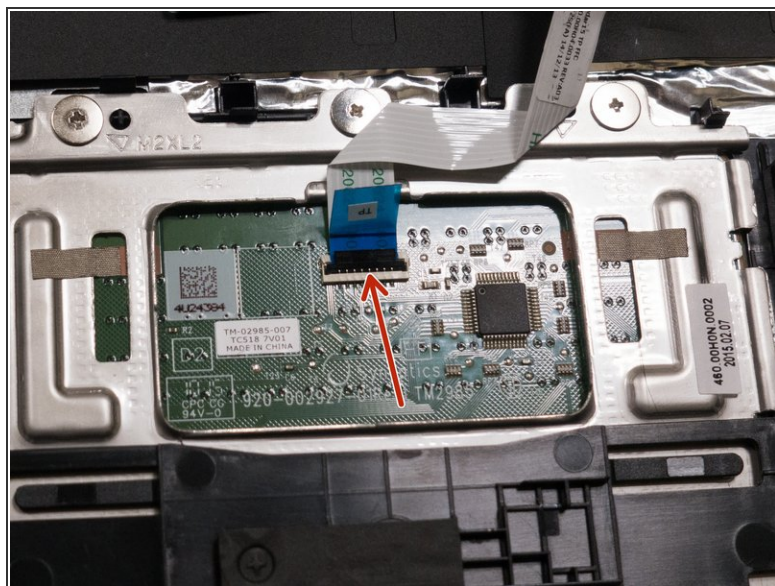
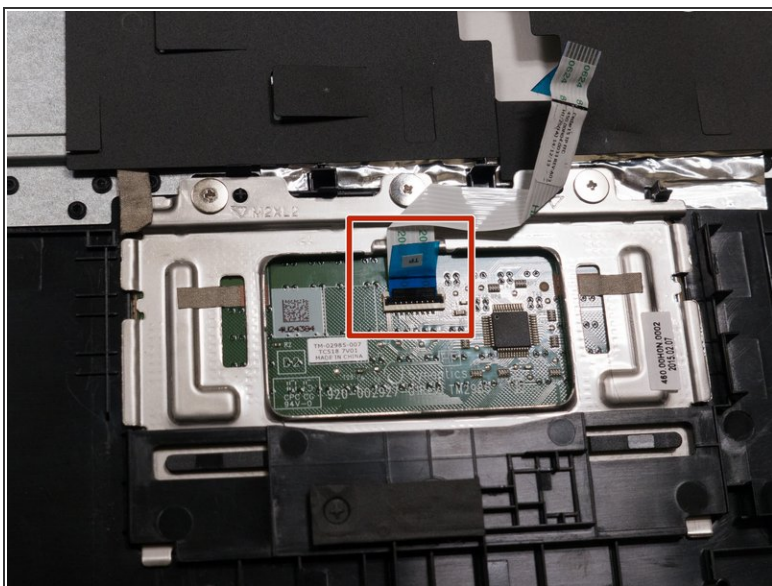
- Using the one or two opening tools, pry the bottom of the top plate off starting underneath the headphone jack.

Step 16



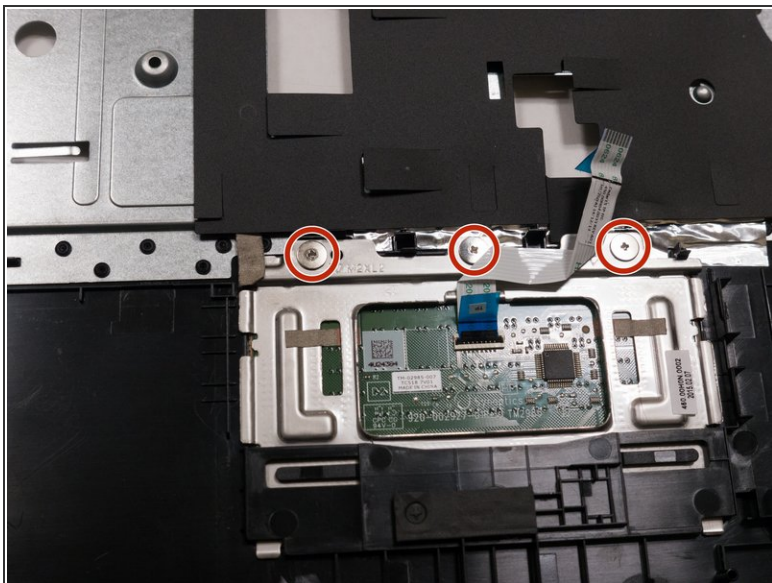
- Continue going around the device and prying it open until the top panel is off.

Step 17



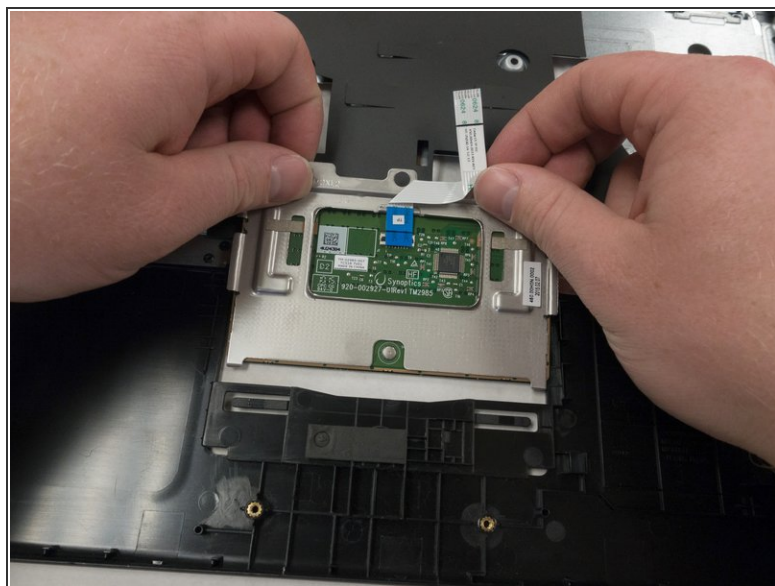
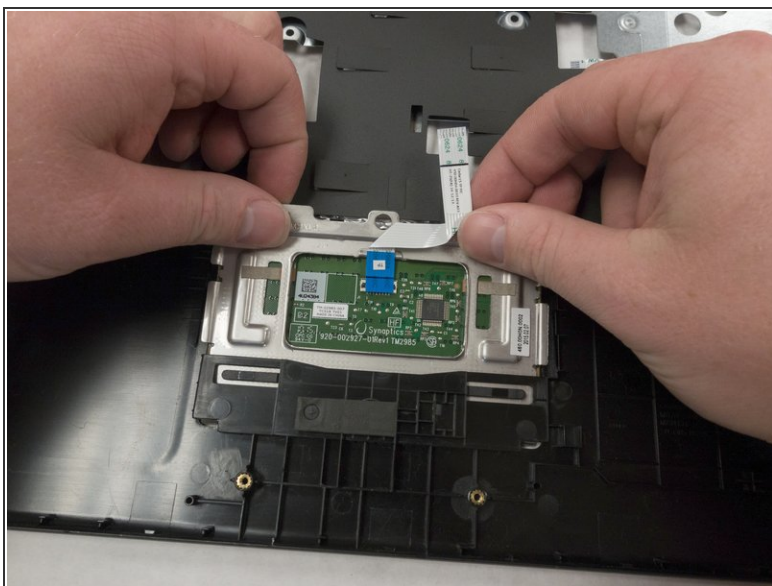
- On the inside of the top panel, pull the black ribbon cable lock up and pull the ribbon cable out using the tab.

Step 18



- Using a #0 Phillips screwdriver, remove the three 1.0mm screws.

Step 19



- Pull the metal plate up and out from the top.

To reassemble your device, follow these instructions in reverse order.