



Dell Inspiron 15-3558 Hard Drive Replacement

This guide teaches you how to replace the hard drive in a Dell Inspiron 15-3558 laptop.

Written By: Joseph Sctbunio





TOOLS:

- [iFixit Opening Tools](#) (1)
- [Phillips #1 Screwdriver](#) (1)



PARTS:

- [1 TB SSD / Upgrade Bundle](#) (1)
- [250 GB SSD / Upgrade Bundle](#) (1)
- [500 GB SSD / Upgrade Bundle](#) (1)
- [2 TB SSD / Upgrade Bundle](#) (1)

Step 1 — Remove battery



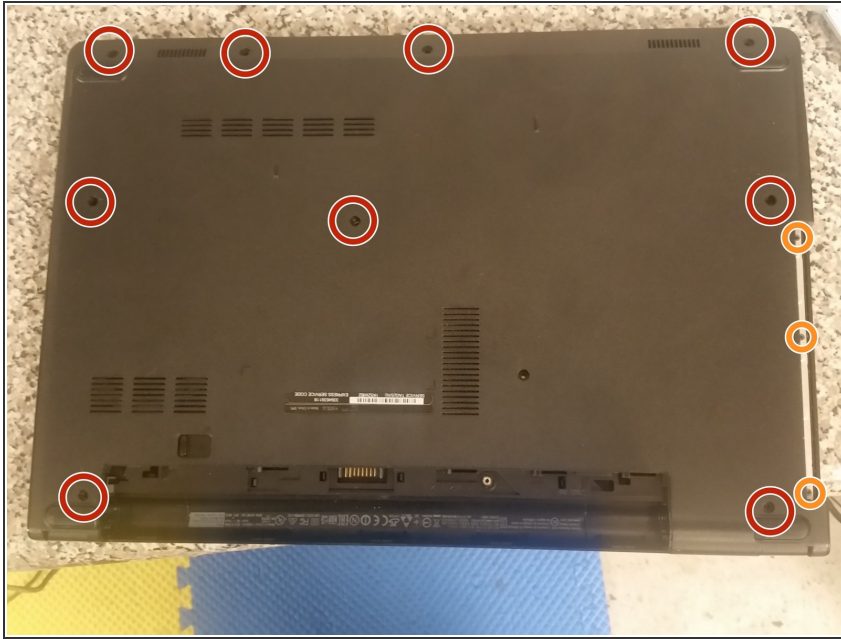
- Flip the laptop over. With the battery side facing you, push the latch to the right.
- Lift the battery. You're done!

Step 2 — Remove disc drive



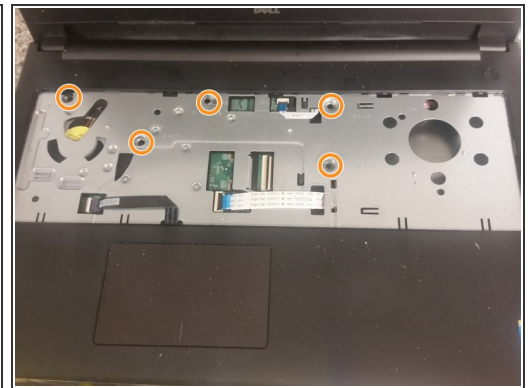
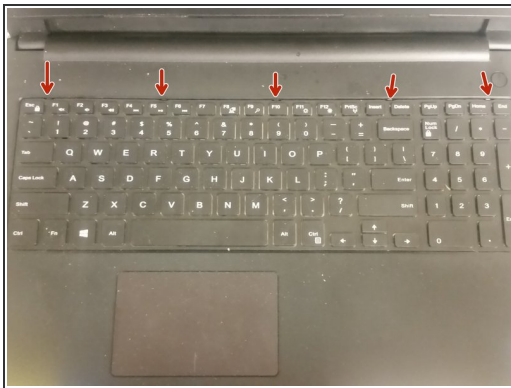
- Remove the single tiny Philips screw securing the disc drive.
- Slide the disc drive out.

Step 3 — Remove bottom screws



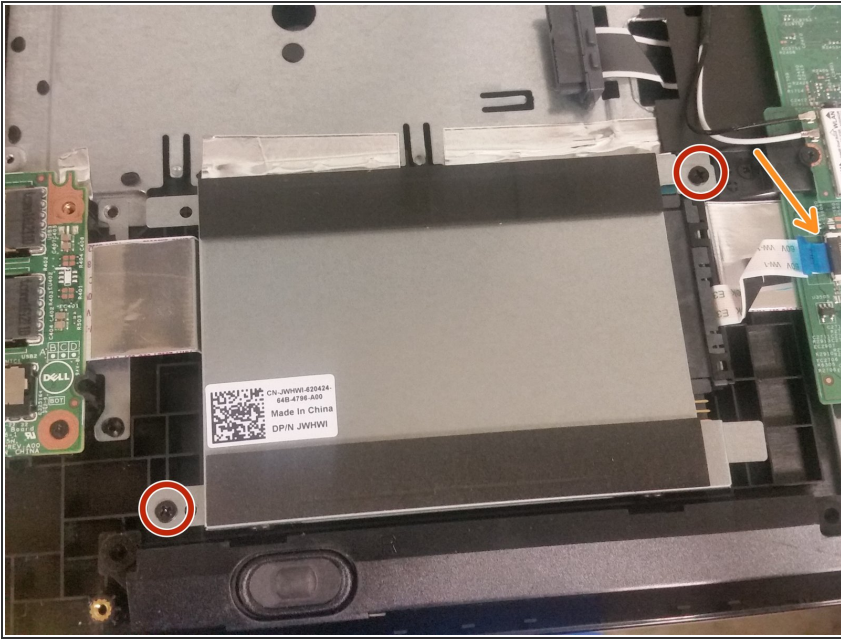
- Remove the nine long Philips screws securing the bottom cover.
- Remove the three small Philips screws securing the bottom cover.

Step 4 — Remove keyboard & palmrest screws



- Flip the laptop right-side-up and open it.
- Use a spudger on each of the five keyboard clips.
- Lift the keyboard slowly, and then remove the cable from the connector.
- Remove the five medium-length Philips screws.

Step 5 — Remove HDD caddy



- Remove the two screws securing the HDD caddy to the palmrest.
- Remove the ZIF cable from the connector.
- Lift the caddy.

Step 6 — Remove HDD



- Remove the four screws securing the HDD to the caddy.
- Remove the SATA-to-ZIF connector from the hard drive.
- You're done!

To reassemble your device, follow these instructions in reverse order.