



Dell Inspiron 15-5552 CD-Drive Replacement

The following guide will give instructions on how to properly replace the CD-Drive on your Dell Inspiron 15-5552.

Written By: Chandler Champion





TOOLS:

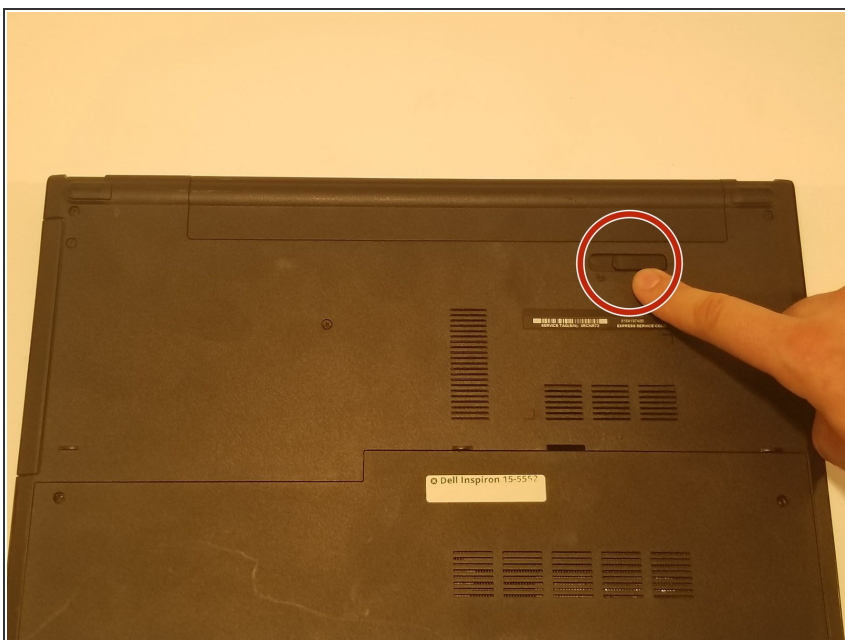
- [Spudger](#) (1)
 - [JIS #0 Screwdriver](#) (1)
-

Step 1 — Battery



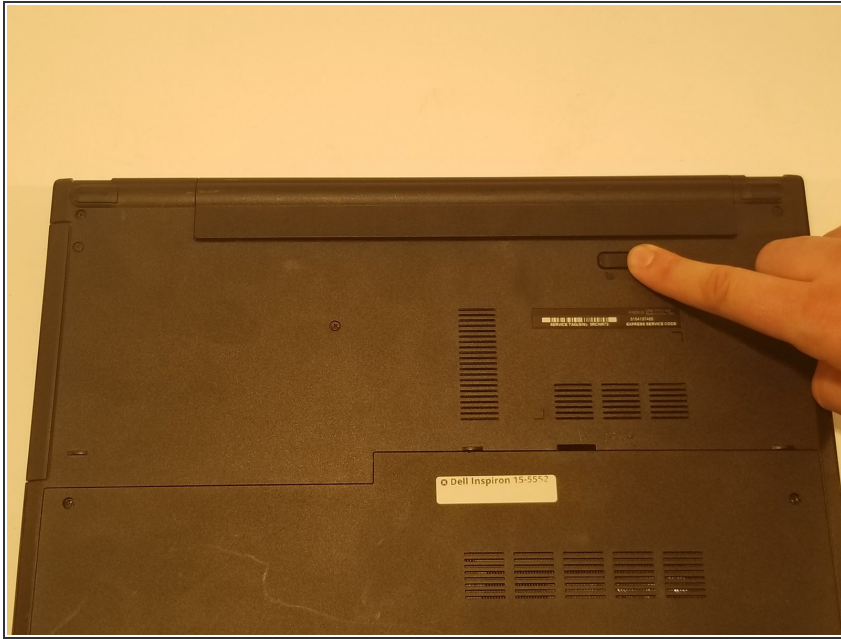
- Make sure the laptop is powered down before you remove the battery.

Step 2



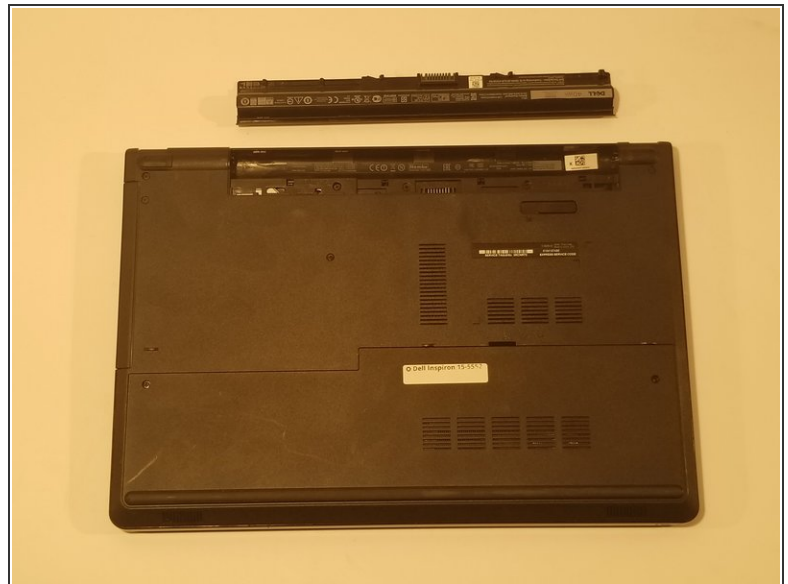
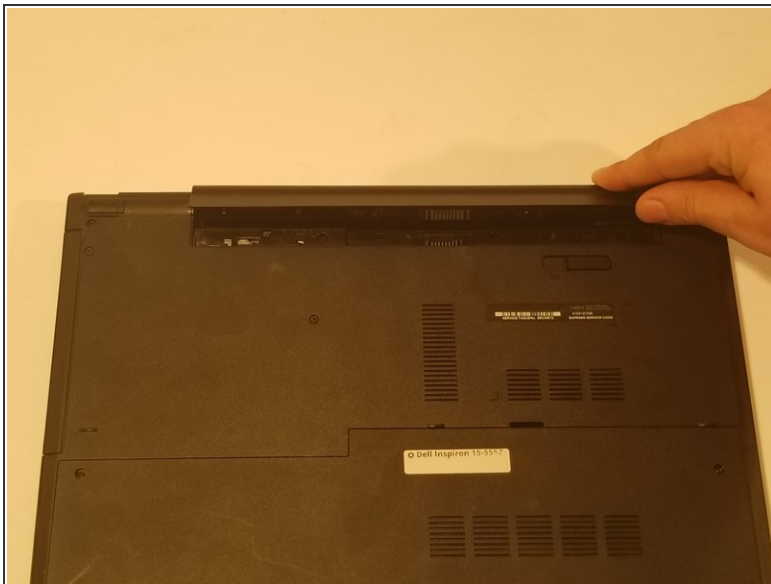
- Locate the battery release switch on the bottom of the laptop.

Step 3



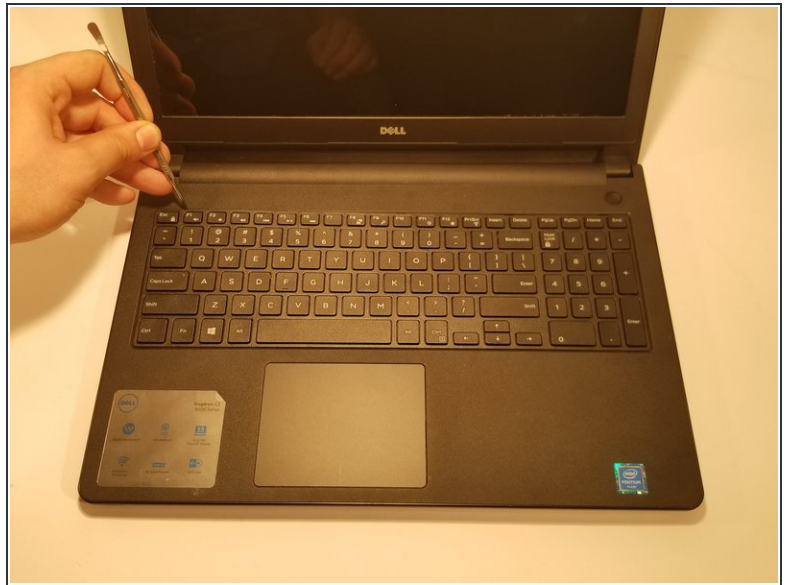
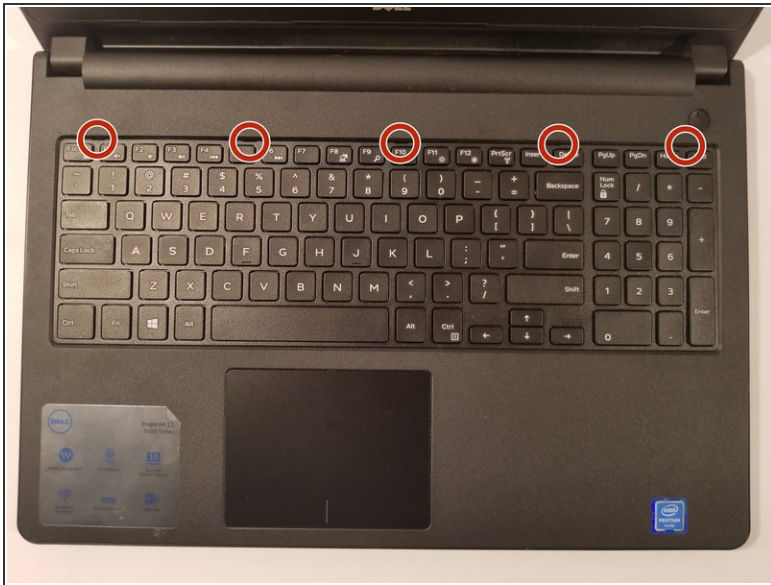
- Slide the battery release switch away from the lock symbol towards the “unlock” position.
- ❗ You can tell that the battery is unlocked once you hear a “click.”

Step 4



- Rotate the battery outward by lifting the bottom lip that pops out.
- Continue rotating the battery towards the top of the laptop until the battery is completely removed.

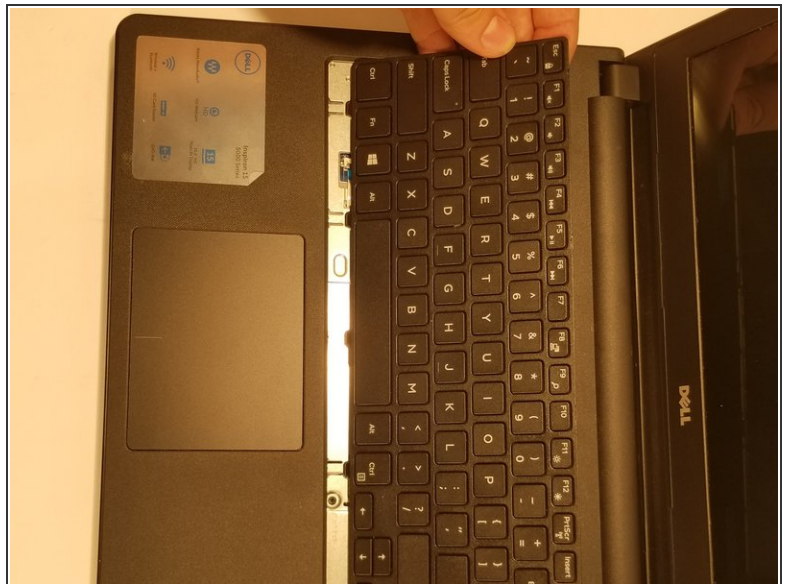
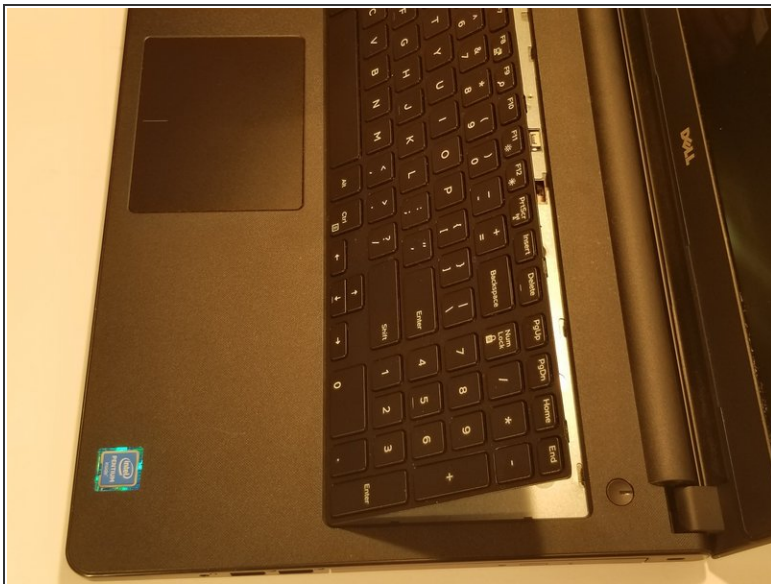
Step 5 — Keyboard



● Keyboard

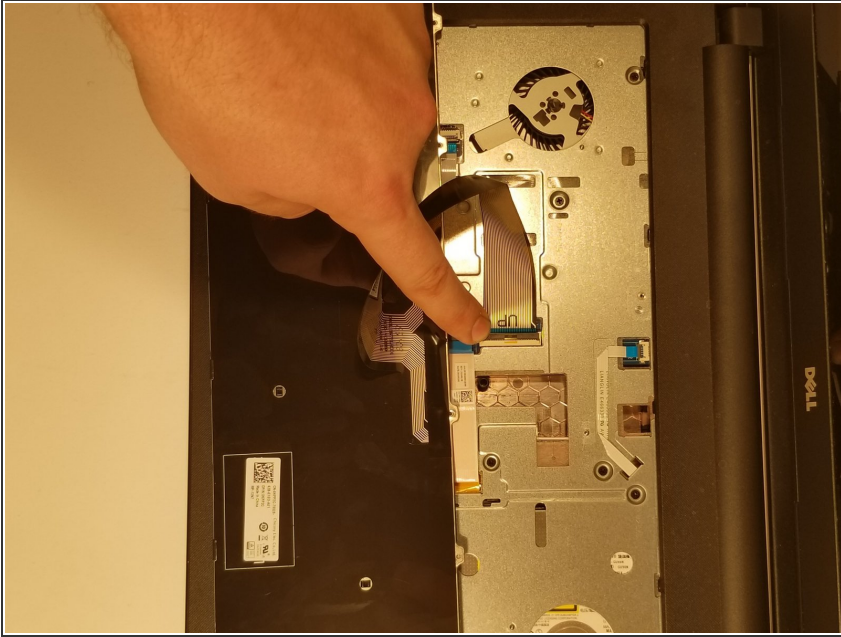
- Insert a spudger next to the 5 plastic indents located at the top of the keyboard and gently pry to release the securing clips.

Step 6



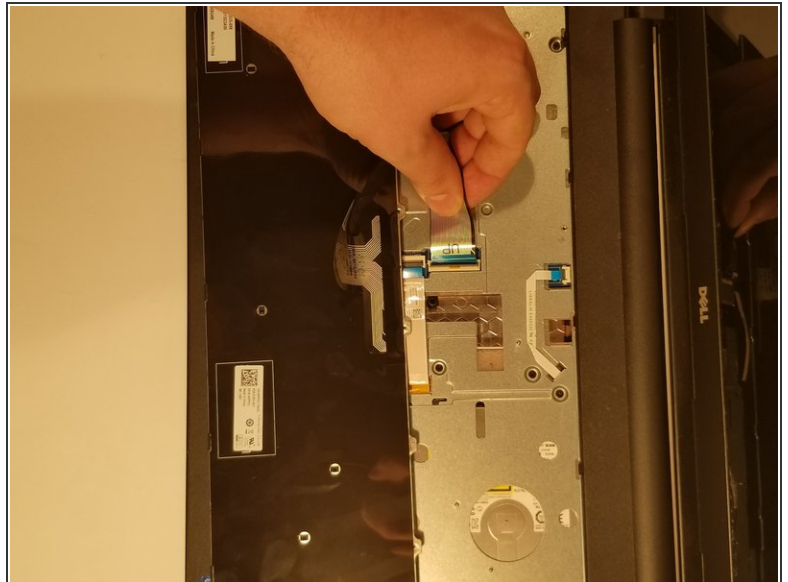
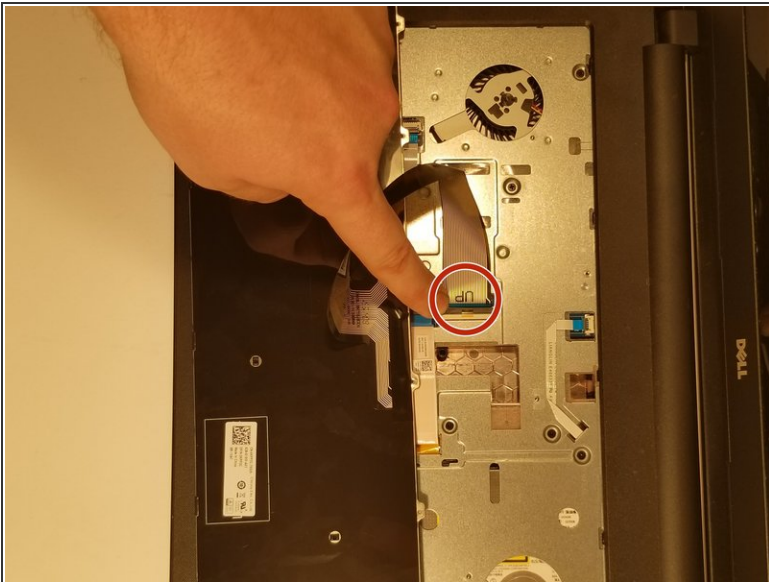
- Lift the keyboard off of the computer. *Be careful not to tear the ribbon that attaches the back of the keyboard to the computer when lifting it.*

Step 7



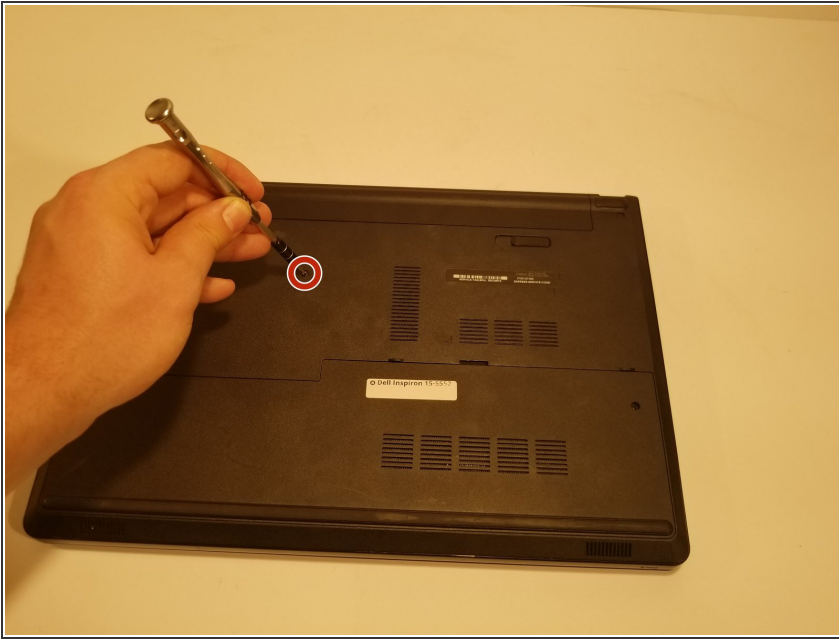
- Flip the keyboard over onto the palm-rest assembly.

Step 8



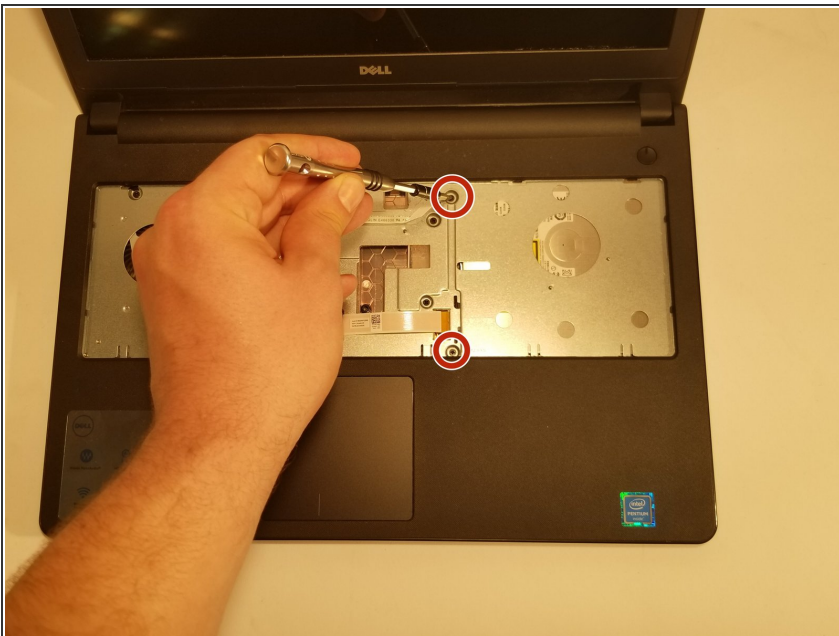
- Flip the black securing bar near the base of the ribbon with a spudger to release the ribbon from the computer.

Step 9 — CD-Drive



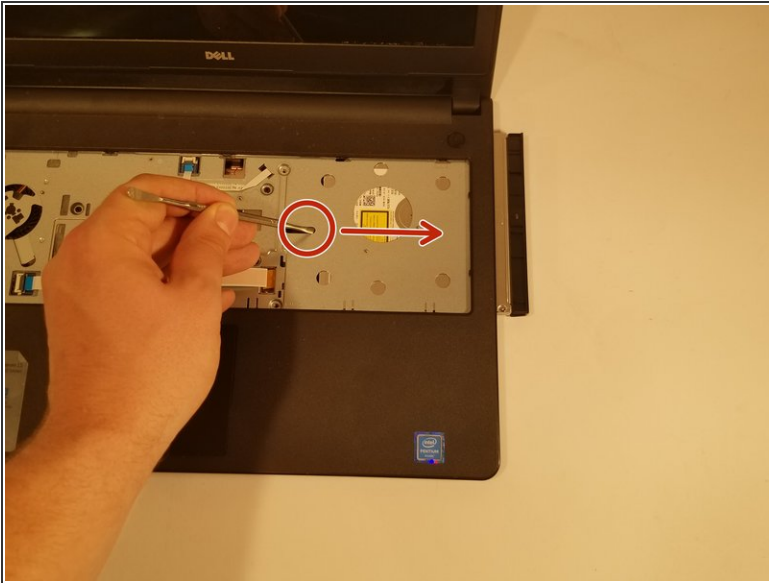
- **CD-Drive**
- Flip the computer over, *screen down* and unscrew the 1 screw in the middle located below the battery with a J0 bit tipped screwdriver.

Step 10



- Next using the J0 bit tipped screwdriver unscrew the 2 remaining screws shown in the picture.

Step 11



- After all 3 screws are removed take a spudger and pry the CD-Drive out of the computer.

To reassemble your device, follow these instructions in reverse order.