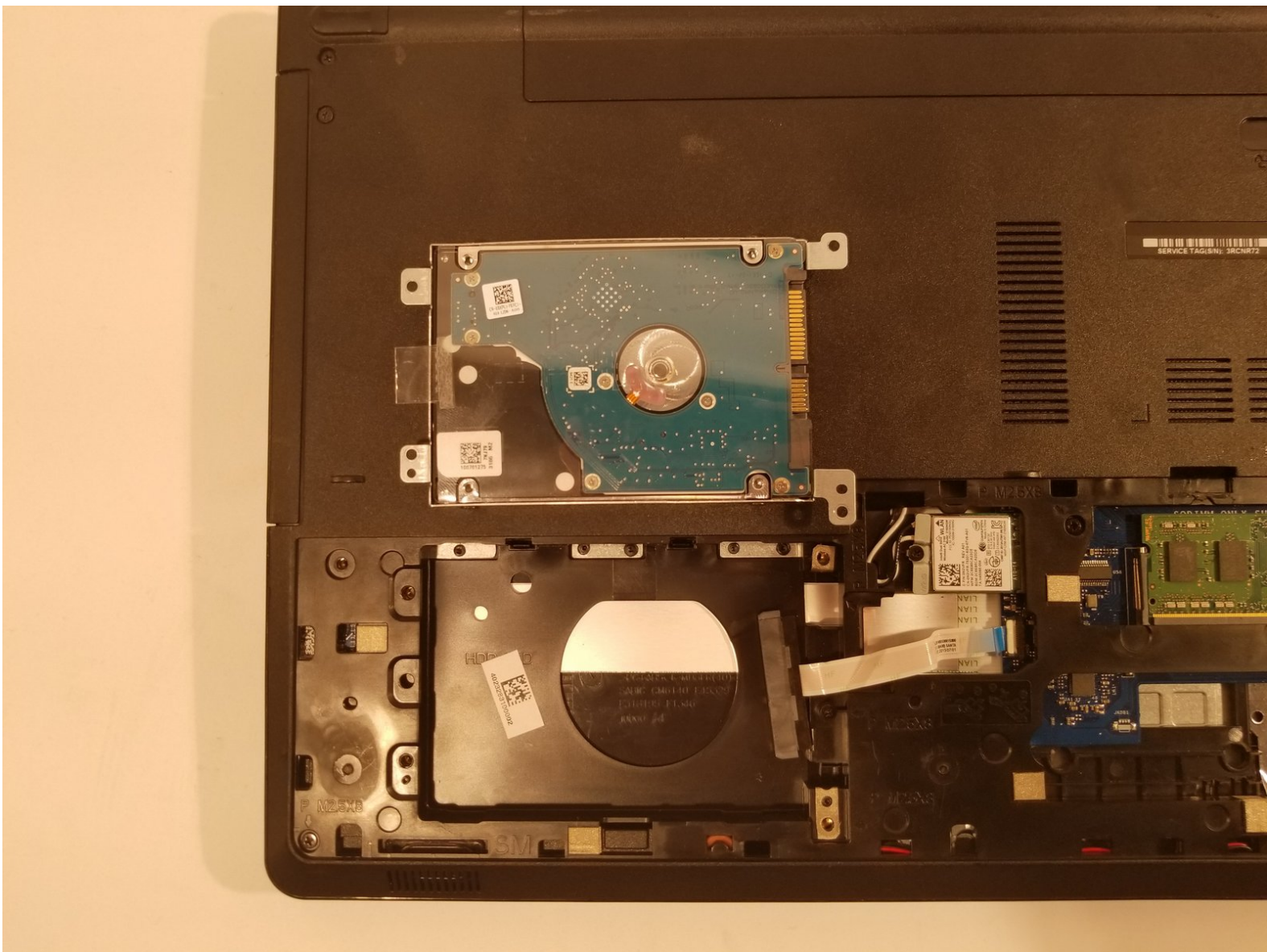




Dell Inspiron 15-5552 Hard Drive Replacement

The following guide will give instructions on how to properly replace the harddrive on your Dell Inspiron 15-5552.

Written By: Mitchell Roberts



INTRODUCTION

The following guide will give instructions on how to properly replace the hard drive on your Dell Inspiron 15-5552.



TOOLS:

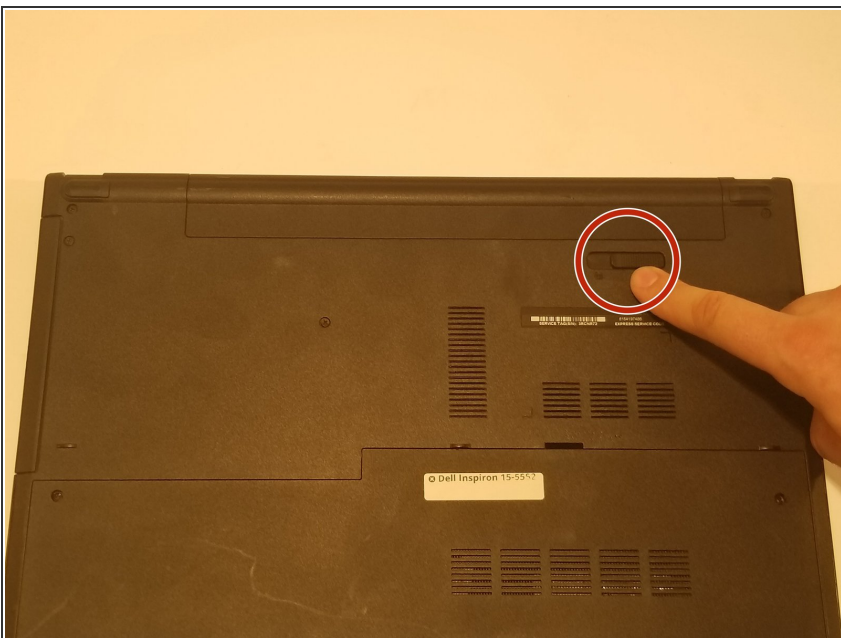
- [JIS Driver Set](#) (1)
 - [Spudger](#) (1)
-

Step 1 — Battery



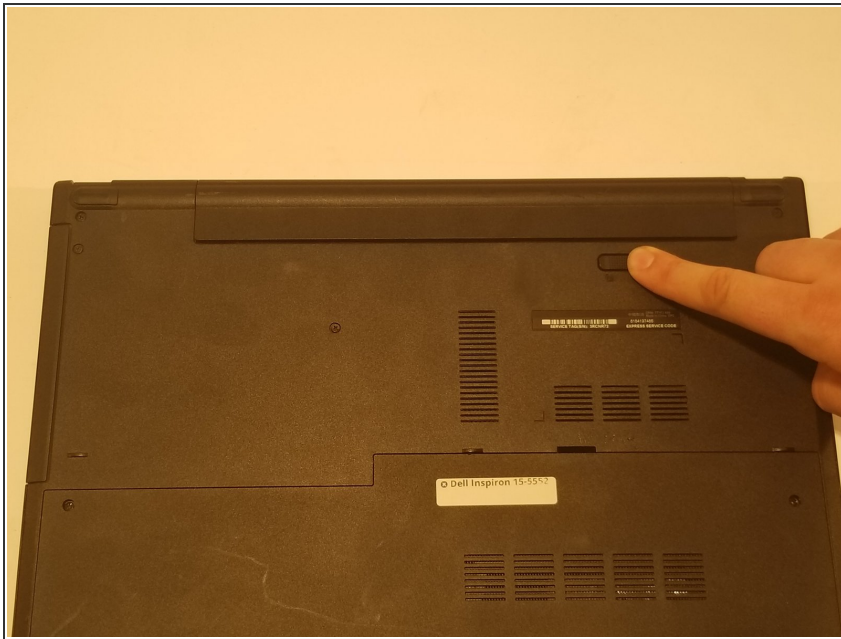
- Make sure the laptop is powered down before you remove the battery.

Step 2



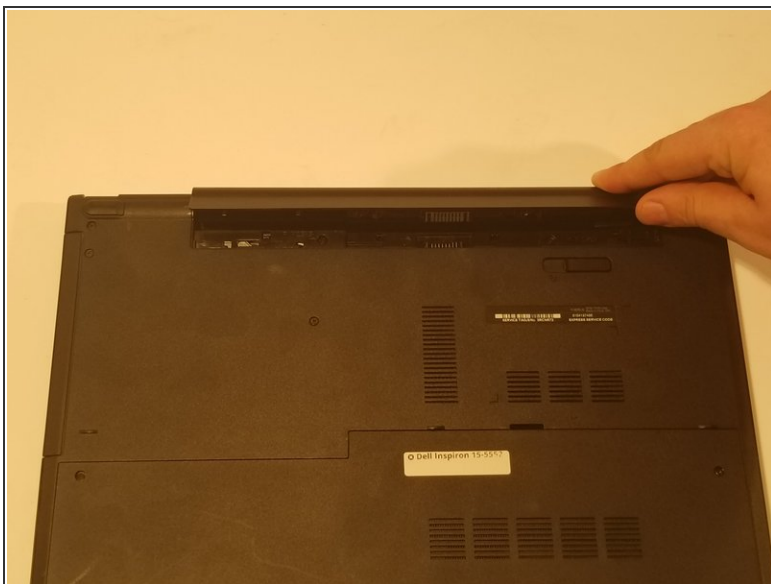
- Locate the battery release switch on the bottom of the laptop.

Step 3



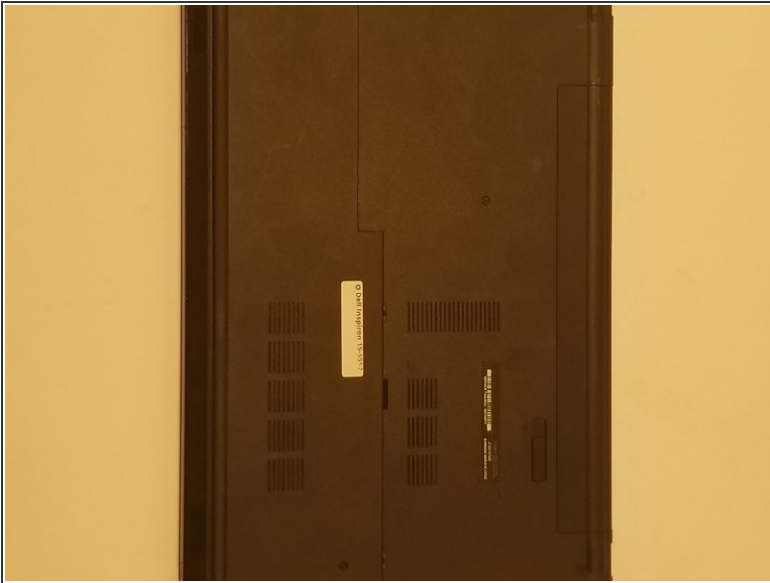
- Slide the battery release switch away from the lock symbol towards the “unlock” position.
- ❗ You can tell that the battery is unlocked once you hear a “click.”

Step 4



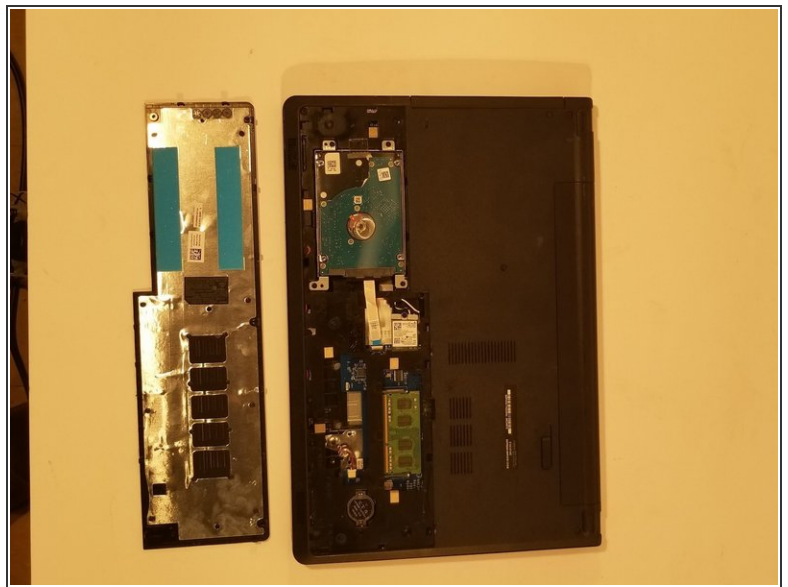
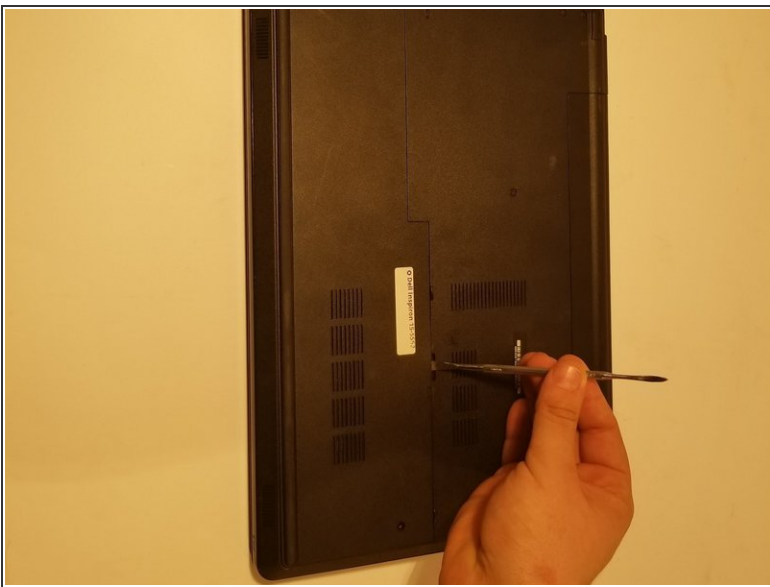
- Rotate the battery outward by lifting the bottom lip that pops out.
- Continue rotating the battery towards the top of the laptop until the battery is completely removed.

Step 5 — Hard Drive



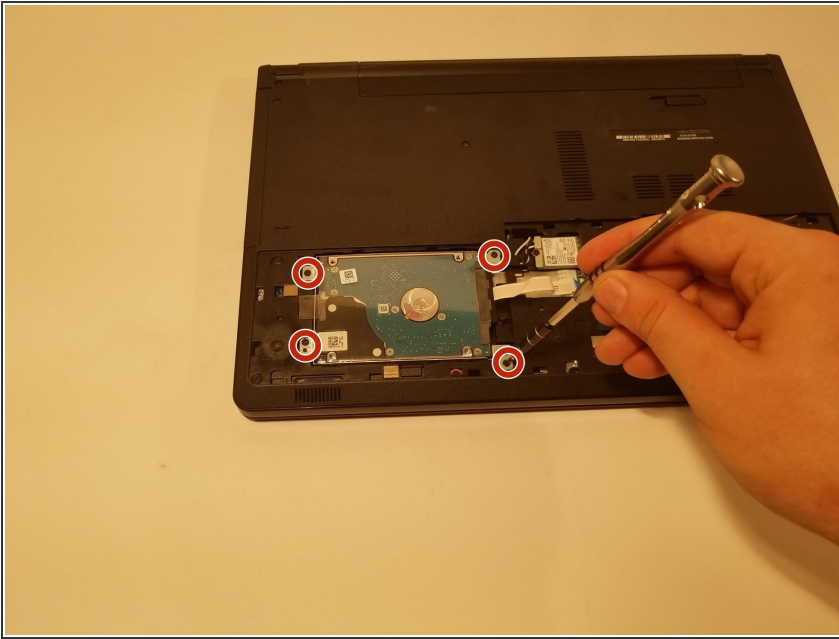
- Use a JIS #0 screwdriver to unscrew the two 6 mm screws from the back panel.
- ⚠ Make sure your device is powered down and unplugged before beginning the replacement.

Step 6



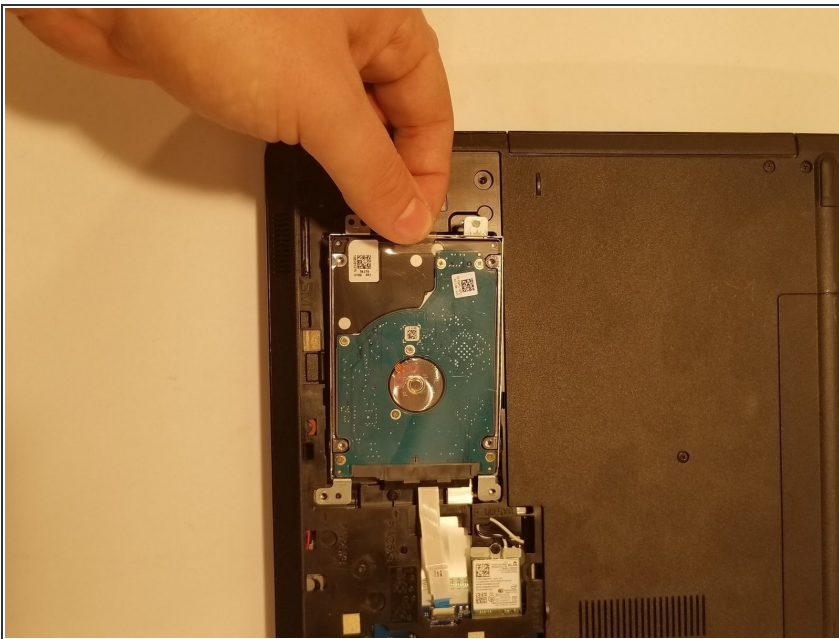
- Using a spudger, lightly lift the RAM cover up and at an angle, away from the computer.

Step 7



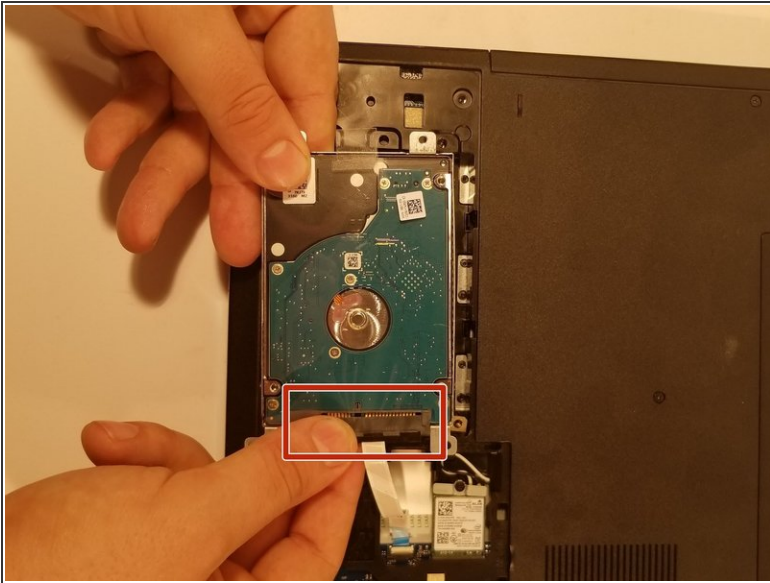
- Remove the four 6 mm JIS #0 screws from the hard drive.

Step 8



- Lift hard drive out of the computer slightly.
- ⚠ Be careful not to tear the ribbon that attaches the hard drive to the computer when lifting it.

Step 9



- Using two fingers, grab the black connector on the ribbon, and pull until detached.

To reassemble your device, follow these instructions in reverse order.