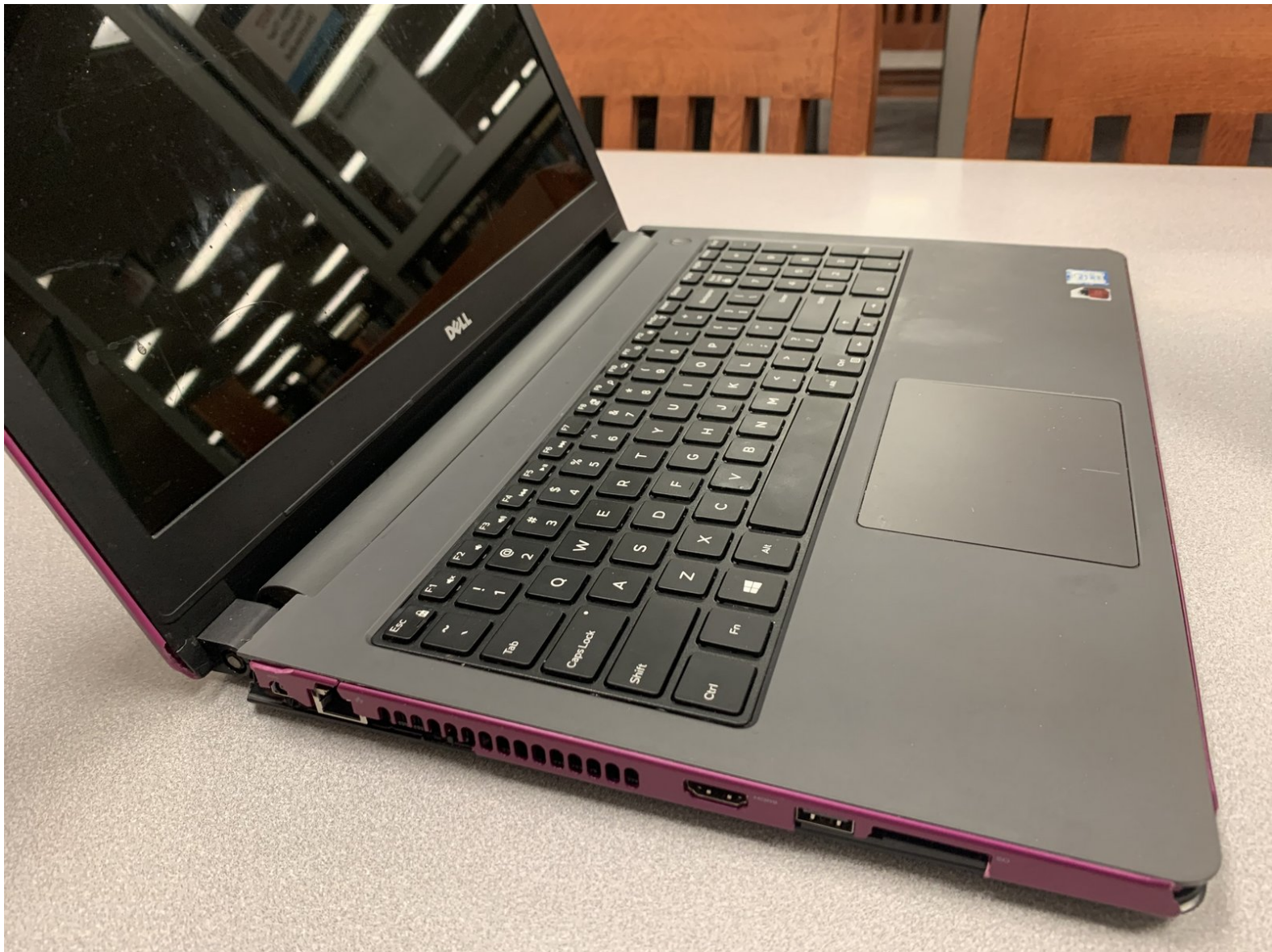




# Dell Inspiron 15-5558 Palm-Rest Assembly Replacement

This guide will show you step by step how to replace the palm-rest assembly on a Dell Inspiron 15-5558 laptop.

Written By: KES Company



This document was generated on 2020-04-06 06:33:52 AM (MST).

## INTRODUCTION

This iFixit guide covers the replacement of a the palm-rest assembly from an Inspiron 15-5558 laptop. Please note that screws have been assembled by the manufacturer with blue Loctite to prevent the backing out of screws over time. This means that screws may initially be difficult to start to turn, but should not cause additional issues .

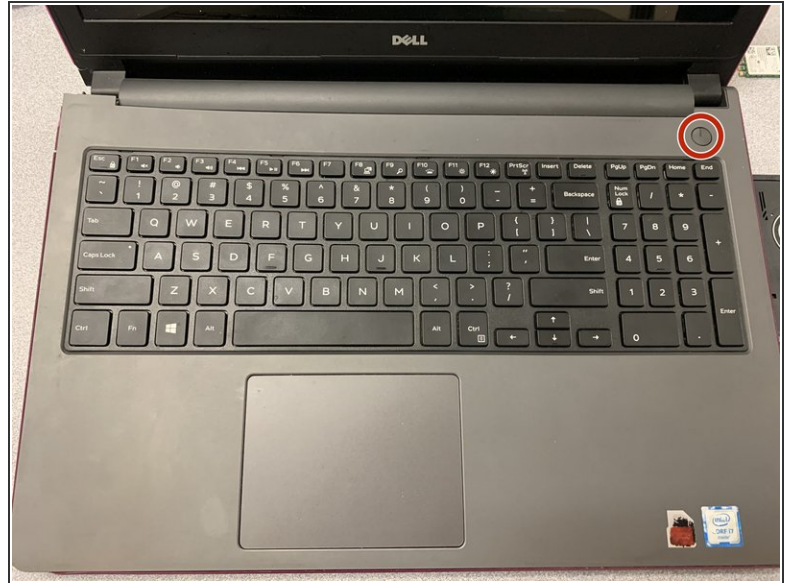
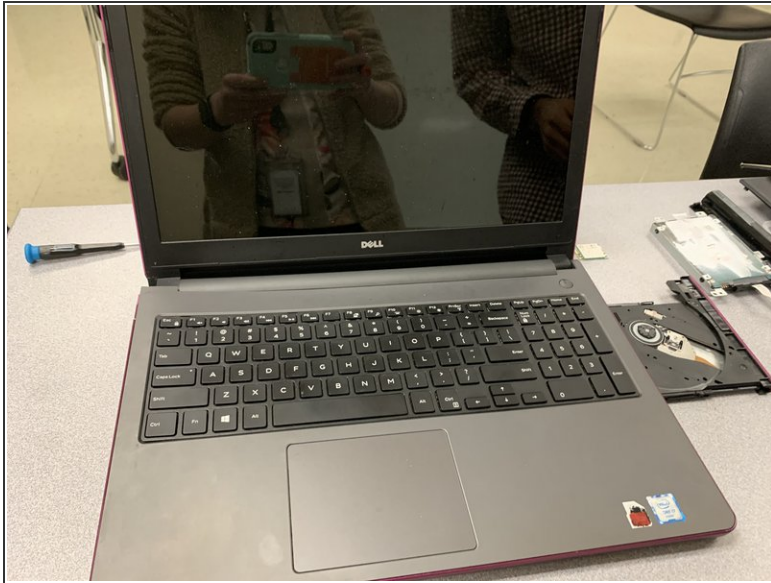
Also while working with sensitive electronics, it is important not to introduce additional debris to the inside of a laptop and to occasionally ground yourself by touching a metal object to prevent static discharge.



### TOOLS:

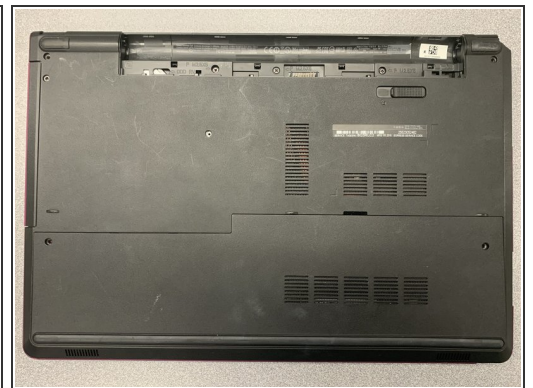
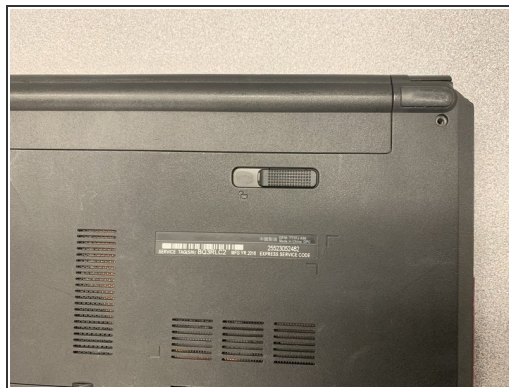
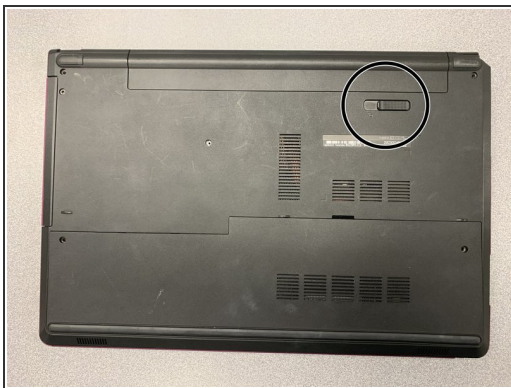
- [Phillips #00 Screwdriver](#) (1)
  - [Flathead 3/32" or 2.5 mm Screwdriver](#) (1)
  - [Small Chain Nose Pliers](#) (1)
-

## Step 1 — Eject CD Tray and Turn Off Laptop



- Eject the CD tray while the laptop is on.
- Turn off the laptop using the power button.

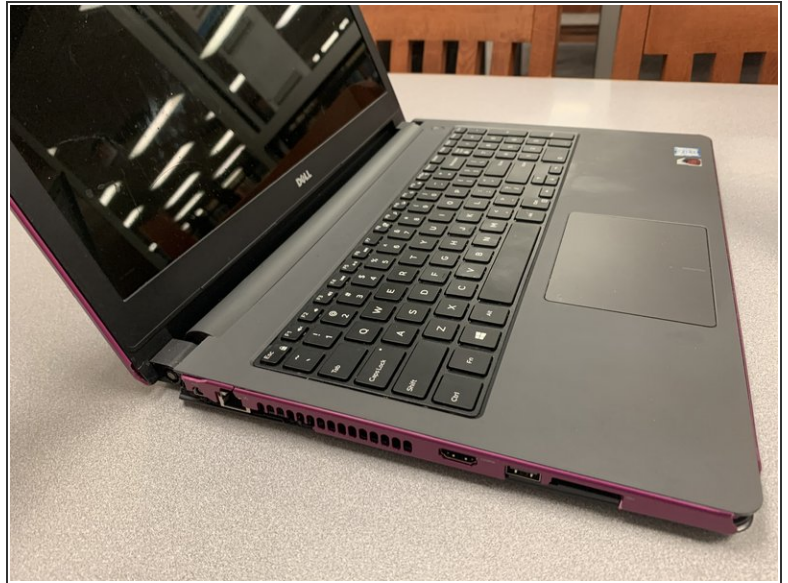
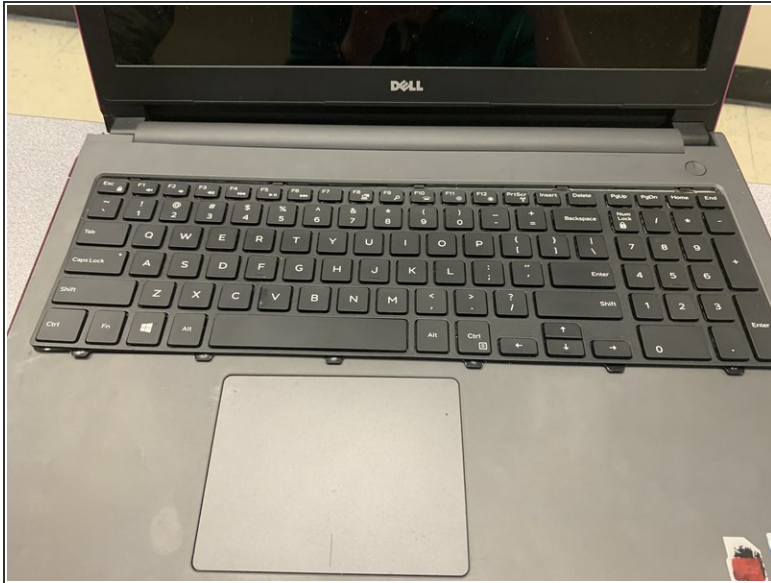
## Step 2 — Battery Removal



- ⚠ Make sure that the laptop is turned off before proceeding.
- Move the unlocking switch to the left to eject the battery.



## Step 3 — Keyboard Removal



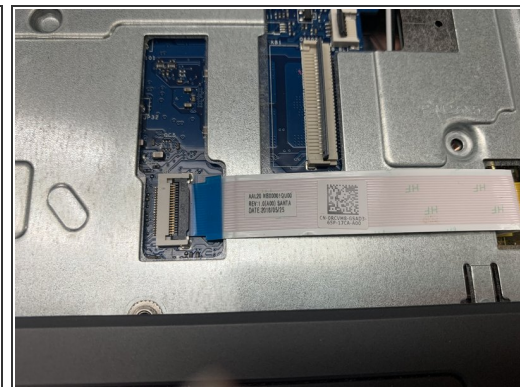
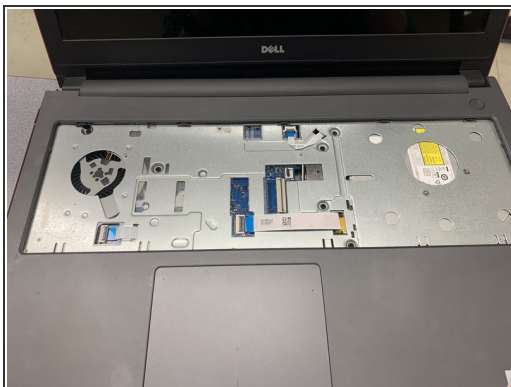
- Turn the laptop over and open up the front screen to show the keyboard.
- Use a Philips flathead near the top, center of the keyboard to begin popping out the keyboard.
- ⓘ You may also use your hands once you begin the process.
- Remove the bottom tabs of the keyboard by pulling the keyboard up towards the screen.

## Step 4 — Keyboard Disconnection



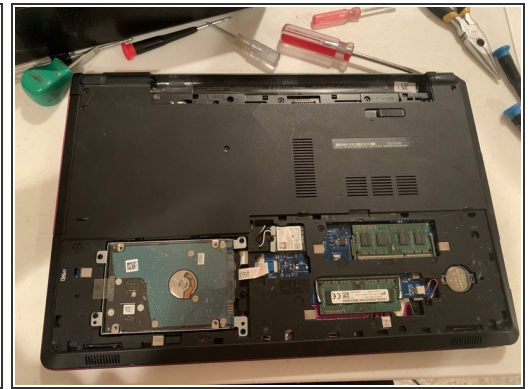
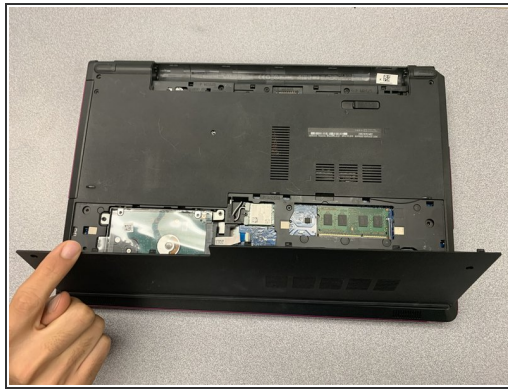
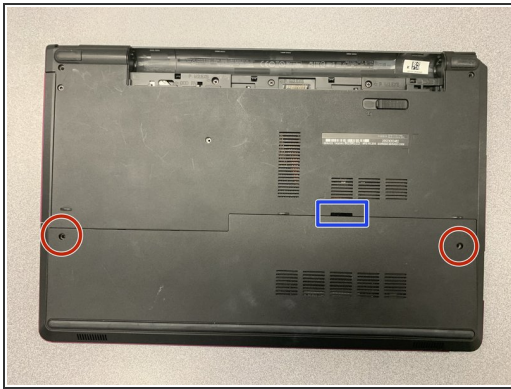
- Carefully lift up the keyboard
  - There should be cables hooked to underside of the keyboard.
- Remove tape, if there is tape, and disconnect all flaps and cables by lifting up.

## Step 5 — Disconnect Cables



- Remove all connected cables by pulling the black tapes up to unlock each cable.
- ① To reconnect the cables, align and place the end of a cable into the slot of the black tab. Then push the black tab down to lock the cable in place.

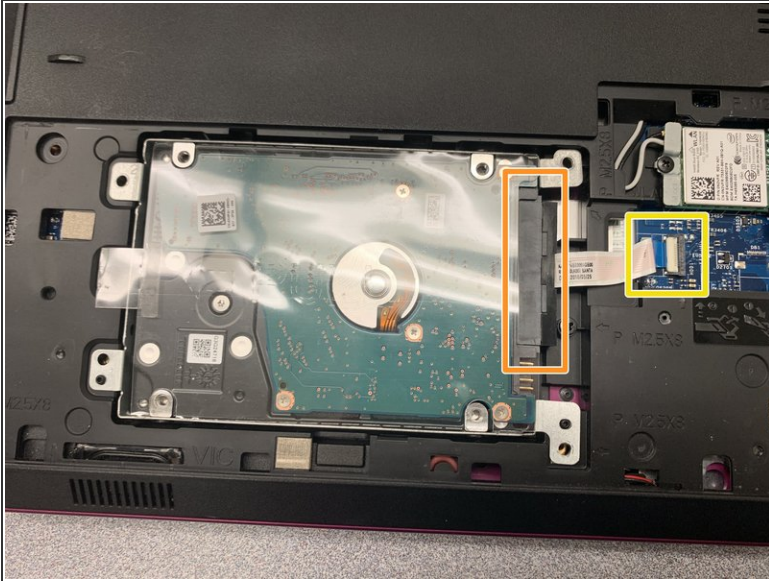
## Step 6 — Base Cover Removal



- Use Phillips #00 screwdriver to remove screws securing the base cover.
- Use the 3/32 Flathead screwdriver to gently pry off the base cover around the top , slotted section .

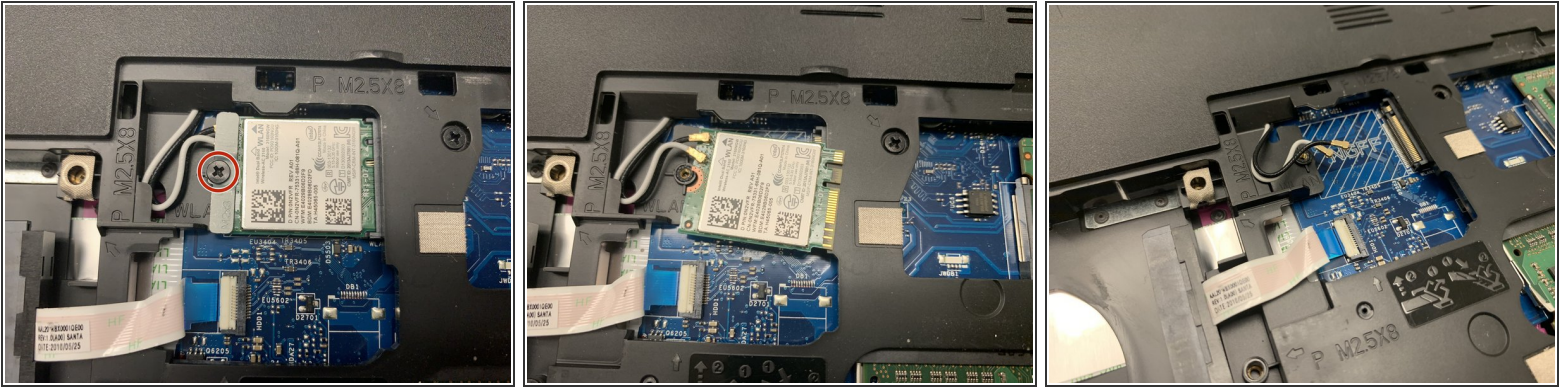


## Step 7 — Hard Drive Removal



- Remove screws securing the hard drive to the laptop.
- Disconnect the black cable by pulling it away from the hard drive.
- Lift the black latch to unlock the cable.
- Remove the hard drive cable from the lower, blue circuit board
- Remove the hard drive from the laptop.

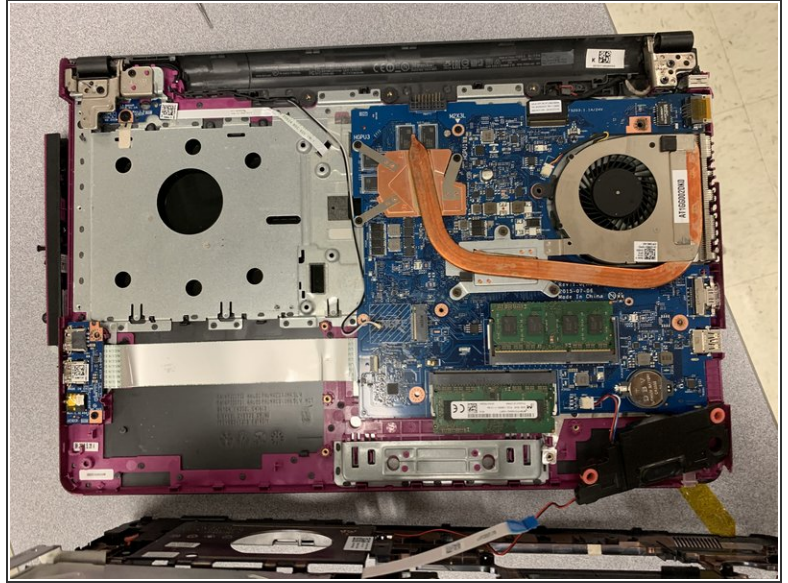
## Step 8 — Wireless Card Removal



- Unscrew the M2x3 screw
  - Lift off wireless card bracket
  - Gently unplug the wireless card by pulling it out to the left
  - Disconnect the black and white antenna cables
- ⚠ Remember when re-assembling this item to plug in the white cable to the lower plug and the black cable to the higher plug.



## Step 9

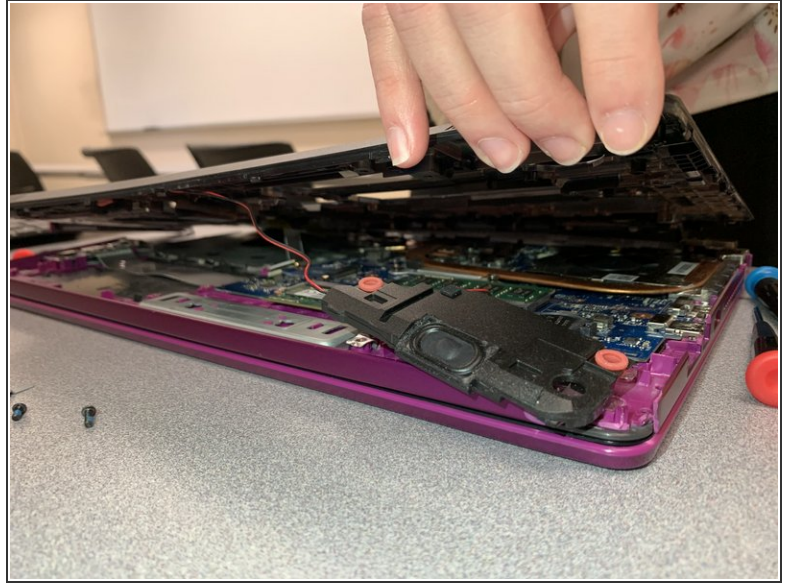


- Use the Philips flathead and your hands to lift up the computer base.

⚠ Bits of plastic tabs may break off.

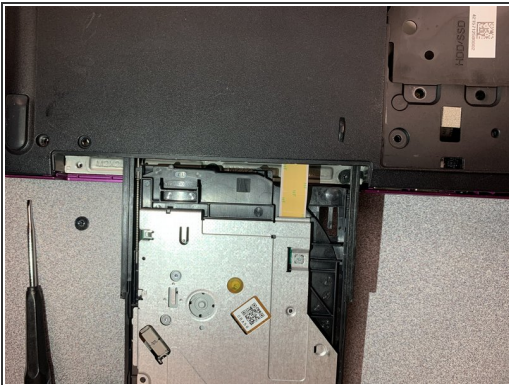
- Be careful to lift up the keyboard around the hinges.

## Step 10 — Remove the Speakers



- The speakers may be removed from the computer base by unattaching from the computer base or disconnecting the cable and leaving the speakers on the computer base.

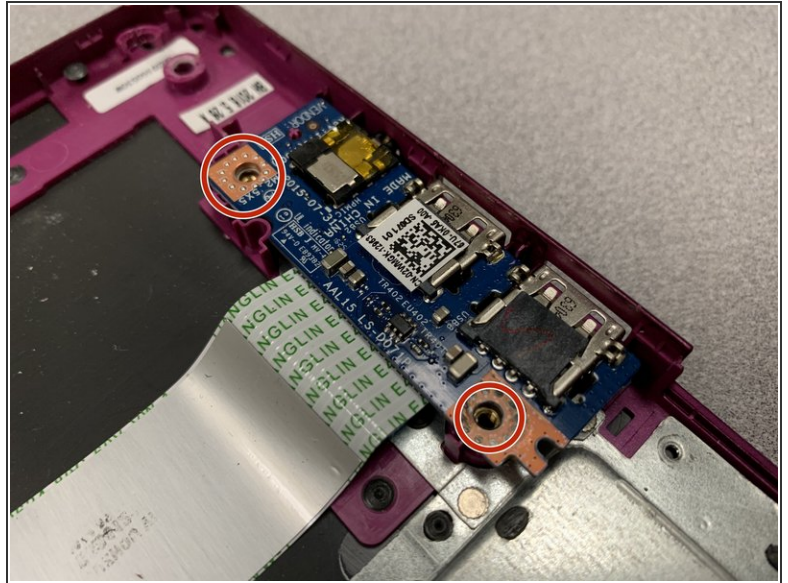
## Step 11 — Remove the Optical Drive Assembly



- Disconnect the optical drive cable that is attached to the innermost layer of computer components.
- While lifting up, unscrew all screws holding the optical drive to the computer base.
- Remove the optical drive assembly



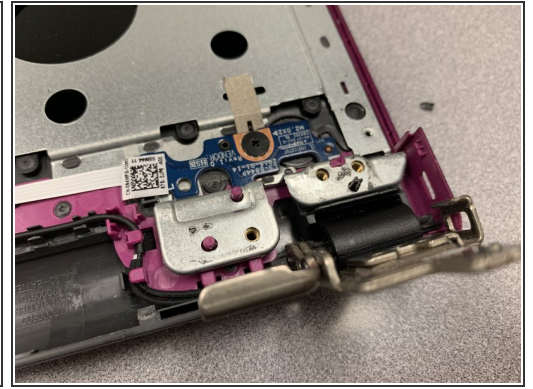
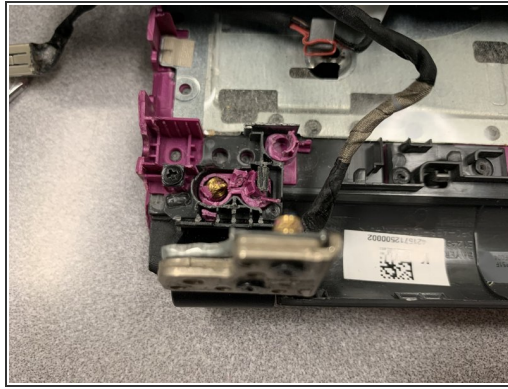
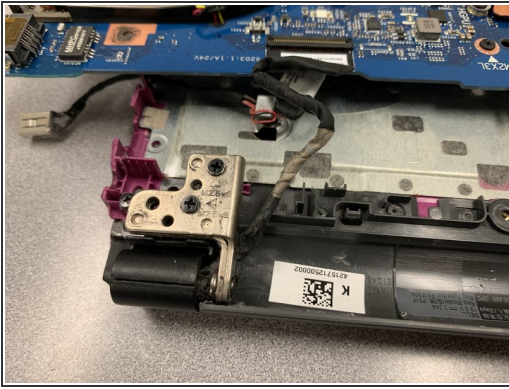
## Step 12 — Remove I/O Board



- Unscrew the two screws securing the I/O Board to the laptop.
- Remove the I/O board

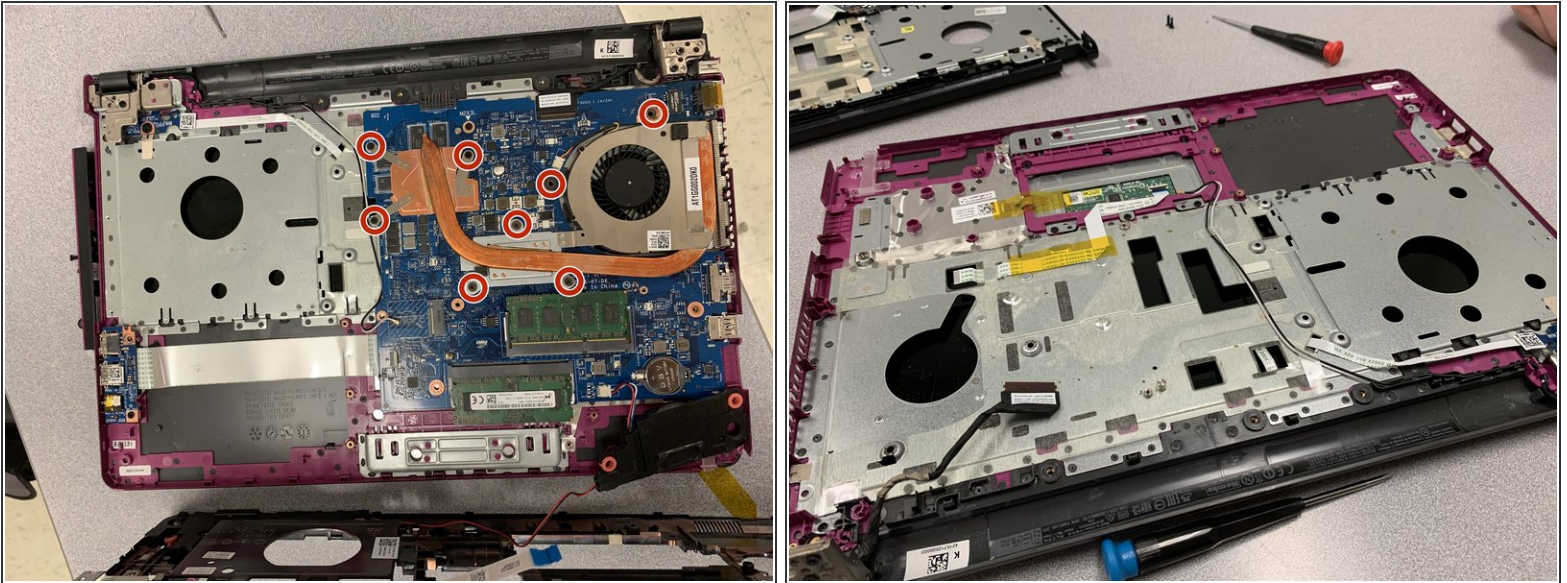


## Step 13 — Left and Right Hinges



- Unscrew all screws securing the left and right hinges.
- Lift the hinges up towards the screen to expose the lower components.
- ⓘ The lift hinge when facing the laptop towards the screen has a circuit board under the hinge. This should be removed after taking out the screws.
- ⚠ If a golden threaded screw component breaks off the plastic base, use pliers to hold the component while unscrewing the screw to remove the screw.

## Step 14 — Remove Motherboard and Heatsink



- Unscrew the following screws from the motherboard and heatsink.
- Disconnect the power button cable.
- Lift from the laptop the motherboard and the heatsink assembly.

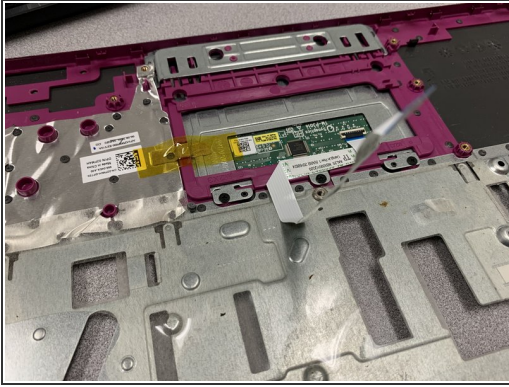
## Step 15 — Remove Screen



- Remove the screen from the lower assembly by lifting it up from the now disconnected right and left hinges.



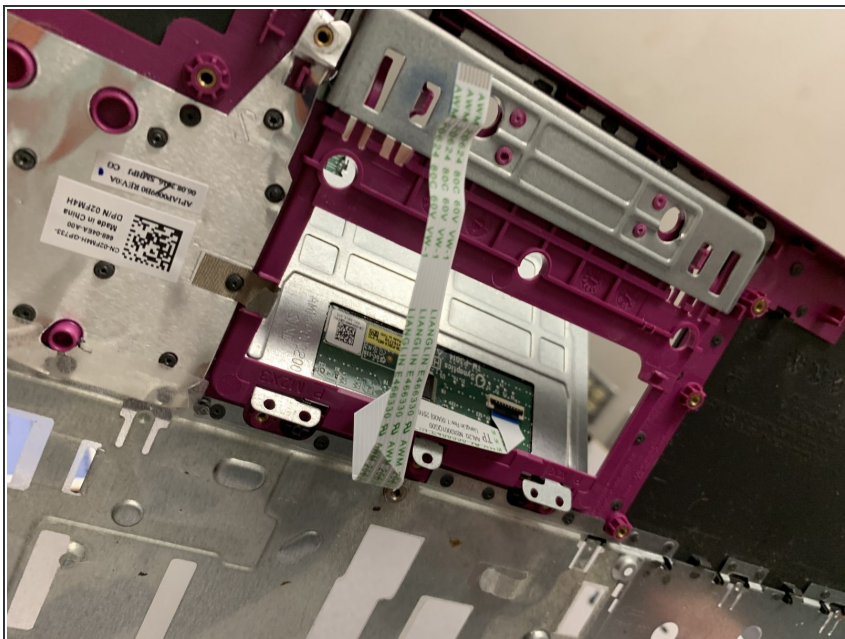
## Step 16 — Remove the Mousepad



- Take off the two gold pieces of tape.
- Unscrew the circuit board near the left hinge, when looking at the laptop from the front. (This is connected to the mousepad)
- Remove tape and lift off the black and white antenna cables starting at the mousepad to the left hinge.
- Take off the tan golden tape.
- From the back, pop out the mousepad from the assembly. Be careful to lift out the tabs correctly.

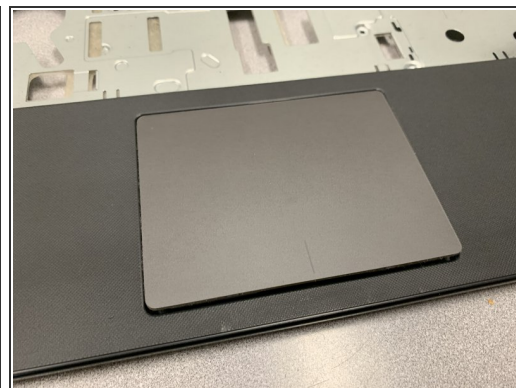
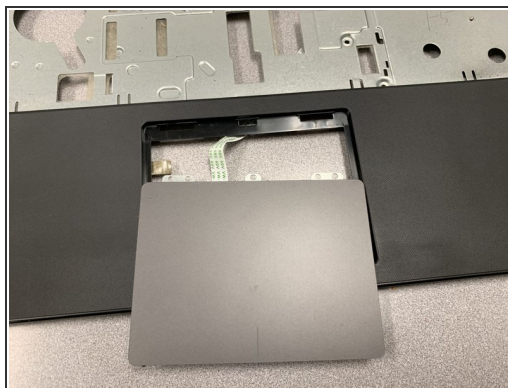


## Step 17 — Replace the Palm-Rest Assembly



- Remove the original palm-rest assembly component from the laptop
- Get out the replacement palm-rest assembly component.
- ☑ From this step onward, use the new replacement palm-rest assembly component.

## Step 18 — Attach the Mousepad



- Fit the mousepad into the new palm-rest assembly component from the front of the laptop
- Make sure to fit the cables through the back.
- Put golden tape back on.
- Adjust the cable for the mousepad back through slots on the internal side of the palm-rest assembly

To reassemble your device, follow these instructions in reverse order with the new replacement palm-rest assembly component.