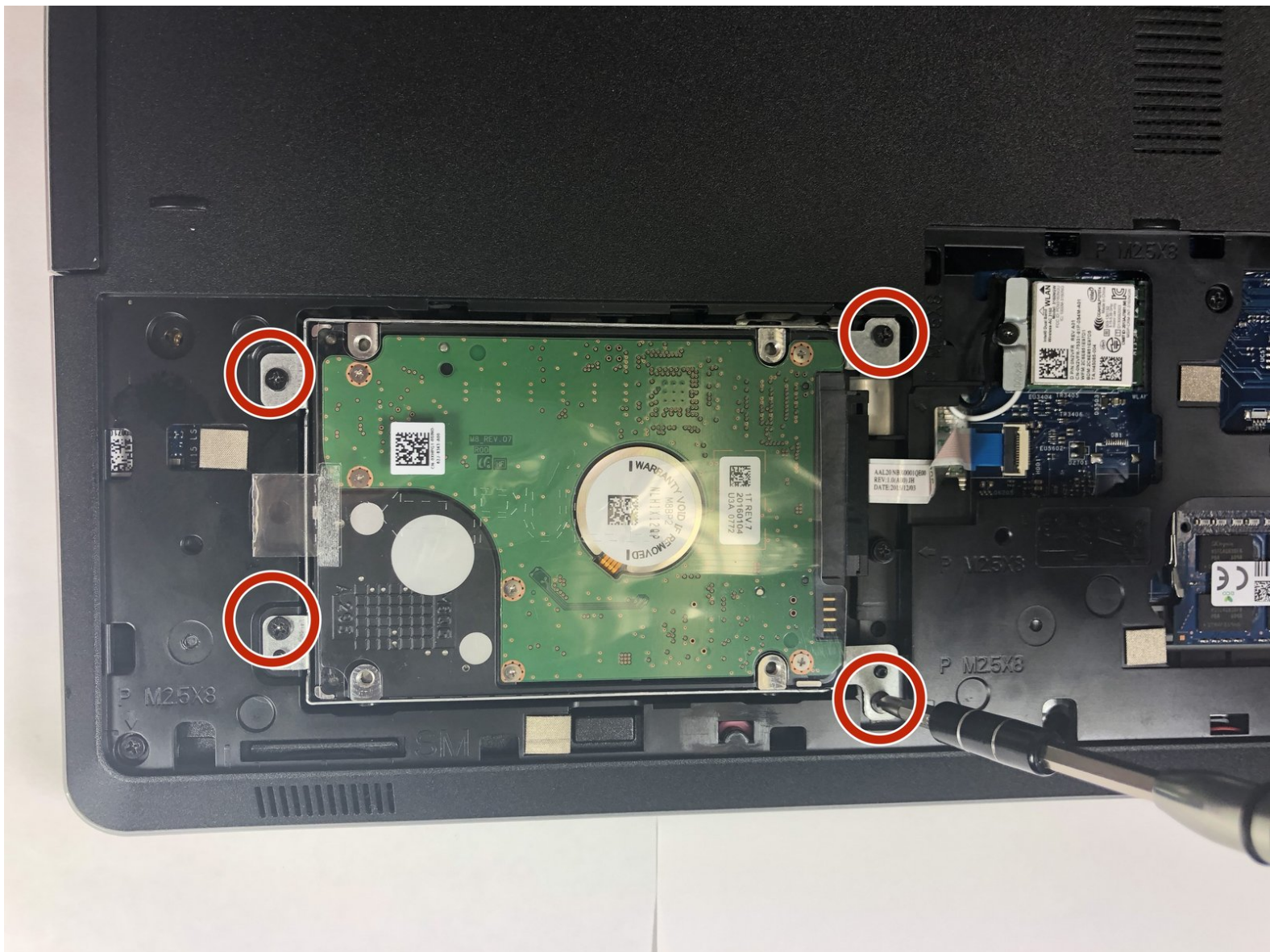




Dell Inspiron 15-5559 Hard Drive Replacement

This guide will show you how to replace the hard drive for the Dell Inspiron 15-5559.

Written By: Kyla Ward



INTRODUCTION

Before you begin, make sure that your device is disconnected from any power sources and be sure that the battery has been removed. You'll need a Phillips #1 screwdriver and a black nylon spudger to complete this guide.



TOOLS:

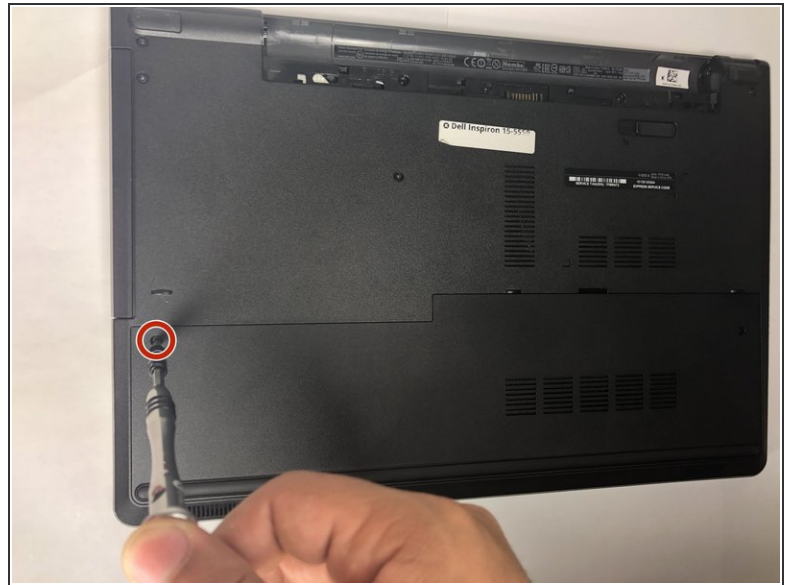
- [Phillips #1 Screwdriver](#) (1)
- [Spudger](#) (1)



PARTS:

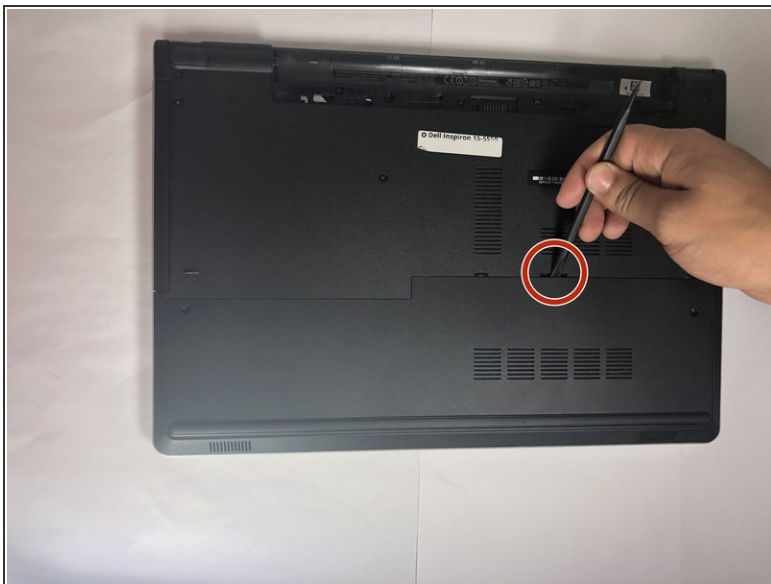
- [Dell Inspiron 15-5559 Back Panel](#) (1)
- [m2.5x8 screws](#) (6)
- [Dell Inspiron 15-5559 Hard Drive](#) (1)

Step 1 — Back Panel



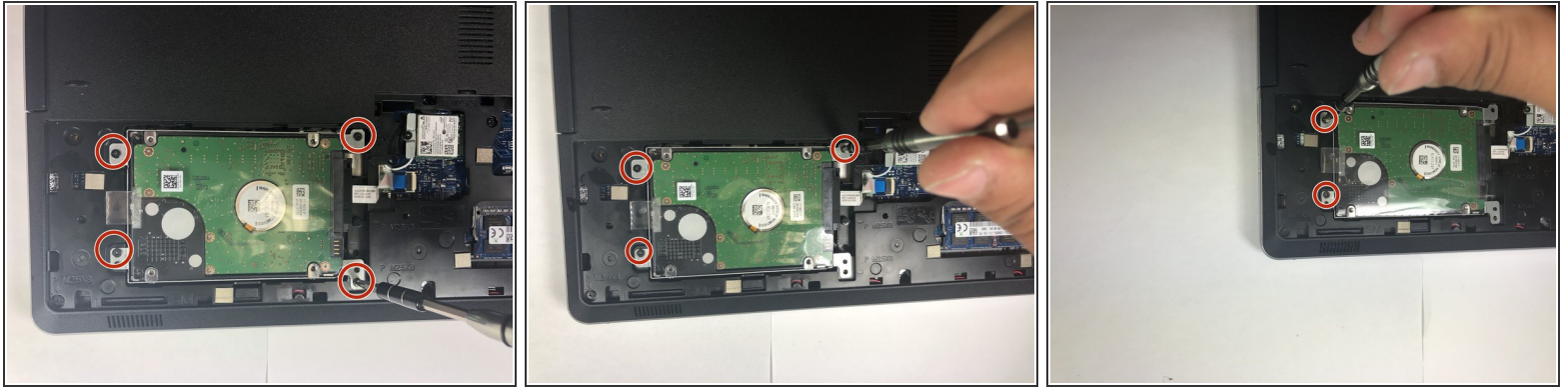
- Use a Phillips #1 screwdriver to remove the two 2.5x8mm screws on the back panel.

Step 2



- Place the plastic spudger in the slot. Using the flat side of the spudger pry the back panel upward and off.
- ⓘ Do not be afraid to use a bit of muscle, as the panel does not come off without some force.

Step 3 — Hard Drive



- Remove each of the four (4) 2.5x8mm screws that anchor the hard drive using a Phillips #1 screwdriver.

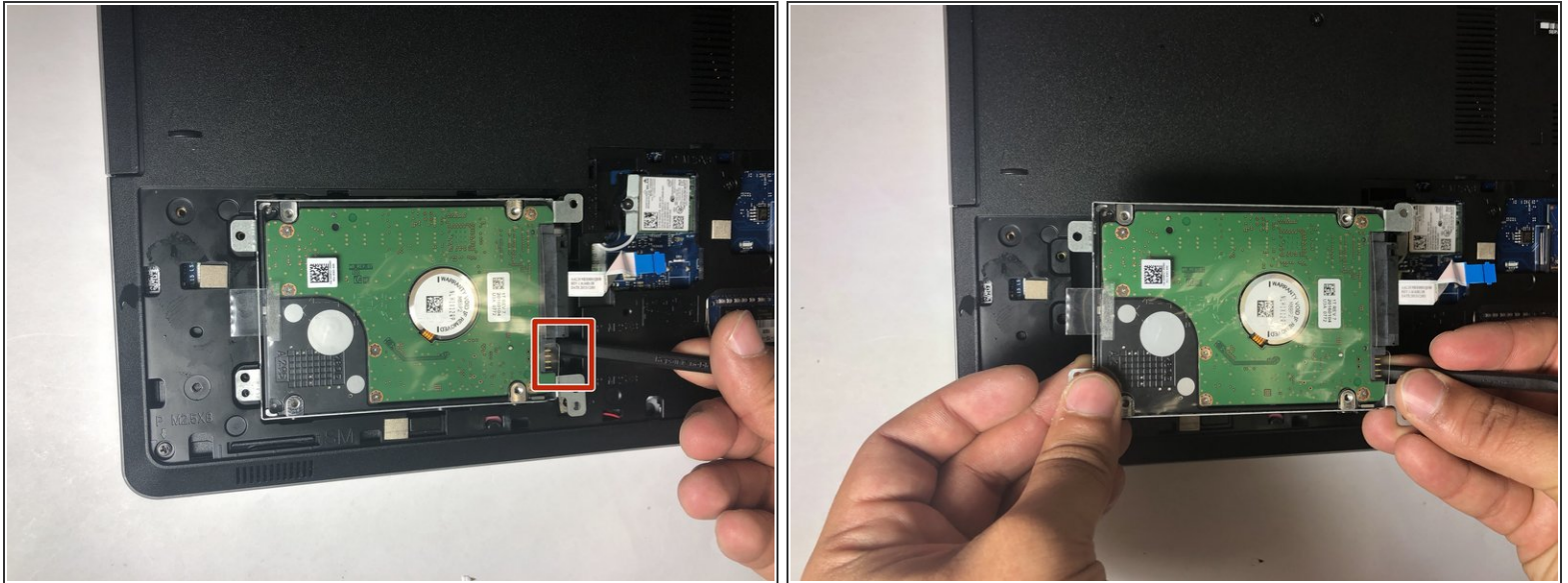
Step 4



- Use the plastic spudger to remove the hard drive conductive tape by lifting the black clasp holding it down, then pulling the conductive tape toward the left to remove it.

⚠ It does not take much force to remove the conductive tape. Remove it gently so that you do not damage it.

Step 5



- Place the plastic spudger underneath the hard drive at the indicated position.
- Use the spudger along with your other hand to gently remove the hard drive.

To reassemble your device, follow these instructions in reverse order.