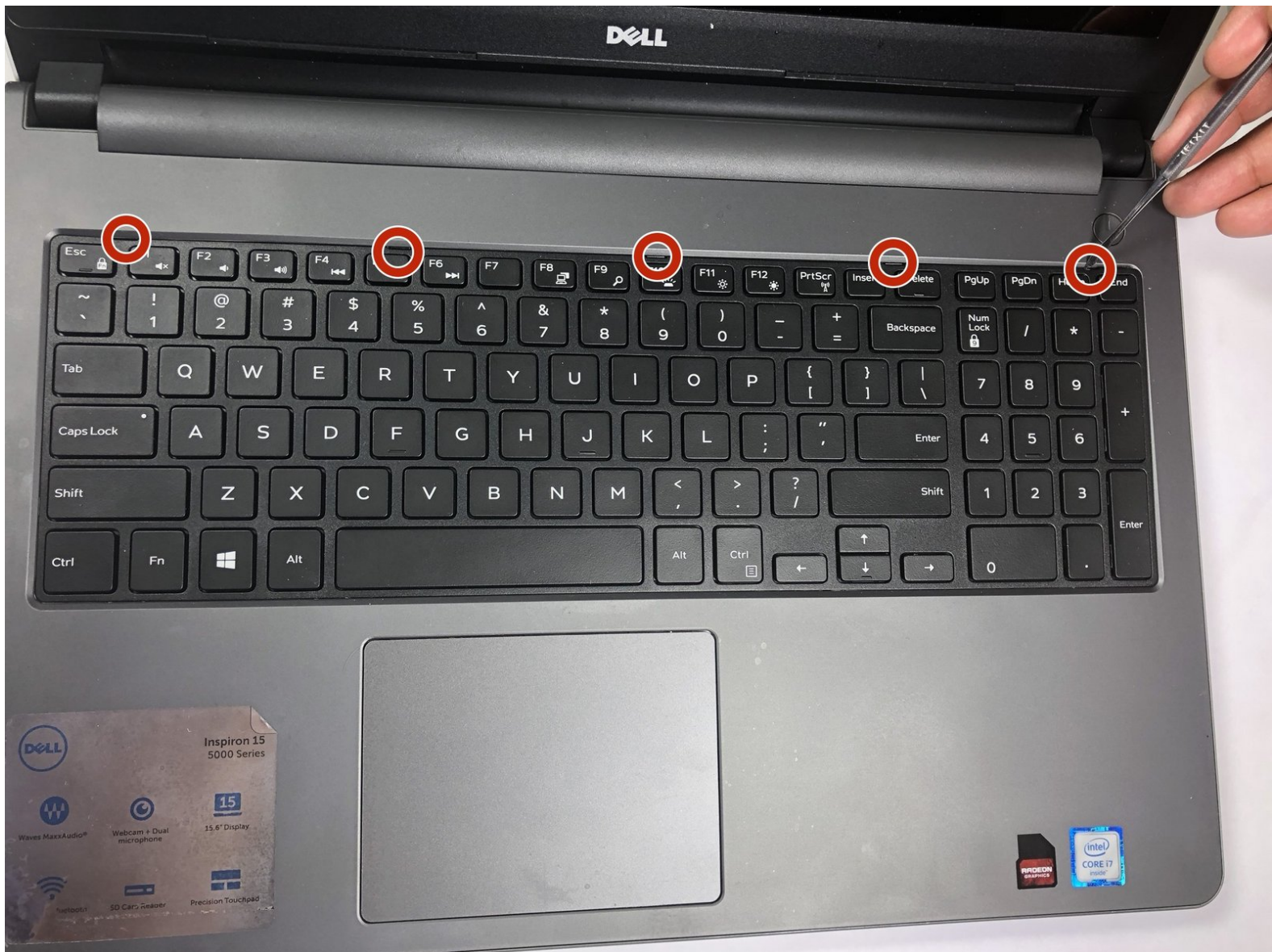




Dell Inspiron 15-5559 Keyboard Replacement

How to replace the keyboard for the Dell Inspiron 15-5559.

Written By: Martin Lechuga



INTRODUCTION

Before beginning, you should make sure that your laptop is not connected to a power source and that the battery has been removed.



TOOLS:

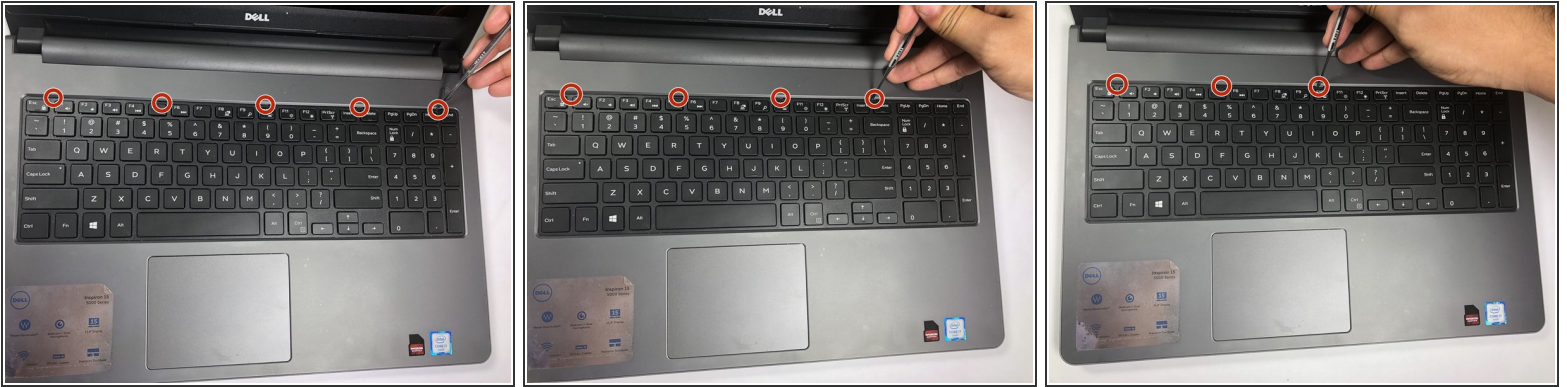
- [Spudger](#) (1)



PARTS:

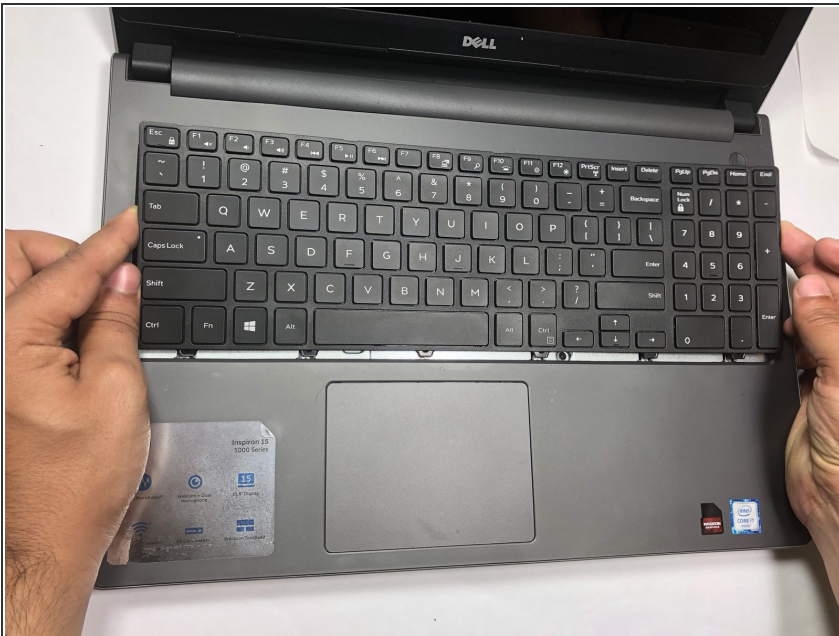
- [keyboard panel](#) (1)

Step 1 — Keyboard



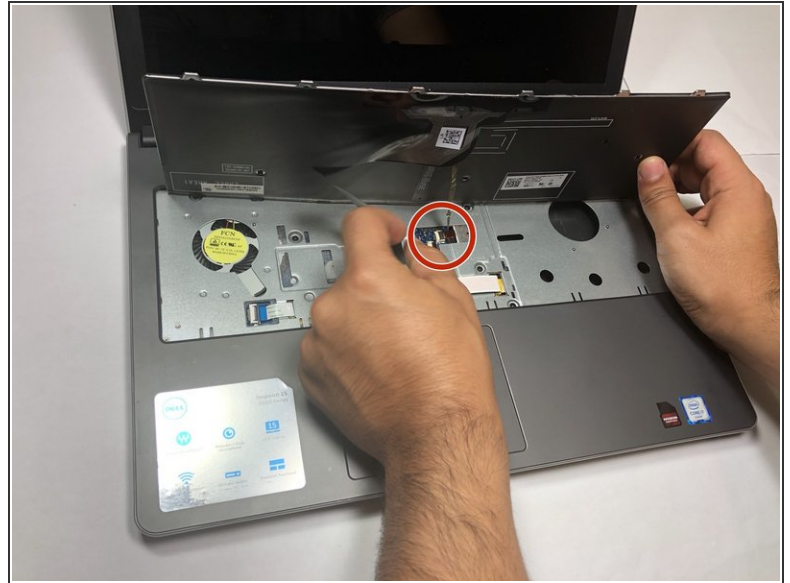
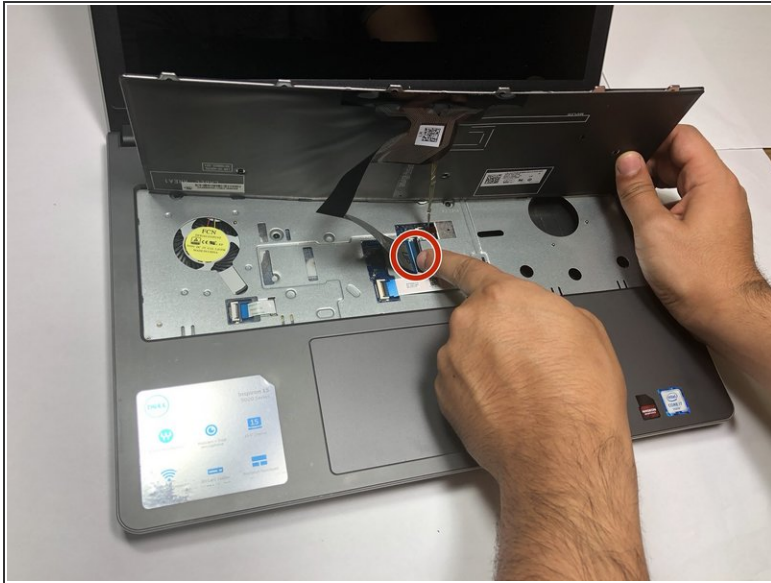
- Use the metal spudger to pry the keyboard off. Do this by inserting the spudger into each of the five indicated slots at the top of the keyboard and gently pulling up on the keyboard with the spudger. Do not be afraid to use a bit of muscle to remove the keyboard, as it takes a bit of force to remove

Step 2



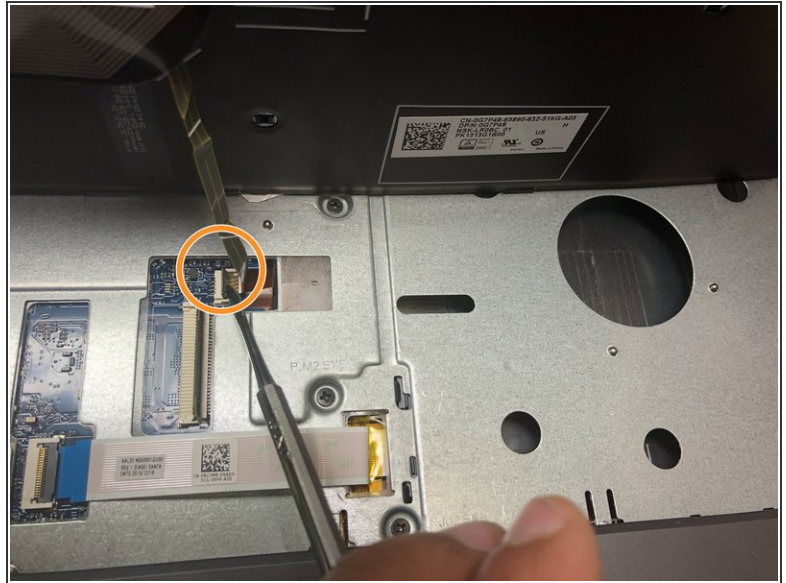
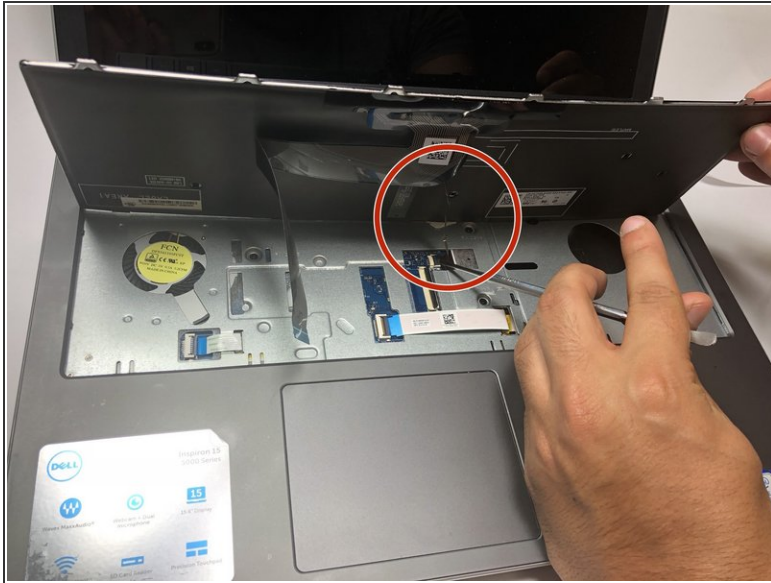
- Once you have pried the keyboard off with the spudger, lift the keyboard upward with your hands.
- ⚠ It is important to note that the keyboard is still attached to the device with two flat connective cables. It is important that you gently remove the keyboard to prevent damaging the cables.

Step 3



- Once the keyboard has been lifted you will notice two conductive tape cables. one large and one small.

Step 4



- Disconnect the smaller of the two flat conductive tape cables.
- Place a metal spudger on the end of the cable that is connected to the laptop and use it to lift the black clasp holding the tape down, then pull the cable out toward the right. Repeat for the second larger piece of conductive tape.

⚠ You should remove this flat connective cable with care to prevent damaging it.

To reassemble your device, follow these instructions in reverse order.