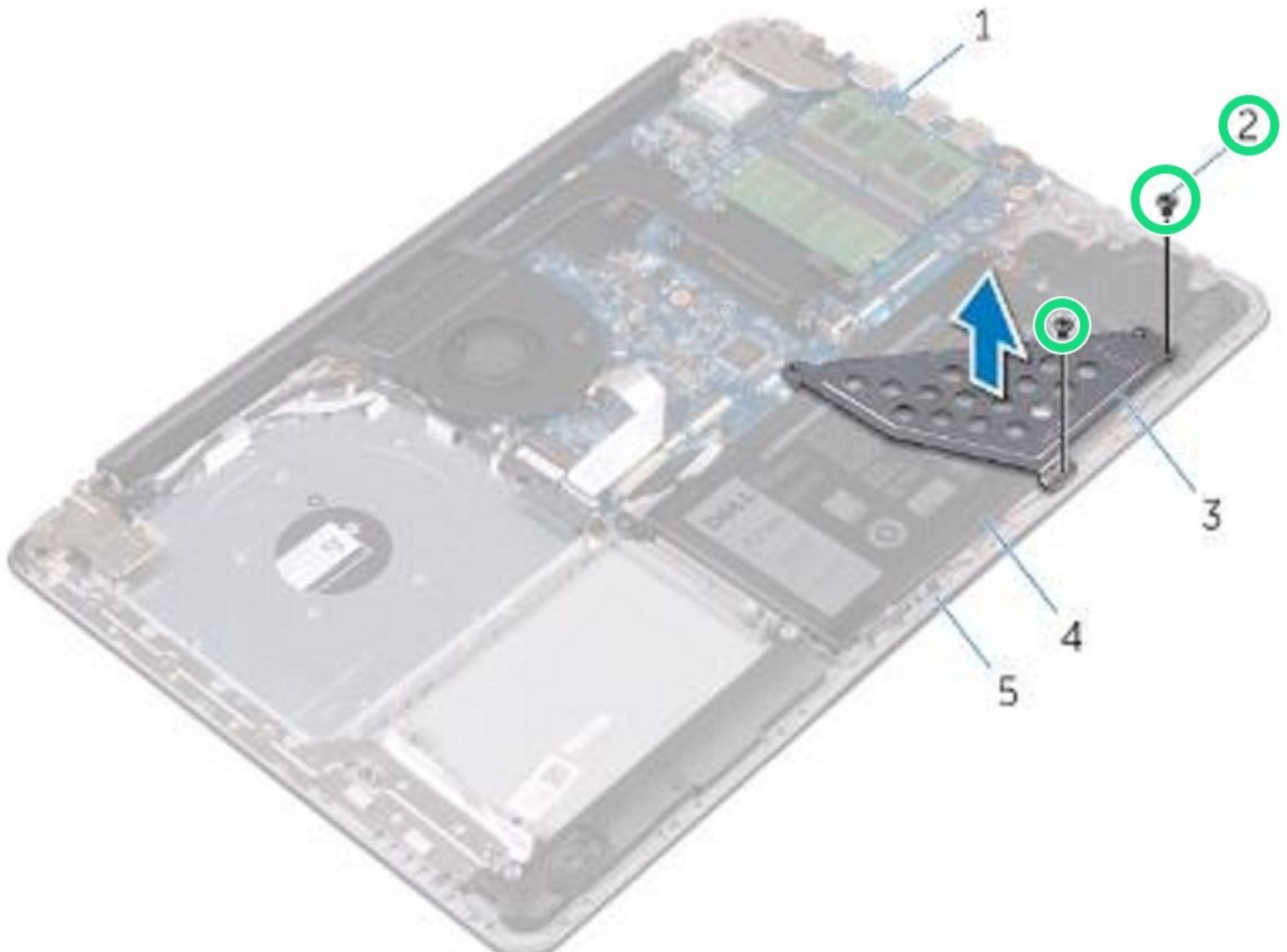




Dell Inspiron 15-5567 Battery Replacement

Written By: Terrence15



INTRODUCTION

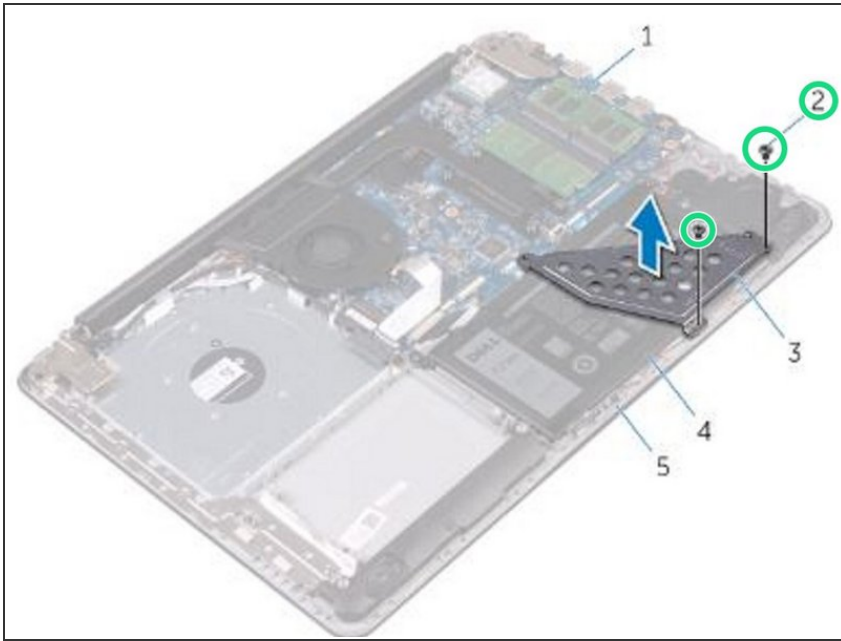
In this guide, we will be showing you how to remove and replace the Battery.



TOOLS:

- [Phillips #0 Screwdriver](#) (1)
-

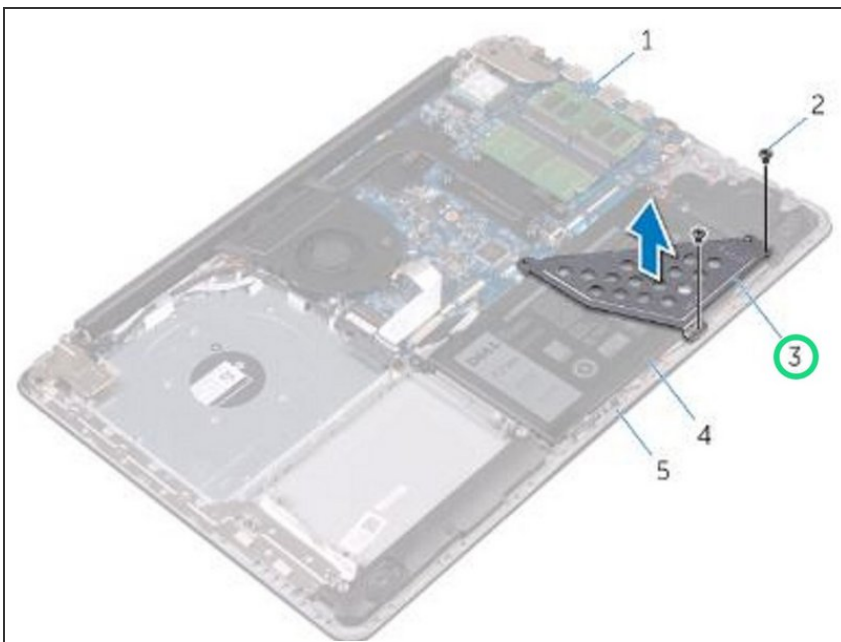
Step 1 — Remove the Screws



⚠ WARNING: Before working inside your computer, read the safety information that shipped with your computer and follow the steps in [Before Working Inside Your Computer](#). After working inside your computer, follow the instructions in [After Working Inside Your Computer](#).

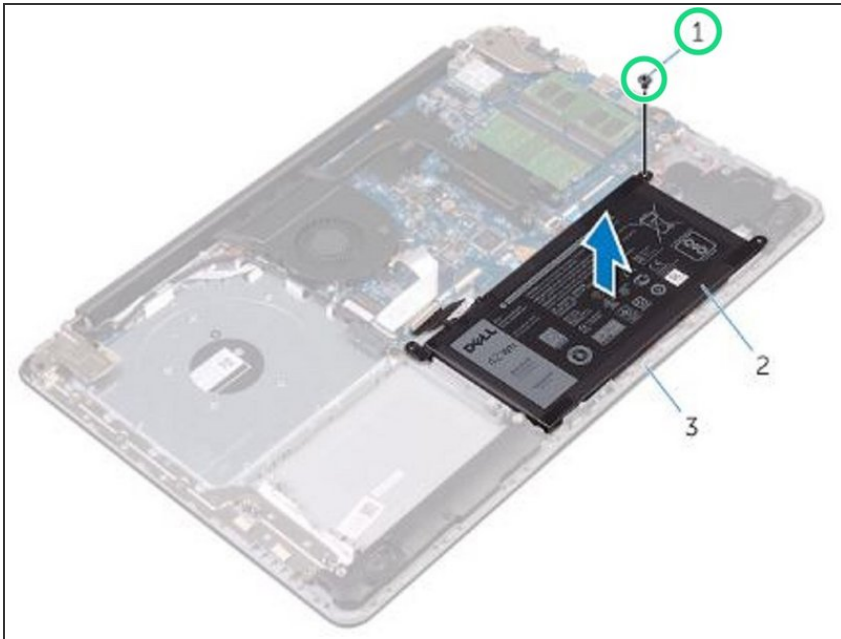
- Remove the screws that secure the battery bracket to the system board and palm rest and keyboard assembly.

Step 2 — Removing the Battery Bracket



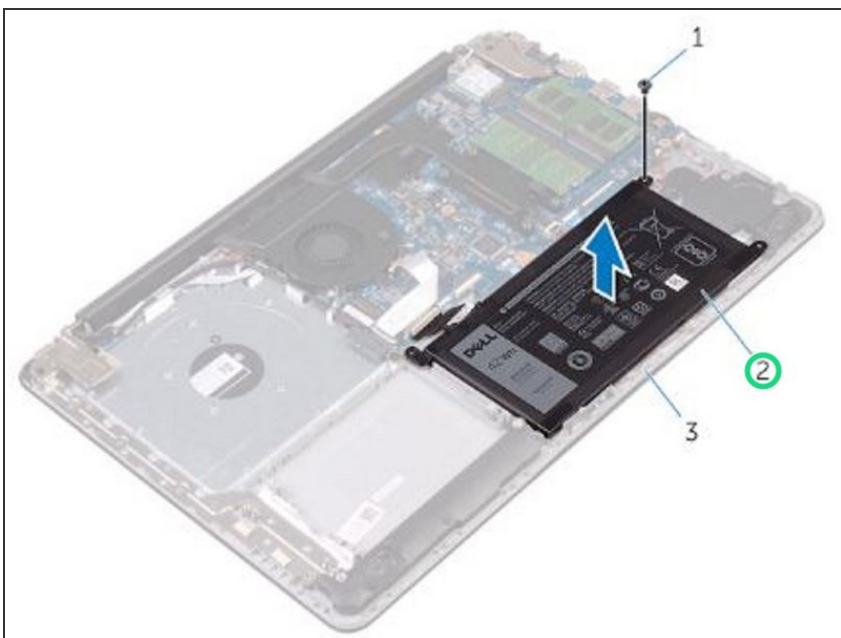
- Lift and remove the battery bracket.

Step 3 — Remove the Screw



- Remove the screw that secures the battery to the palm rest and keyboard assembly.
- ⓘ NOTE: Note the location of the screw that secures the battery to the palm rest and keyboard assembly.

Step 4 — Lifting the Battery



- Lift the battery off the palm rest and keyboard assembly.

To reassemble your device, follow these instructions in reverse order.