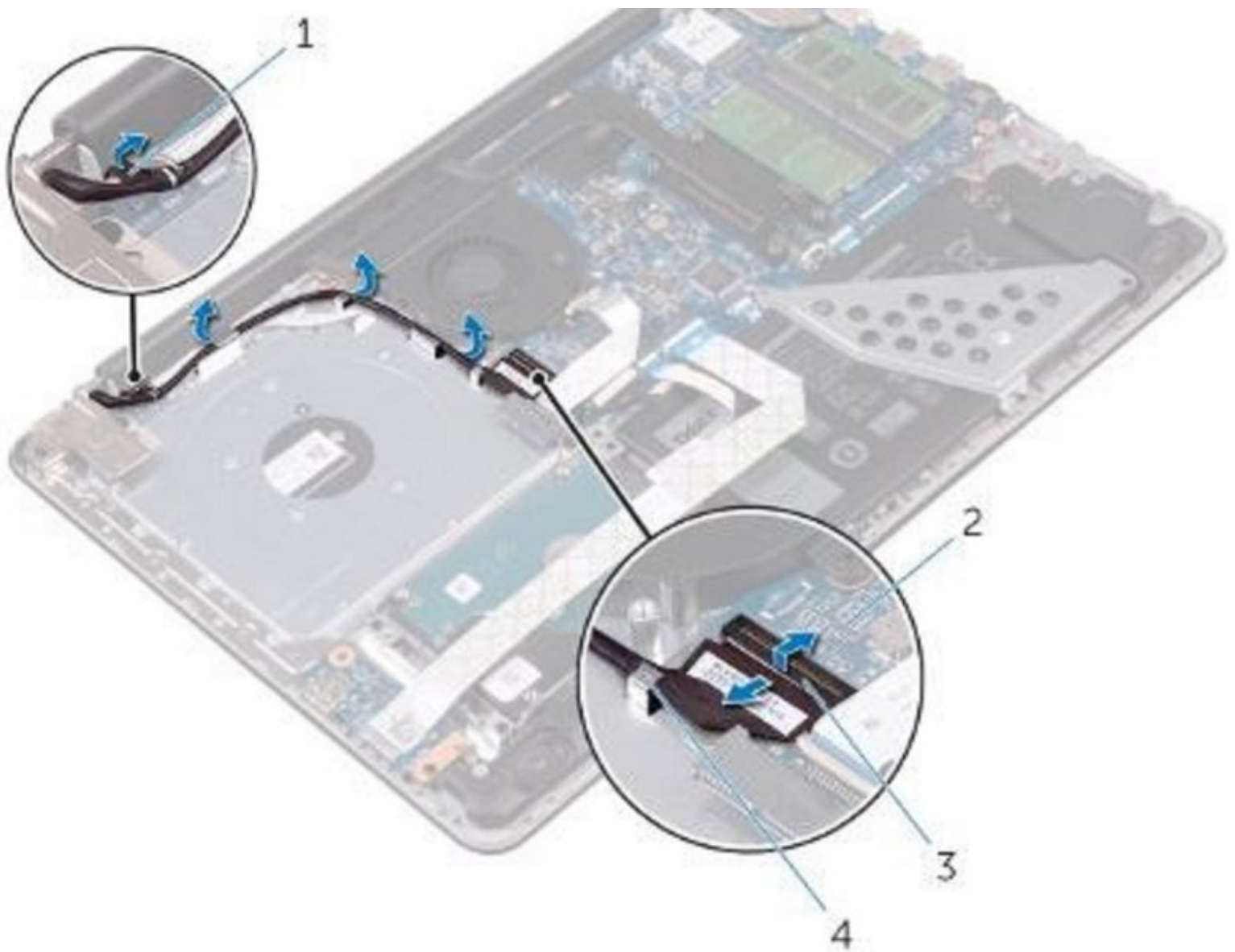




Dell Inspiron 15-5567 Display Assembly Replacement

Written By: Terrence15



INTRODUCTION

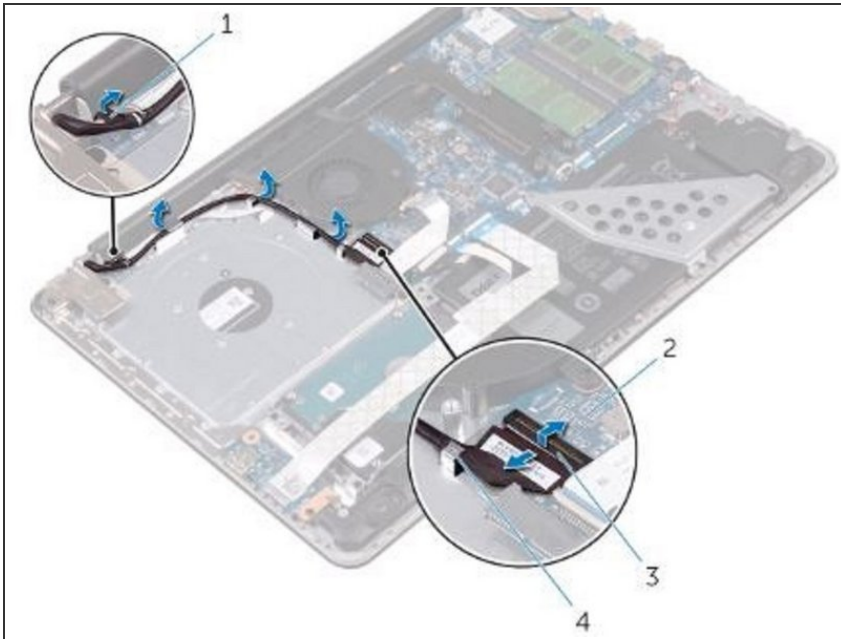
In this guide, we will be showing you how to remove and replace the Display Assembly.



TOOLS:

- [Phillips #0 Screwdriver](#) (1)
-

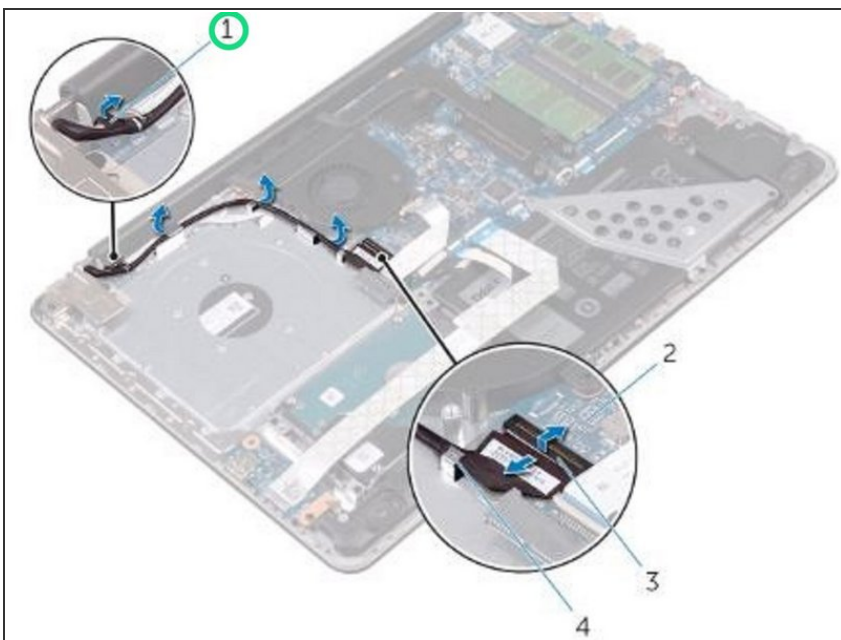
Step 1 — Remove the Battery Cable



⚠ WARNING: Before working inside your computer, read the safety information that shipped with your computer and follow the steps in [Before Working Inside Your Computer](#). After working inside your computer, follow the instructions in [After Working Inside Your Computer](#).

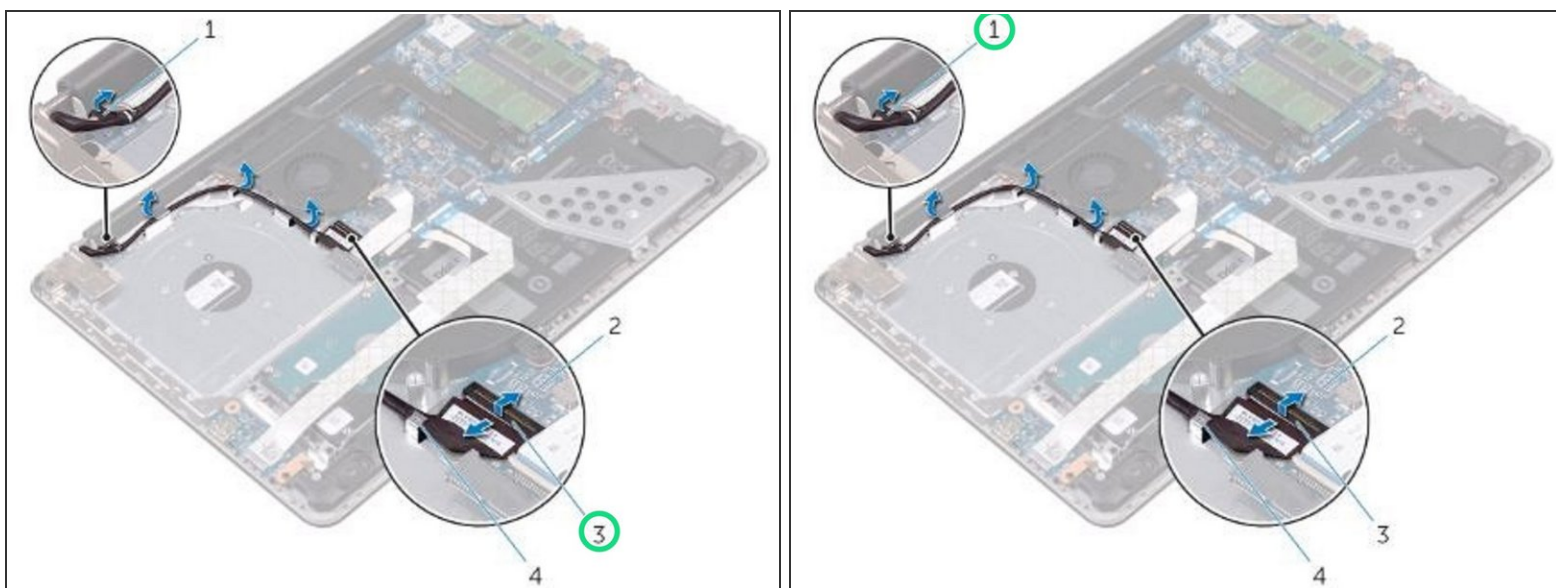
- Remove the battery cable from the system board.

Step 2 — Note the Display Cable Routing



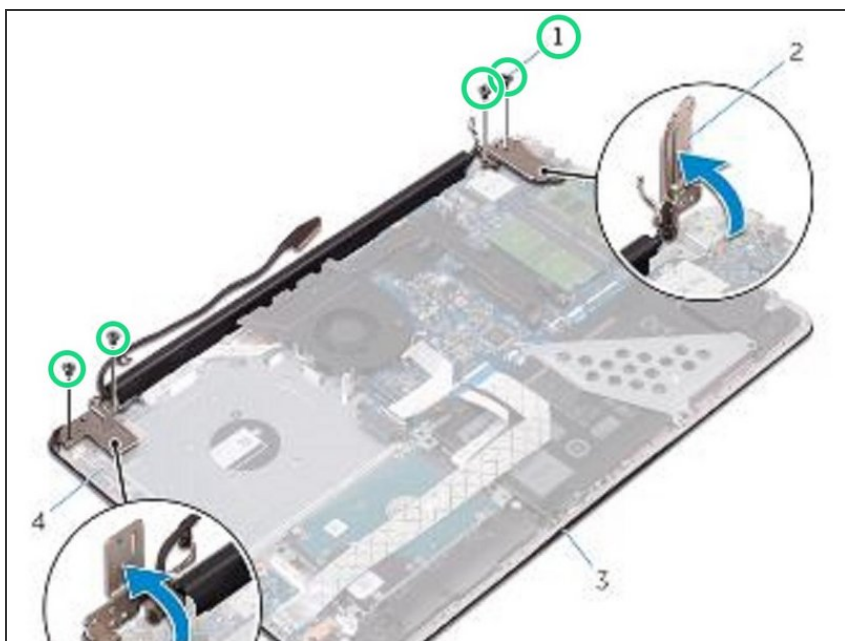
- Note the display cable routing and remove the cable from its routing guides.

Step 3 — Lifting the Latch



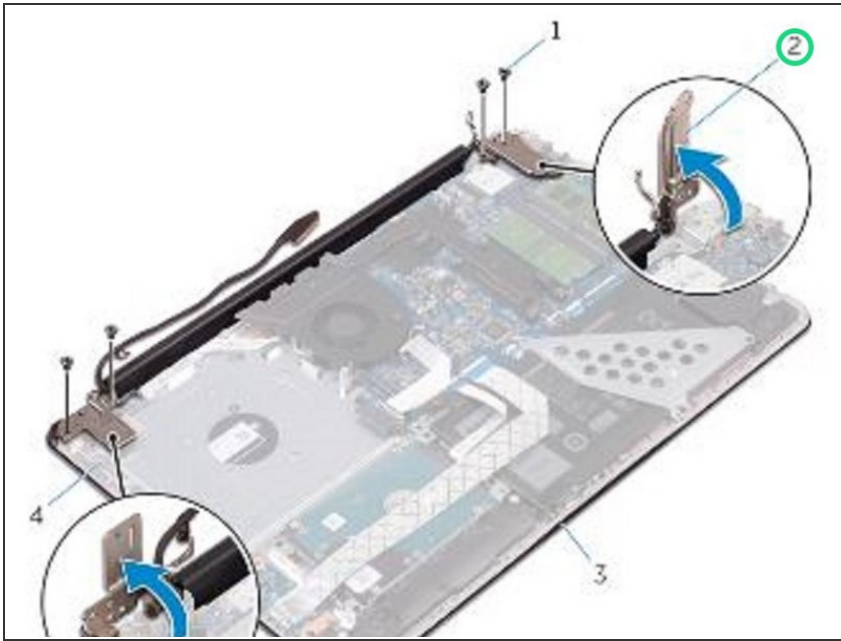
- Lift the latch and disconnect the display cable from the system board.

Step 4 — Remove the Screws



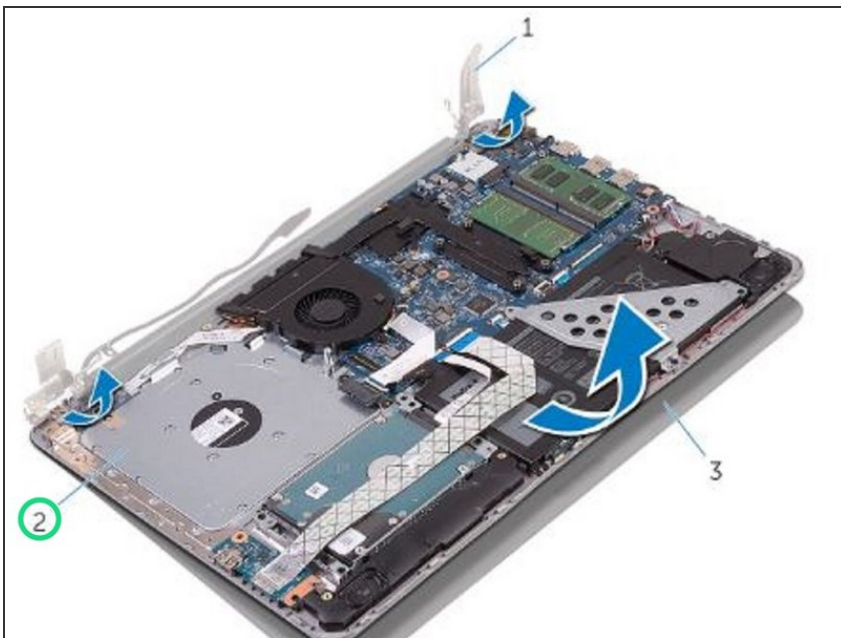
- Remove the screws that secure the display hinges to the palm rest and keyboard assembly.

Step 5 — Open the Display Hinges



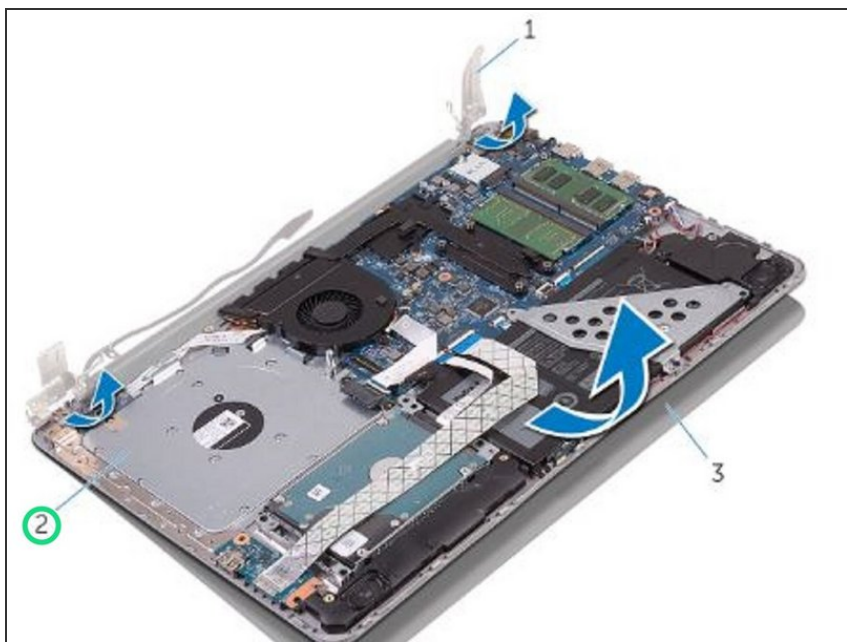
- Open the display hinges.

Step 6 — Lifting the Palm Rest



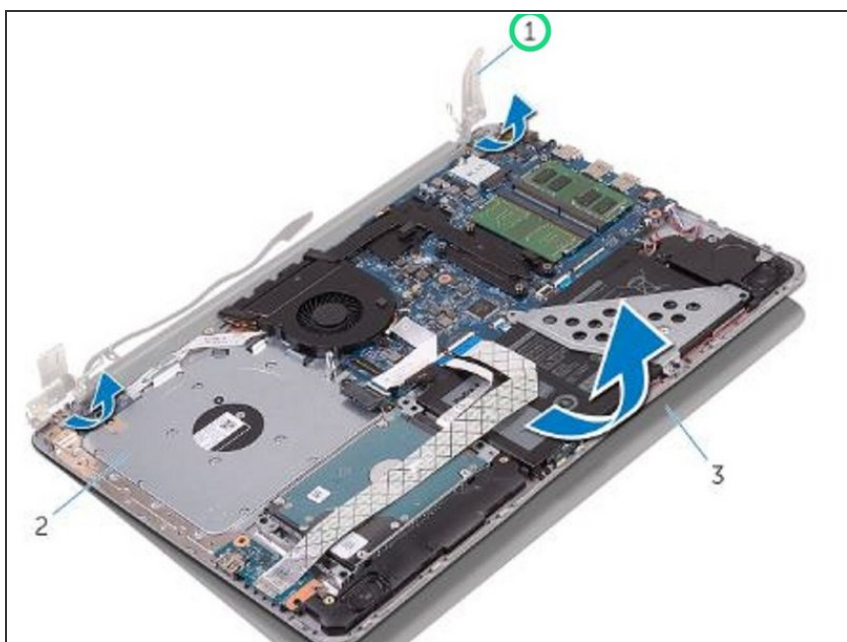
- Lift the palm rest and keyboard assembly off the display assembly.

Step 7 — Placing the Display Assembly



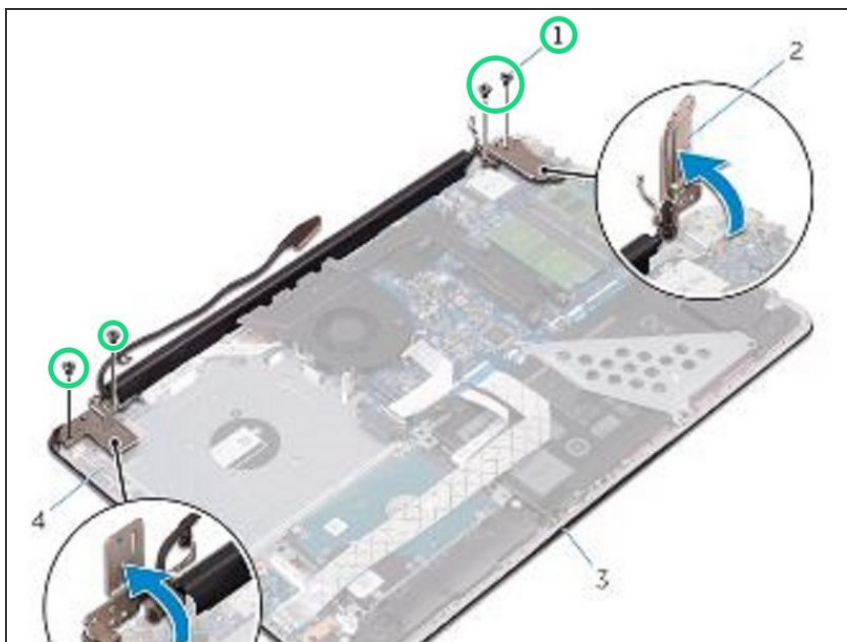
- Place the palm rest and keyboard assembly on the **NEW** display assembly.

Step 8 — Press the Display Hinges



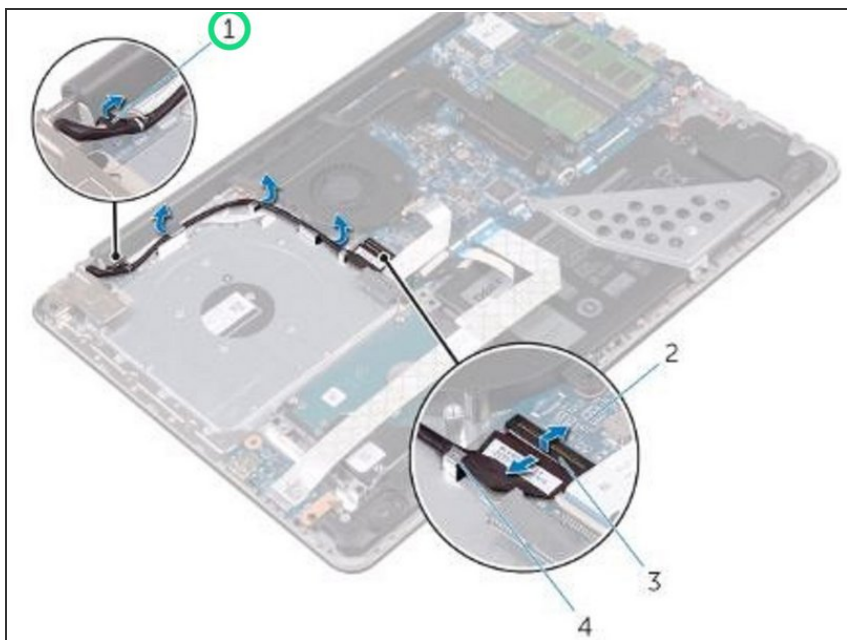
- Using the alignment posts, press the display hinges down on the palm rest and keyboard assembly.

Step 9 — Replace the Screws



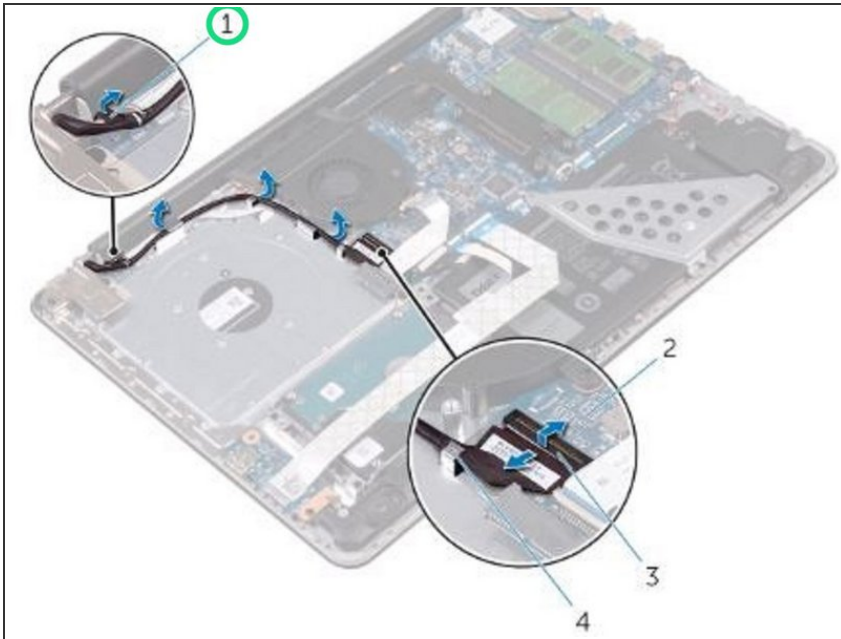
- Replace the screws that secure the display hinges to the palm rest and keyboard assembly.

Step 10 — Routing the Display Cable



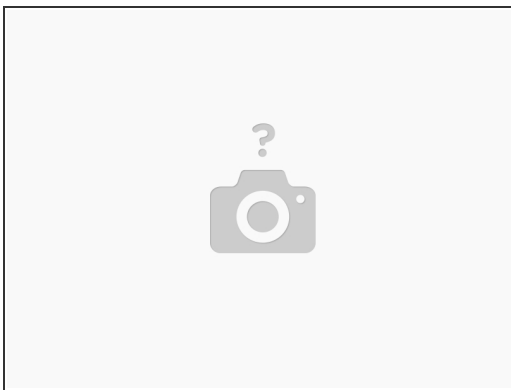
- Route the display cable through the routing guides on the palm rest and keyboard.

Step 11 — Sliding the Display Cable



- Slide the display cable to the connector on the system board and close the latch to secure the cable.

Step 12 — Sliding the Battery Cable



- Slide the battery cable to the connector on the system board.