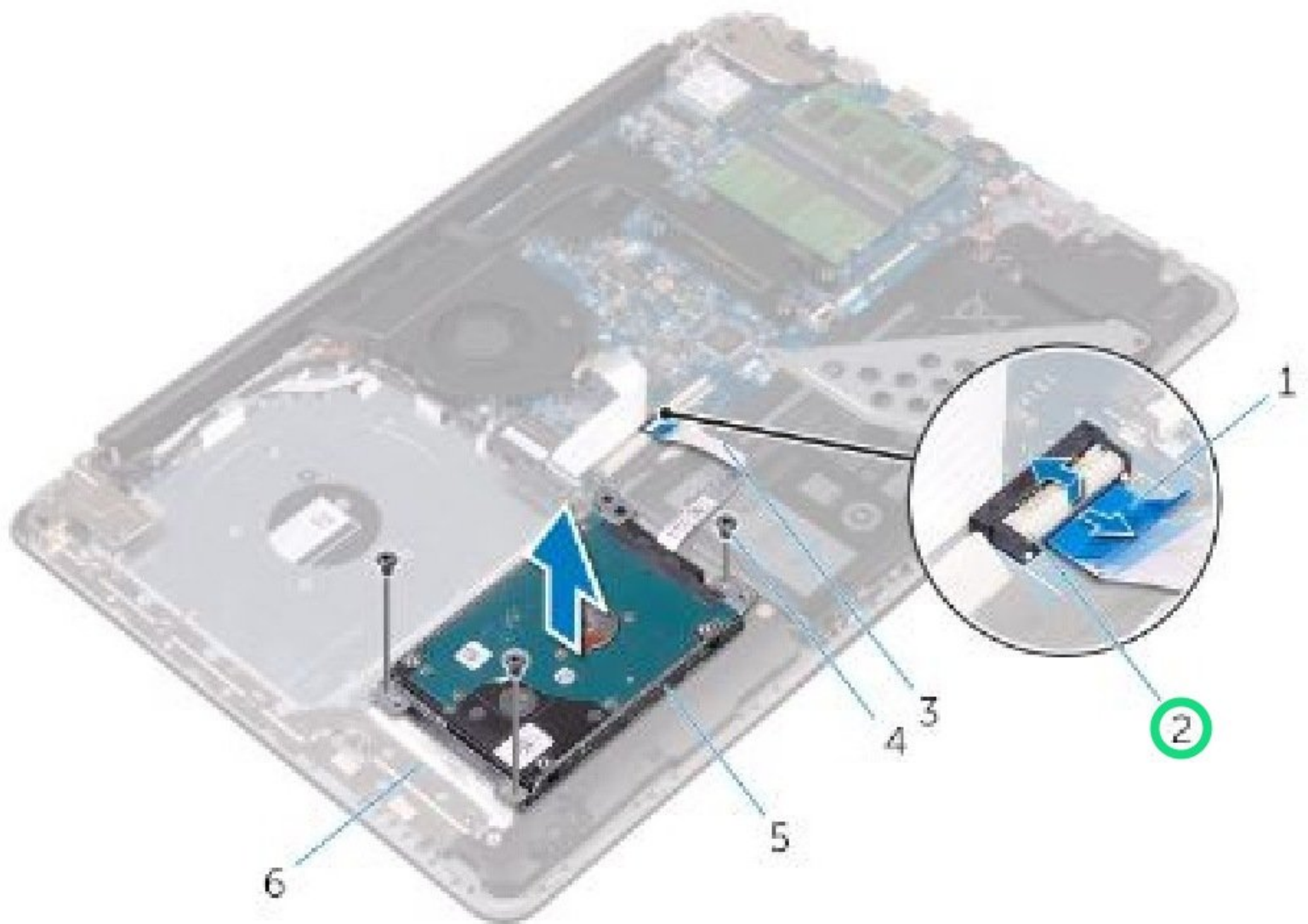




Dell Inspiron 15-5567 Hard Drive Replacement

Written By: Terrence15



INTRODUCTION

In this guide, we will be showing you how to remove and replace the Hard Drive.



TOOLS:

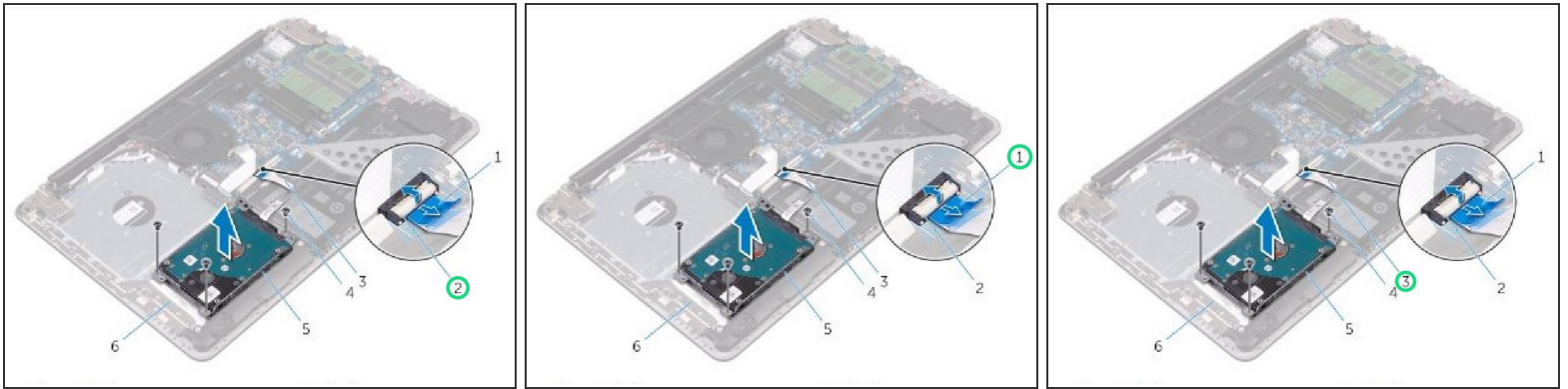
- [Phillips #0 Screwdriver](#) (1)



PARTS:

- [1 TB SSD / Upgrade Bundle](#) (1)
- [250 GB SSD / Upgrade Bundle](#) (1)
- [500 GB SSD / Upgrade Bundle](#) (1)
- [2 TB SSD / Upgrade Bundle](#) (1)

Step 1 — Lifting the Latch



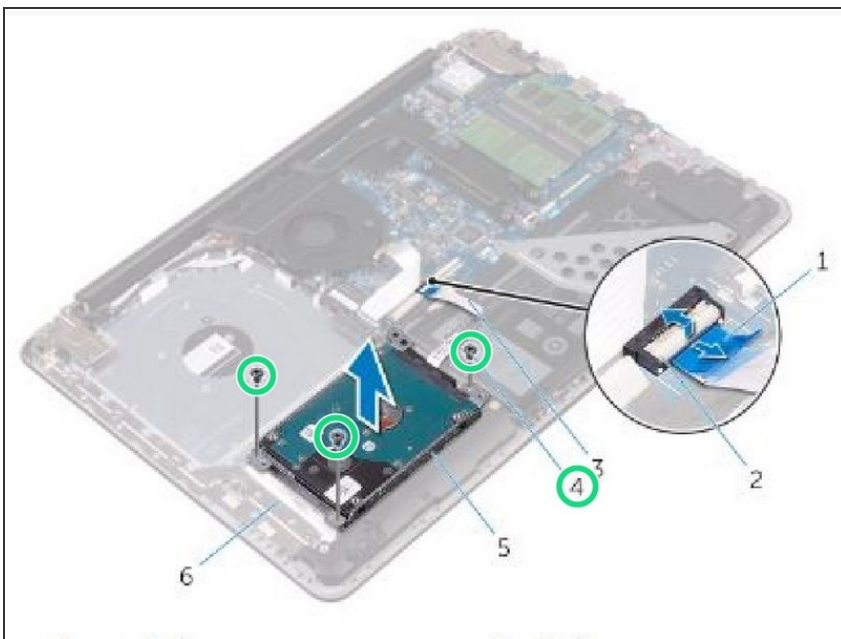
⚠ WARNING: Before working inside your computer, read the safety information that shipped with your computer and follow the steps in [Before Working Inside Your Computer](#). After working inside your computer, follow the instructions in [After Working Inside Your Computer](#).

⚠ CAUTION: Hard drives are fragile. Exercise care when handling the hard drive.

⚠ CAUTION: To avoid data loss, do not remove the hard drive while the computer is in sleep or on state.

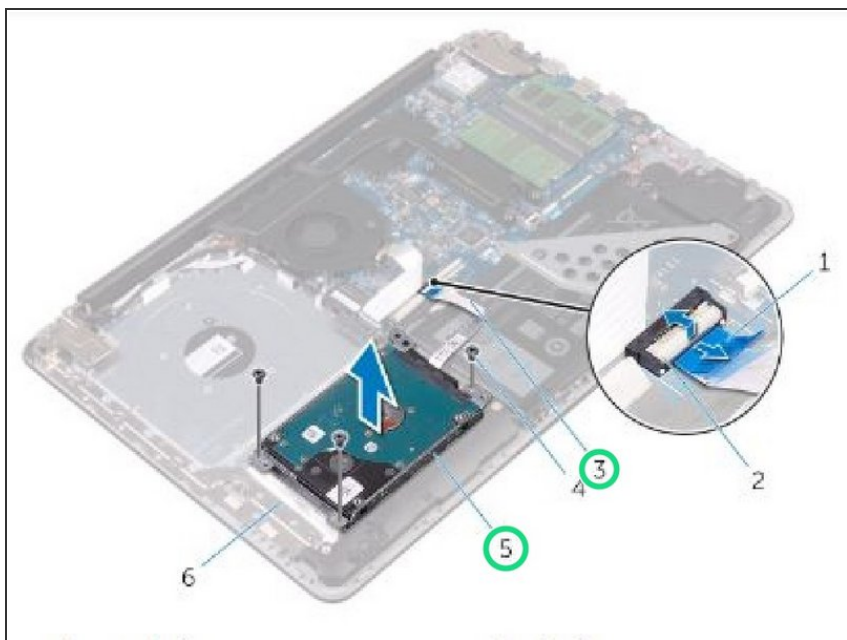
- Lift the latch and using the pull tab, disconnect the hard-drive cable from the system board.

Step 2 — Remove the Screws



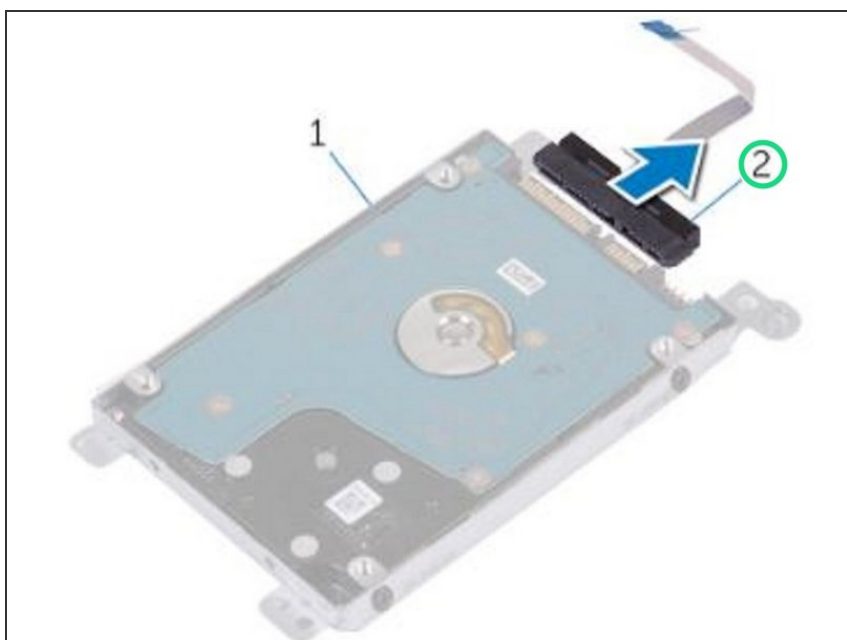
- Remove the screws that secure the hard-drive assembly to the palm rest and keyboard assembly.

Step 3 — Lifting the Hard Drive Assembly



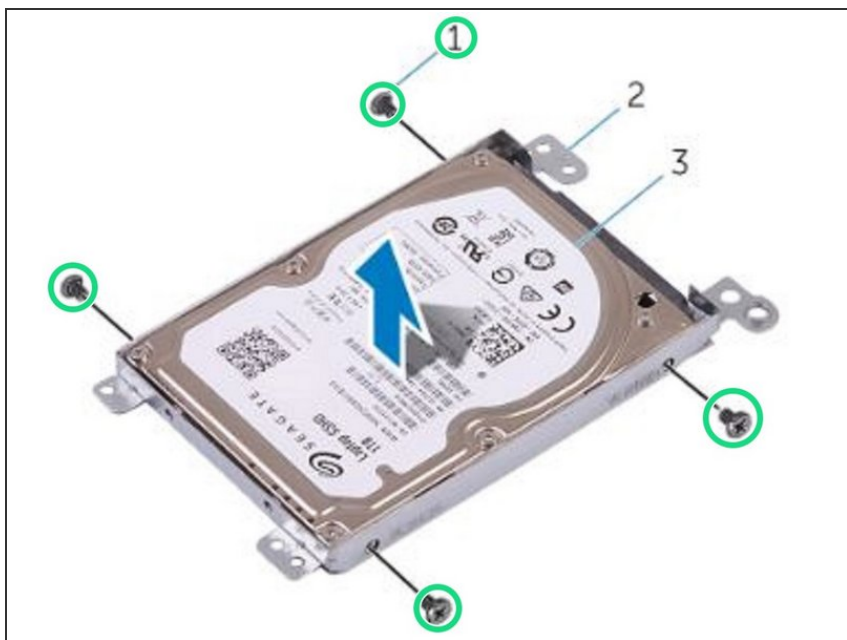
- Lift the hard-drive assembly along with its cable off the palm rest and keyboard assembly.

Step 4 — Disconnecting the Interposer



- Disconnect the interposer from the hard-drive assembly.

Step 5 — Remove the Screws



- Remove the screws that secure the hard-drive bracket to the hard drive.

Step 6 — Lifting the Hard Drive



- Lift the hard drive off the hard-drive bracket.

Step 7 — Align the Screw Holes



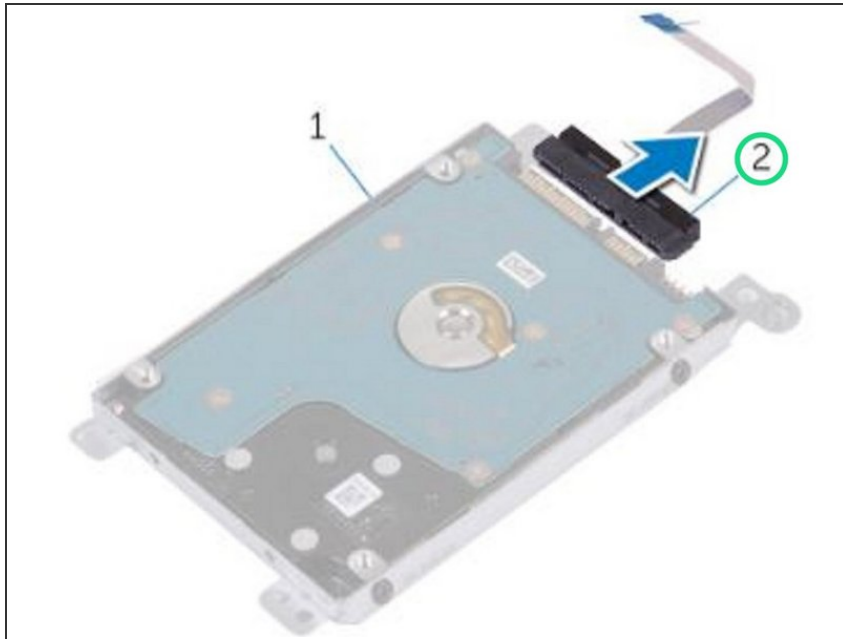
- Align the screw holes on the hard-drive bracket with the screw holes on the hard drive.

Step 8 — Replace the Screws



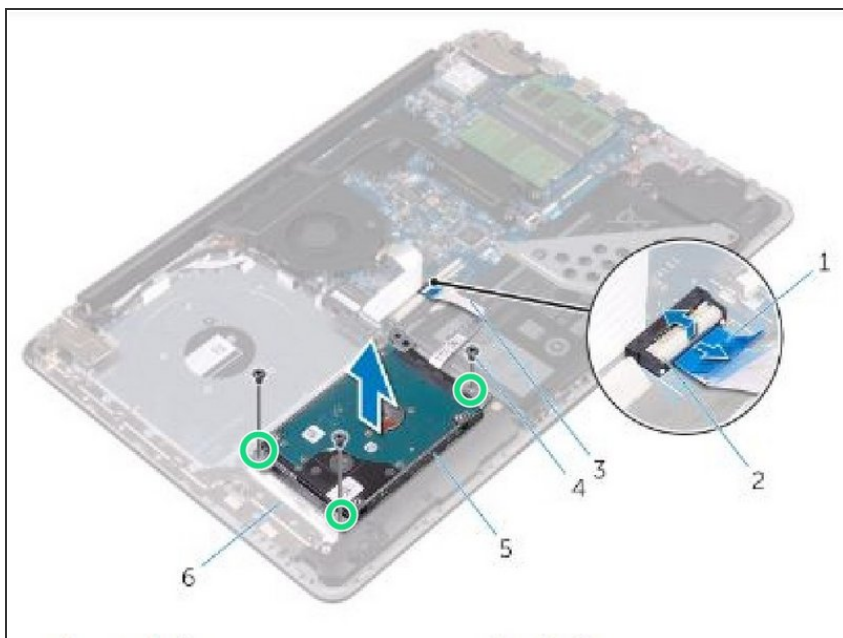
- Replace the screws that secure the hard-drive bracket to the hard drive.

Step 9 — Connecting the Interposer



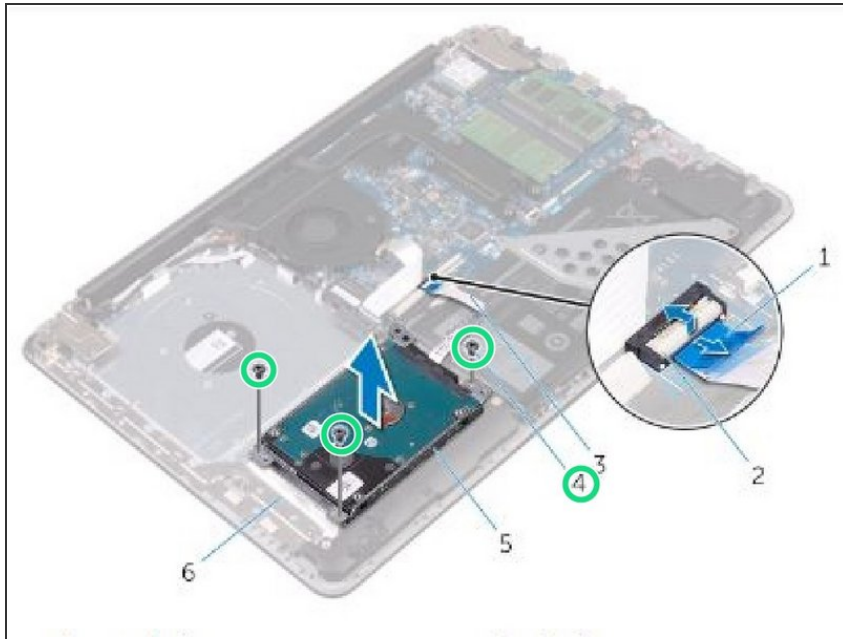
- Connect the interposer to the hard-drive assembly.

Step 10 — Align the Screw Holes



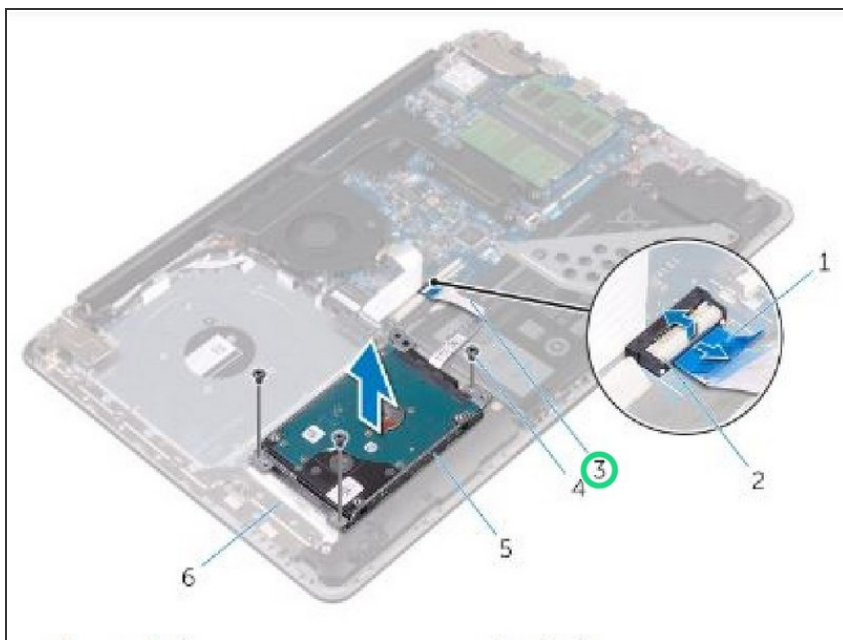
- Align the screw holes on the hard-drive assembly with the screw holes on the palm rest and keyboard assembly.

Step 11 — Replace the Screws



- Replace the screws that secure the hard-drive assembly to the palm rest and keyboard assembly.

Step 12 — Connect the Hard-Drive Cable



- Connect the hard-drive cable to the system board and close the latch to secure the cable.