



Written By: Jean Whitmore



INTRODUCTION

Use this guide to replace the keyboard if you have determined your keyboard issues may be resolved by replacing the keyboard.



TOOLS:

- [Phillips #0 Screwdriver](#) (1)
 - [Spudger](#) (1)
-

Step 1 — Bottom Case



- Make sure the display is closed. Then, flip the computer over so that you can see the bottom cover.
- Loosen the two 5 mm Phillips #0 on the upper edge of the cover.
- ⓘ These screws will stay captive to the case.

Step 2



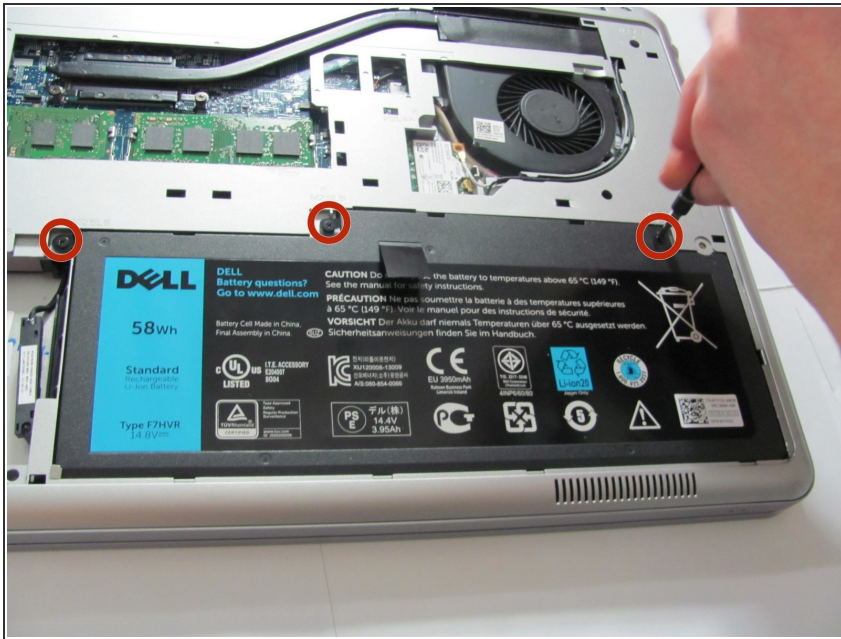
- Remove the two 5 mm interior screws that connect the cover to the assembly using the same Philips head screwdriver from the previous step.

Step 3



- Use a spudger to remove the base cover from the rest of bottom cover.

Step 4 — Battery



- Remove the three 5mm Phillips #0 screws that keep the battery connected to the computer.

Step 5



⚠ Ground the system board by turning over the computer, opening the display, and holding the power button down for about 5 seconds before proceeding.

- Using the pull tab on the battery, lift the battery out of the computer.

Step 6 — Removing the Keyboard



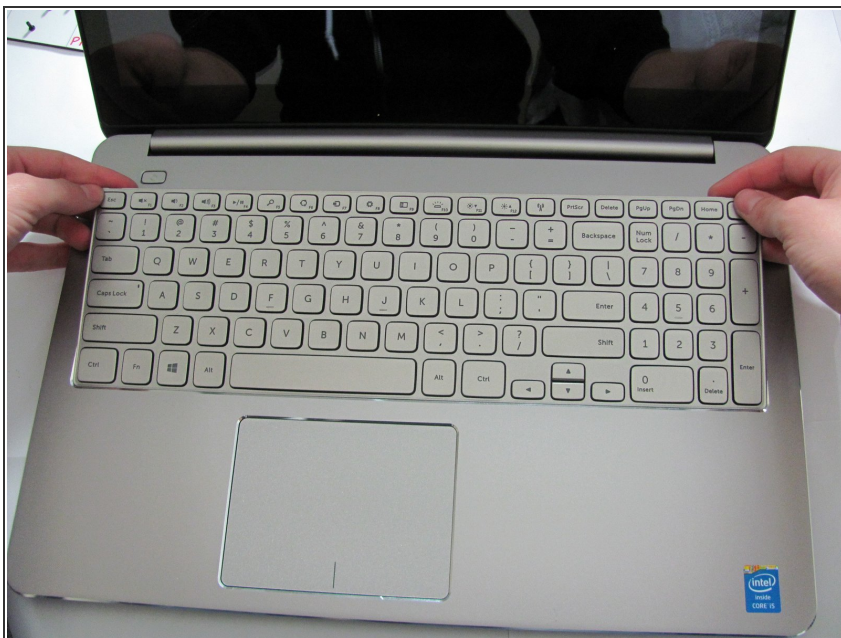
- Remove the single 5mm screw that connects the keyboard to the palm assembly with the Phillips head screwdriver.

Step 7



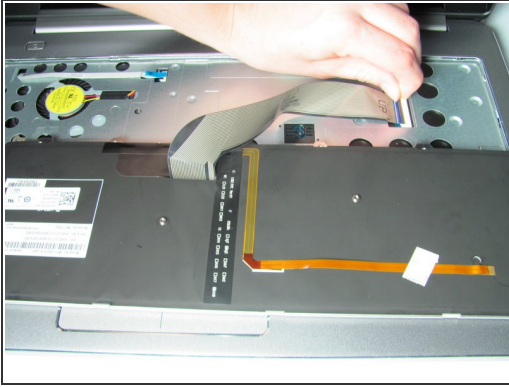
- Flip over the computer and open the display as far as it can go.
- Use the spudger to remove the keyboard from the palm assembly.

Step 8



- Gently flip over the keyboard and place it on the palm rest assembly.
- Lift the connector latches and disconnect the keyboard and the keyboard back-light cables.

Step 9



- Take the keyboard off the palm rest assembly.

To reassemble your device, follow these instructions in reverse order.