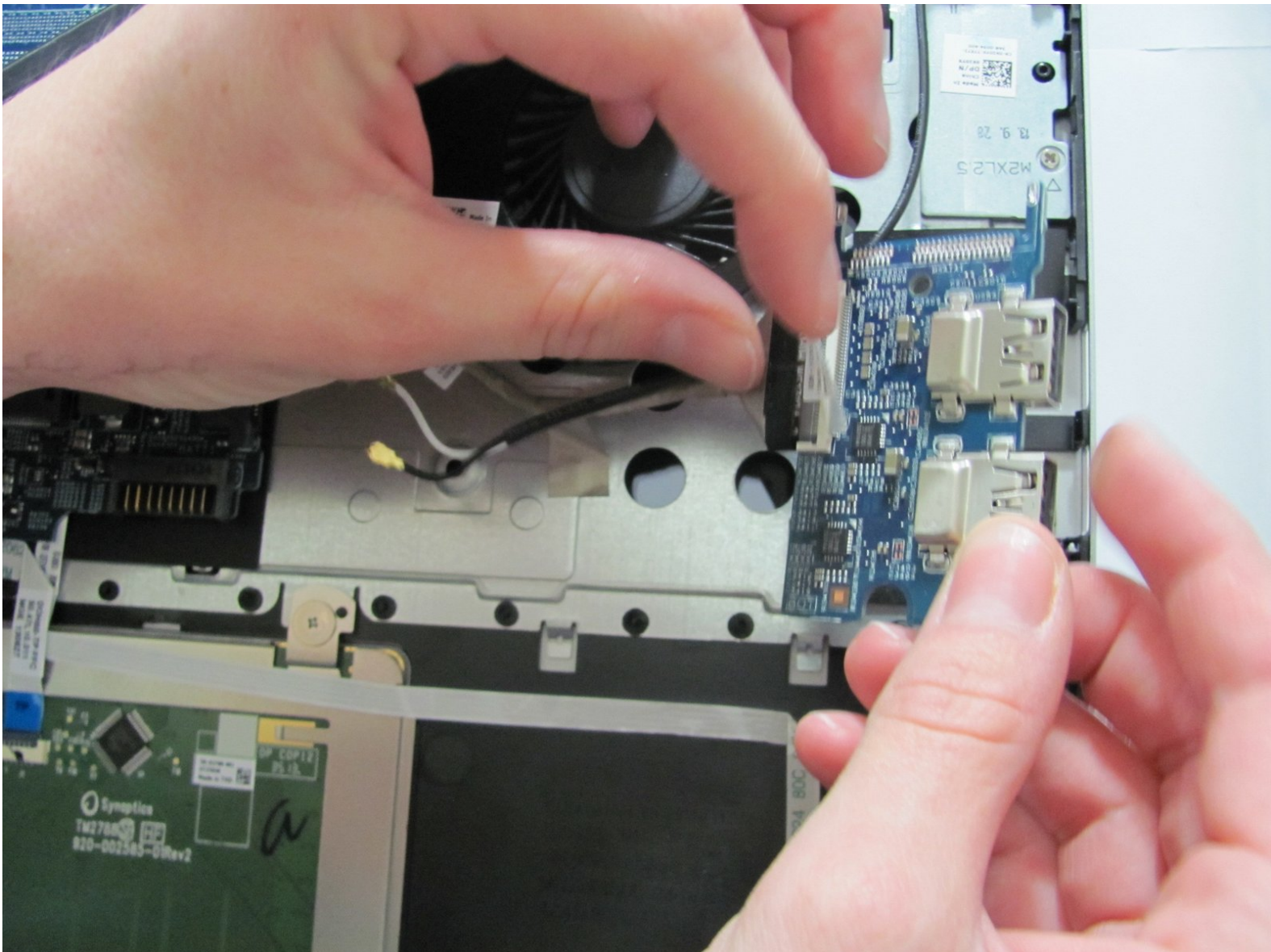




# Dell Inspiron 15-7537 USB Board Replacement

This guide shows you how to remove and replace the USB board.

Written By: Jean Whitmore



---

## INTRODUCTION

Use this guide to replace you USB board if you have determined that it is no longer working.

---



### TOOLS:

- [Spudger](#) (1)
  - [Phillips #0 Screwdriver](#) (1)
-

## Step 1 — Bottom Case



- Make sure the display is closed. Then, flip the computer over so that you can see the bottom cover.
- Loosen the two 5 mm Phillips #0 on the upper edge of the cover.
- ⓘ These screws will stay captive to the case.



## Step 2



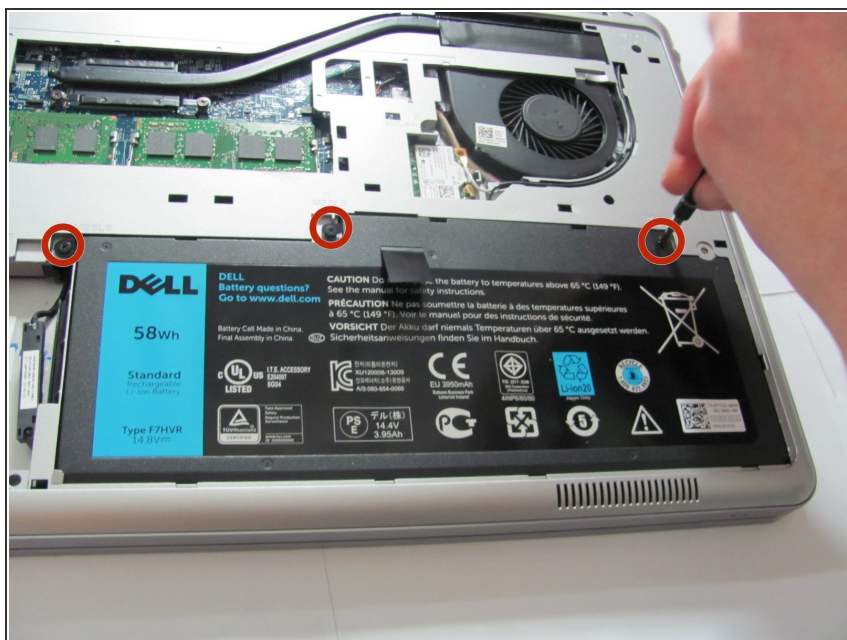
- Remove the two 5 mm interior screws that connect the cover to the assembly using the same Philips head screwdriver from the previous step.

## Step 3



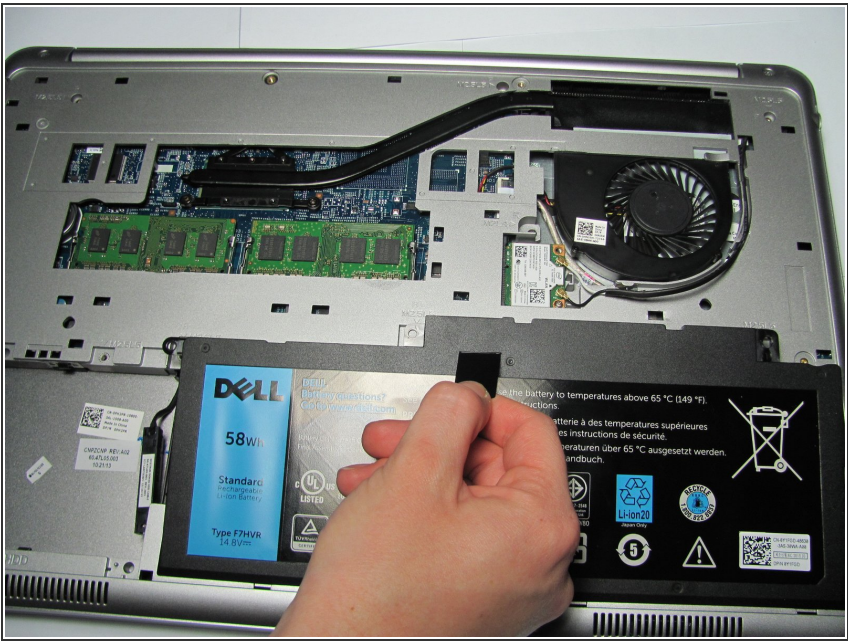
- Use a spudger to remove the base cover from the rest of bottom cover.

## Step 4 — Battery



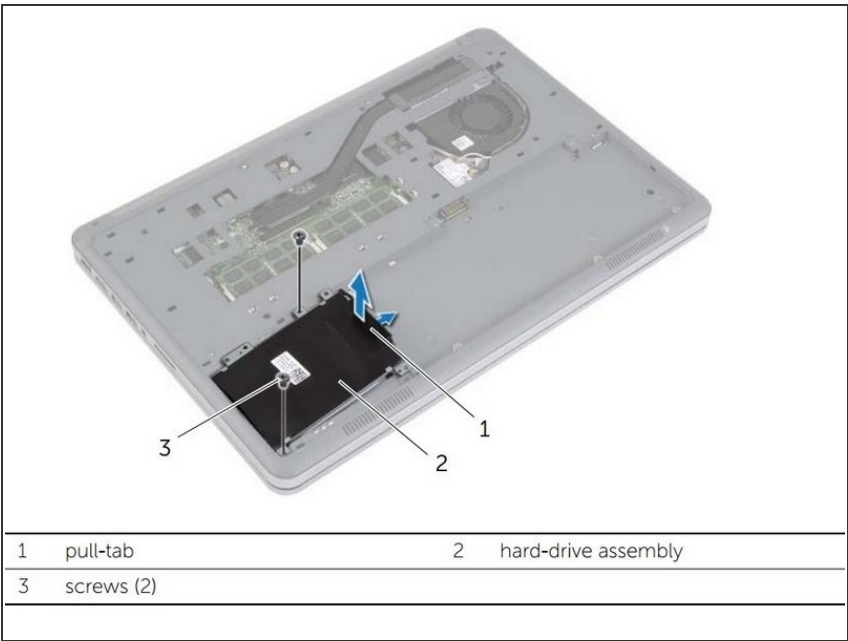
- Remove the three 5mm Phillips #0 screws that keep the battery connected to the computer.

Step 5



- ⚠ Ground the system board by turning over the computer, opening the display, and holding the power button down for about 5 seconds before proceeding.
- Using the pull tab on the battery, lift the battery out of the computer.

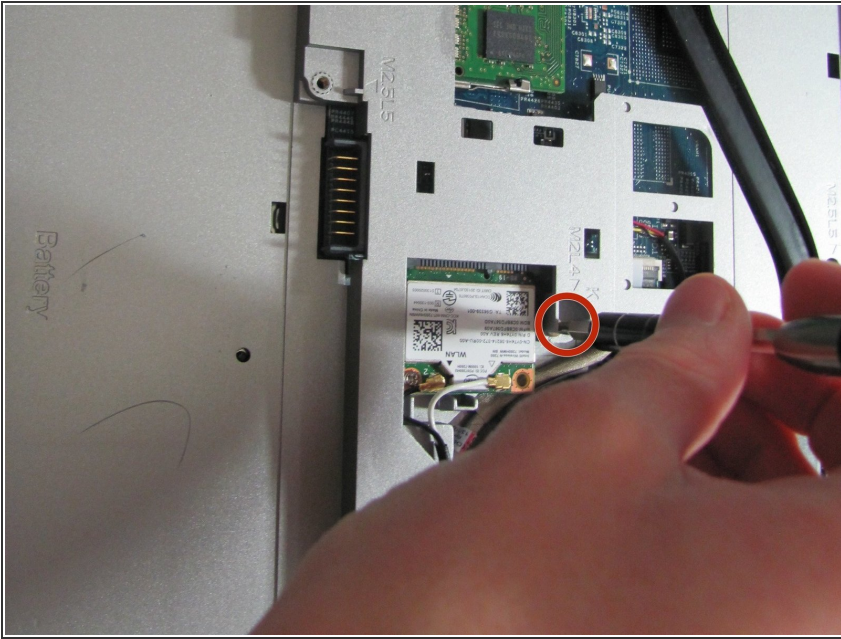
Step 6 — Hard Drive



- The model device did not come with a hard drive. However, you will need to remove the hard drive to proceed. Please remove the hard drive following the steps on [page 16 of the official Dell Inspiron 15-7537 manual](#).

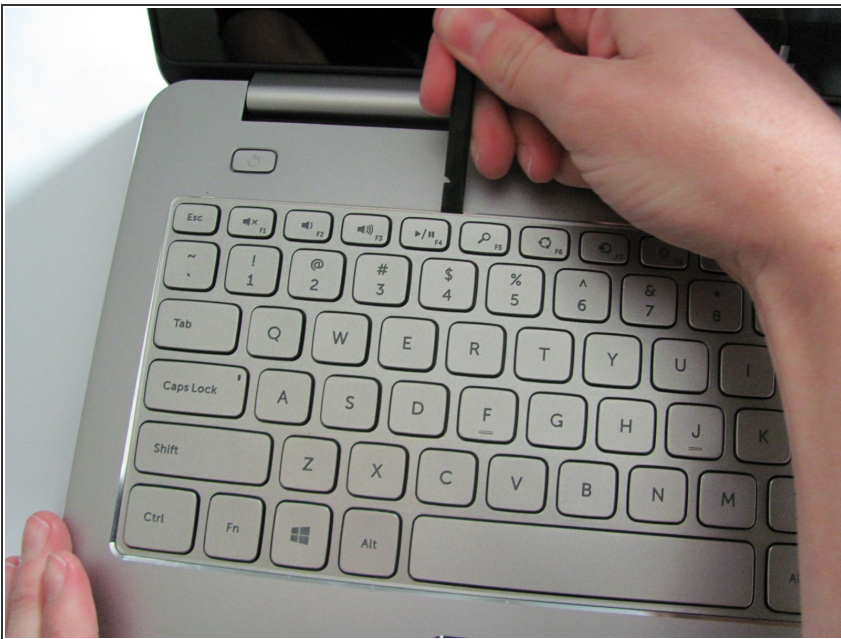


## Step 7 — Removing the Keyboard



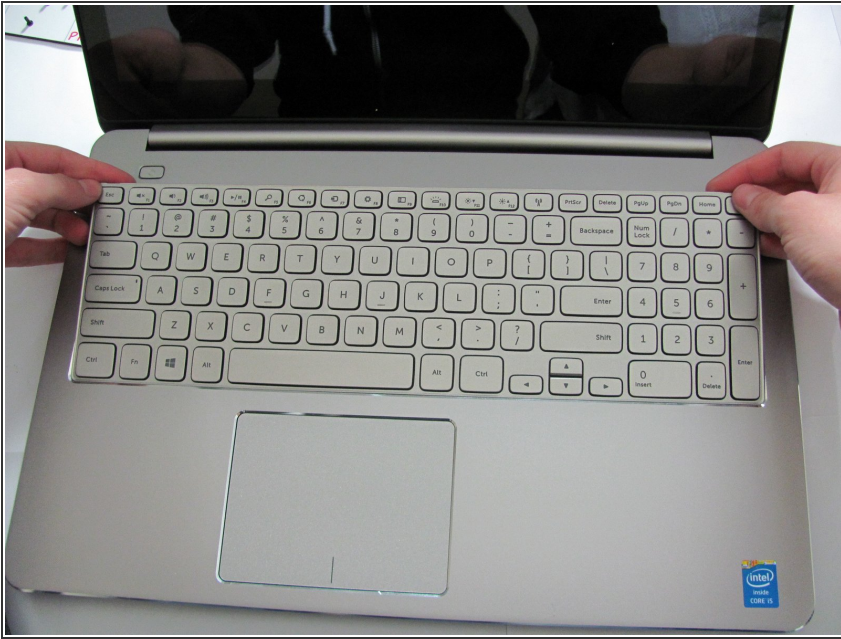
- Remove the single 5mm screw that connects the keyboard to the palm assembly with the Phillips head screwdriver.

## Step 8



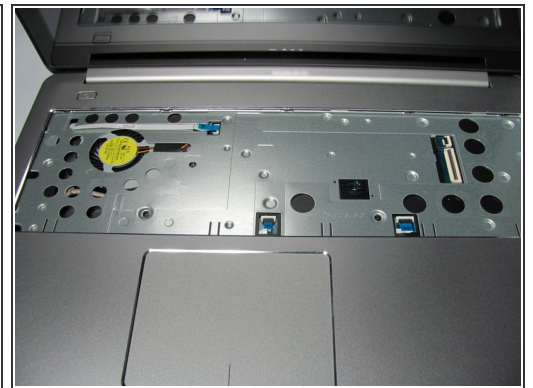
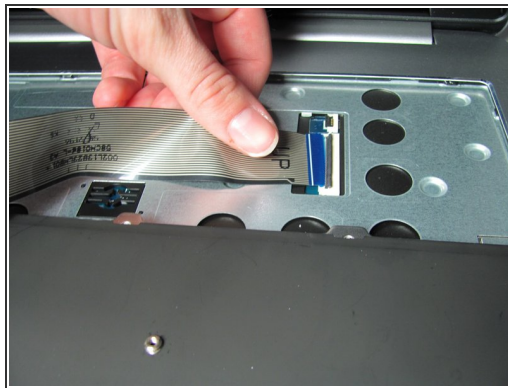
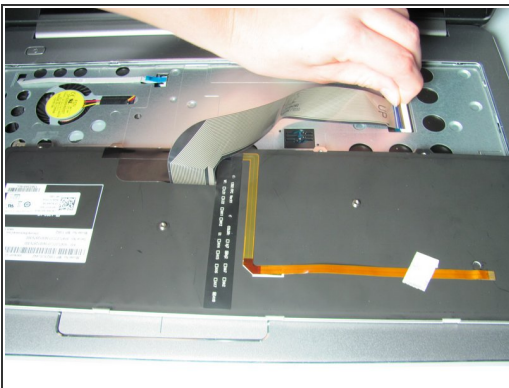
- Flip over the computer and open the display as far as it can go.
- Use the spudger to remove the keyboard from the palm assembly.

## Step 9



- Gently flip over the keyboard and place it on the palm rest assembly.
- Lift the connector latches and disconnect the keyboard and the keyboard back-light cables.

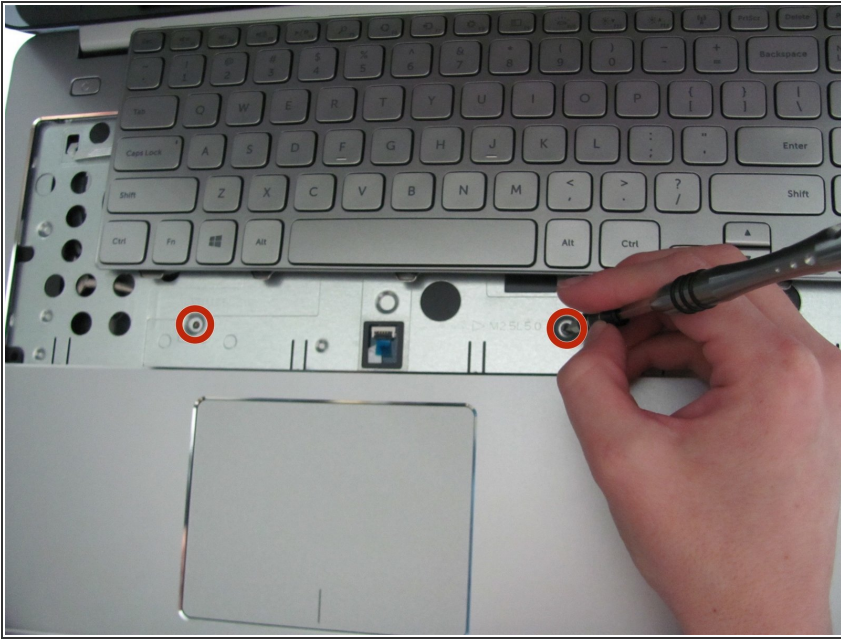
## Step 10



- Take the keyboard off the palm rest assembly.

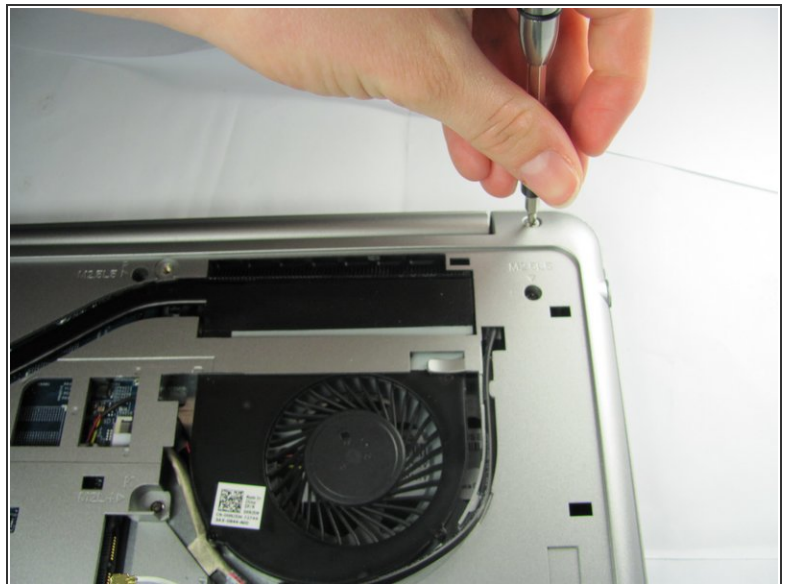


## Step 11 — Bottom Cover



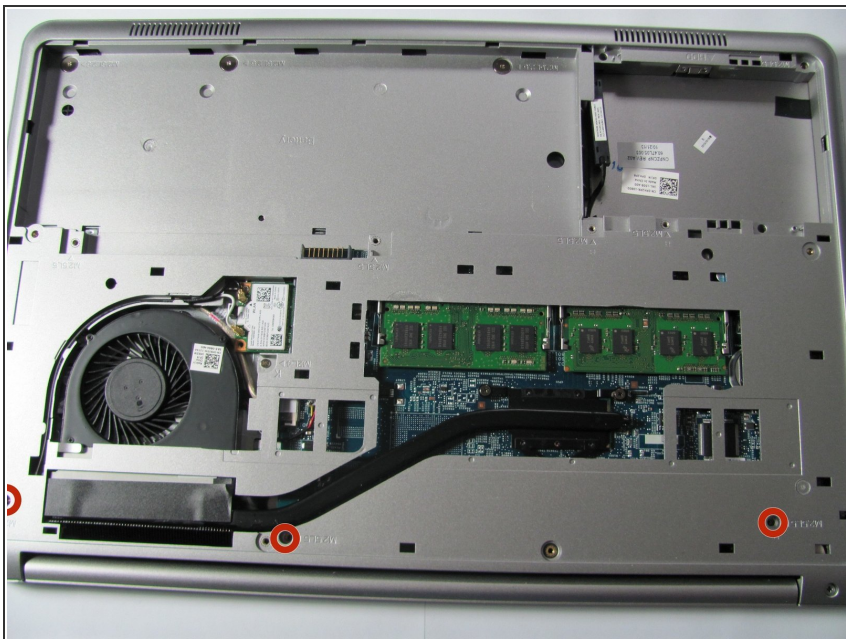
- Unscrew the two black 5 mm screws underneath the keyboard using a Phillips head screwdriver.

## Step 12



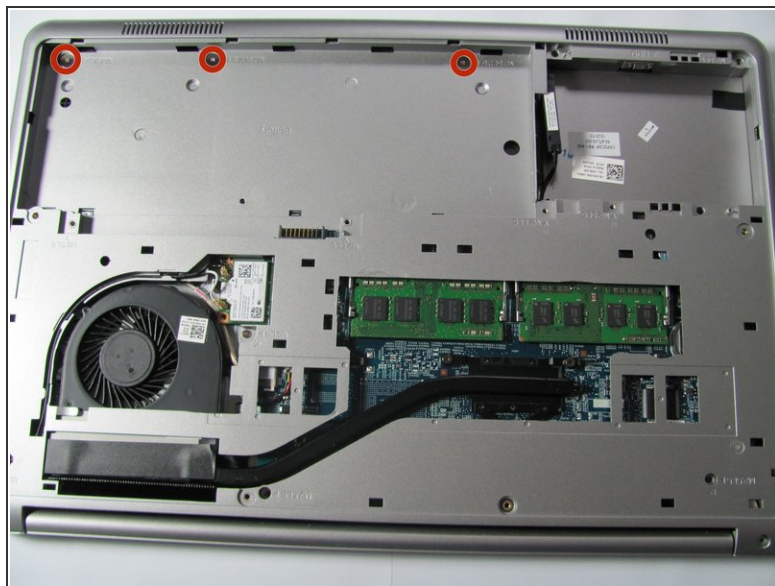
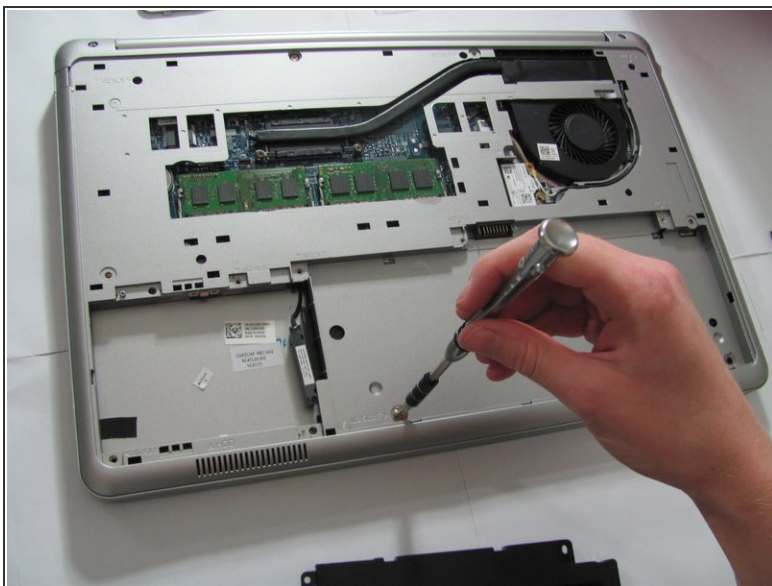
- Flip the computer and remove the two silver 5 mm screws on the corners of the base cover with the Phillips head screwdriver.

## Step 13



- Unscrew the three black 5 mm screws with the Phillips head screwdriver.

## Step 14



- Remove the three silver 2 mm screws (with large flat circular heads) from where the battery was taken out with the Phillips head screwdriver.

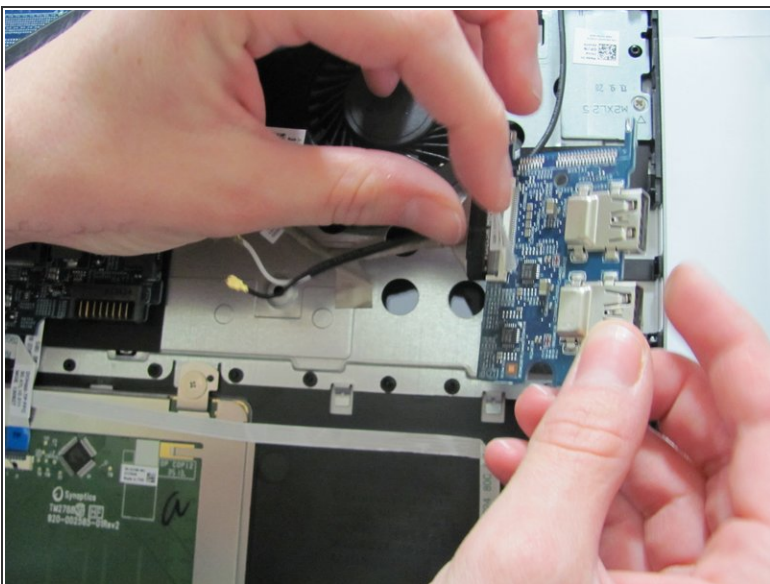


## Step 15



- Place a plastic spudger underneath the base cover and move it along the outside of the cover. Once the cover is disconnected lift it off the base cover.
- ❗ To fully take off the base cover the wires that connect to the WiFi card need to be pulled off and pulled through its hole in the base cover

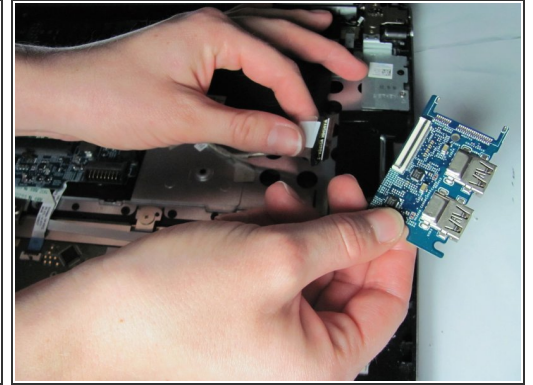
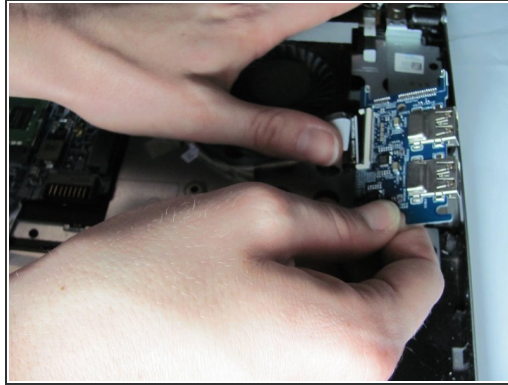
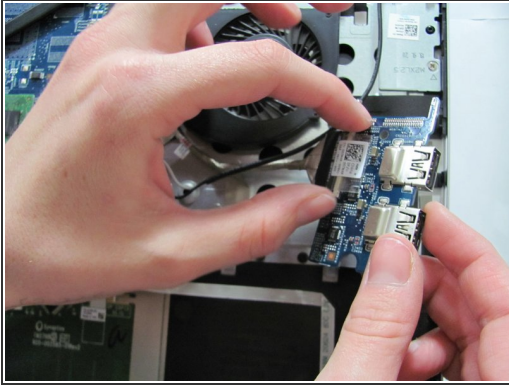
## Step 16 — USB Board



- Pull back the tape that is securing the cable to the USB board.



## Step 17



- Lift the black latch and remove the USB cable from the USB board.

To reassemble your device, follow these instructions in reverse order.