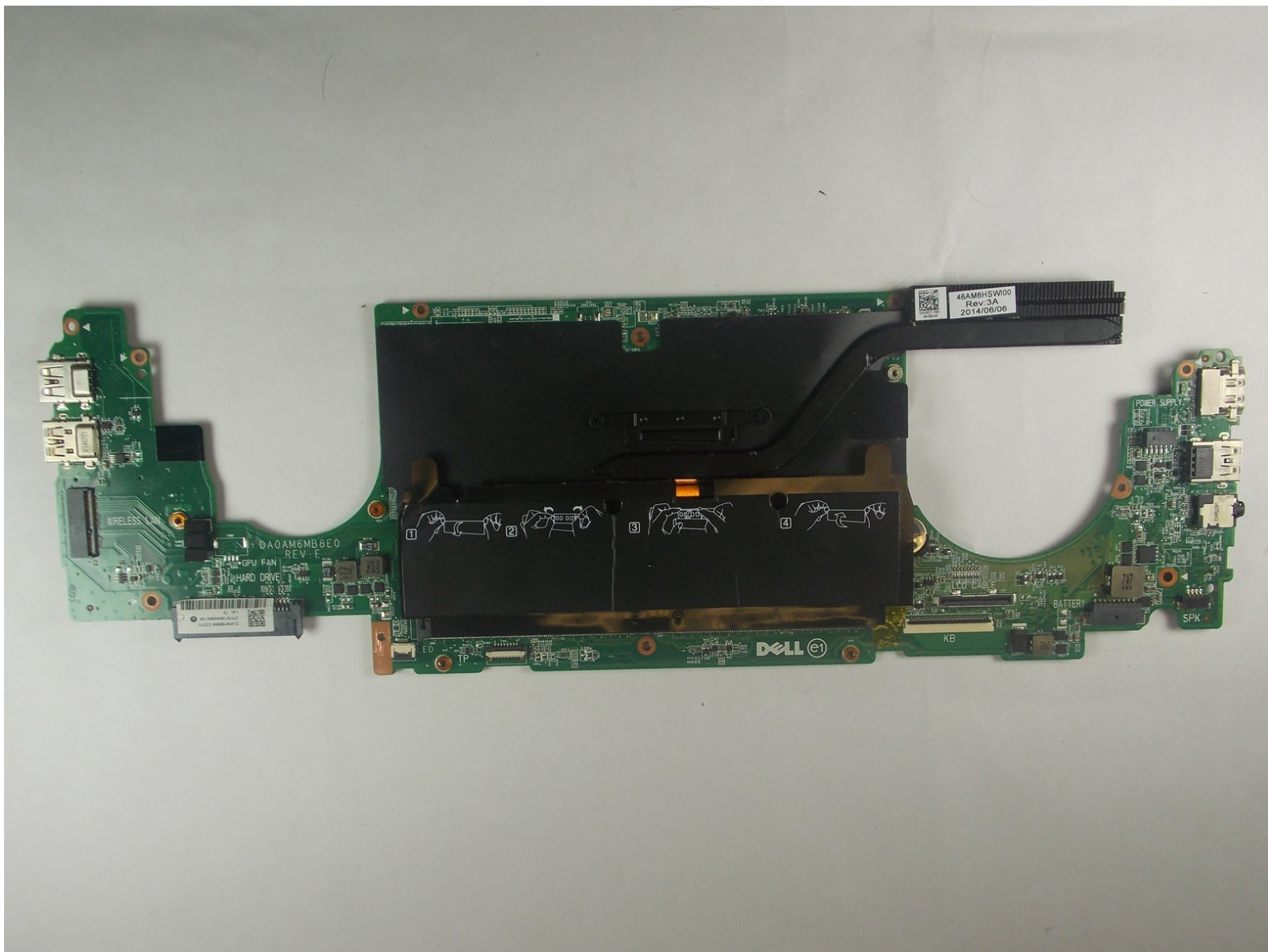




# Dell Inspiron 15-7547 Motherboard Replacement

Use this guide to replace the motherboard on a Dell Inspiron 15-7547.

Written By: Kevin Smith



---

## INTRODUCTION

Use this guide to remove the motherboard on a Dell Inspiron 15-7547.



### TOOLS:

- [Spudger](#) (1)
  - [Phillips #0 Screwdriver](#) (1)
-

## Step 1 — Bottom Cover



- Close the display and flip the laptop on its back.
- Loosen the ten 5.0 mm-long Phillips #0 screws.
  - The four screws marked with orange will remain captive to the cover.

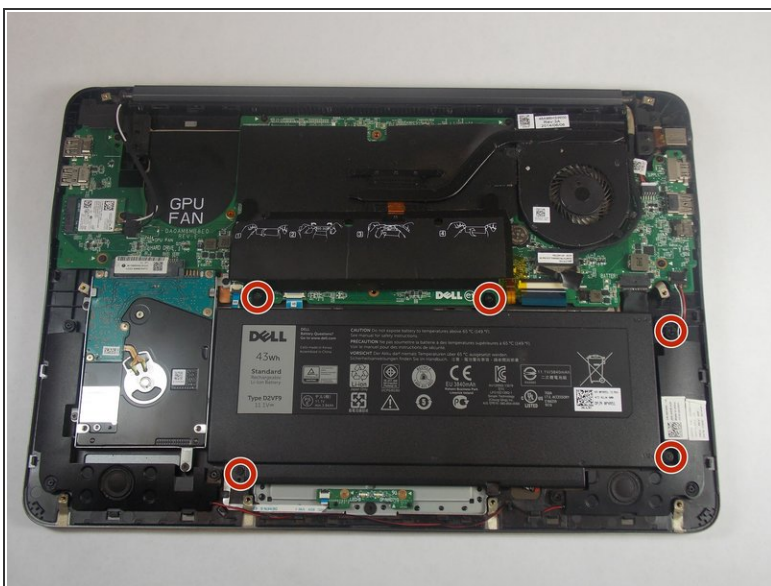
## Step 2



- Pry the cover open with a plastic spudger and remove it.



## Step 3 — Battery



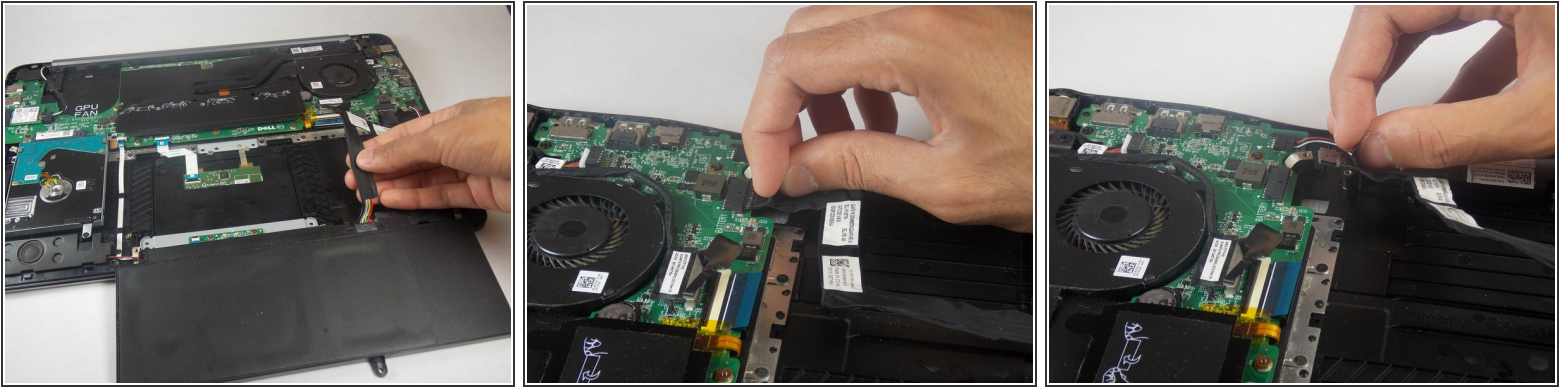
- Remove the five 5.0 mm-long Philips #0 screws that connect the battery to the case.

## Step 4



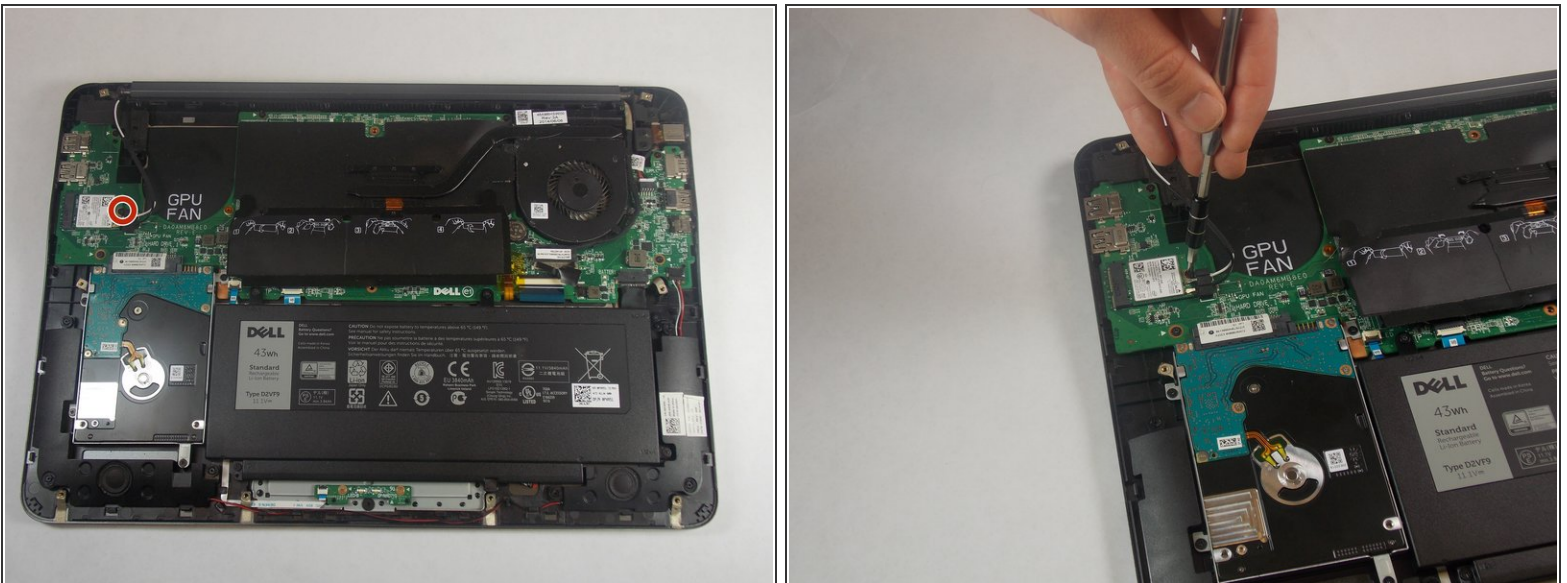
- Lift the battery out of the case.

## Step 5



- Disconnect the battery using the pull tab to pull towards the front of the chassis.
- ❗ Most of the cable is attached to the case with adhesive, which may cause slight resistance.

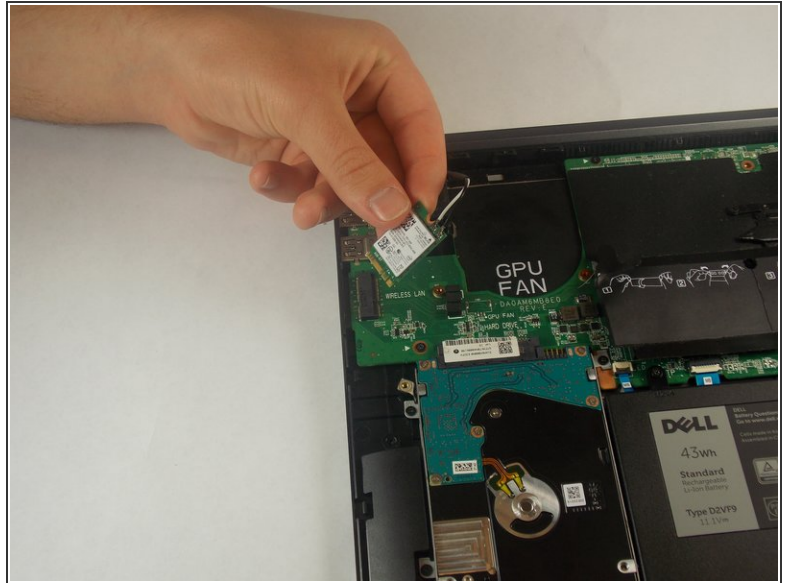
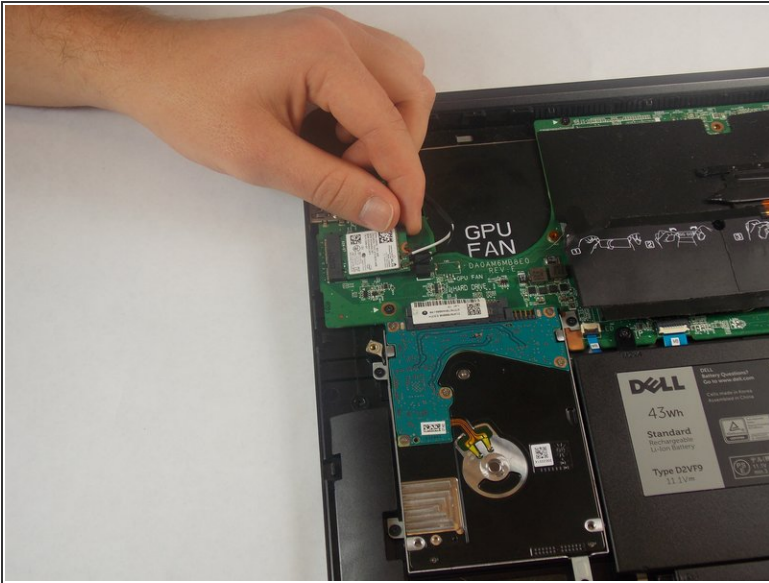
## Step 6 — WiFi Card



- Remove the 3.0 mm-long Philips #0 screw at the end of the Wifi-Card

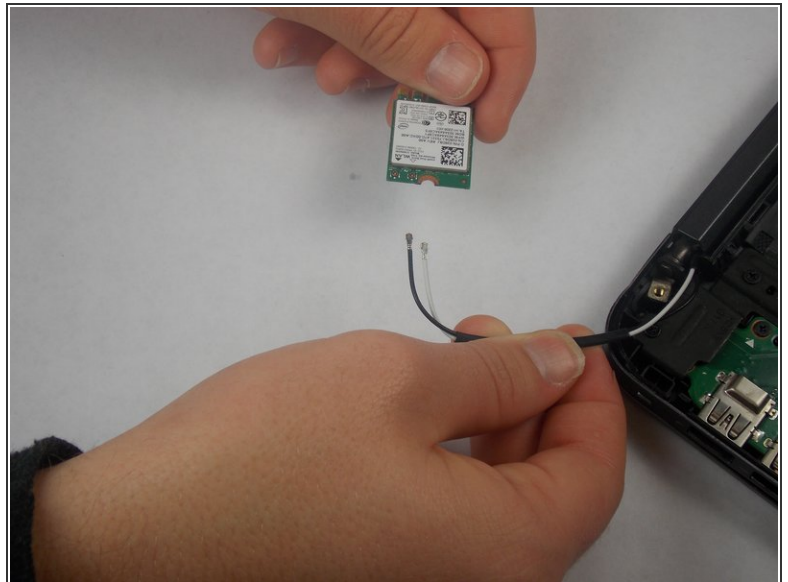
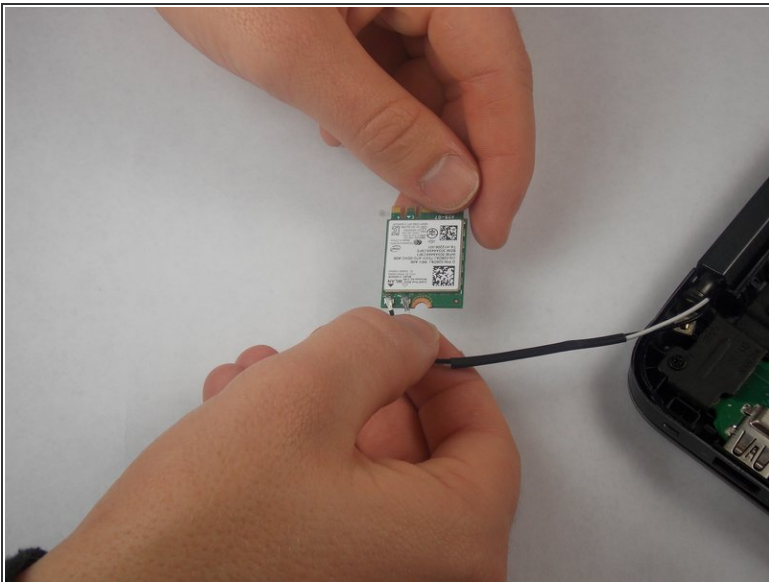


## Step 7



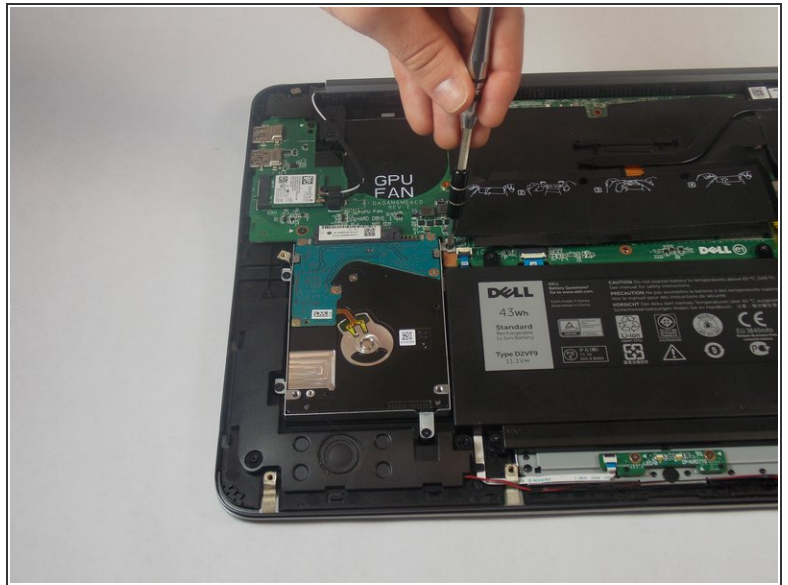
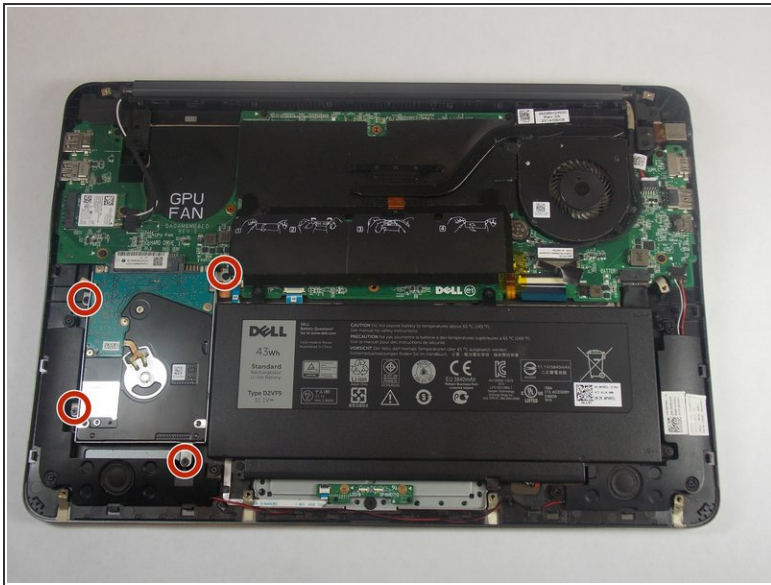
- Remove the Wifi-Card from its socket by pulling away and up from the connector.

## Step 8



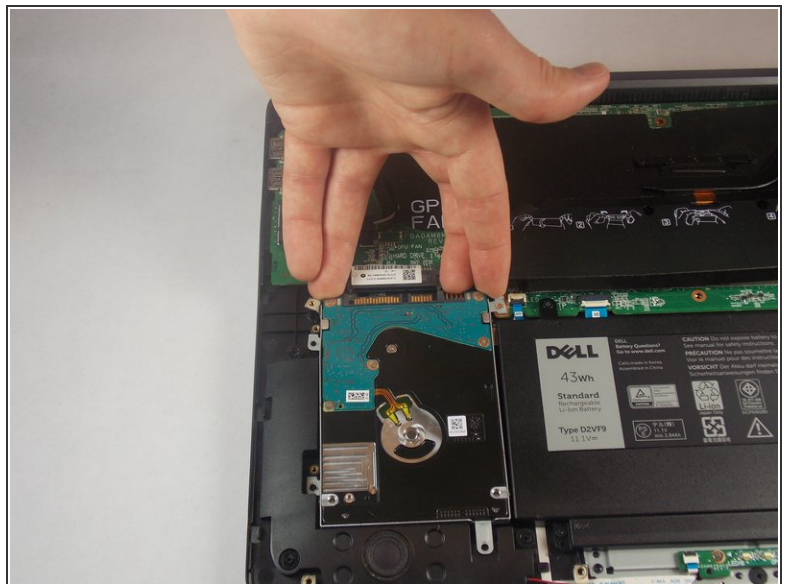
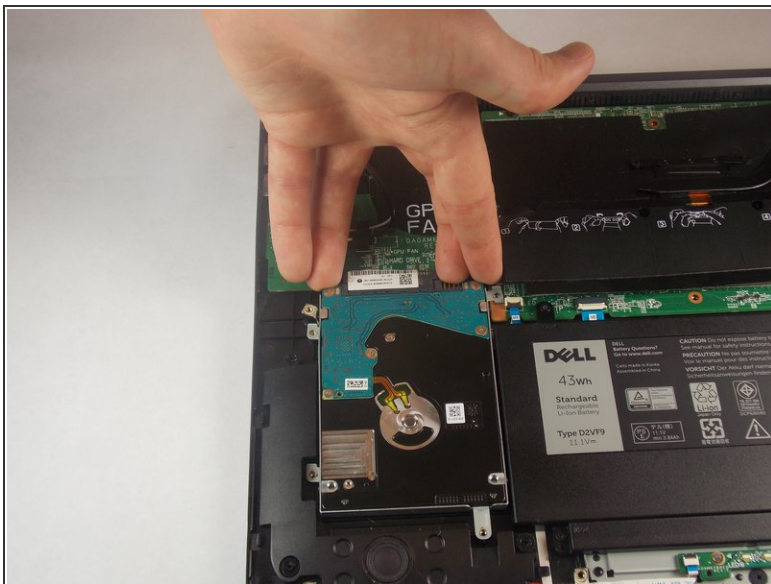
- Disconnect the white and black cables from the Wifi-Card.
- ⓘ Make a note of which wire goes where for reconnecting them to the replacement card.

## Step 9 — Hard Drive



- Remove the four 5.0 mm-long Philips #0 screws connecting the hard drive to the chassis.

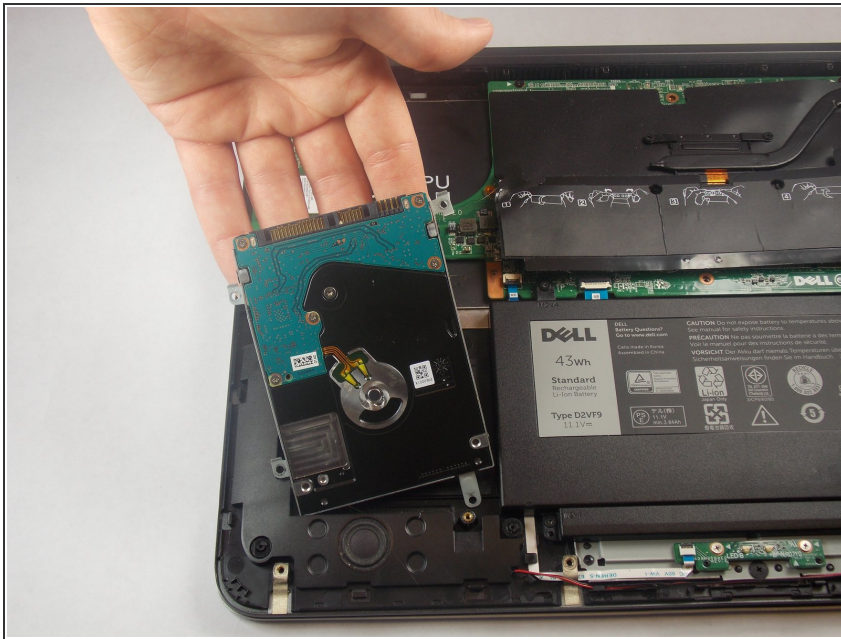
## Step 10



- Disconnect the hard drive from the motherboard by placing your fingers at the back, and pulling forward towards the front of the chassis.

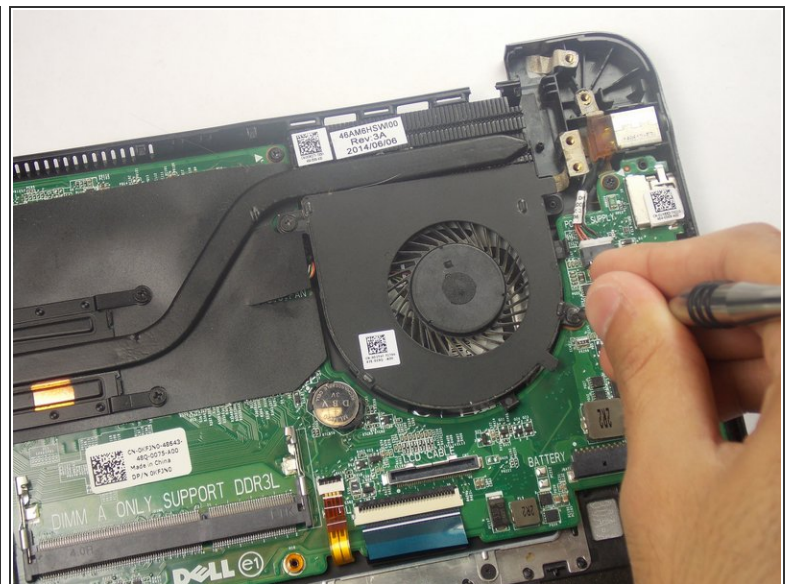


## Step 11



- Lift the hard drive out of the chassis.

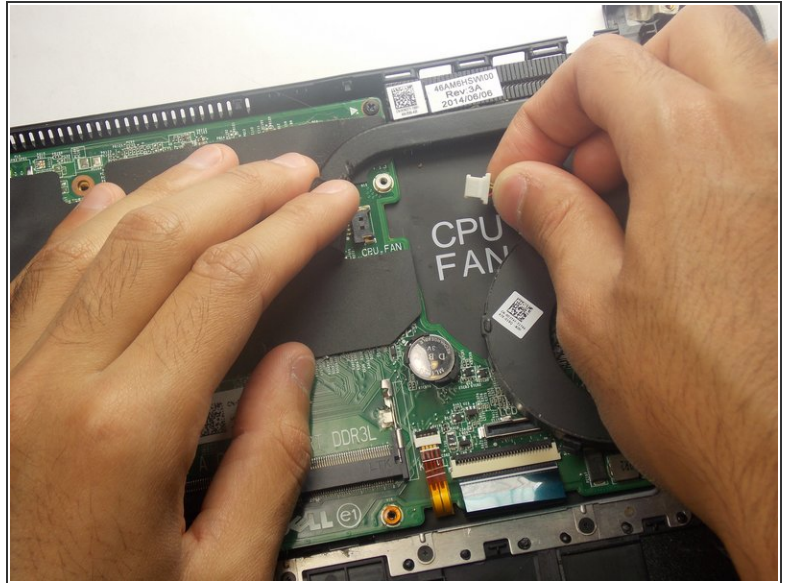
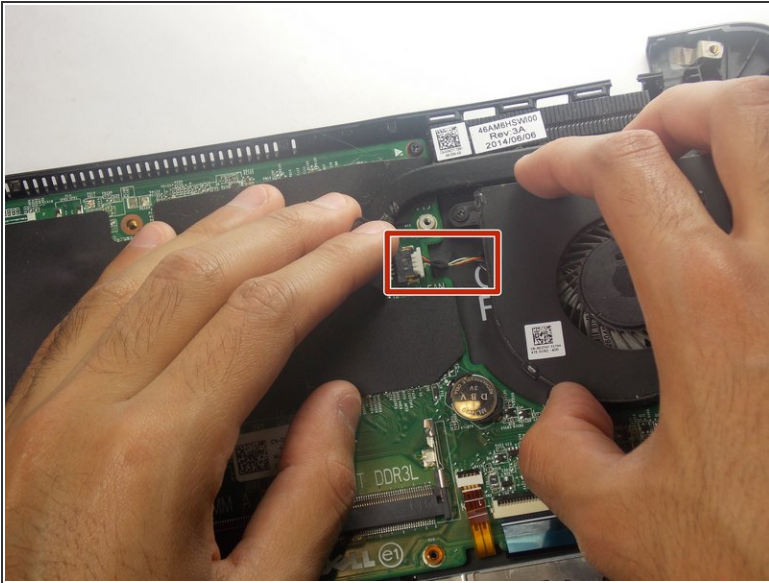
## Step 12 — CPU Fan



- Remove the two 5.0 mm-long Philips #0 screws from the fan.
- The screw marked in orange will remain captive to the fan.



## Step 13



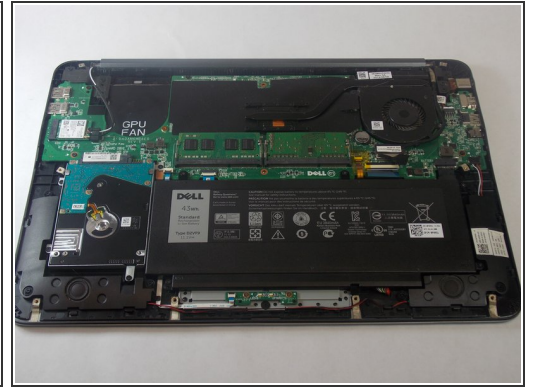
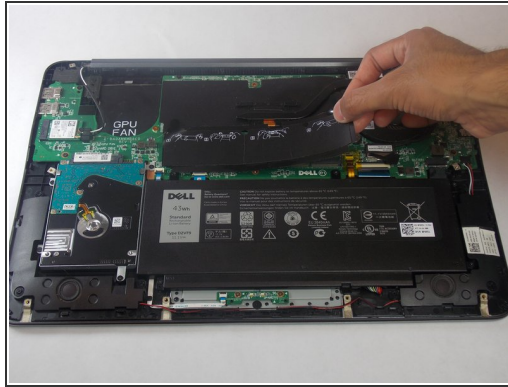
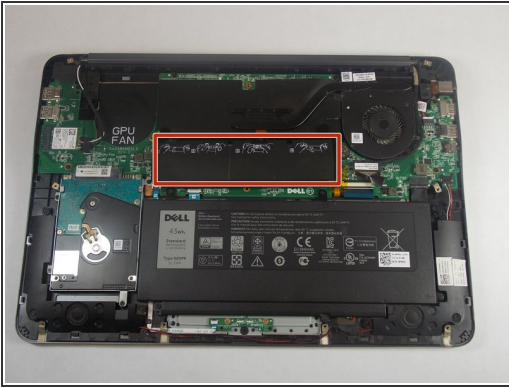
- Disconnect the wire that connects the fan to the motherboard. This can be found under the flap directly to the left of the fan.

## Step 14



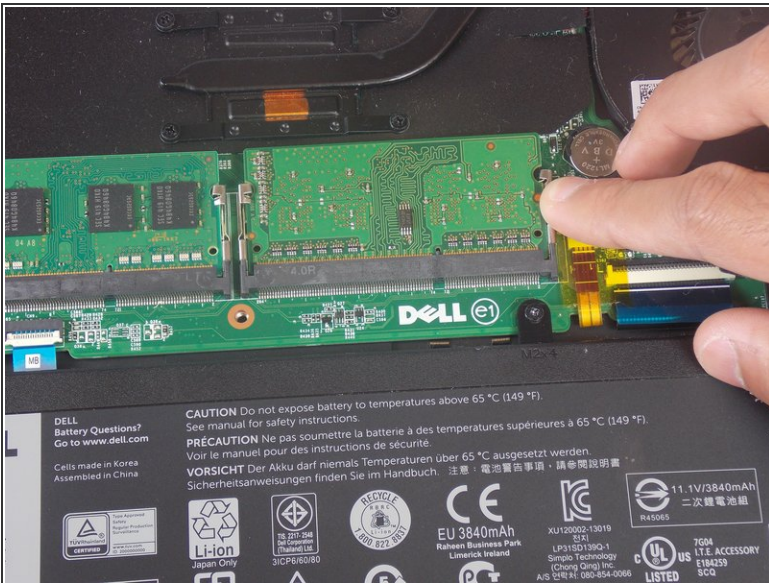
- Lift the fan out of the chassis.

## Step 15 — RAM



- Remove the plastic heat spreader that covers the RAM sticks.

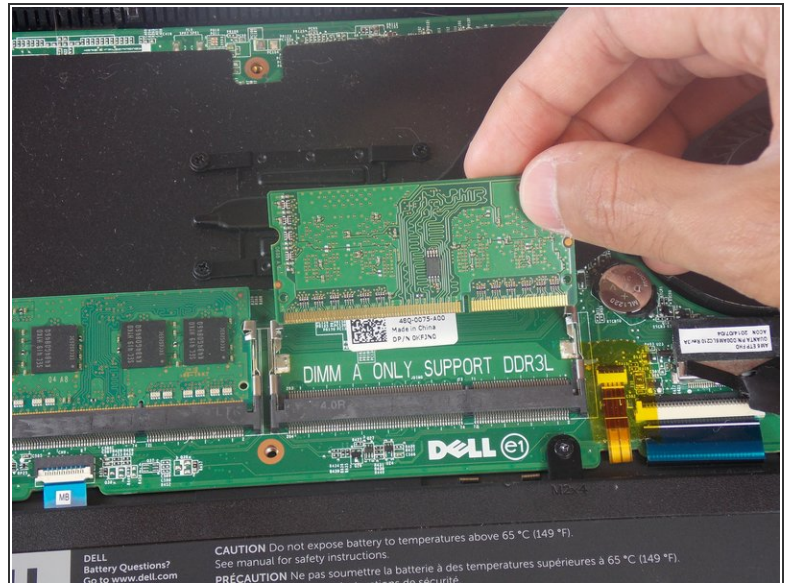
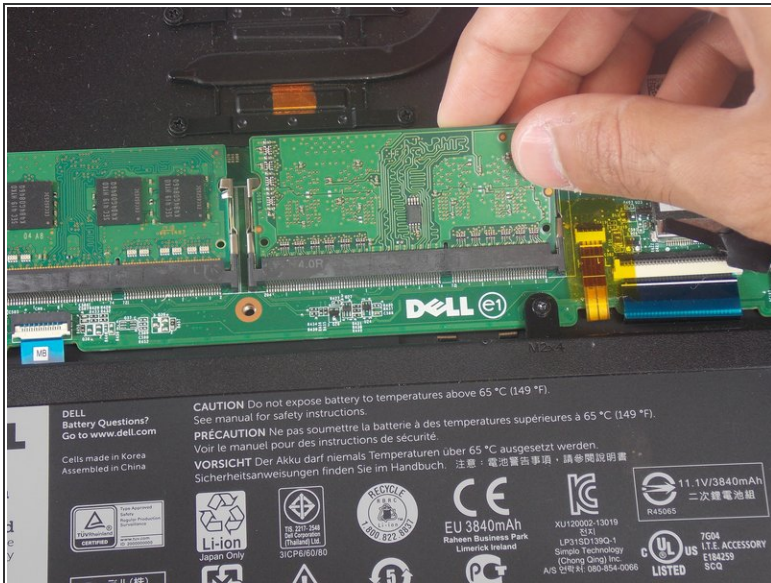
## Step 16



- Release the clamps on each side of the RAM sticks by pushing away from the center.
- ① When done properly the RAM stick should pop up.

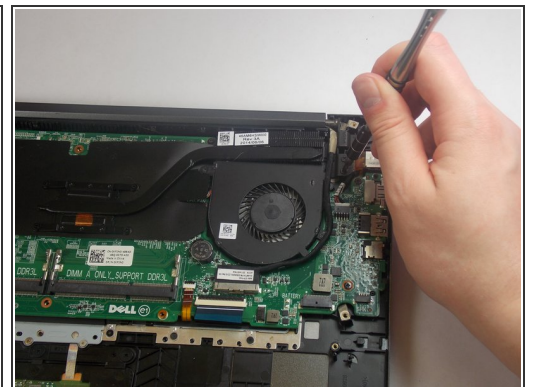
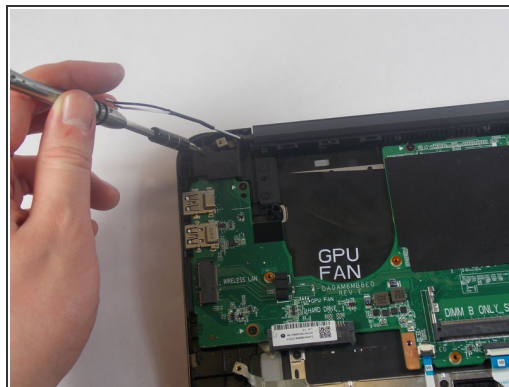


## Step 17



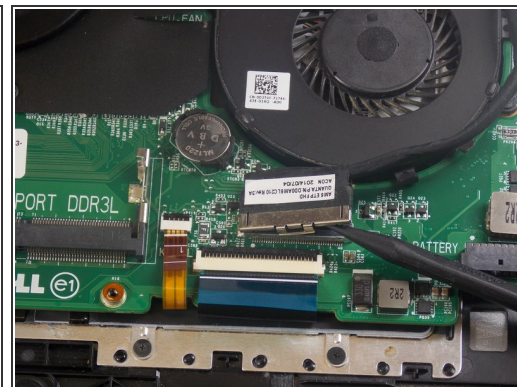
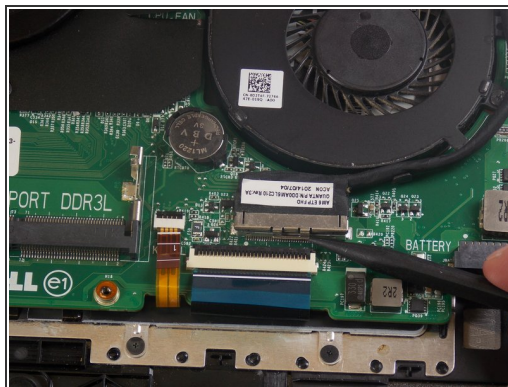
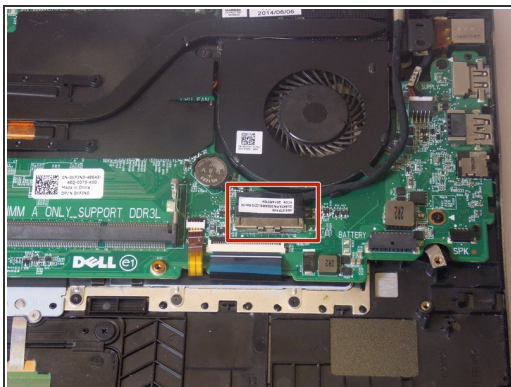
- Pull the RAM stick in a straight line out of the socket.

## Step 18 — LCD Assembly



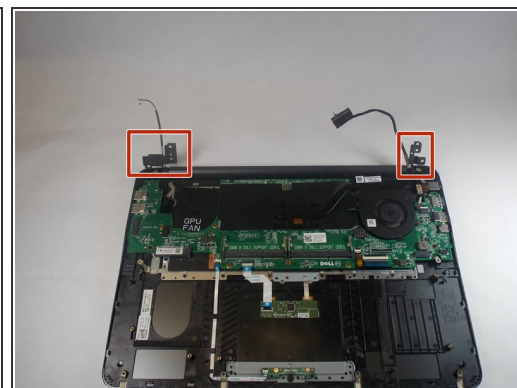
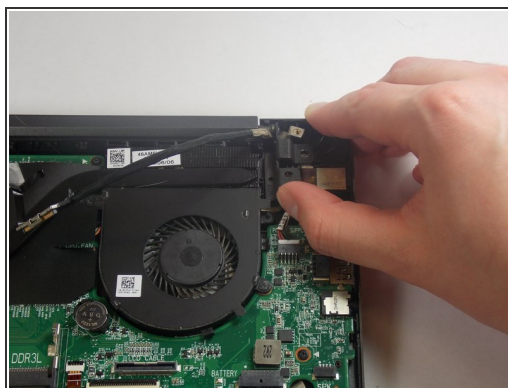
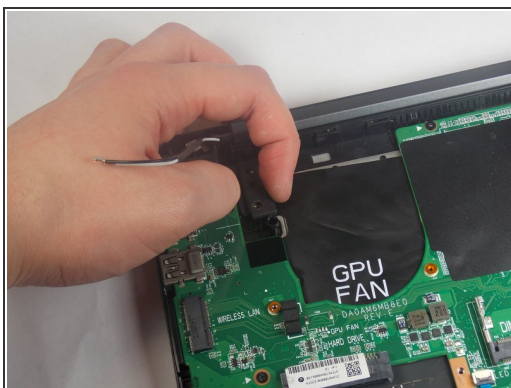
- Remove the six 7.0 mm-long Philips #0 screws that mount the hinges.

## Step 19



- Use a spudger to unlatch and unplug the display cable.
- ❗ There will be a notch on the side of the connector.

## Step 20



- Raise the left and right hinges.

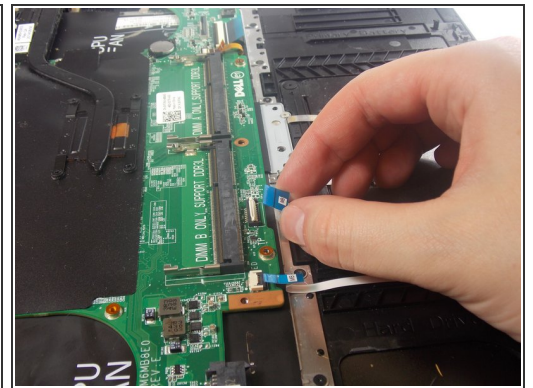
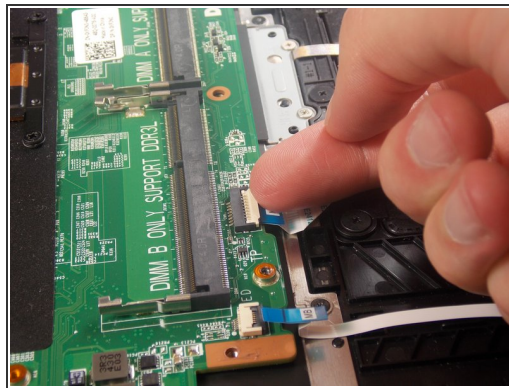
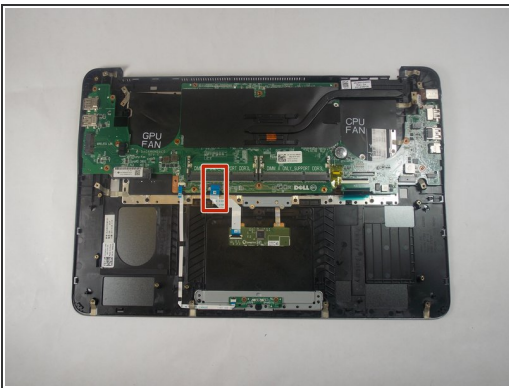


## Step 21



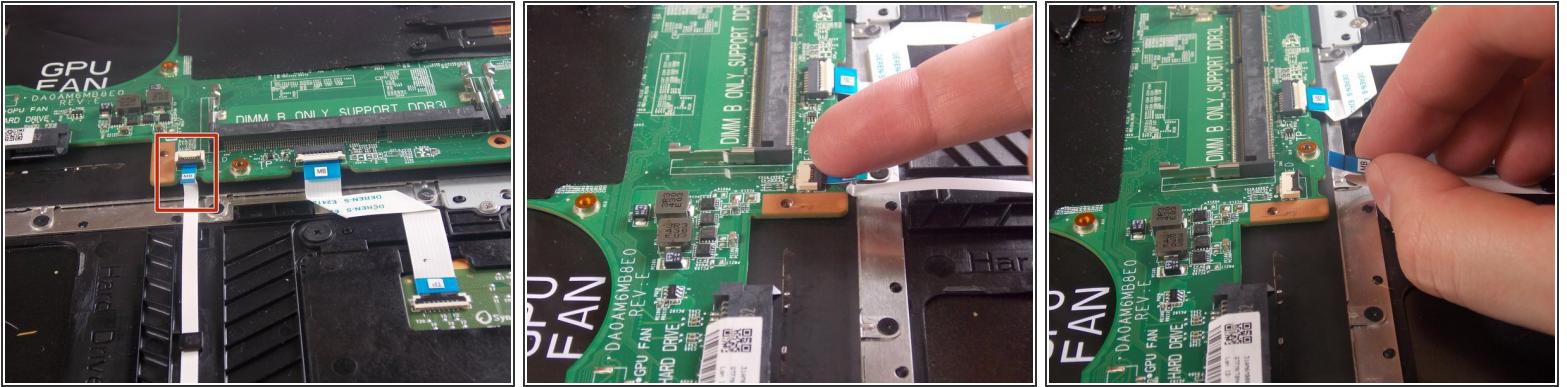
- Remove the LCD display assembly from the laptop.

## Step 22 — Motherboard



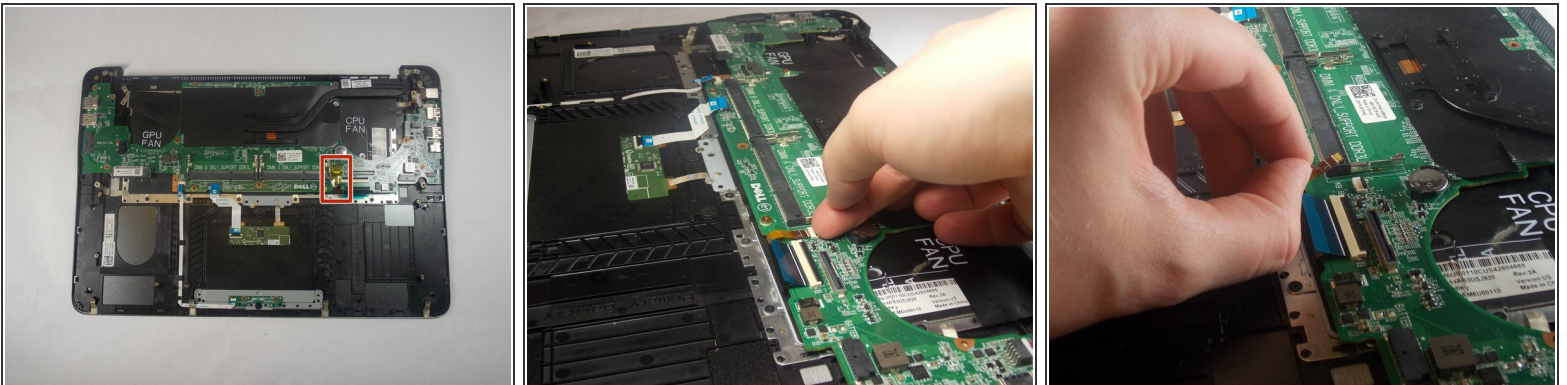
- Unlatch the ribbon cable by pulling the white release up.
  - ❗ If this proves to be difficult using your fingers, try a plastic spudger.
- Hold the blue flap and pull to unplug the cable.

## Step 23



- Unlatch black release on the ribbon cable.
- Hold the blue flap to unplug the cable.

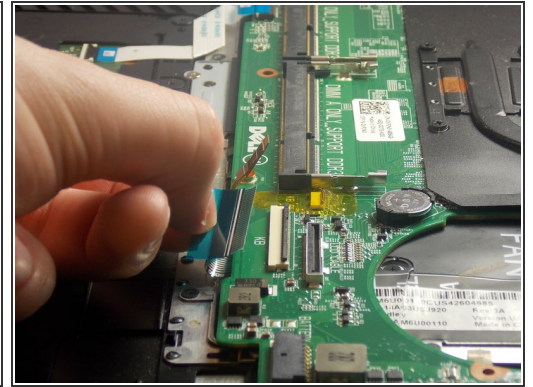
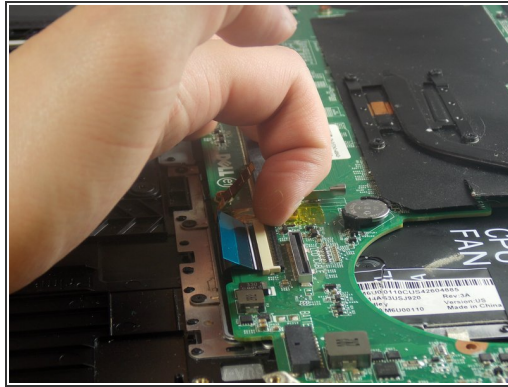
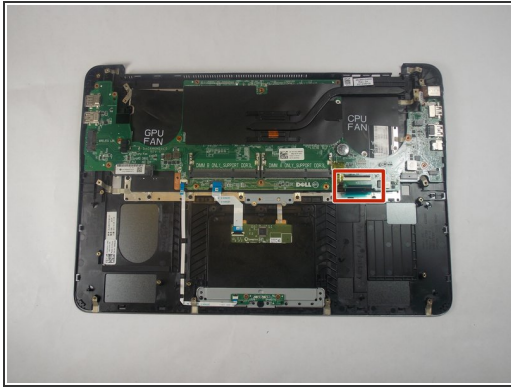
## Step 24



- Unlatch the ribbon cable by pulling the black release up.
- ❗ Unlike the others, this release is found at the back.
- Hold the flap and unplug the cable.

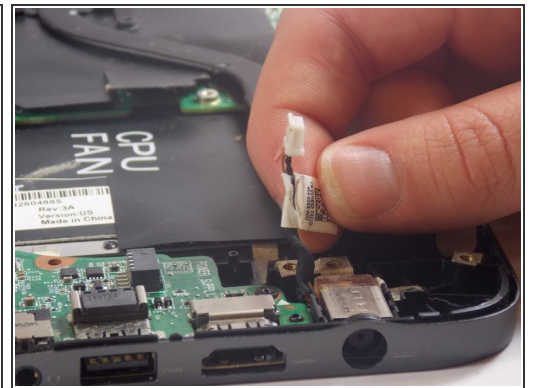
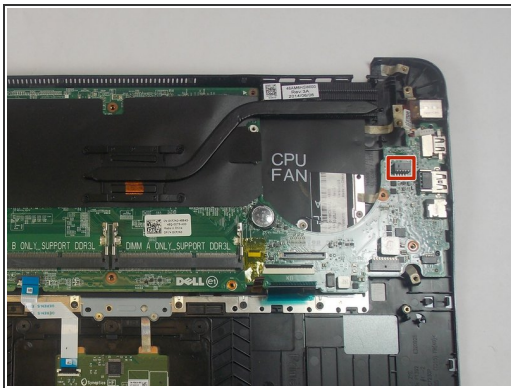


## Step 25



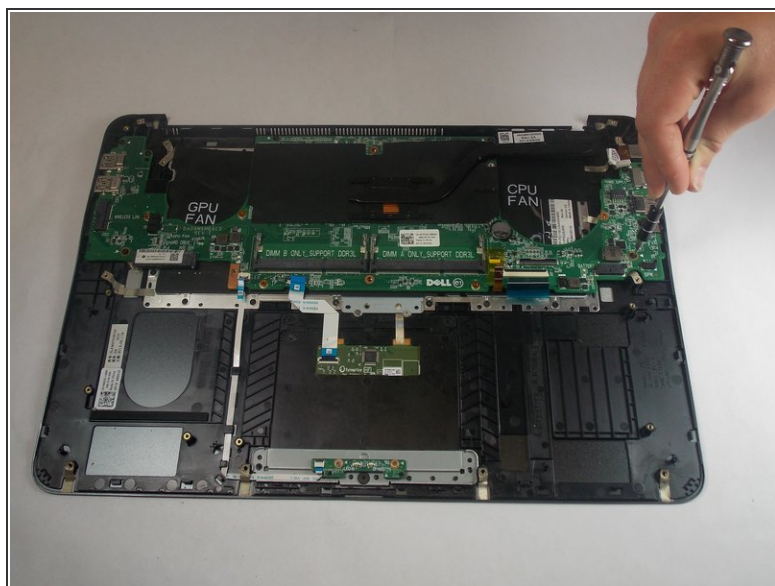
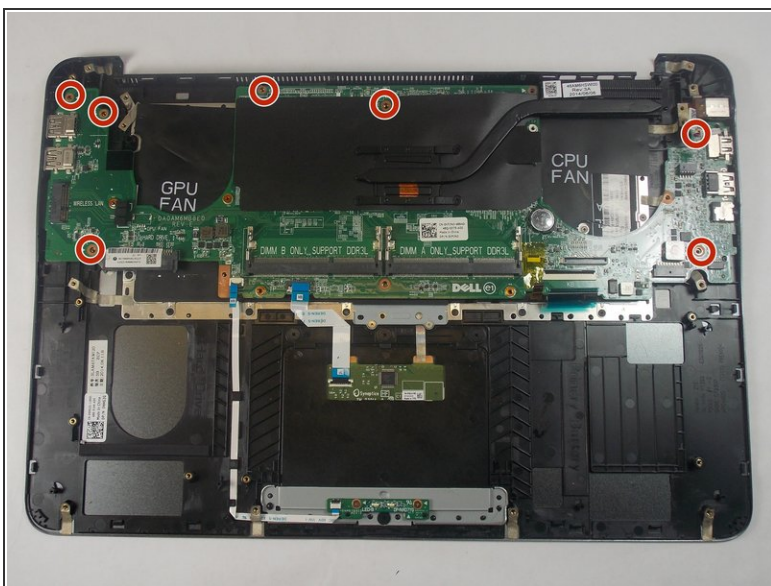
- Unlatch the ribbon cable by pulling the black release up.
- ❗ Unlike the others this release is found at back.
- Hold the blue flap and unplug the cable.

## Step 26



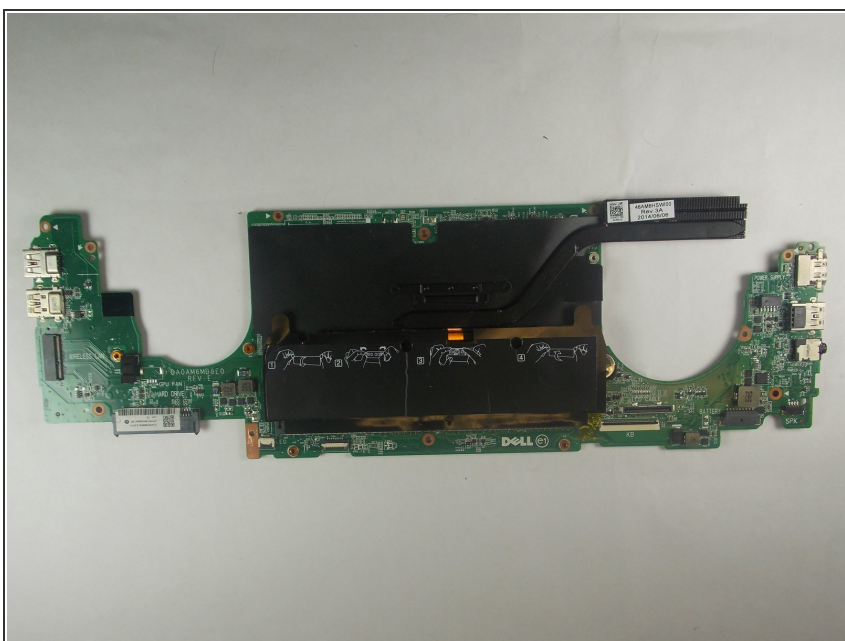
- Unplug the DC jack cable.

## Step 27



- Remove the seven 3.0 mm-long Philips #0 screws that secure the motherboard.

## Step 28



- Remove the motherboard from the laptop.

To reassemble your device, follow these instructions in reverse order.