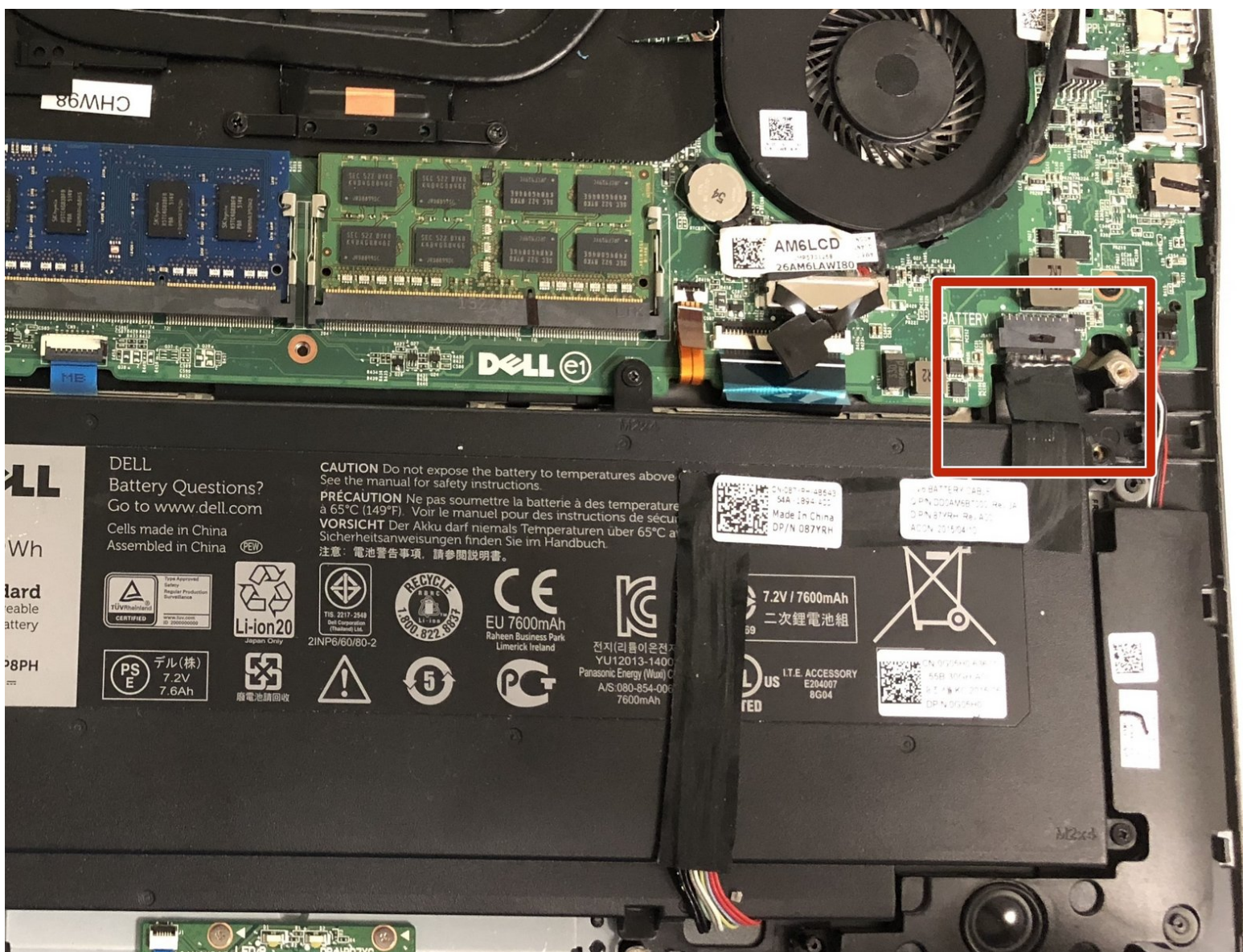




# Dell Inspiron 15-7548 Battery Replacement

Use this guide to replace the battery in your Dell inspiron 15-7548.

Written By: Christopher Fisher



---

## INTRODUCTION

This guide will walk you through the process of replacing a dead or damaged battery in your Dell Inspiron 15-7548.

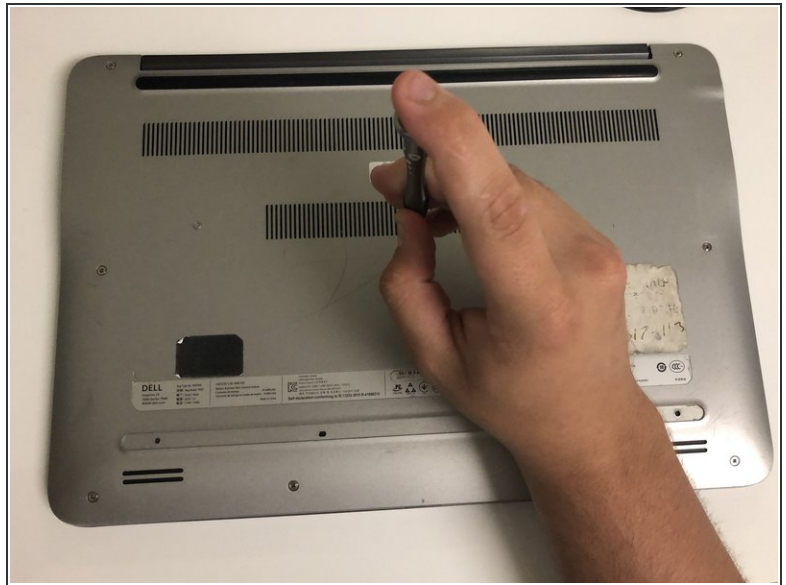
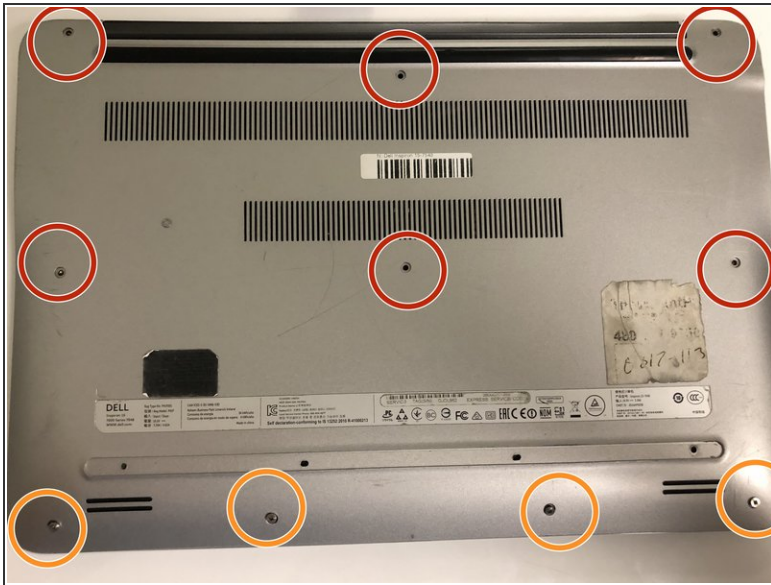
---



### TOOLS:

- [Spudger](#) (1)
  - [Phillips #1 Screwdriver](#) (1)
-

## Step 1 — Back Panel



- Unscrew the six 2.5x6mm screws and remove them using a Phillips #1 screwdriver.
- Loosen the four 2x3mm captive screws at the bottom.
- ⓘ The four screws on the bottom are captive screws and cannot be removed.

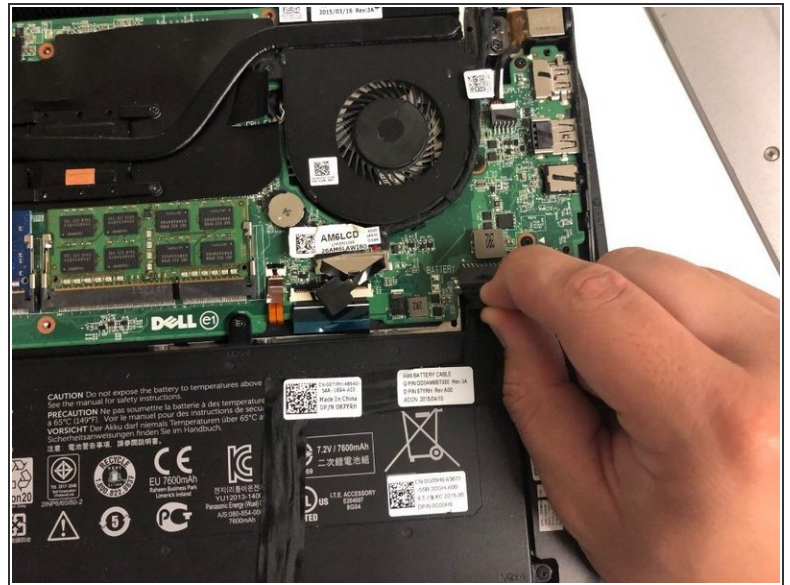
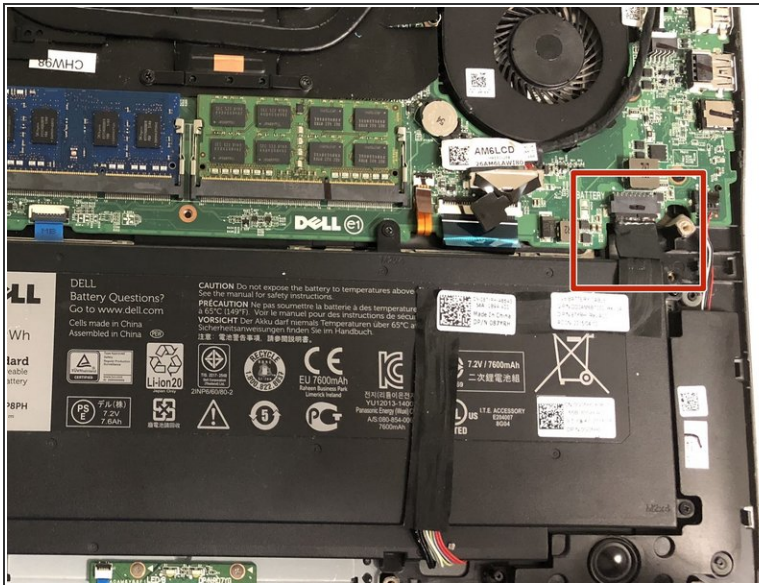
## Step 2



- Using the flat head side of the spudger separate the the back panel from the rest of the laptop.
- ⚠ When separating the bottom and right side of the case do not insert the spudger more than half an inch.

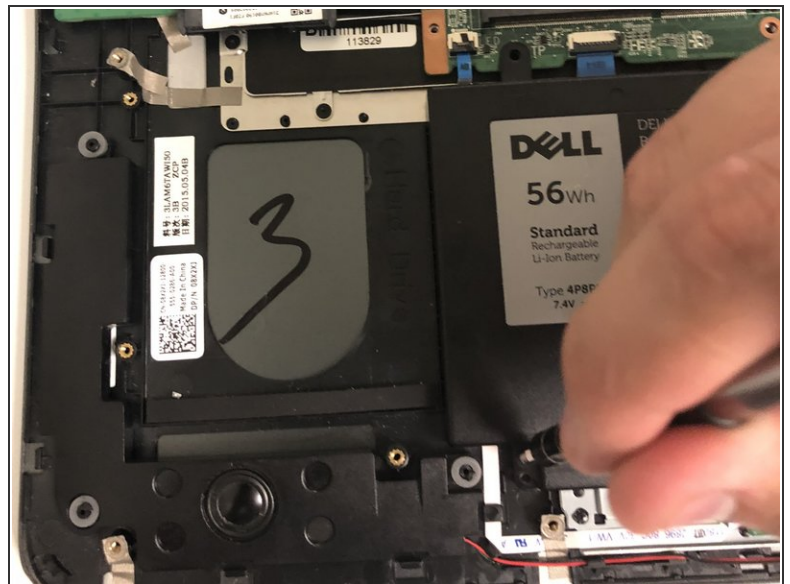
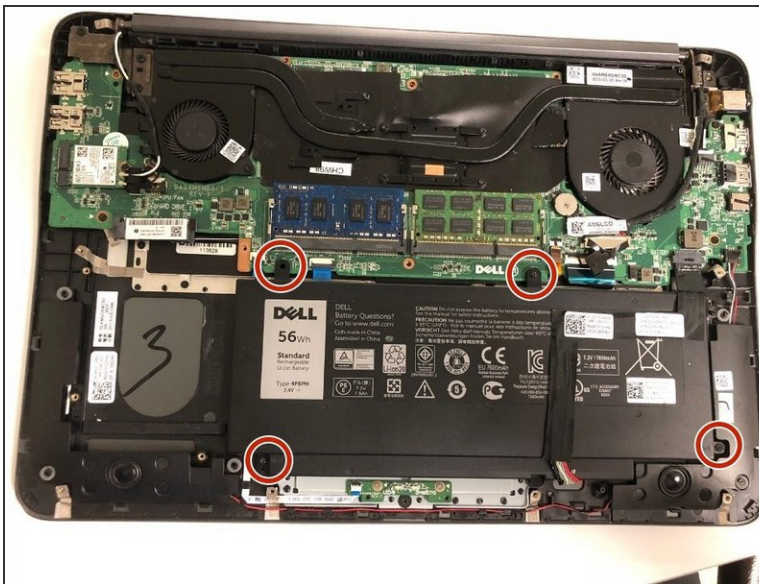


## Step 3 — Battery



- Disconnect the battery from the motherboard by pulling the black tab attached to the cable.

## Step 4



- Remove the four 2.5x6mm screws using a Phillips #1 screwdriver.

To reassemble your device, follow these instructions in reverse order.