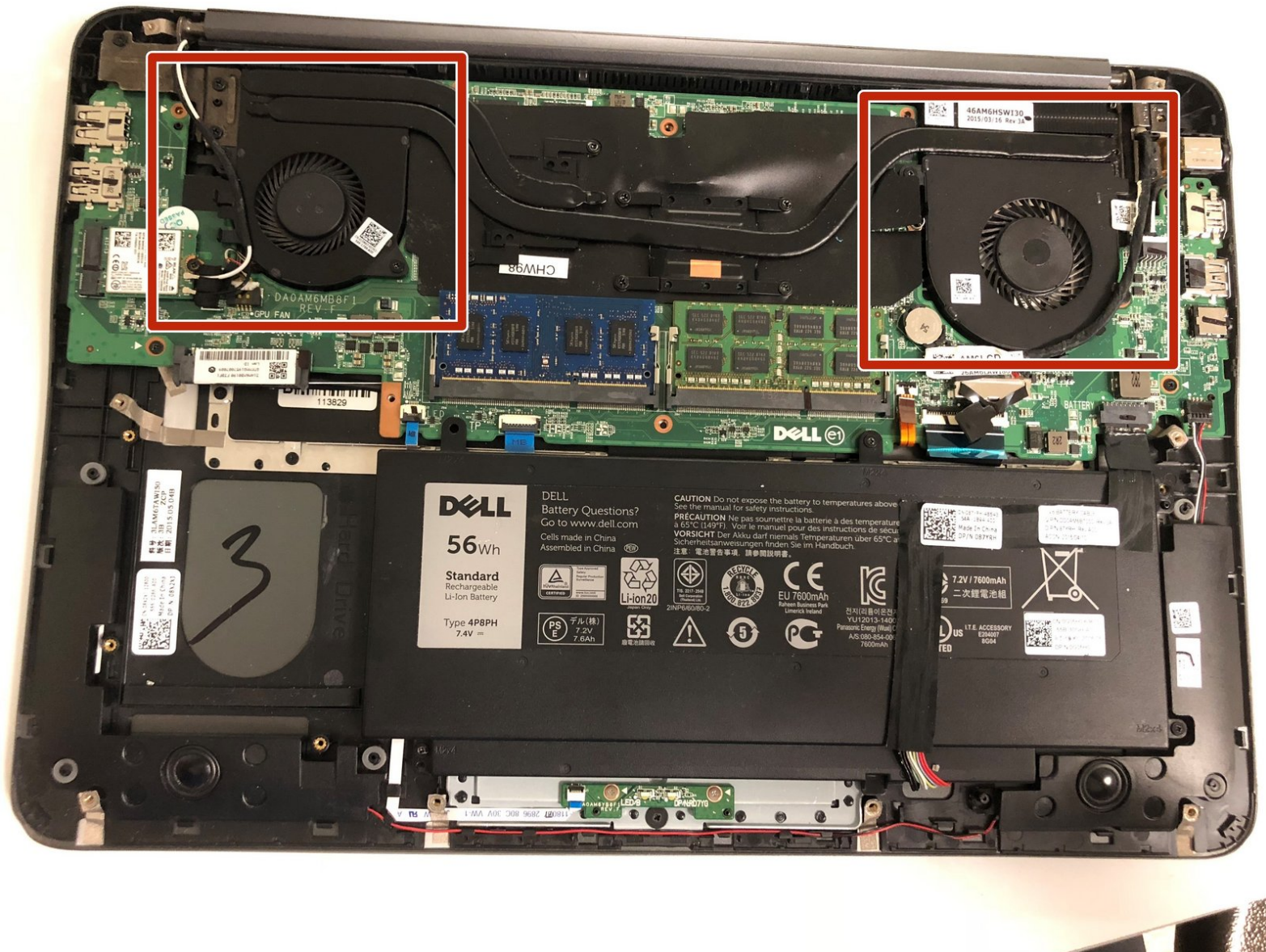




Dell Inspiron 15-7548 Fan Replacement

Use this guide in replacing the Fan in your Dell Inspiron 15-7548.

Written By: Christopher Fisher



INTRODUCTION

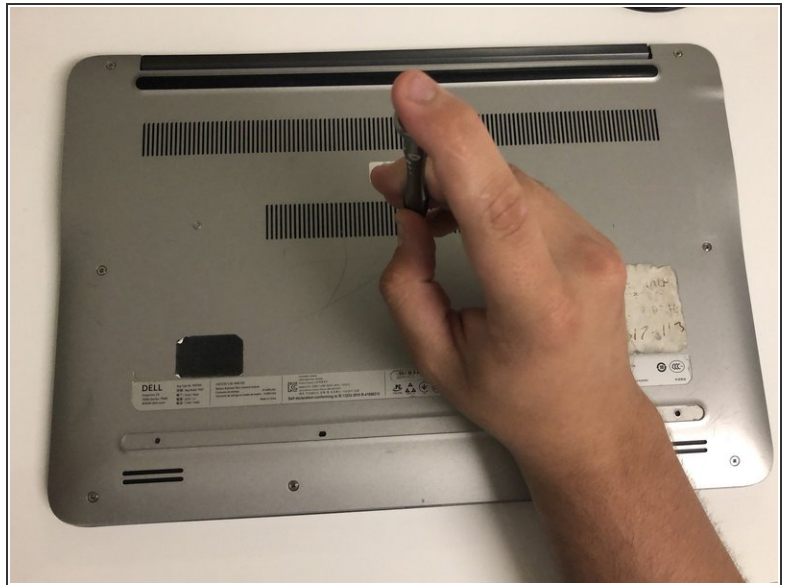
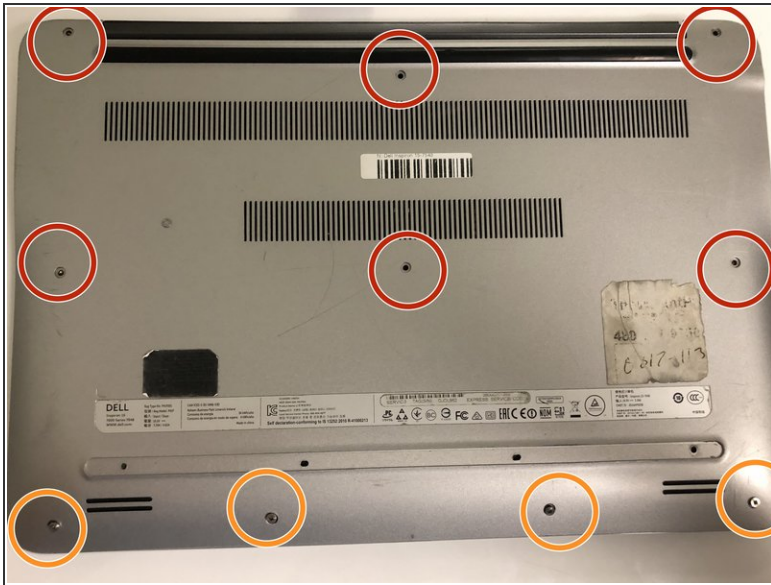
This guide will walk you through how to remove the Fan in your Dell Inspiron 15-7548.



TOOLS:

- [Phillips #1 Screwdriver](#) (1)
 - [Spudger](#) (1)
 - [Tweezers](#) (1)
-

Step 1 — Back Panel



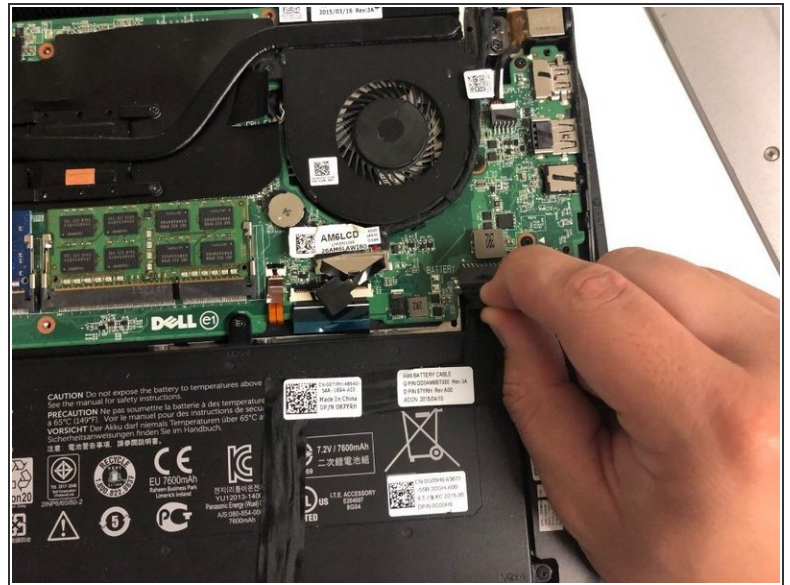
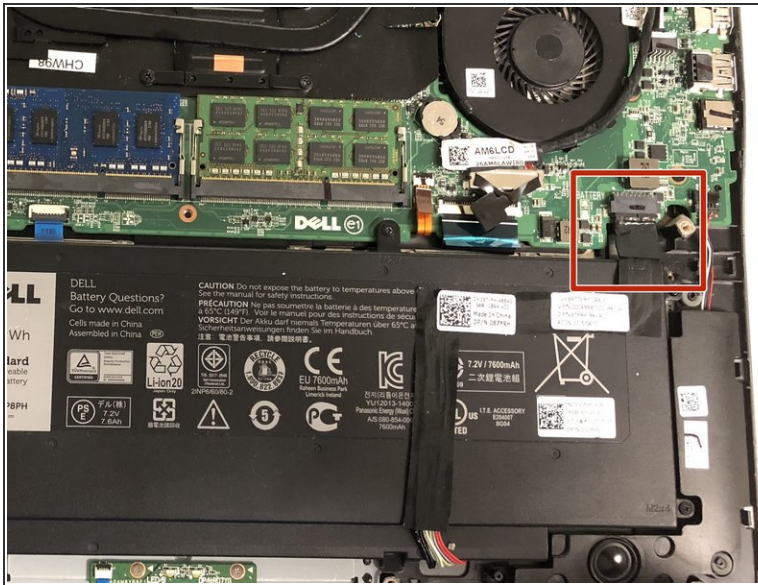
- Unscrew the six 2.5x6mm screws and remove them using a Phillips #1 screwdriver.
- Loosen the four 2x3mm captive screws at the bottom.
- ⓘ The four screws on the bottom are captive screws and cannot be removed.

Step 2



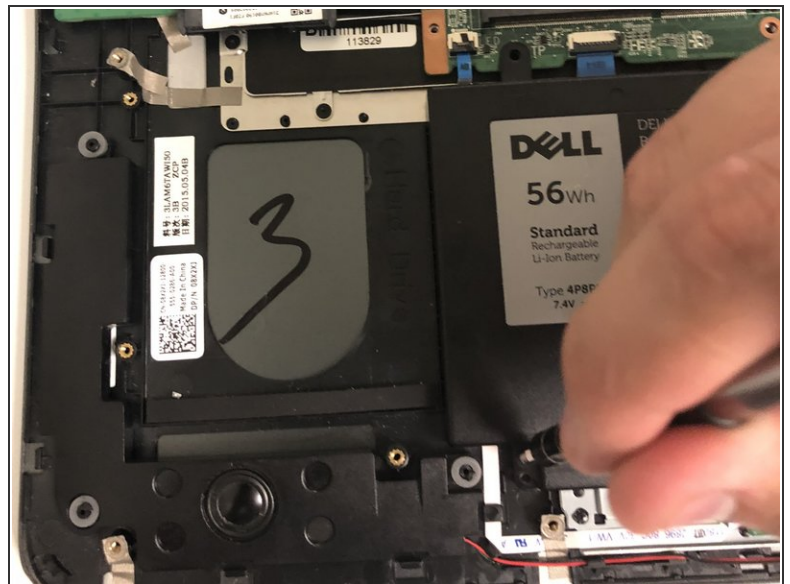
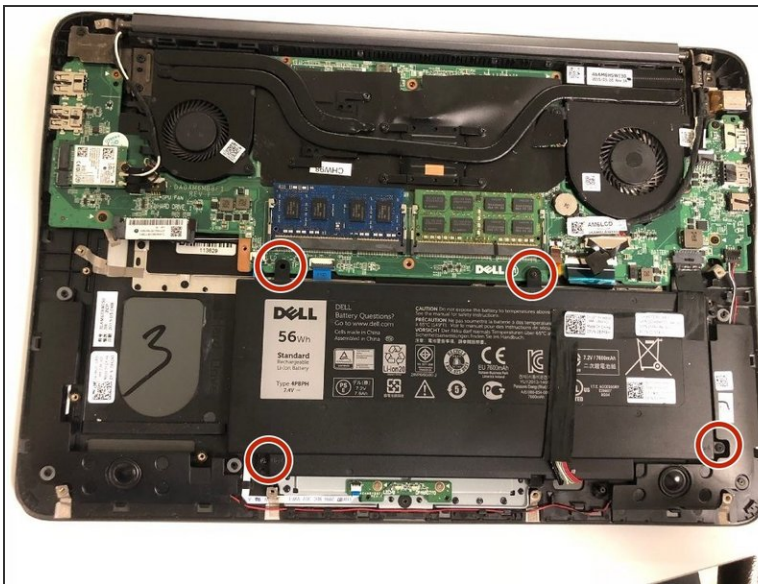
- Using the flat head side of the spudger separate the the back panel from the rest of the laptop.
- ⚠ When separating the bottom and right side of the case do not insert the spudger more than half an inch.

Step 3 — Battery



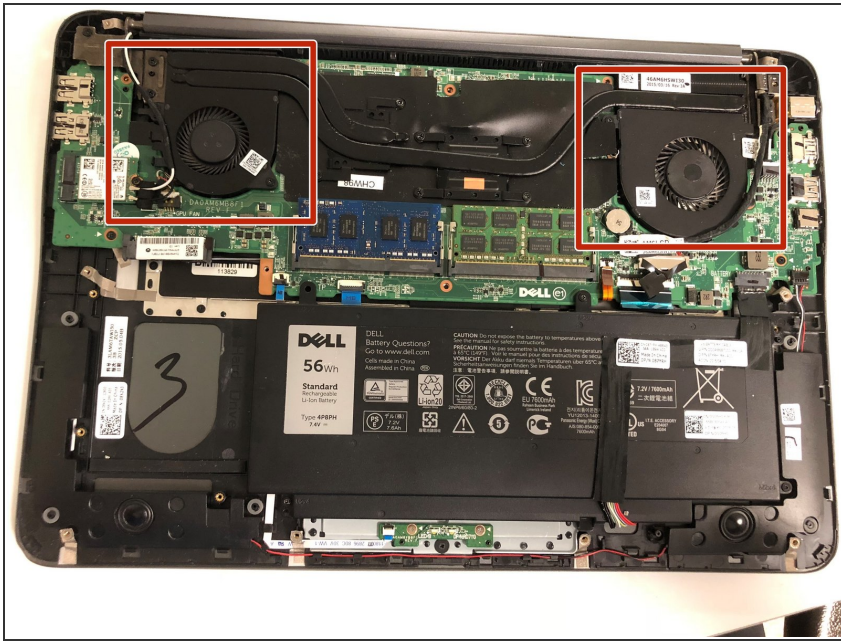
- Disconnect the battery from the motherboard by pulling the black tab attached to the cable.

Step 4



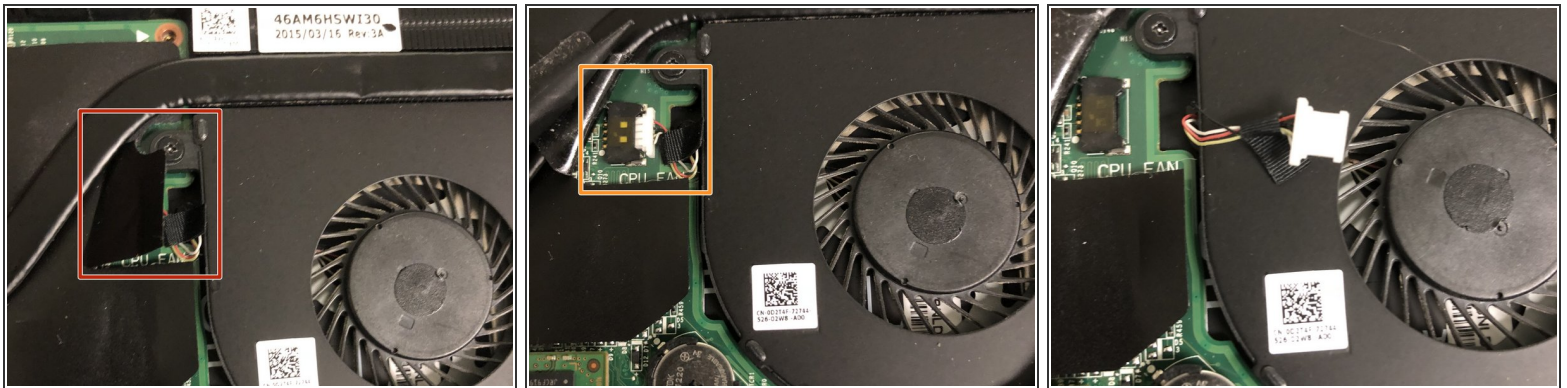
- Remove the four 2.5x6mm screws using a Phillips #1 screwdriver.

Step 5 — Fan



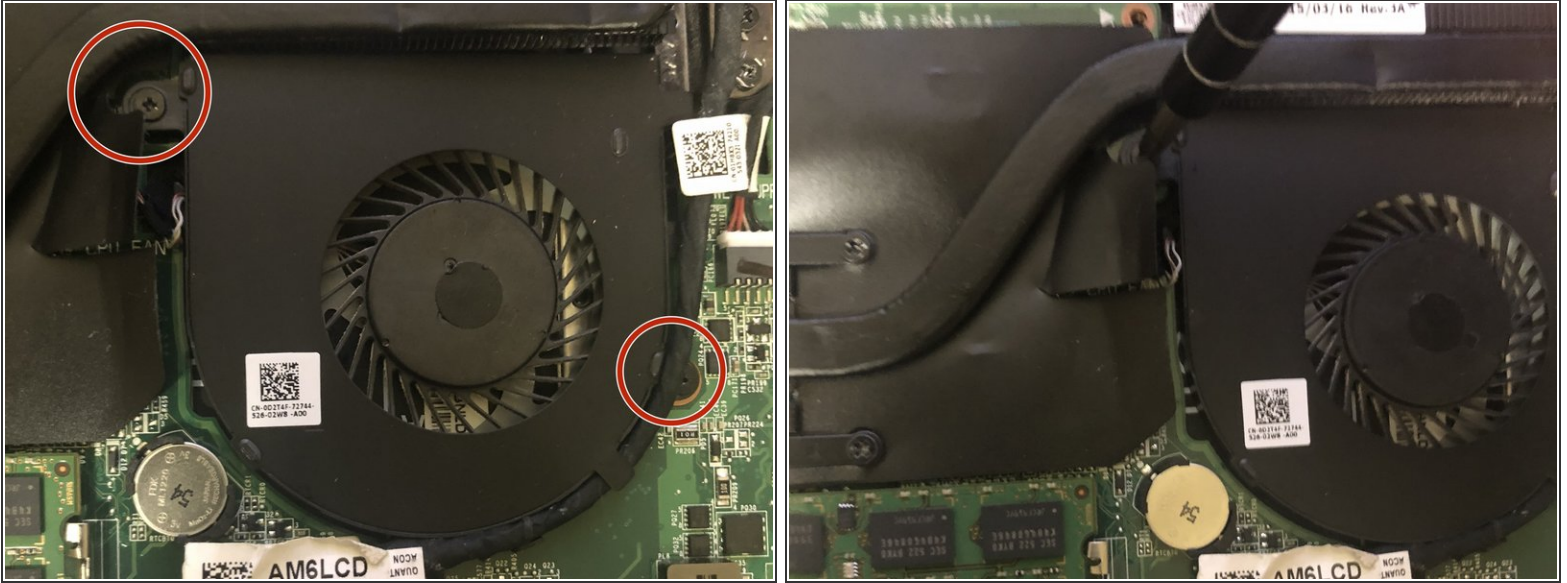
- The two fans are located at the top of the computer.
- ⓘ The fan on the left is for the GPU (Graphics processing unit) and the right fan is for the CPU (Central processing unit).

Step 6



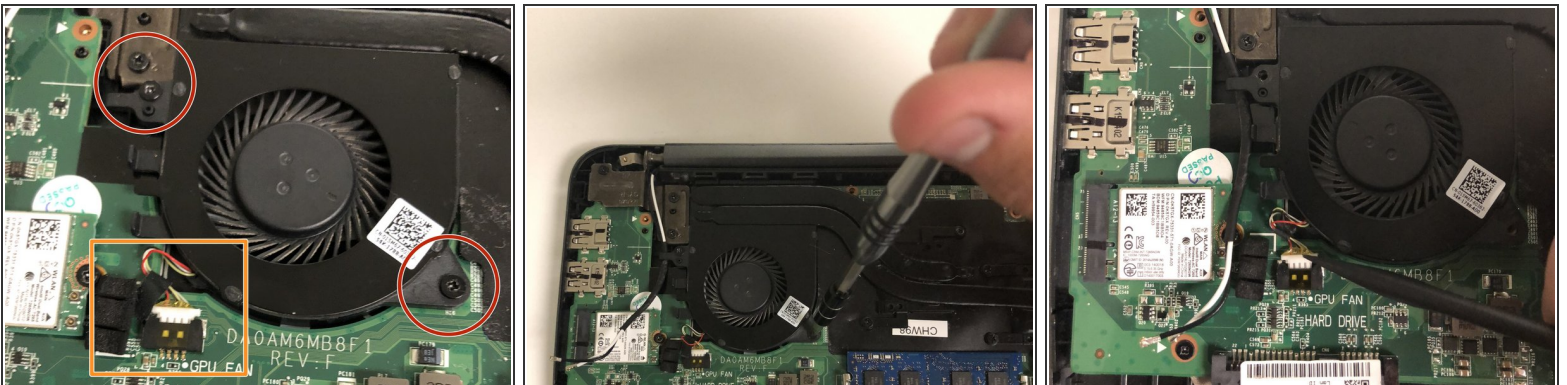
- To unplug the CPU fan lift the black plastic cutout next to the fan.
- The connection can be removed by hand or with the plastic spudger.

Step 7



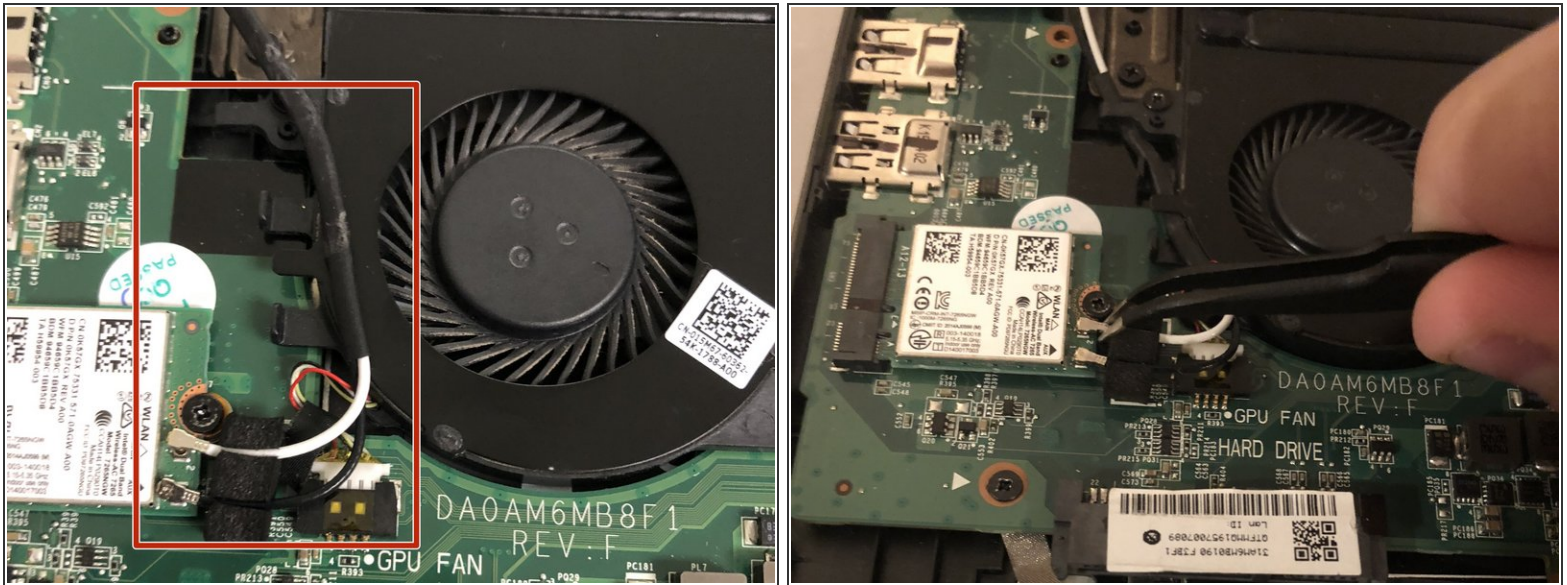
- Remove the two 2x3mm screws from the fan using the Phillips #1 screwdriver.
- The unit may now be removed from the board.
- ❗ The black cord running alongside the fan is for the display. Push it aside if it stops you from removing the fan.

Step 8



- Remove the two 2x3mm screws from the fan using the Phillips #1 screwdriver.
- Disconnect the unit from the motherboard.
- ❗ It may be easier to disconnect with the spudger tool but it can also be done by hand.

Step 9



- The black and white wires need to be unplugged and removed from the tabs on the fan.
- Use a pair of tweezers to unplug the wires.
- ☑ When reconnecting the wires connect the white to the top plug and the black to the bottom.
- The unit may now be removed from the board.

To reassemble your device, follow these instructions in reverse order.