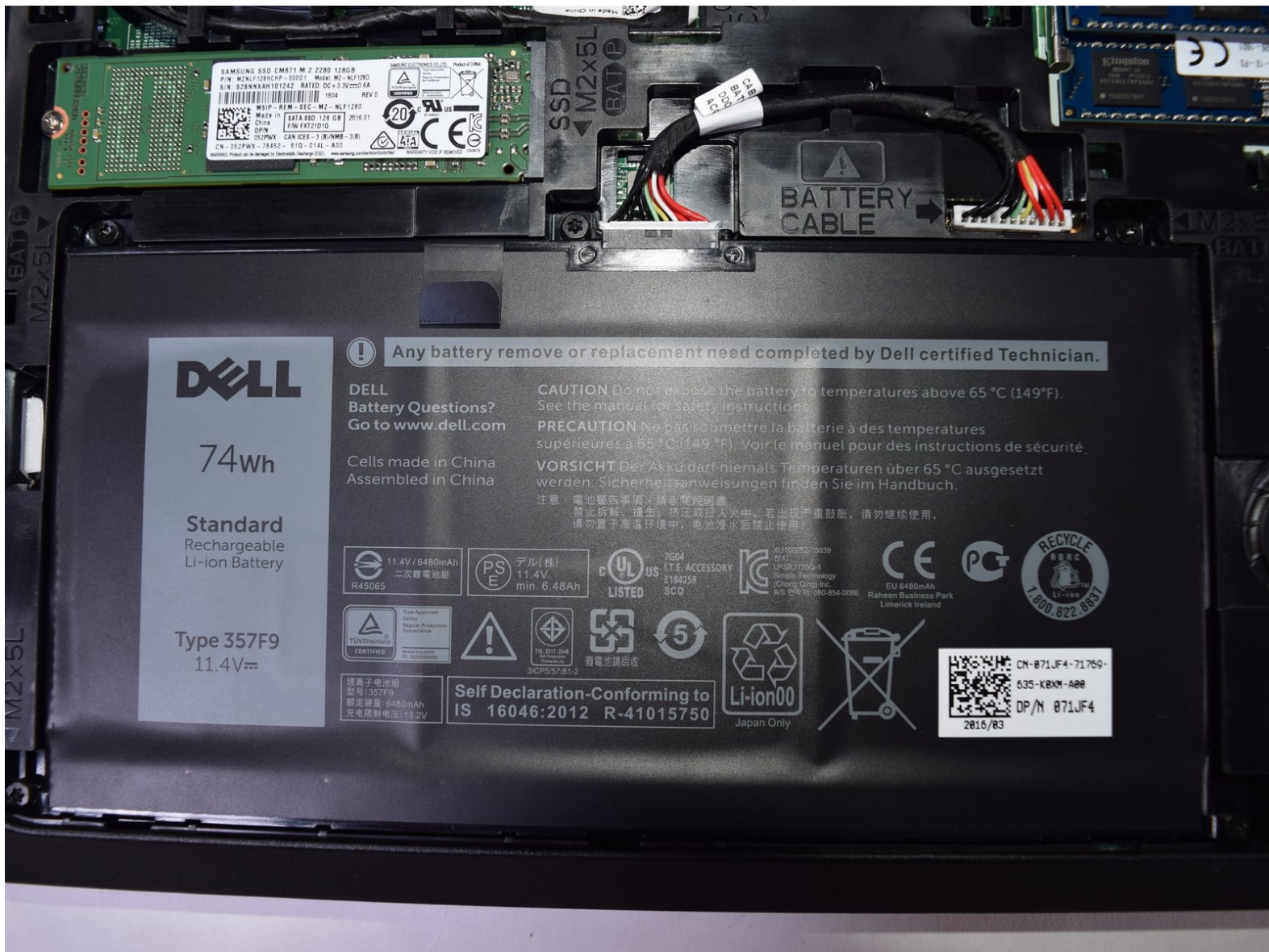




# Dell Inspiron 15-7559 Battery Replacement

Battery replacement guide for the Dell Inspiron 15-7559.

Written By: Trenton Greevebiester



---

## INTRODUCTION

This guide will demonstrate how to replace the battery for the Dell Inspiron 15-7559. This may be necessary if you have issues charging or turning on the device.

---

### TOOLS:

- [iFixit Opening Tools](#) (1)
  - [Phillips #1 Screwdriver](#) (1)
  - [T7 Torx Screwdriver](#) (1)
-

## Step 1 — Back Panel



- Turn off the computer.
- Disconnect the charging cable from the computer.
- ⚠ Failure to turn off the device and disconnect the cable could lead to personal injury or device damage.
- Flip the computer upside down.

## Step 2



- Remove the captive screw located on the top section of the back panel, using a Philips #1 screwdriver.
- ⓘ Keep in mind that the screw cannot be fully removed from the panel, even when fully loosened.



## Step 3



- Use the blue, plastic opening tool to gently pry a section of the back panel open.
- Next slide the opening tool around the back panel to disconnect the connecting pins.
- After the pins have been disconnected the back panel can then be easily lifted off the computer.

## Step 4 — Battery



- Locate the battery on the bottom left side of the laptop.


## Step 5



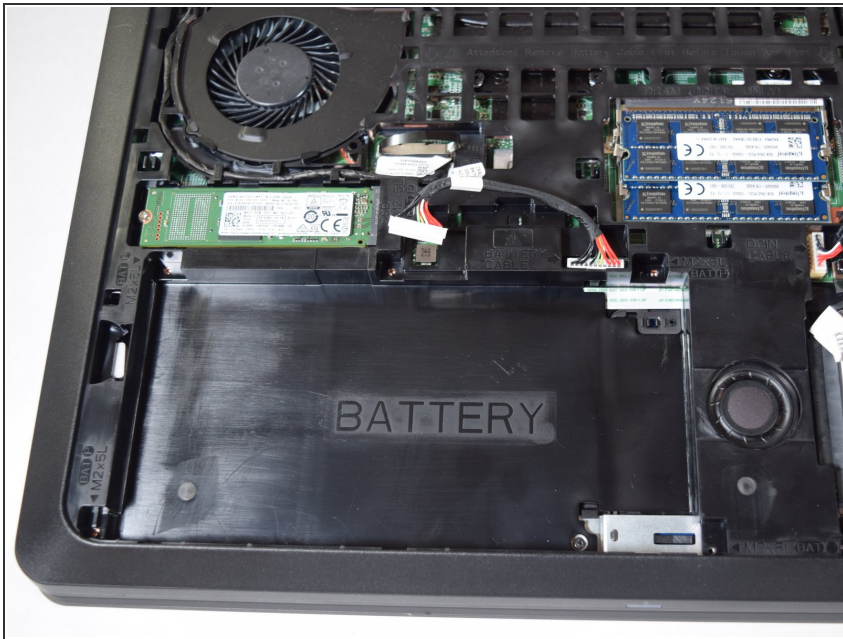
- Unscrew the 5 x 2mm x 5mm screws, using the T7 Torx screwdriver.

## Step 6



- Using the tab above the battery, raise the battery far enough to disconnect the cables attached to it.
- Using your hand grab the white portion connecting the cables to the battery and disconnect it.  
 Do not pull on the cables directly. This would risk damaging them or tearing them from the device.

## Step 7



- Now lift the battery from the device to remove it.

To reassemble your device, follow these instructions in reverse order.