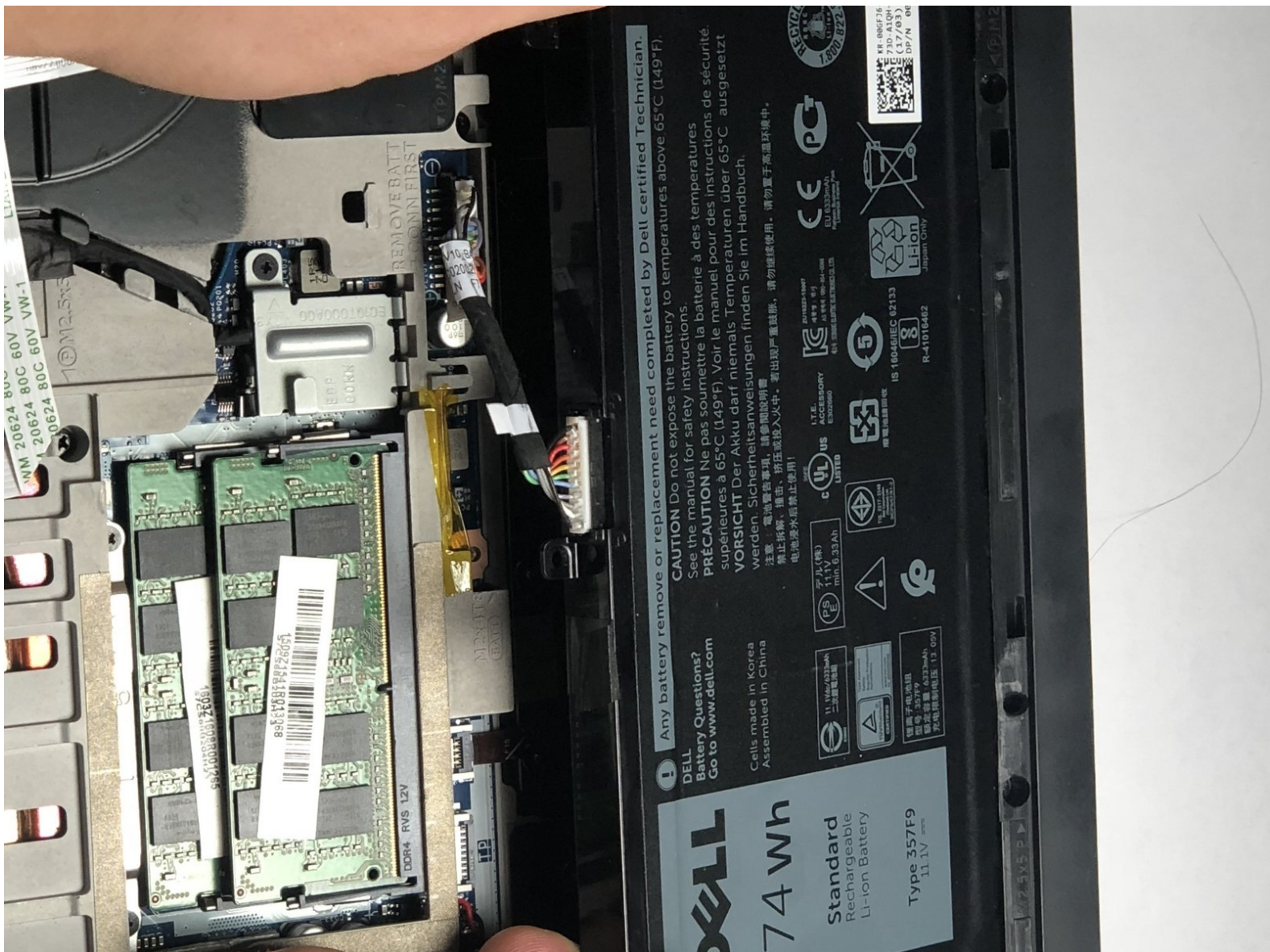




# Dell Inspiron 15-7567 Battery Replacement

By following this guide correctly, the user can expect to easily remove the battery from the laptop. This should take between 6-10 minutes.

Written By: Dallas Lamorie



---

## INTRODUCTION

Taking out the battery is easy to replace when needed. It may need to be replaced if the battery dies quickly.




### TOOLS:

- [Phillips #1 Screwdriver](#) (1)
  - [T8 Torx Screwdriver](#) (1)
-

## Step 1 — Battery



 Turn off laptop before beginning.

- Place the laptop upside down on a flat, stable surface.

## Step 2



- Remove the 3mm screw in the location shown, using a Phillips #1 screwdriver.

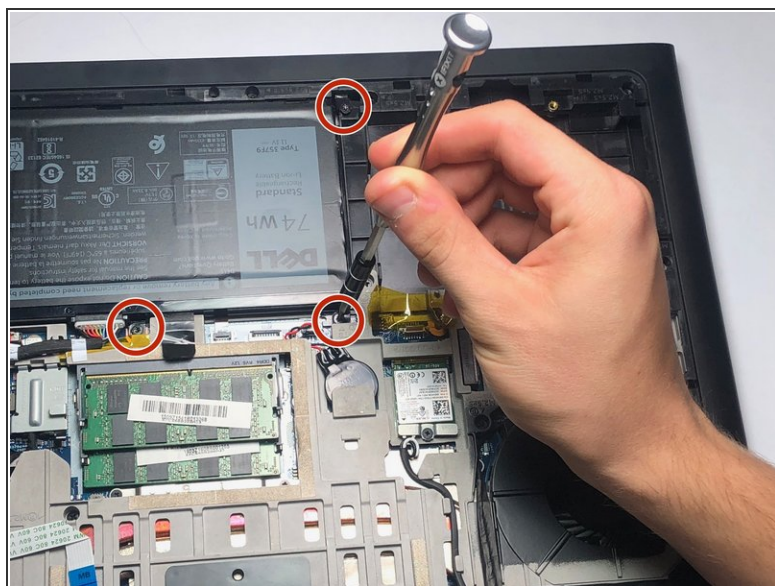
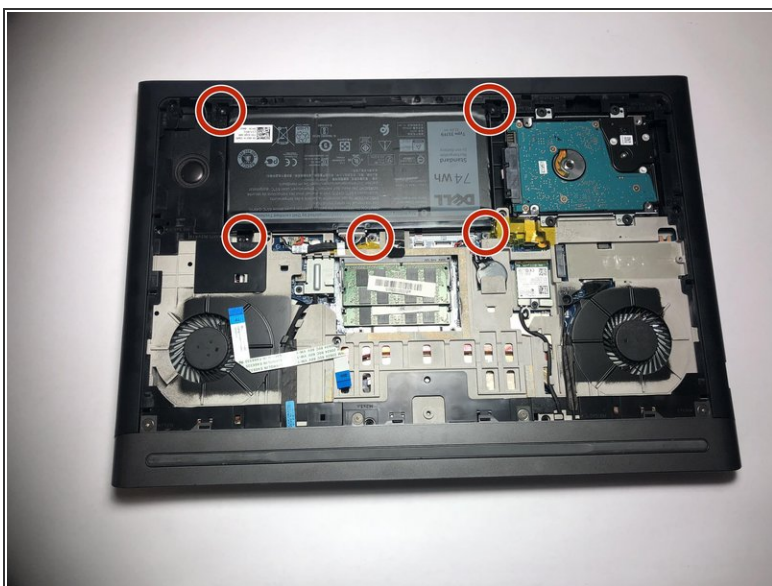


### Step 3



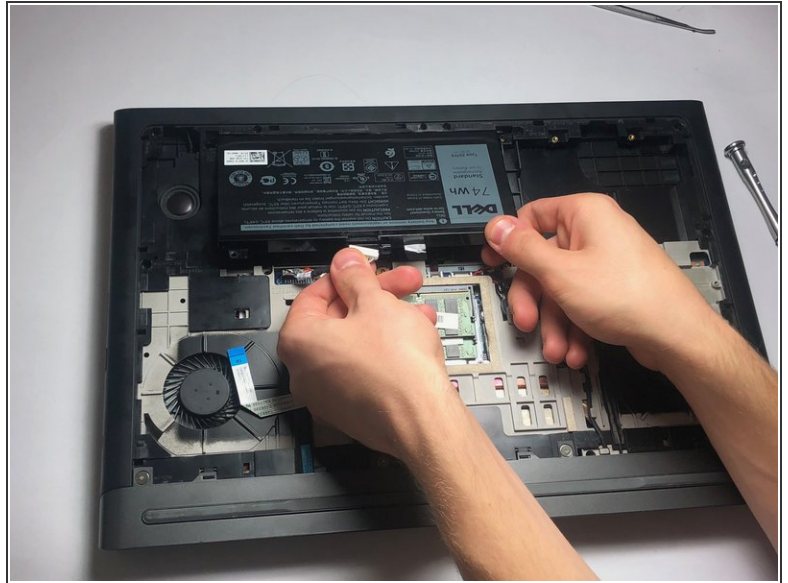
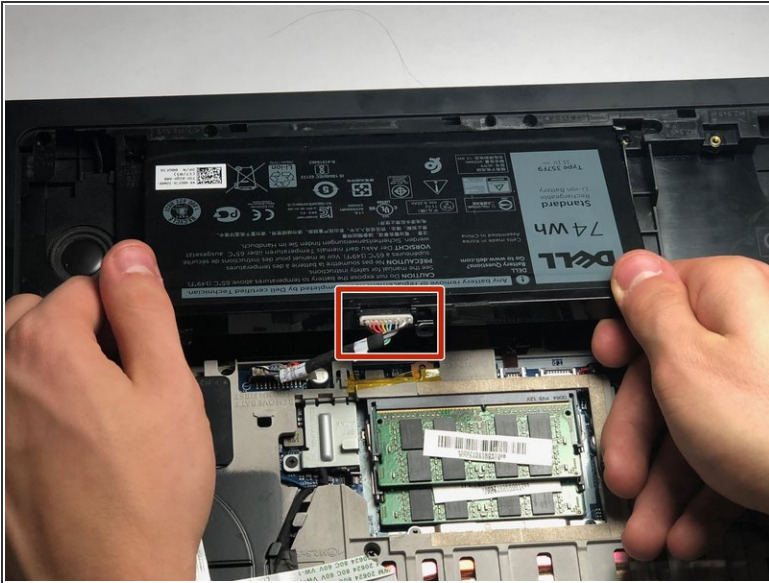
- Remove the panel from the sides and pull it out at an angle towards you.

### Step 4



- Remove the five 3mm screws on the battery with a Torx (T8) screwdriver in the locations shown.

## Step 5



- Disconnect the power cord from the battery by using a pair of tweezers, your fingers, or the opening tools from the iFixit pro tech tool kit.
- Pinch the clips on the left and right side while pulling on the cord at the same time.

## Step 6



- Pull the battery towards you.
- Make sure to pull at an upward angle.

To reassemble your device, follow these instructions in reverse order.