



Dell Inspiron 15-7567 Hard Drive Replacement

Guide for removing and replacing the Hard Drive in a Dell Inspiron.

Written By: Dallas Lamorie



INTRODUCTION

Make sure to disconnect the battery before replacing the hard drive.




TOOLS:

- [T8 Torx Screwdriver](#) (1)
 - [Phillips #1 Screwdriver](#) (1)
 - [iFixit Opening Tools](#) (1)
-

Step 1 — Battery



 Turn off laptop before beginning.

- Place the laptop upside down on a flat, stable surface.

Step 2



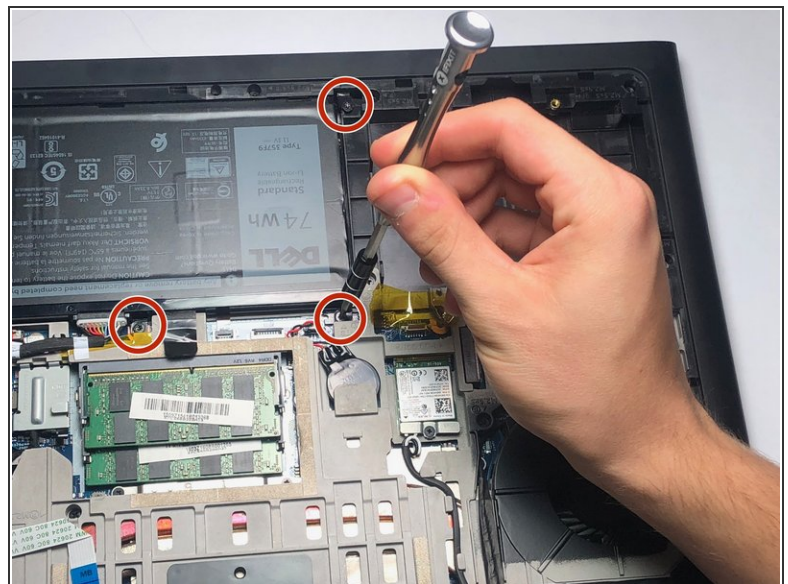
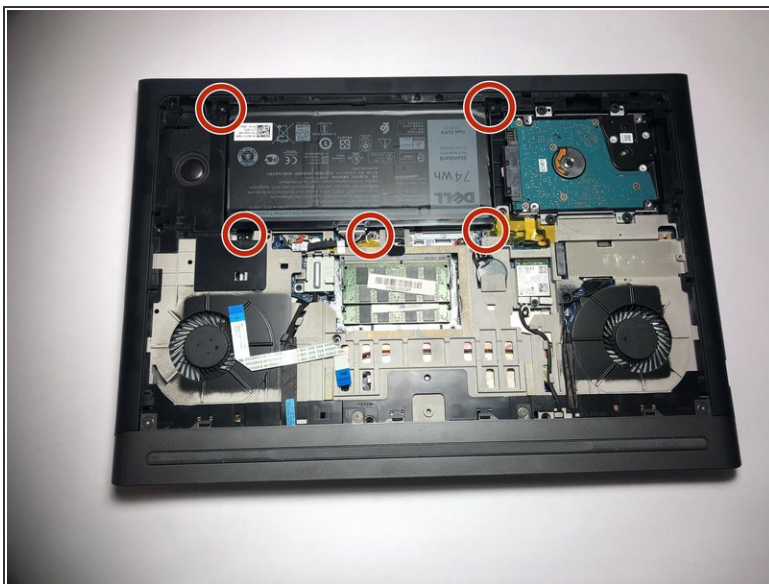
- Remove the 3mm screw in the location shown, using a Phillips #1 screwdriver.

Step 3



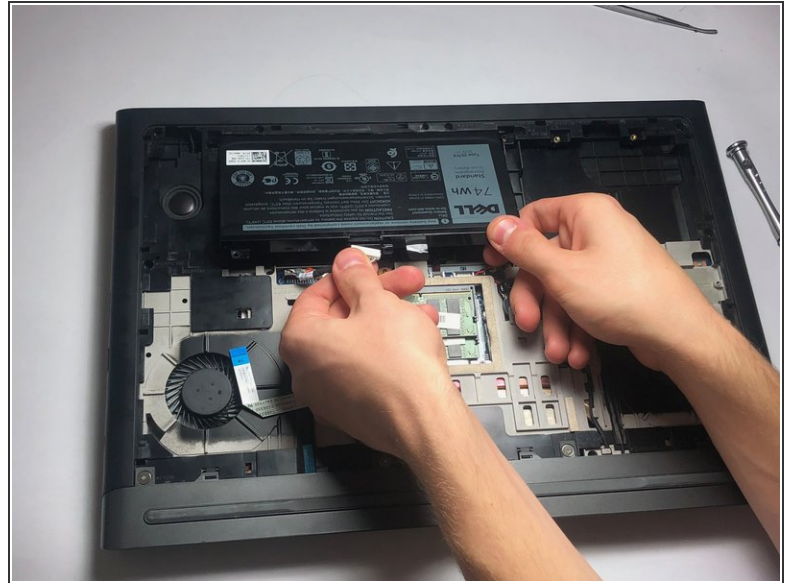
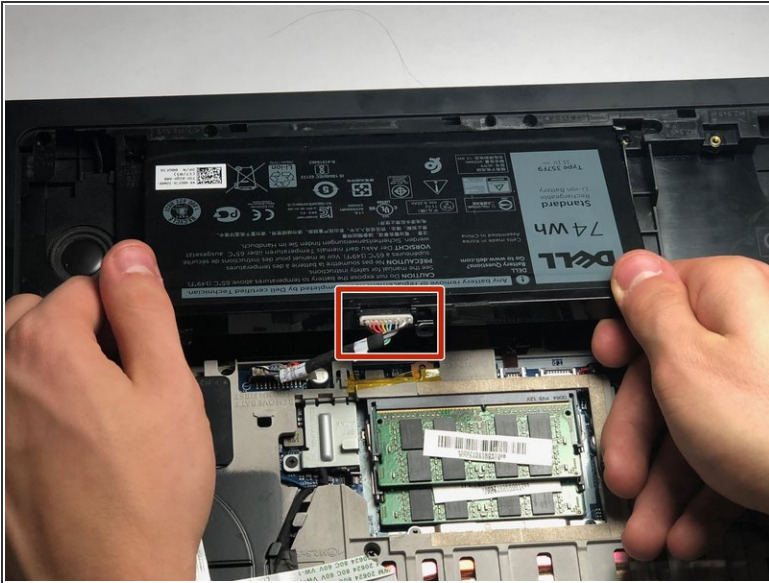
- Remove the panel from the sides and pull it out at an angle towards you.

Step 4



- Remove the five 3mm screws on the battery with a Torx (T8) screwdriver in the locations shown.

Step 5



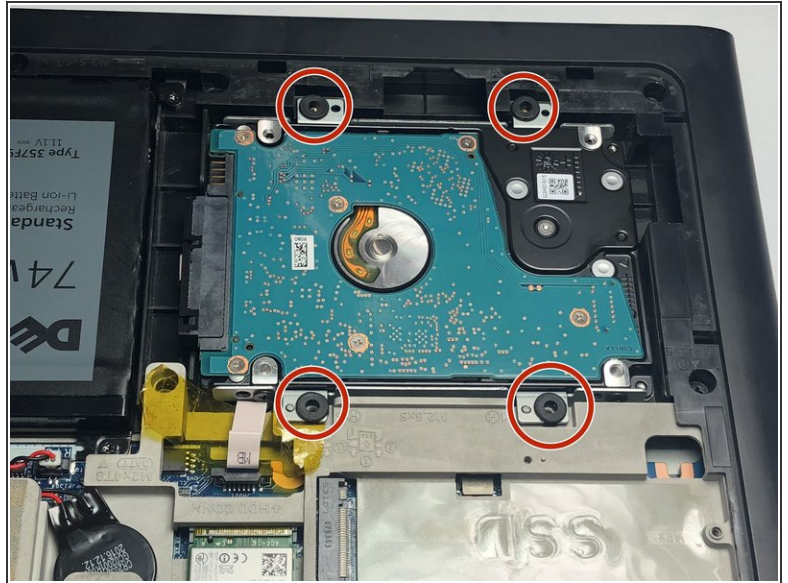
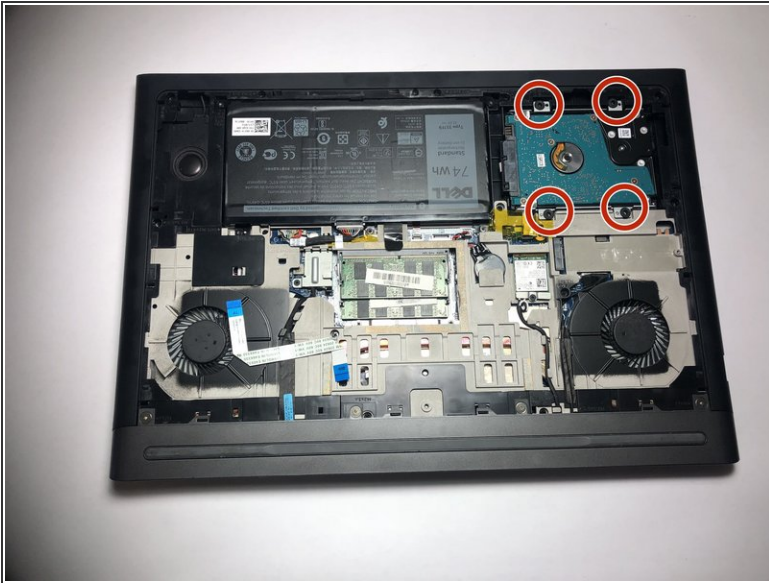
- Disconnect the power cord from the battery by using a pair of tweezers, your fingers, or the opening tools from the iFixit pro tech tool kit.
- Pinch the clips on the left and right side while pulling on the cord at the same time.

Step 6



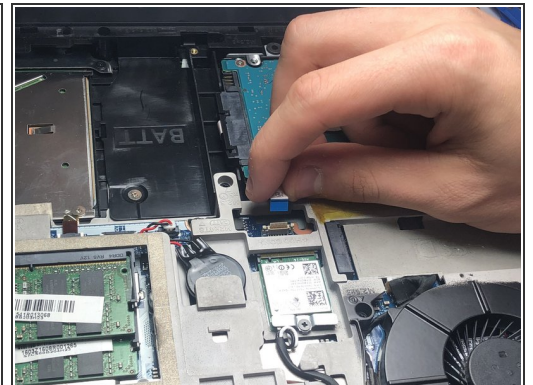
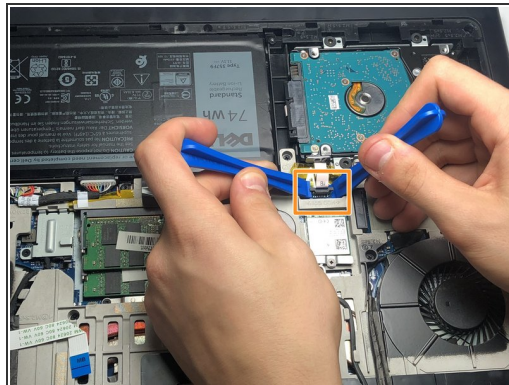
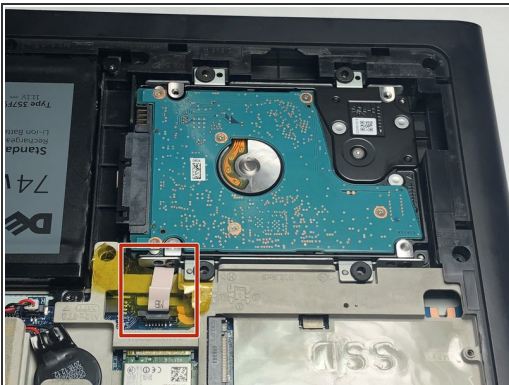
- Pull the battery towards you.
- Make sure to pull at an upward angle.

Step 7 — Hard Drive



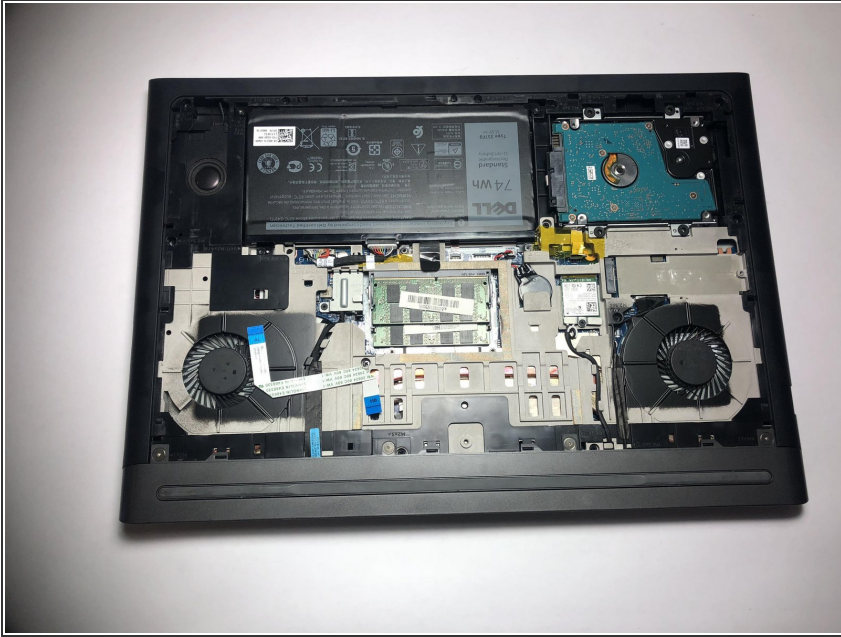
- Remove the four 5mm screws with a Phillips #1 screwdriver.

Step 8



- Remove the cable from the motherboard that is attached to the Hard Drive.
- Use your fingers or the plastic opening tools to gently pull up on the clip, freeing the cable.

Step 9



- Lift and remove Hard Drive.

To reassemble your device, follow these instructions in reverse order.