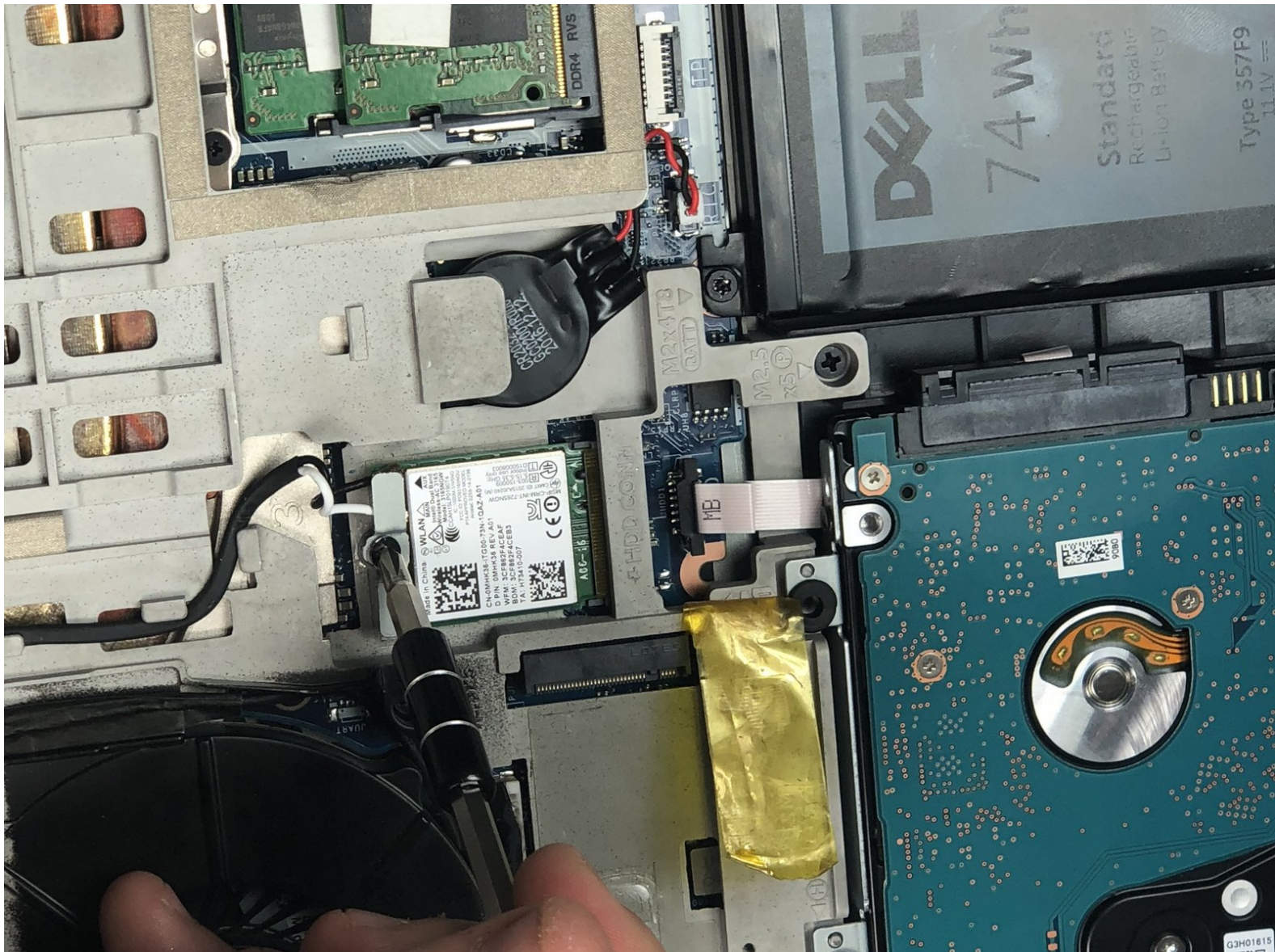




# Dell Inspiron 15-7567 Wireless Card Replacement

This guide will provide easy-to-follow steps in replacing the laptop's wireless card.

Written By: Rachel Holland



---

## INTRODUCTION

The following guide will demonstrate how to replace the wireless card in the Dell Inspiron 15-7567. You may need to replace if your wireless connection is bad.

---




### TOOLS:

- [T8 Torx Screwdriver](#) (1)
  - [Phillips #1 Screwdriver](#) (1)
  - [iFixit Opening Tools](#) (1)
-

## Step 1 — Battery



 Turn off laptop before beginning.

- Place the laptop upside down on a flat, stable surface.

## Step 2



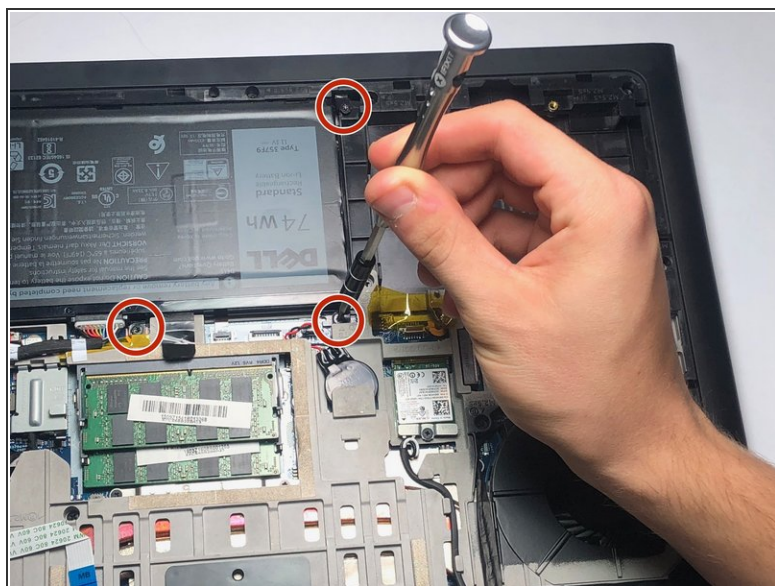
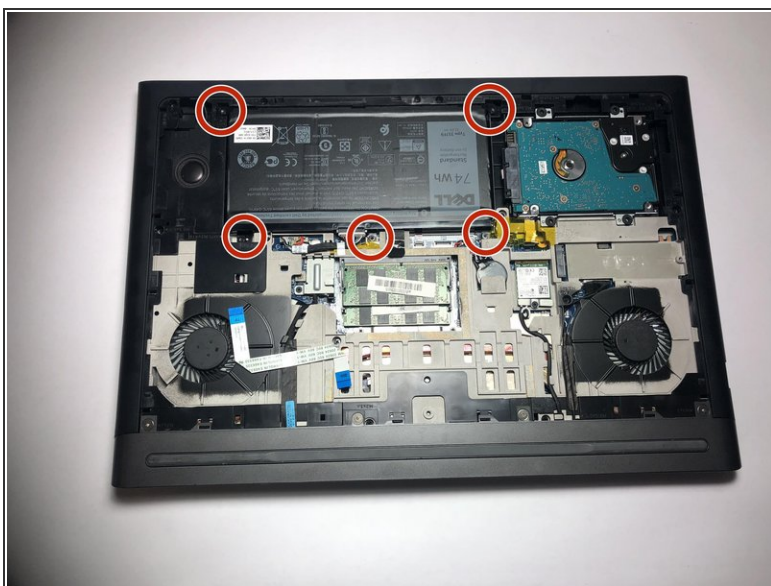
- Remove the 3mm screw in the location shown, using a Phillips #1 screwdriver.

### Step 3



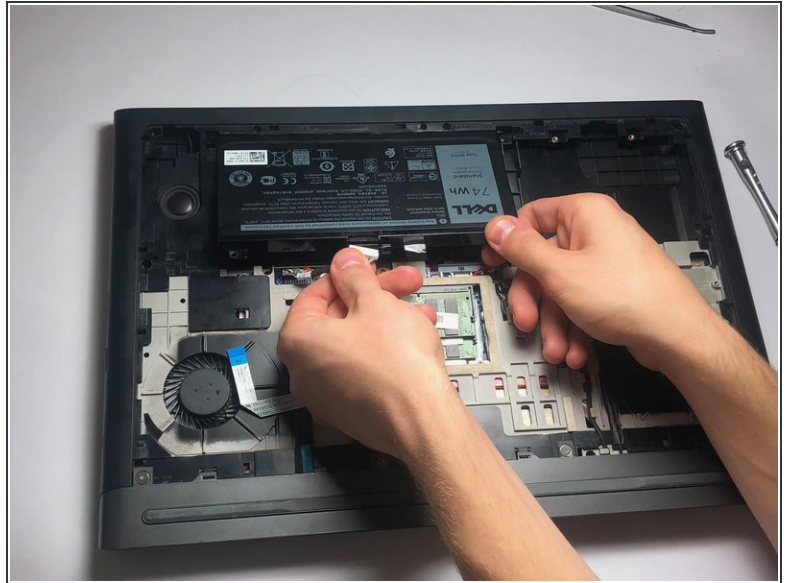
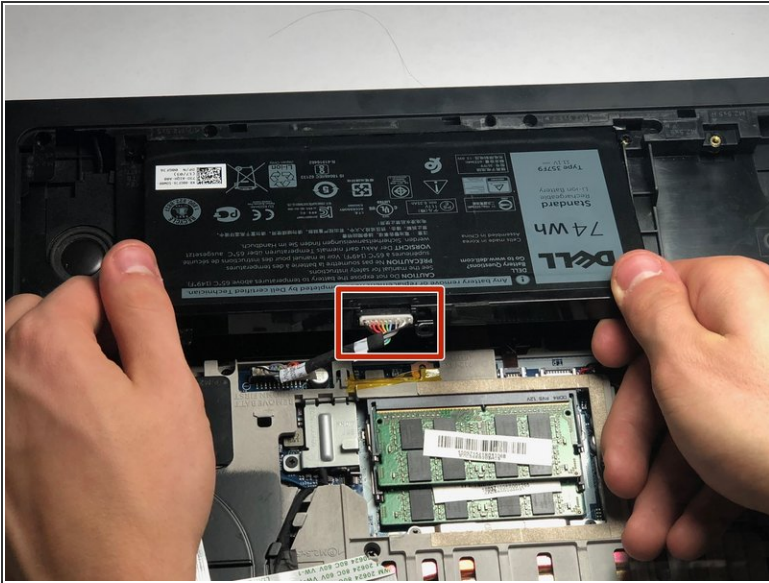
- Remove the panel from the sides and pull it out at an angle towards you.

### Step 4



- Remove the five 3mm screws on the battery with a Torx (T8) screwdriver in the locations shown.

## Step 5



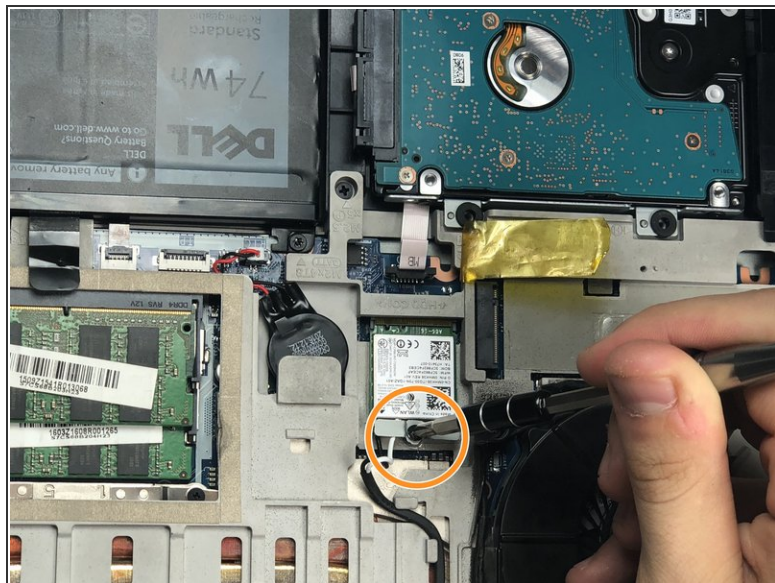
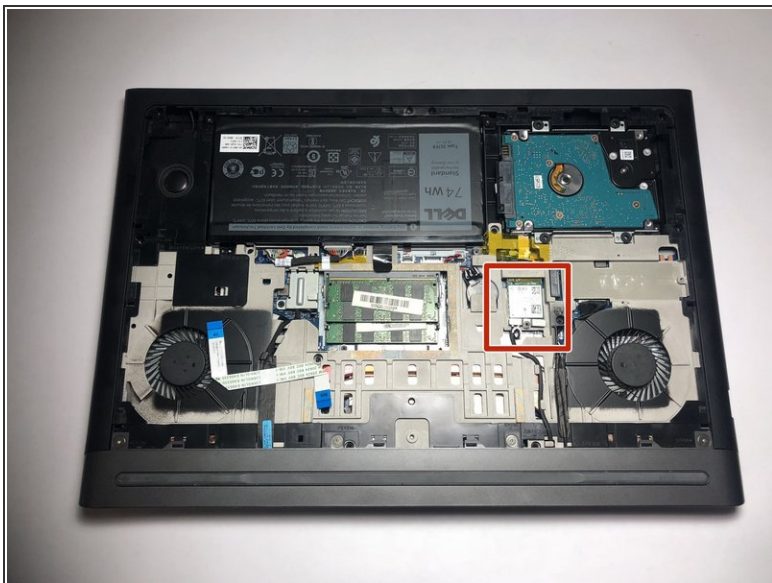
- Disconnect the power cord from the battery by using a pair of tweezers, your fingers, or the opening tools from the iFixit pro tech tool kit.
- Pinch the clips on the left and right side while pulling on the cord at the same time.

## Step 6



- Pull the battery towards you.
- Make sure to pull at an upward angle.

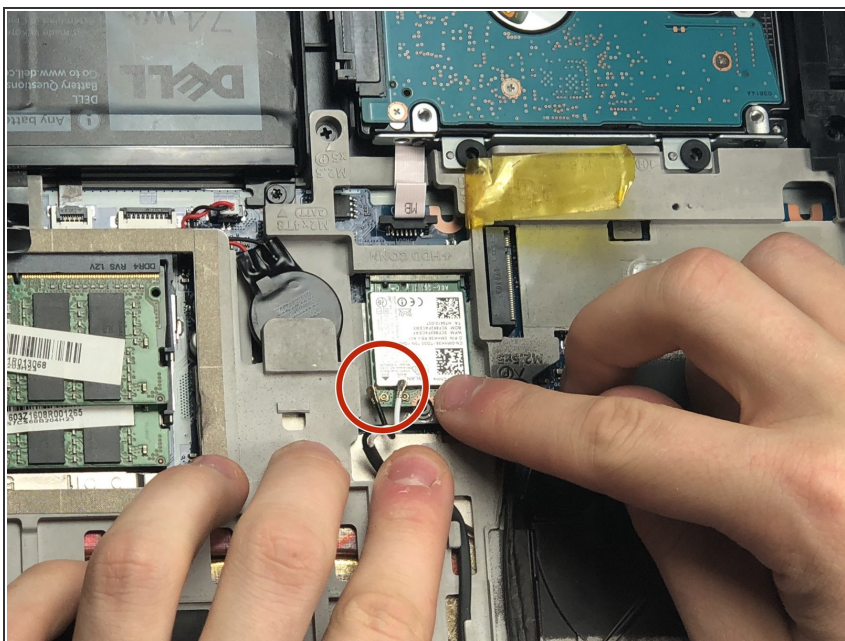
## Step 7 — Wireless Card



- Remove the 3mm screw using the Phillips #0 screwdriver in the location shown.

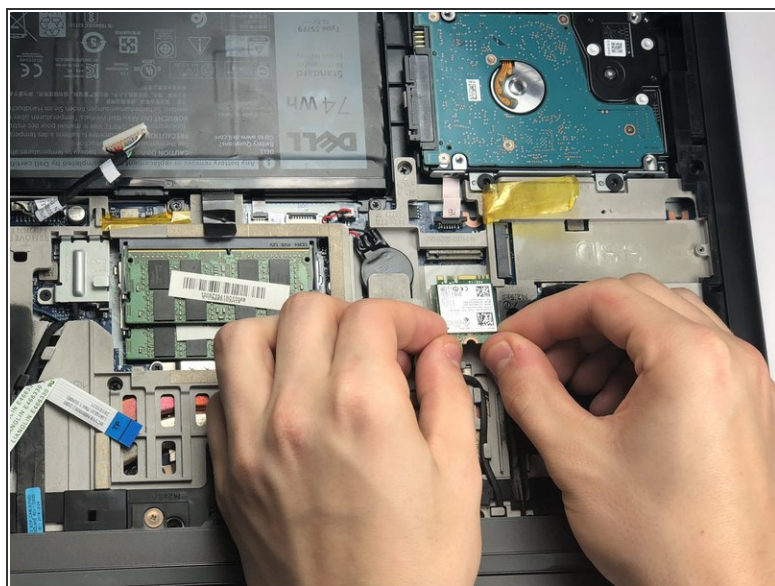
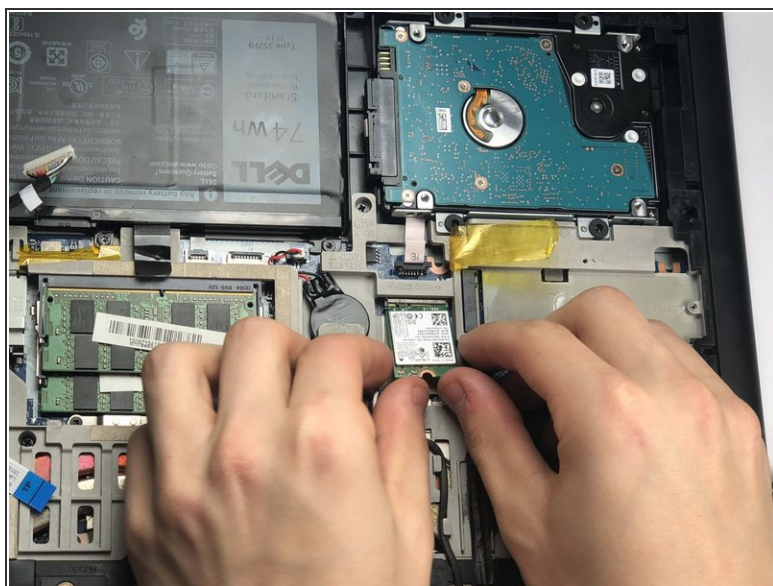
**i** Remove the grey panel as well.

## Step 8



- Detach the black and white wires connected to the card by gently lifting up on the wires.

## Step 9



- Gently pull the wireless card out at an angle towards you.

To reassemble your device, follow these instructions in reverse order.