



Dell Inspiron 1501 Display Replacement

How to replace the display of a Dell Inspiron 1501 laptop.

Written By: Luc-Anthony Breneville



INTRODUCTION

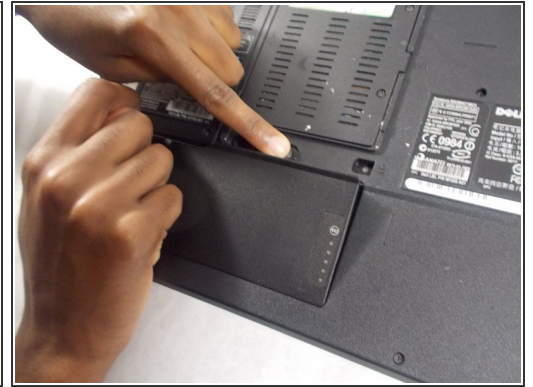
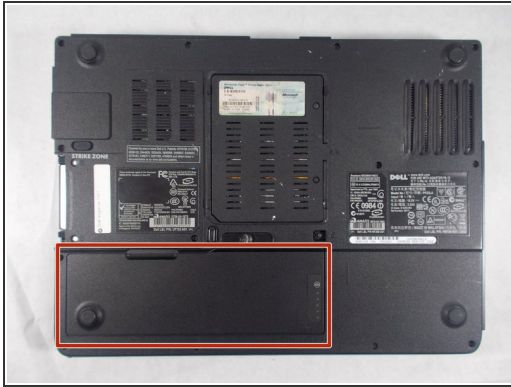
This guide will show you how to remove the display from your Dell Inspiron 1501.



TOOLS:

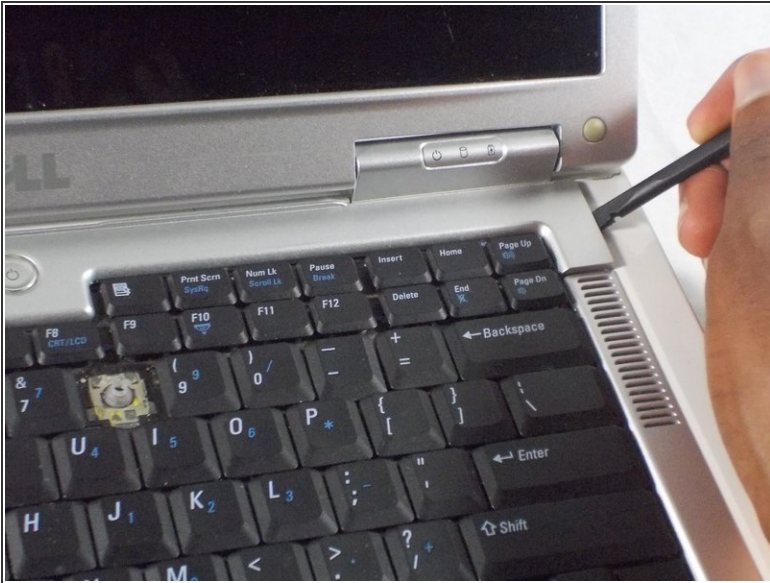
- [JIS #1](#) (1)
 - [Spudger](#) (1)
-

Step 1 — Battery



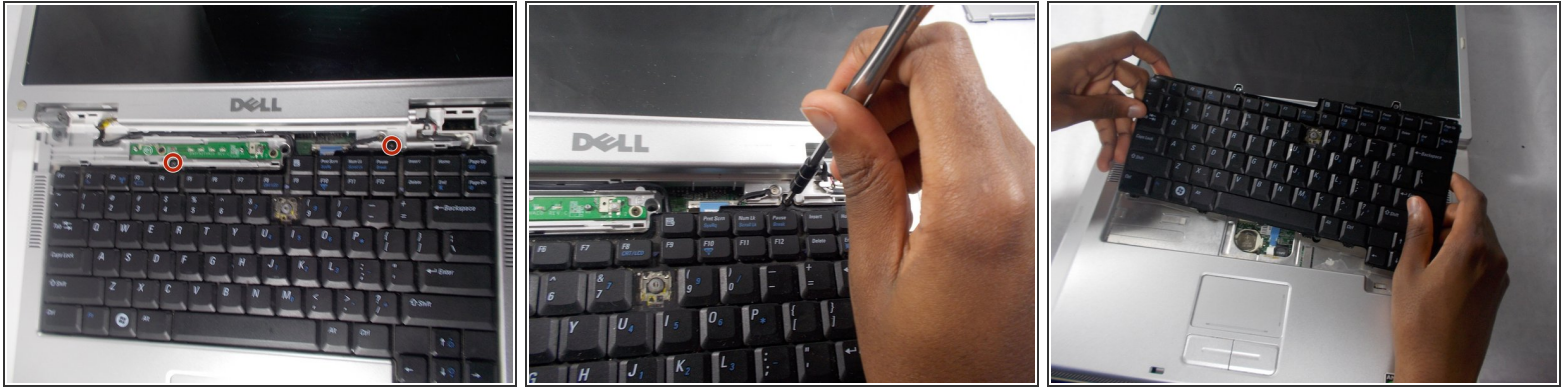
- Place the laptop facedown with the battery facing you.
- Push the switch above the battery to the right and hold it in that position.
- Lift the battery using the grip on the top and remove it from its socket.

Step 2 — Hinge Cover



- Open the laptop all the way, rotating the display so that it is level with the surface that you are working on.
- Insert the spudger underneath the groove on the right side of the hinge cover.
- Push up to pry the edge of the hinge cover out.
- Lift up to release the hinge cover from the laptop, working from right to left.

Step 3 — Keyboard



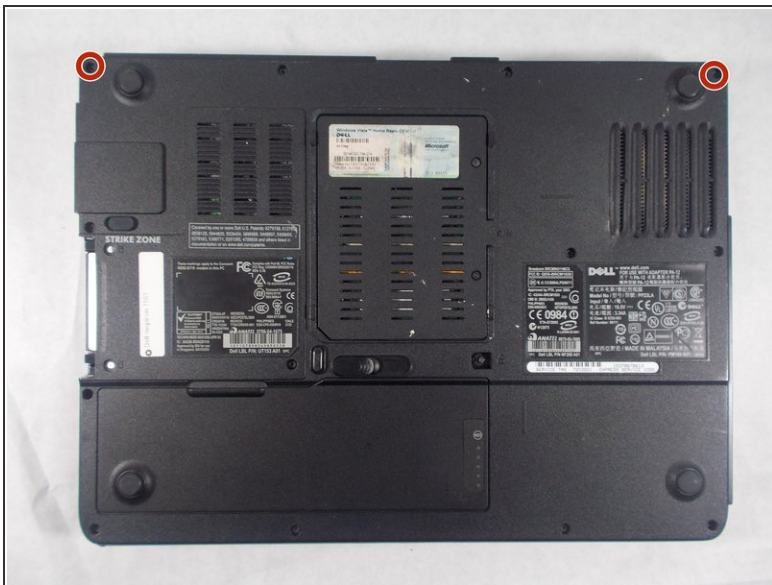
- Remove the two 5mm JIS #1 screws from the top of the keyboard.
 - Lift the top of the keyboard up and pull the keyboard away from the laptop.
- ⚠ Be sure not to break the ribbon connector that attaches the keyboard to the laptop.

Step 4



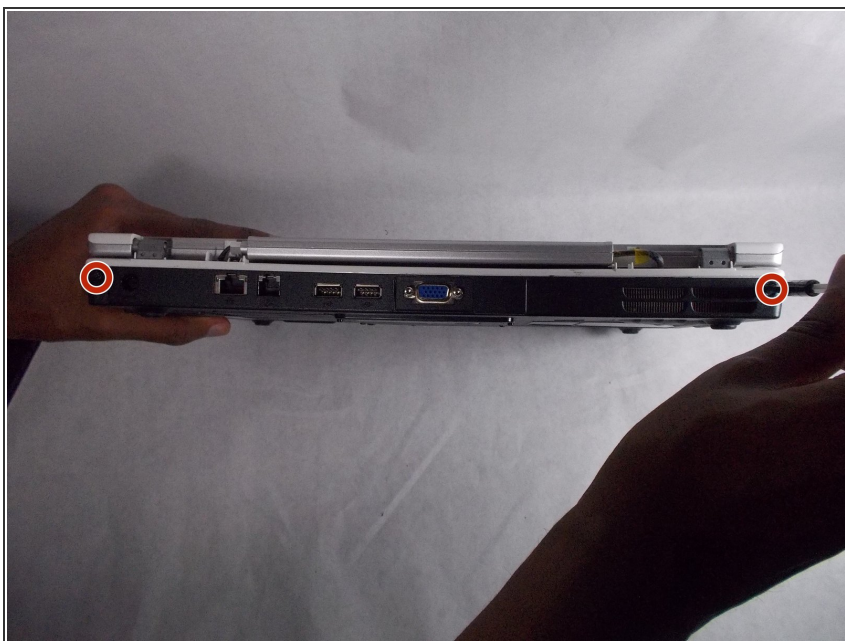
- Open the latch holding the ribbon from the top
- Remove the keyboard from the laptop.

Step 5 — Display



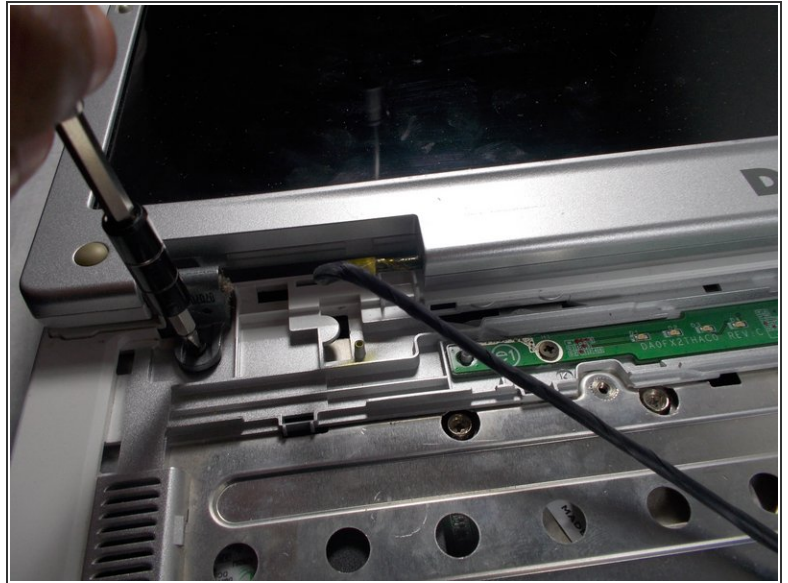
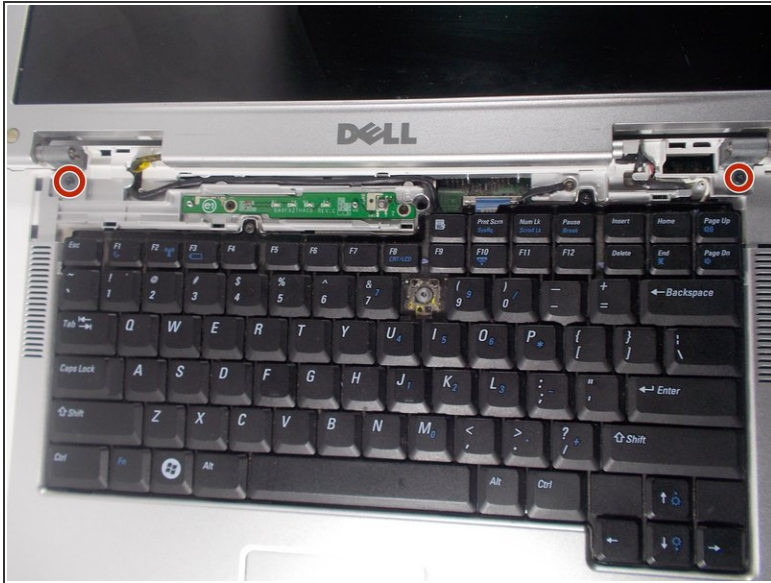
- Close display and flip the laptop upside down.
- Remove the two 8mm JIS #1 screws on the backplate that hold the display.

Step 6



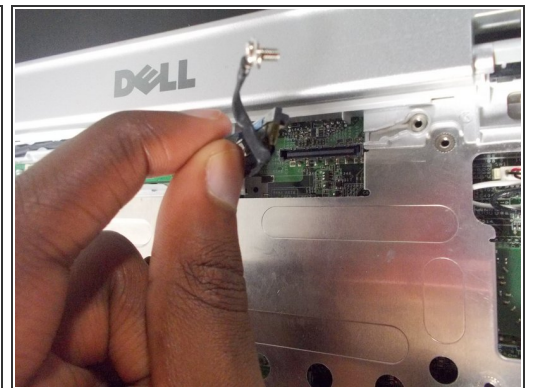
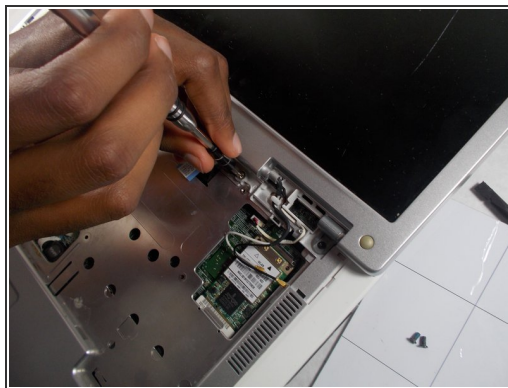
- From the back of the computer, remove the two screw covers.
- Remove the two 8mm JIS #1 screws.

Step 7



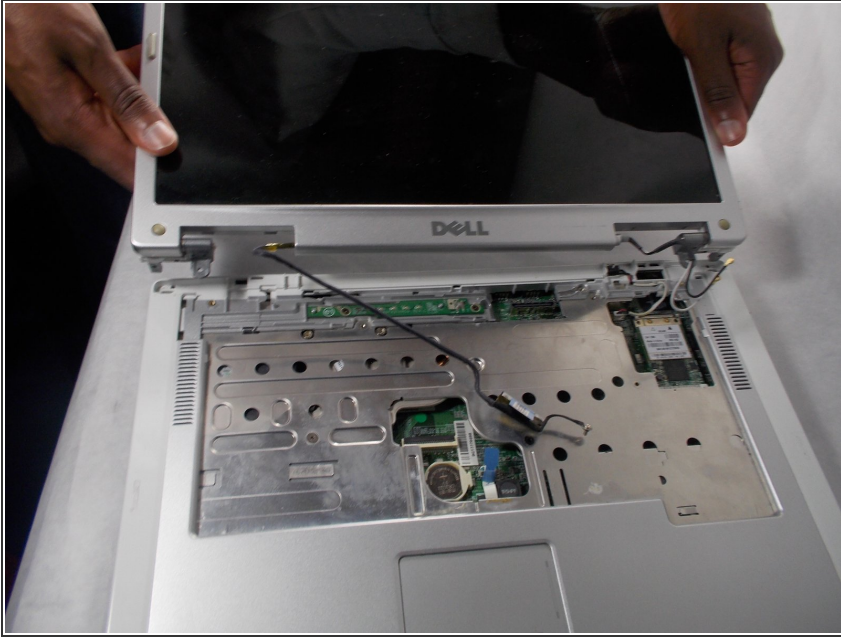
- Turn the laptop over and open the display.
- Remove the two 5mm JIS #1 screws on the display hinge.

Step 8



- Disconnect the antenna cables from the Mini-Card.
 - ⚠ Be careful not to knock the standby switch when disconnecting the cables as it is easily broken.
- Loosen the JIS #1 screw on the display cable.
- Pull the pull-tab straight up to disconnect the display cable from the laptop.

Step 9



- Remove the display from the rest of the device.

To reassemble your device, follow these instructions in reverse order.