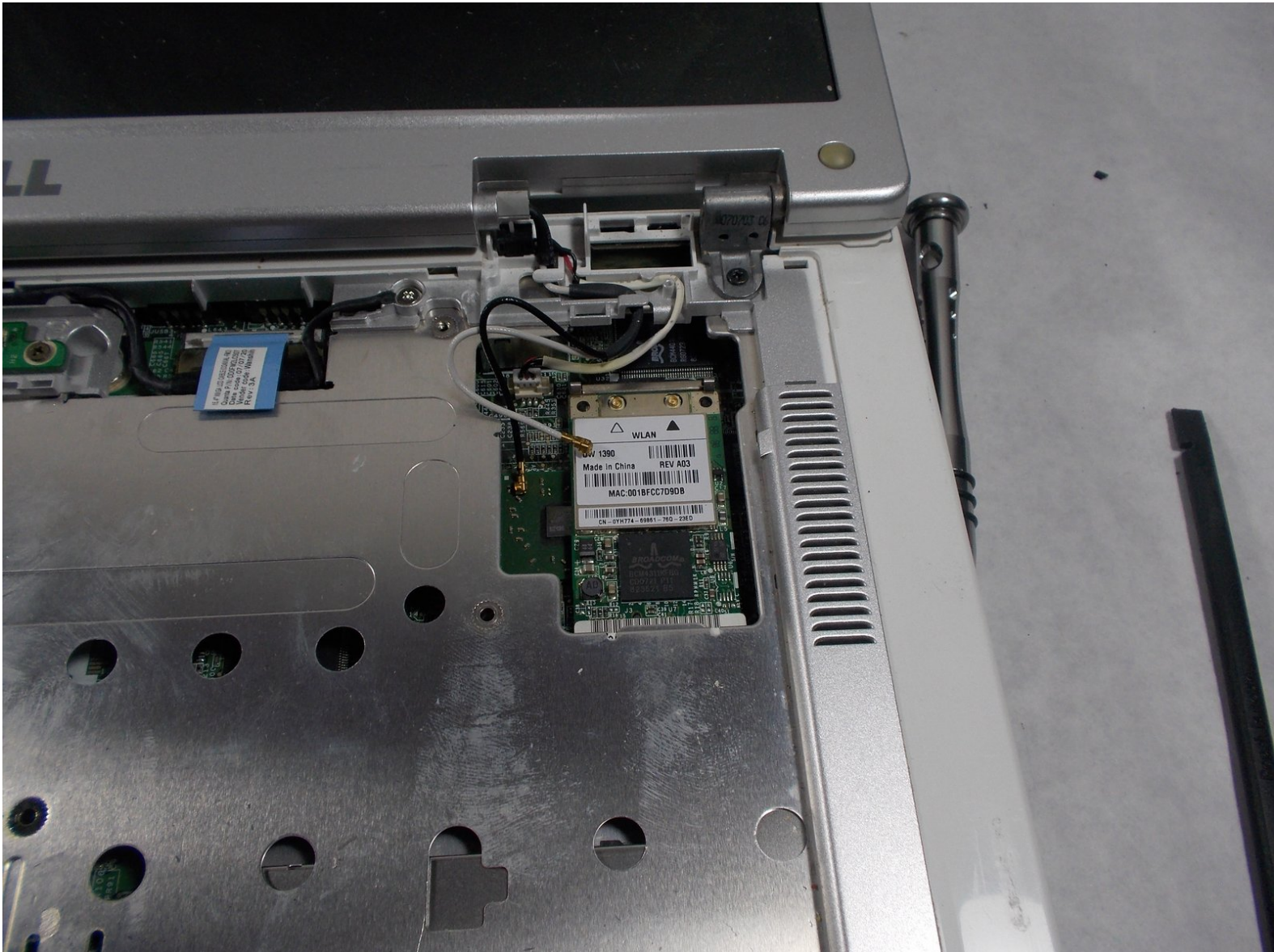




# Dell Inspiron 1501 Wireless Mini-Card Replacement

How to replace the wireless mini-card in the Dell Inspiron 1501

Written By: Don Dao



---

## INTRODUCTION

This guide will teach you how to replace the wireless mini-card in your laptop.

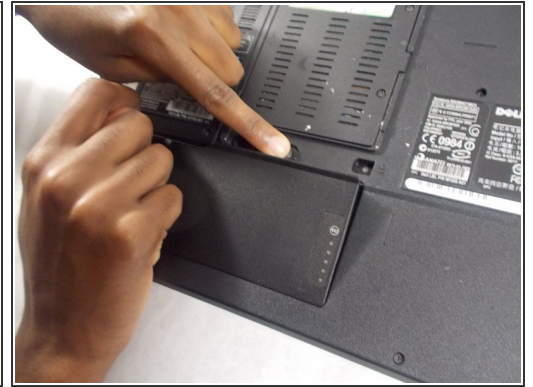
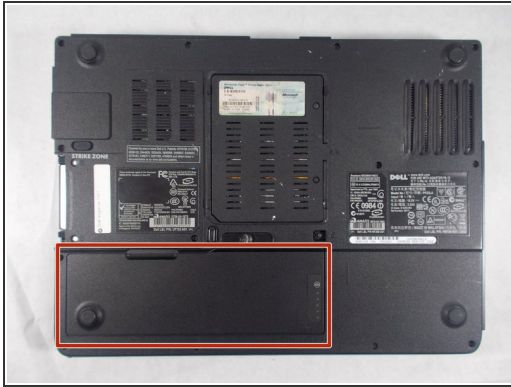
---



### TOOLS:

- [Phillips #1 Screwdriver](#) (1)
  - [Spudger](#) (1)
-

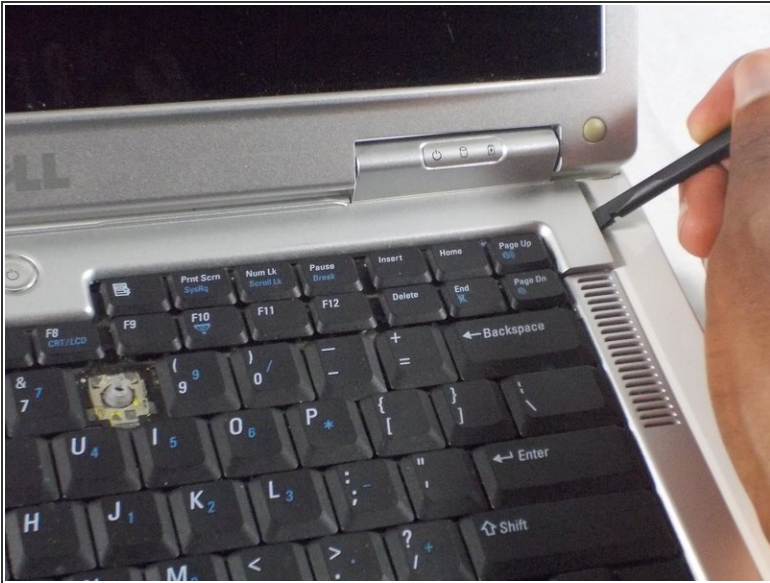
## Step 1 — Battery



- Place the laptop facedown with the battery facing you.
- Push the switch above the battery to the right and hold it in that position.
- Lift the battery using the grip on the top and remove it from its socket.

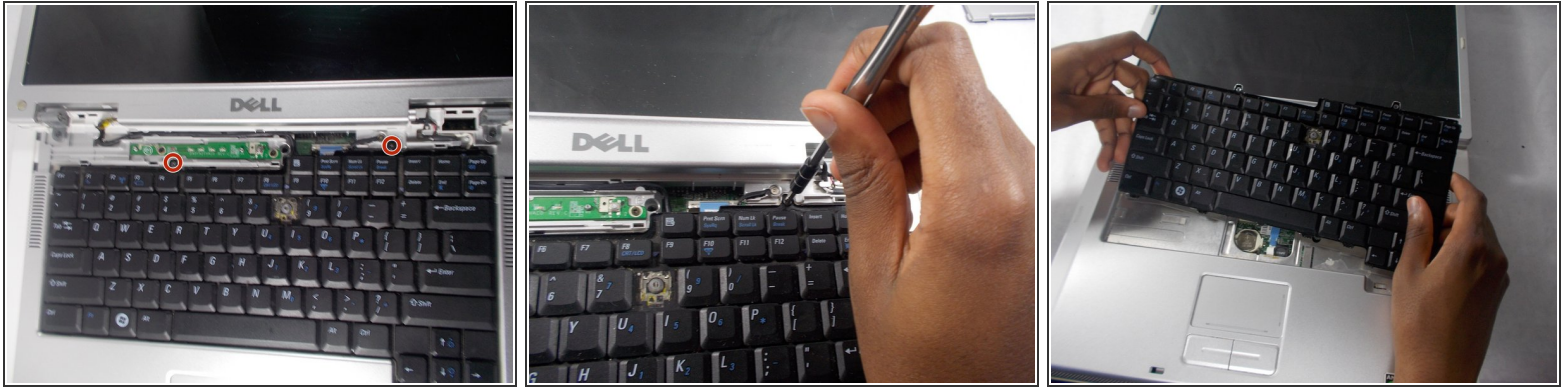


## Step 2 — Hinge Cover



- Open the laptop all the way, rotating the display so that it is level with the surface that you are working on.
- Insert the spudger underneath the groove on the right side of the hinge cover.
- Push up to pry the edge of the hinge cover out.
- Lift up to release the hinge cover from the laptop, working from right to left.

## Step 3 — Keyboard



- Remove the two 5mm JIS #1 screws from the top of the keyboard.
  - Lift the top of the keyboard up and pull the keyboard away from the laptop.
- ⚠ Be sure not to break the ribbon connector that attaches the keyboard to the laptop.

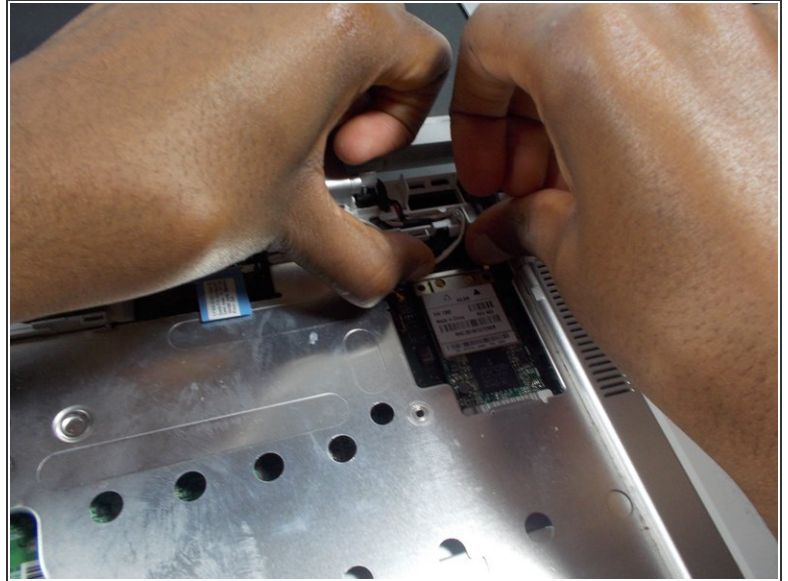
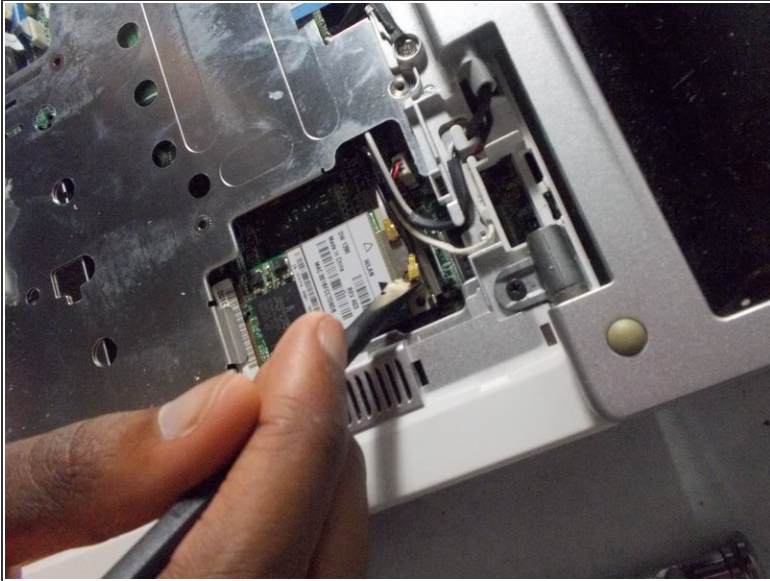
## Step 4



- Open the latch holding the ribbon from the top
- Remove the keyboard from the laptop.



## Step 5 — Wireless Mini-Card



- Remove the two wires from their connections.
- Pull the metal tabs securing the wireless mini-card to the back of the laptop until the card pops up.
- Remove the wireless mini-card from the laptop.

To reassemble your device, follow these instructions in reverse order.