



Written By: Erik Sanchez



INTRODUCTION

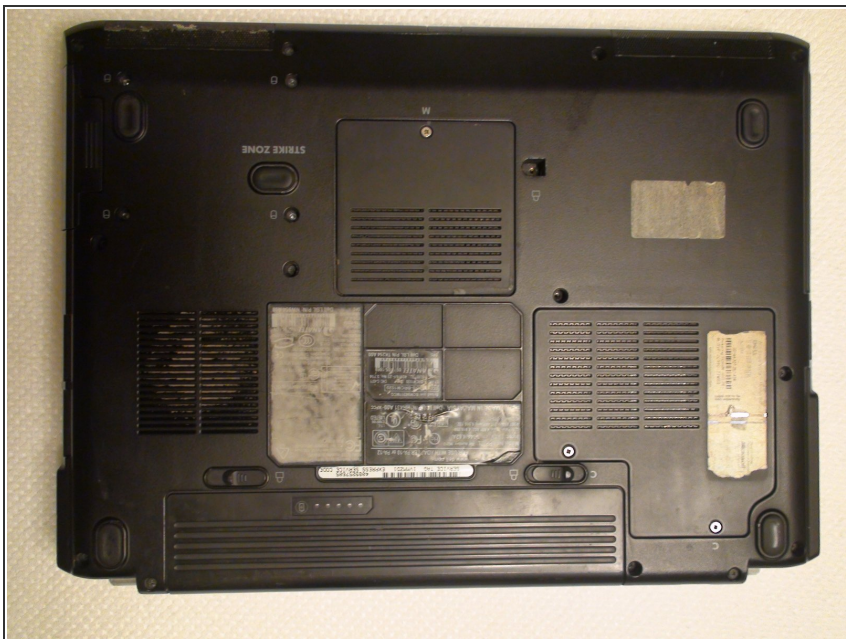
This guide will show you how to prepare the computer for the removal of the panel underneath the keyboard.



TOOLS:

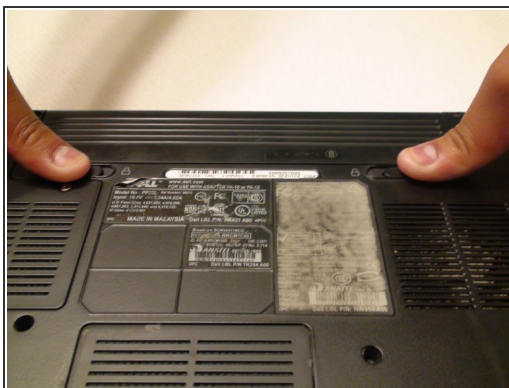
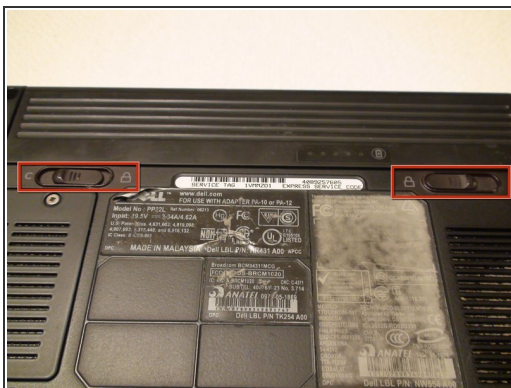
- [Phillips #1 Screwdriver](#) (1)
-

Step 1 — Battery



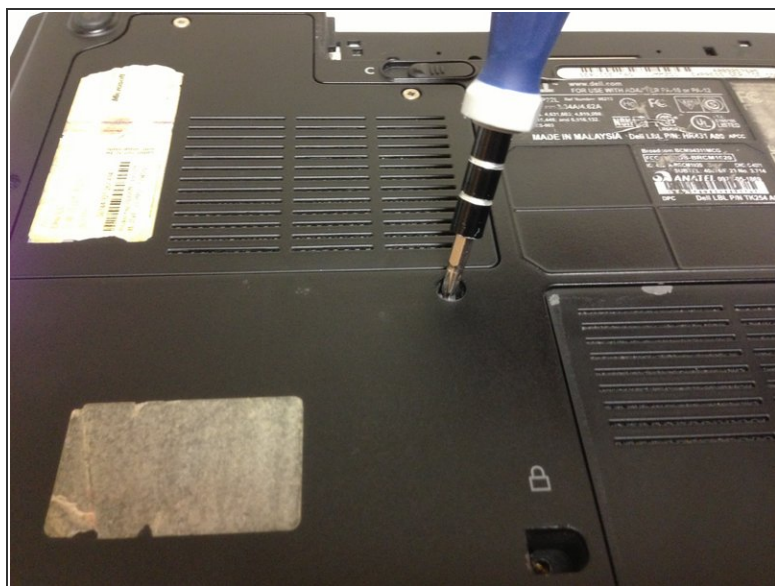
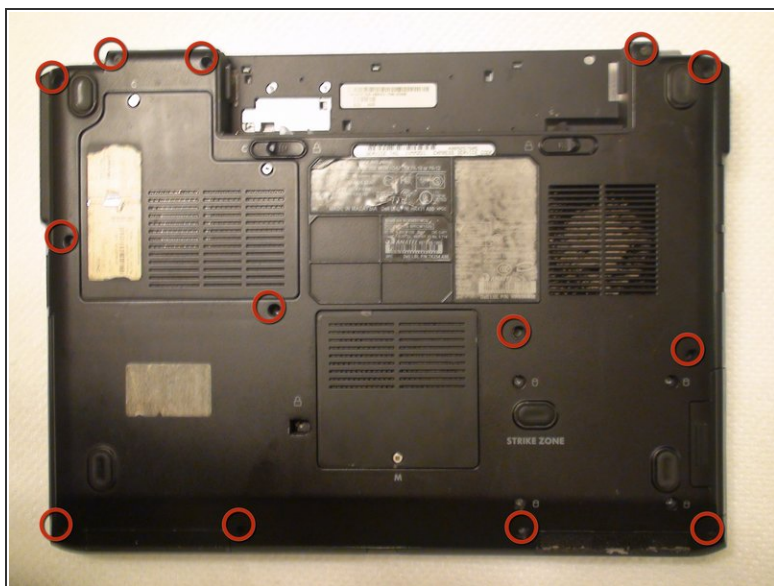
- Rotate the laptop so its bottom is facing up.

Step 2



- Identify the lock mechanisms holding the battery in place.
- Slide each button outward with your fingers to disengage the battery.
- Pull the battery off with your hand to separate it from the laptop.

Step 3 — Bottom Panel



- Locate the thirteen 10 mm Phillips #1 screws securing the bottom panel of the laptop.
- Remove the thirteen indicated screws with a Phillips #1 screwdriver.
- ⓘ With the screws removed you can now remove the panel underneath keyboard.

To reassemble your device, follow these instructions in reverse order.