



Dell Inspiron 1525 Central Control Cover Replacement

Replace the central control cover on a Dell Inspiron 1525.

Written By: Miroslav Djuric



INTRODUCTION

Use this guide to help you replace the Central Control Cover on a Dell Inspiron 1525.



TOOLS:

- [Phillips #1 Screwdriver](#) (1)
-

Step 1 — Battery



- Locate the battery release switch on the bottom of the laptop.

Step 2



- Slide the battery release switch away from the lock symbol until you hear the battery click.
- Slide the battery towards the back of the laptop until it comes free.

Step 3 — Central Control Cover



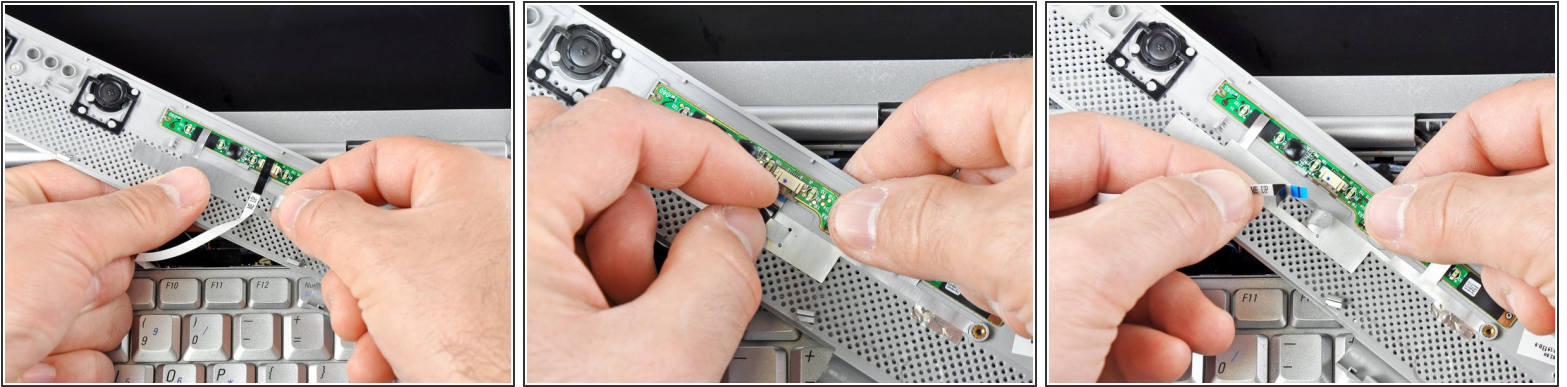
- Remove the two 4.00 mm Phillips #1 screws from the battery tray.

Step 4



- Insert the flat end of a spudger into the slot on the right side of the central control cover and pry it up.
 - Carefully pull the central control cover up along its edges.
- ⚠ Do not attempt to completely remove the cover, as it is still attached via a ribbon cable.

Step 5



- Peel back the silver tape securing the ribbon cable to the cover.
- Pull the small brown latch on the ribbon cable connector out.
- Disconnect the ribbon cable to completely free the central control cover.

To reassemble your device, follow these instructions in reverse order.