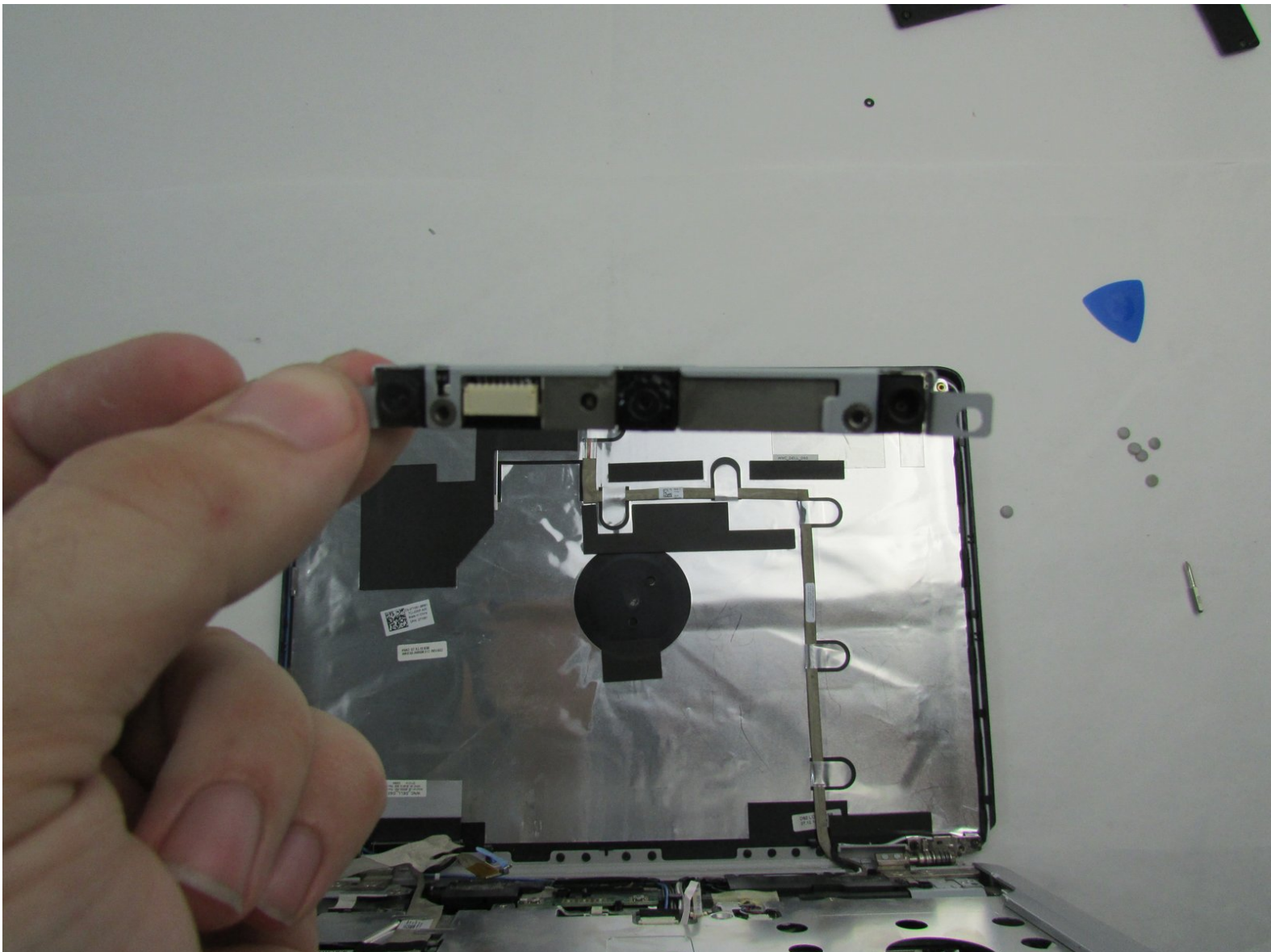




# Dell Inspiron 1526 Webcam Replacement

In this guide we will be replacing the Dell Inspiron 1526 webcam.

Written By: Ahmed Alshamsi





## TOOLS:

- [Phillips #1 Screwdriver](#) (1)
- [Tweezers](#) (1)
- [Spudger](#) (1)
- [iFixit Opening Picks set of 6](#) (1)
- [iFixit Opening Tools](#) (1)

## Step 1 — Battery



- Slide the unlock button to the left to release the battery.
- Slide the battery away from the laptop to remove.
- ❗ The unlock button is located on the bottom of the laptop.

## Step 2 — Keyboard



- Loosen the two 3.5mm Phillips #1 screws in the battery bay.

## Step 3



- Flip the laptop over.
- Lift the control cover by prying the right side of the cover with an iFixit opening tool.

## Step 4



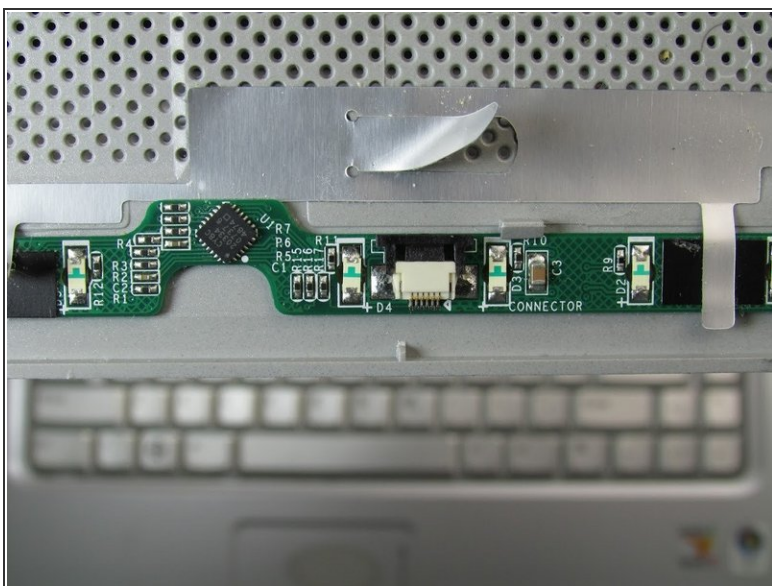
- Carefully lift the control cover up and forward to reveal a single ribbon cable.

## Step 5



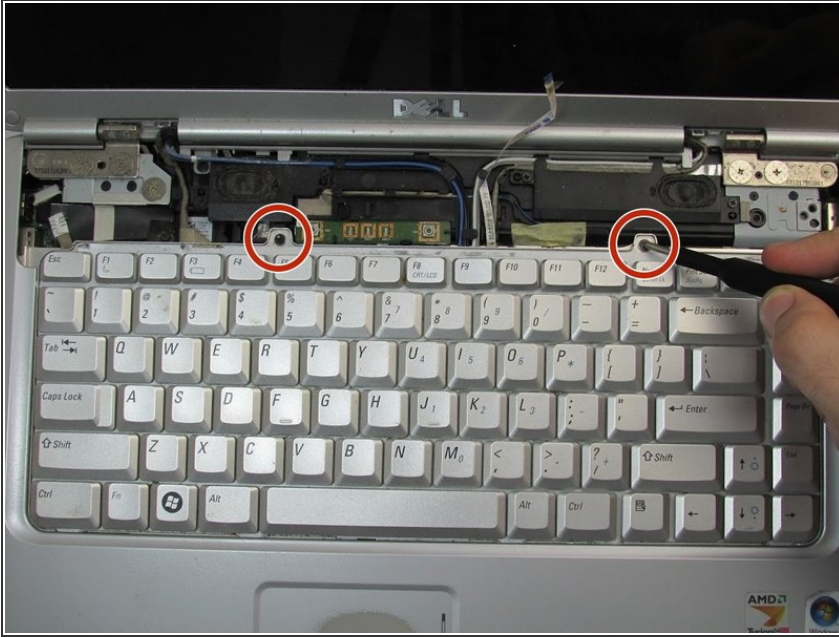
- Use tweezers to squeeze the tabs on the connector and remove the ribbon cable.

## Step 6



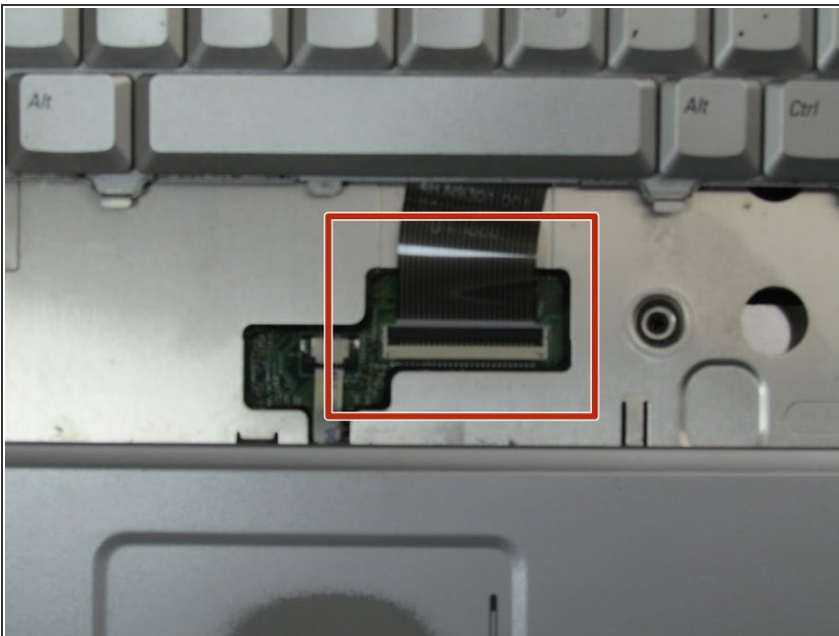
- Remove the control cover.

## Step 7



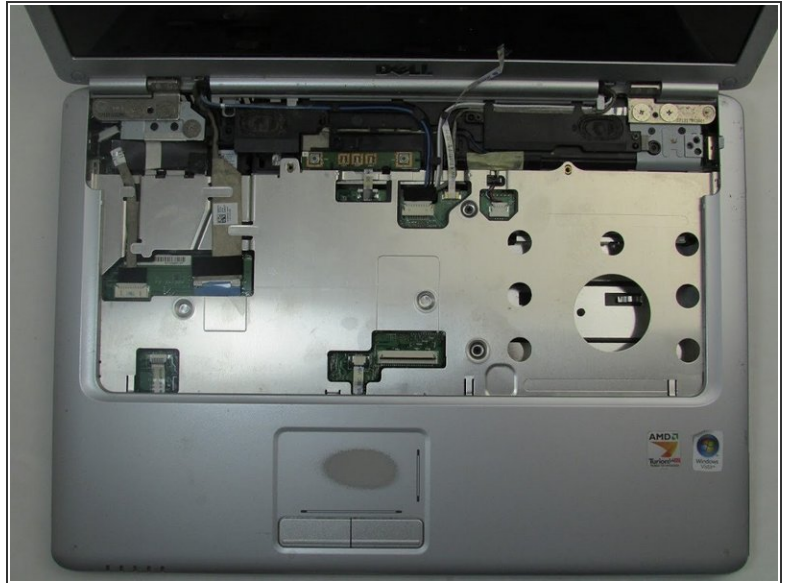
- Remove the two 3mm Phillips #1 screws at the top of the keyboard where the control cover was.

## Step 8



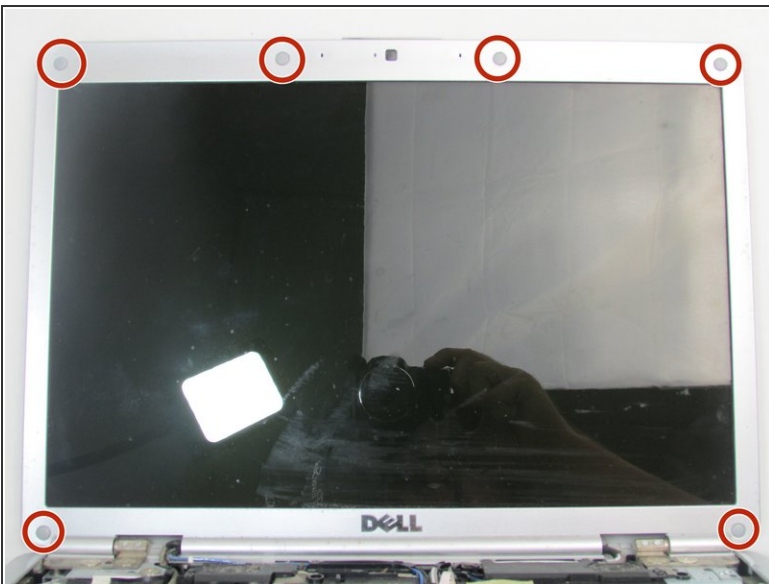
- Lift the keyboard gently from the top, but do not remove completely.
- Looking under the keyboard, towards the touch-pad in the center, lift up the black tab on the connector with tweezers for the keyboard ribbon cable.

## Step 9



- Remove the keyboard.

## Step 10 — Screen



- Remove the six plastic pads around the bezel using an iFixit opening pick.
- Remove the six 3mm Phillips #0 screws under each pad.

## Step 11



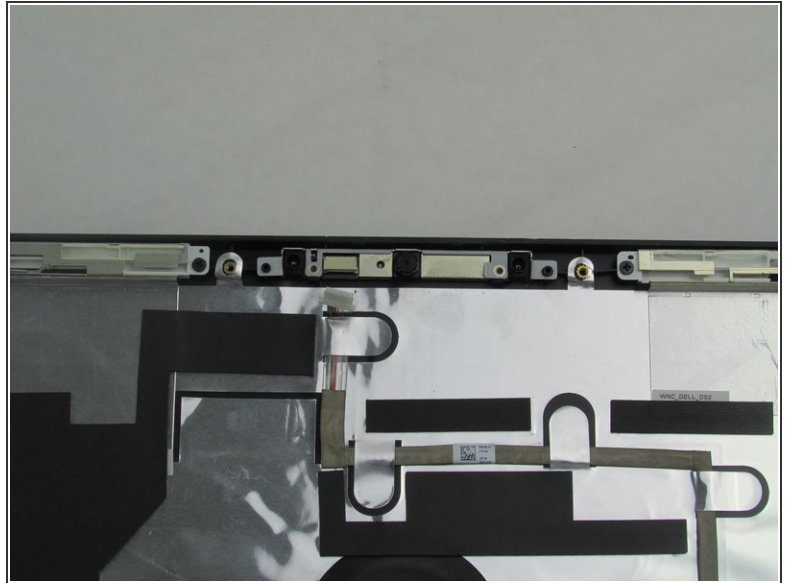
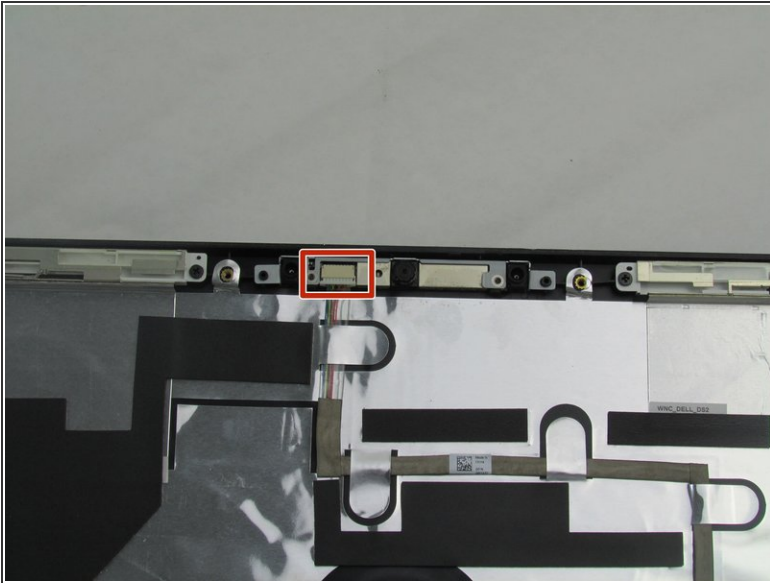
- Open the computer so that it rests flat on the table.
- Separate the bezel from the black plastic frame using a spudger.
- ⓘ There are a dozen snaps around the perimeter of the bezel and there are two between the pivot joints of the laptop.

## Step 12



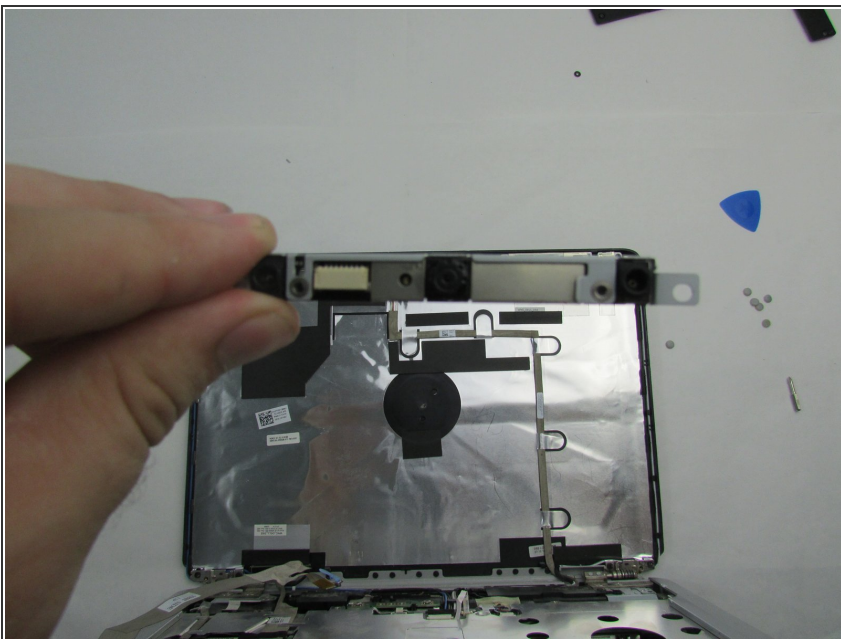
- Remove the two 3mm Phillips #1 screws at the bottom of the display panel.
- Lift the display slightly from the top, then pull outwards.
- Flip the display panel around to the back.
- Disconnect the connector and remove the ribbon cable.

## Step 13 — Webcam



- Detach the webcam connector.

## Step 14



- From both sides, pry and pull upwards from the back of the display cover.
- ⓘ This module has no screws affixing it to the display cover; it is held in by snapping it into the plastic brackets.

To reassemble your device, follow these instructions in reverse order.