



Dell Inspiron 1545 Center Control Cover Replacement

The Center Control Cover is mostly aesthetic but it serves as a prerequisite for more complex replacement guides.

Written By: Nathan Lemay



INTRODUCTION

The Center Control Cover has no real function except for protecting the more complicated components of the laptop. If the laptop is dropped and this component is cracked it may need to be replaced.



TOOLS:

- [Phillips #1 Screwdriver](#) (1)
 - [iFixit Opening Tools](#) (1)
-

Step 1 — Battery



- ✦ Before attempting to remove the battery ensure that the laptop is disconnected from all power sources and turned off.
- Turn the laptop over to its back.

Step 2



- Slide the release latch while simultaneously pulling backwards on the battery.

Step 3



- Slide the battery out of the battery bay.

Step 4 — Center Control Cover



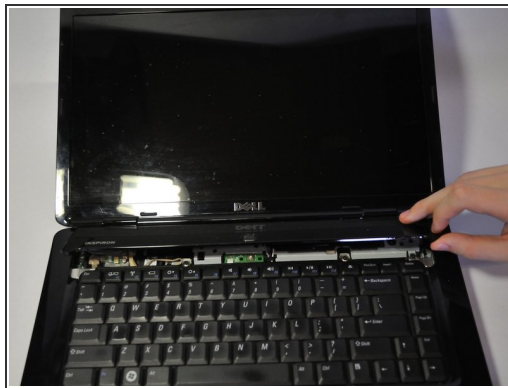
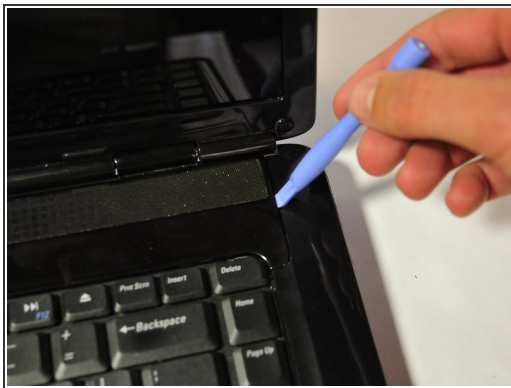
- After removing the battery, remove the two screws (3mm Phillips #1) beneath it. These screws hold the Center Control Cover in place.

Step 5



- Flip the laptop over to the front and open the display as far as possible.

Step 6



 The Center Control Cover is VERY fragile, be careful when using prying tools.

- Pry the Center Control Cover from the laptop. On the right there is a small divot, it is advised that you start removing the panel from here.
- Carefully lift the Center Control Cover away from the laptop.

To reassemble your device, follow these instructions in reverse order.