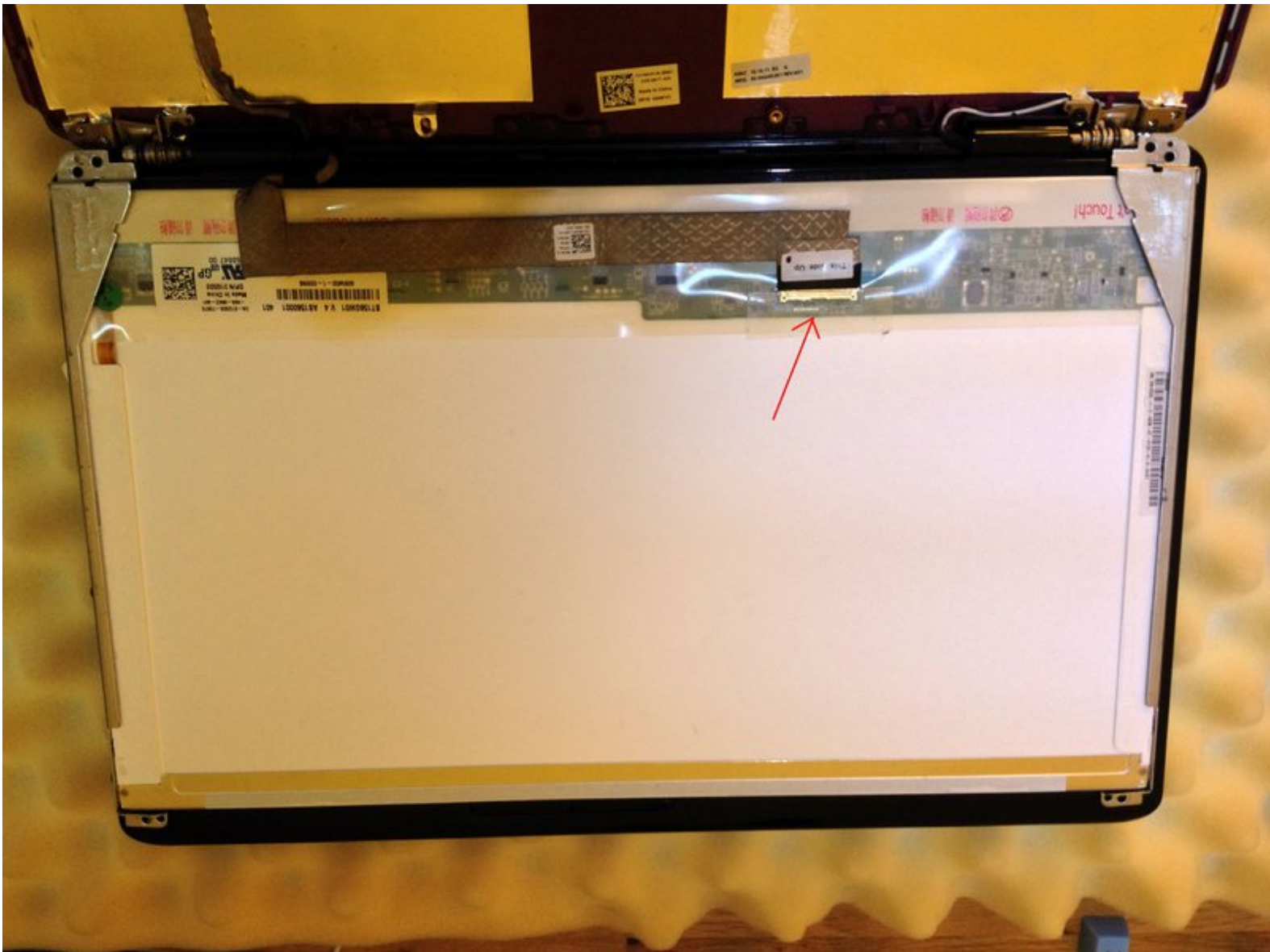




Dell Inspiron 1545 LCD Replacement

Replace the LCD Screen.

Written By: Piers Lincoln



INTRODUCTION

If the screen itself is cracked or broken it may be necessary to replace the LCD screen.



TOOLS:

- [Phillips #1 Screwdriver](#) (1)
- [iFixit Opening Tools](#) (1)



PARTS:

- [15.6" PC Laptop LCD N156B6-L0B](#) (1)

Step 1 — Display



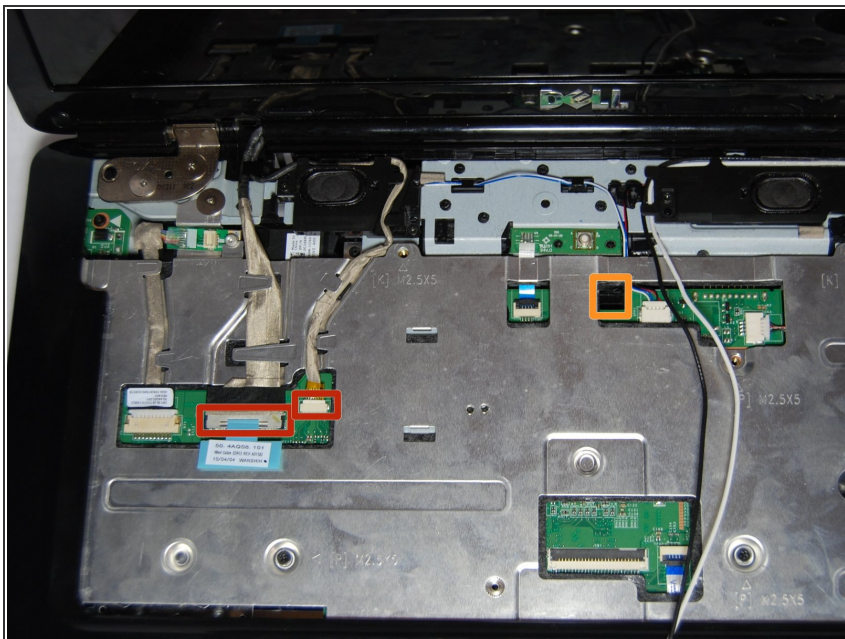
- Remove the two screws (5.5mm, Phillips #1) from the laptop base.

Step 2



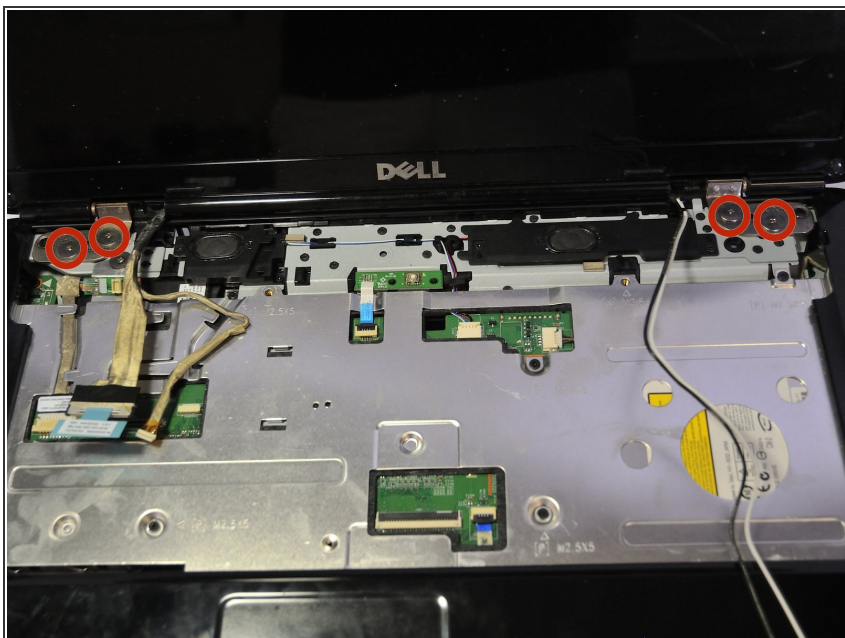
- Remove black and white wires from the WLAN that lead to the display by pulling straight up.
- Unwind the wires so they can be freely pulled through in the next step.

Step 3



- Turn the laptop over to its standard position.
- Disconnect the Wed cable and Camera1 cable from the respective Motherboard connectors as marked. Unsecure the wires so they are loose.
- Pull the black and white wires previously connected to the WLAN through the hole.

Step 4



- Remove the Camera1 cable, the Wed cable, and the black and white wires from the routing guides.
- Remove the four screws (5mm Phillips #1) (two on either side) that secure the display assembly.

Step 5



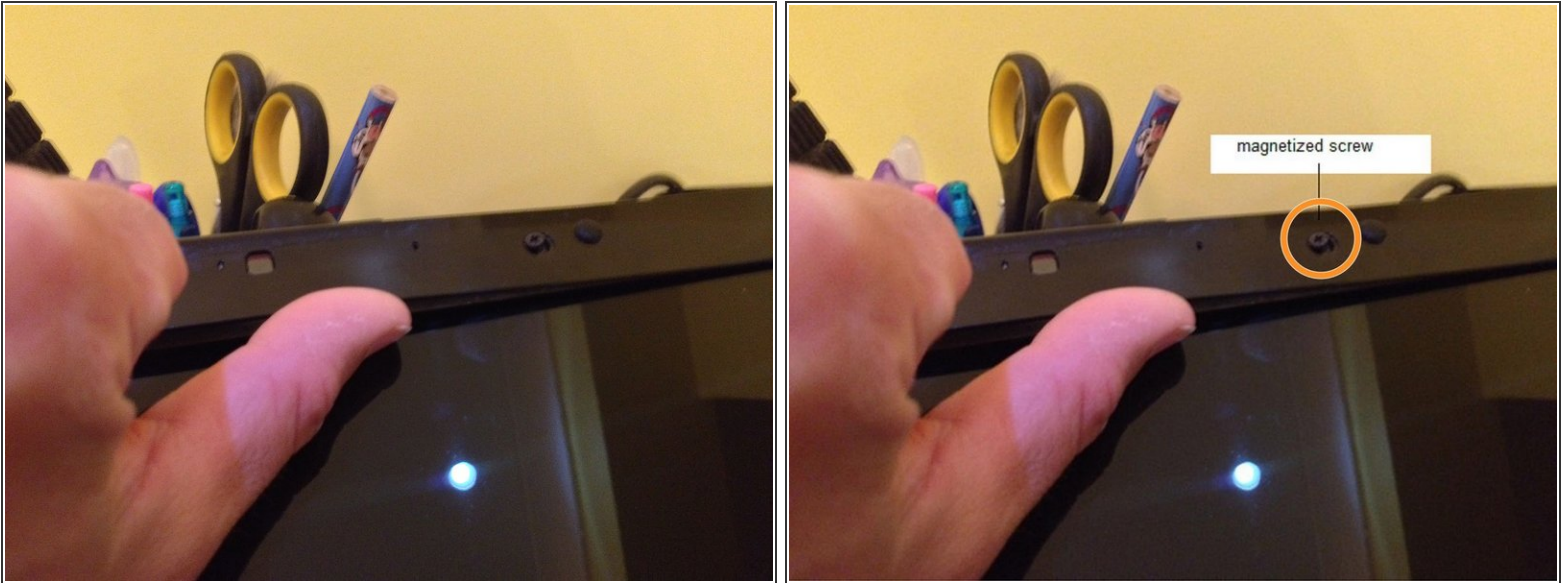
- Lift the display assembly off the computer.

Step 6 — LCD



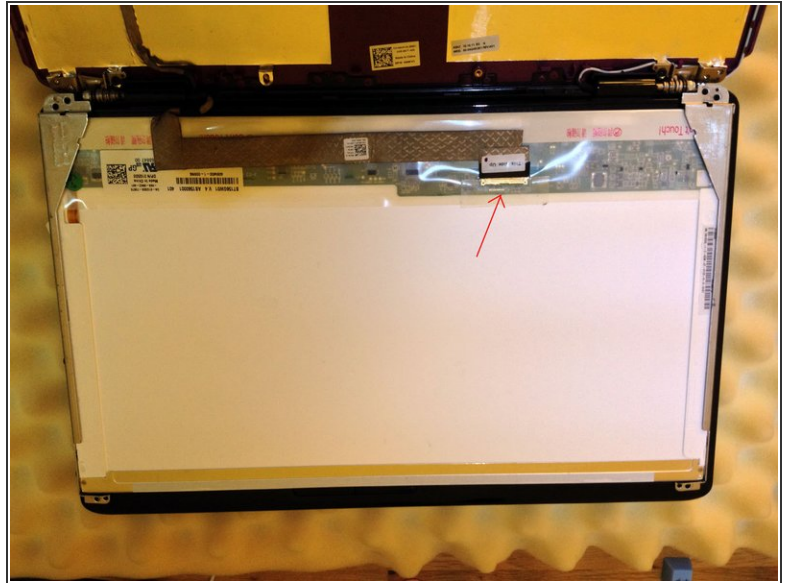
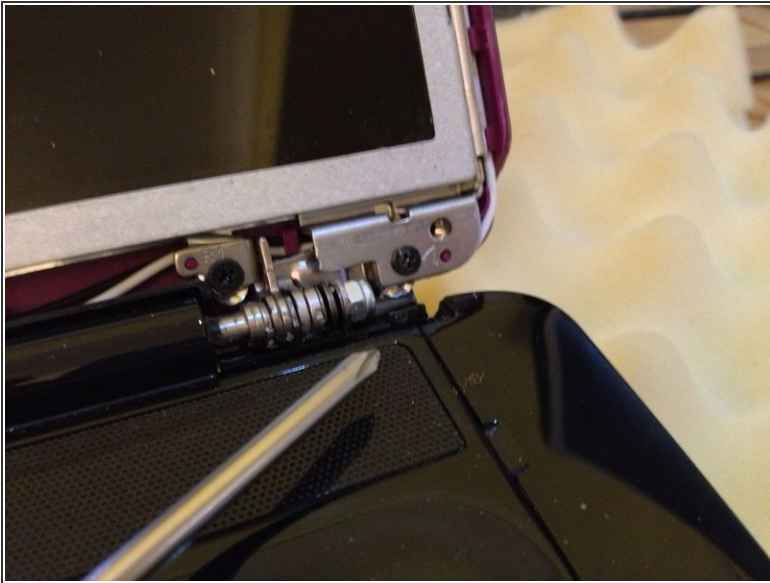
- Lift up the six Rubber feet. There is one in each corner at the bottom of the screen, and four along the top of the screen.
- Remove the screws underneath. Note: one screw at the top and right of center may be magnetized and not come out.

Step 7



- Using your thumb, starting at the top, push your thumb from the inside of the bezel outwards and the plastic pops off. Work your thumb round repeating the process on both top and sides until you get to the bottom.
- The bottom has double sided tape along the metal strip where the plastic meets the bezel. Separate this and then push outwards again.
- The whole bezel should now be free and you can remove it from the laptop.

Step 8



- At the bottom, find the two hinges. There is a small triangle mark on both hinges. You need to remove the screws next to the triangle on the hinges (only one each side) and the screen is completely free of the chassis.
- If you have a CCFL LCD panel, you may have to unscrew the inverter board.
- Carefully rotate the panel out the lid cover.
- If a CCFL LCD, the ribbon cable will be securely taped to the connector at the top as well as at the bottom edge of the panel.
- Disconnect the ribbon cable from the screen at the bottom (larger connector) to completely remove the screen. Lift up lock bar (blue tab attached) then gently pull ribbon connector out.
- Remove the 2 brackets attached to the screen by removing 3 screws on the side of each bracket.
- In my example, the product numbers of the screen are as follows :- BT156gw01 v.4 . If you put this number into eBay you will have several alternatives returned.
- Fitting is reversal of steps so far.

To reassemble your device, follow these instructions in reverse order.