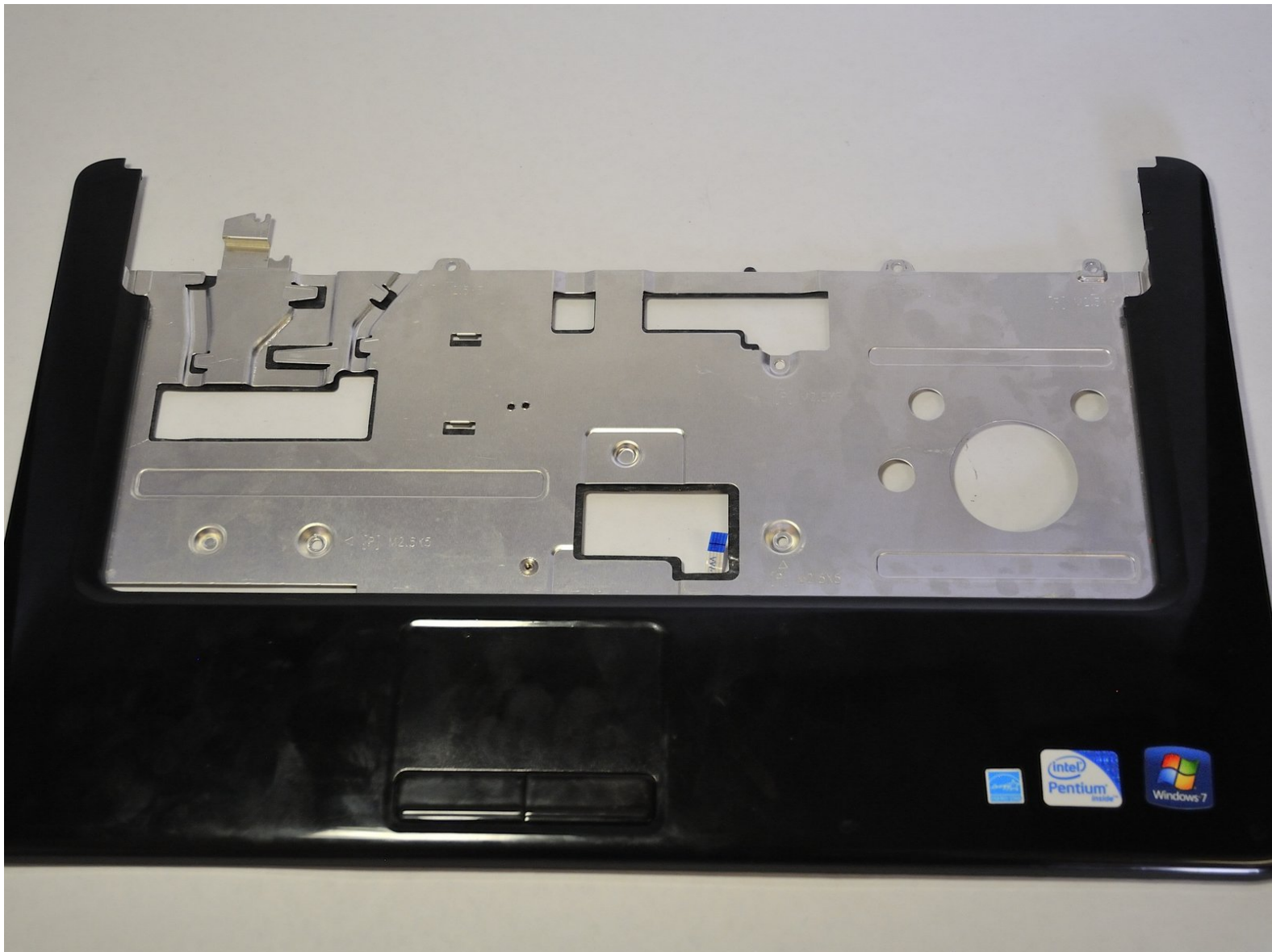




Dell Inspiron 1545 Palm Rest Replacement

This will cover the removal of the palm rest.

Written By: Nathan Lemay



INTRODUCTION

The palm rest is the top cover for the laptop which is responsible for holding the laptop's touch pad. You can use this guide to clean the touch pad or to replace a broken touch pad by purchasing a new palm rest.



TOOLS:

- [Phillips #1 Screwdriver](#) (1)
- [iFixit Opening Tools](#) (1)



PARTS:

- [Dell Inspiron 1545 Palmrest](#) (1)

Step 1 — Battery



- ✦ Before attempting to remove the battery ensure that the laptop is disconnected from all power sources and turned off.
- Turn the laptop over to its back.

Step 2



- Slide the release latch while simultaneously pulling backwards on the battery.

Step 3



- Slide the battery out of the battery bay.

Step 4 — Base Cover



- Unscrew the four screws (3mm Phillips #1) that hold the base cover in place.
- ⓘ The screws are connected to the base cover by a washer and do not remove from the base cover.

Step 5



- Carefully lift the base cover vertically away from the laptop.

Step 6 — Center Control Cover



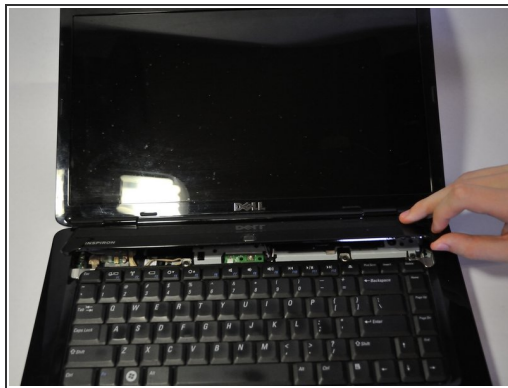
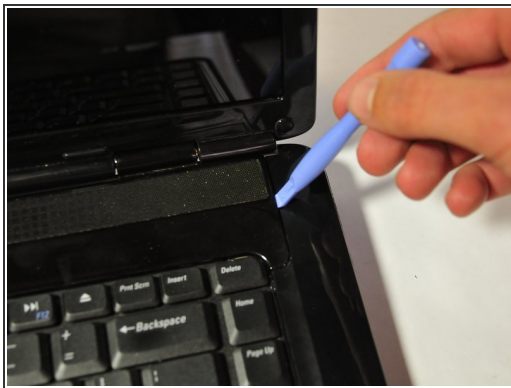
- After removing the battery, remove the two screws (3mm Phillips #1) beneath it. These screws hold the Center Control Cover in place.

Step 7



- Flip the laptop over to the front and open the display as far as possible.

Step 8



 The Center Control Cover is VERY fragile, be careful when using prying tools.

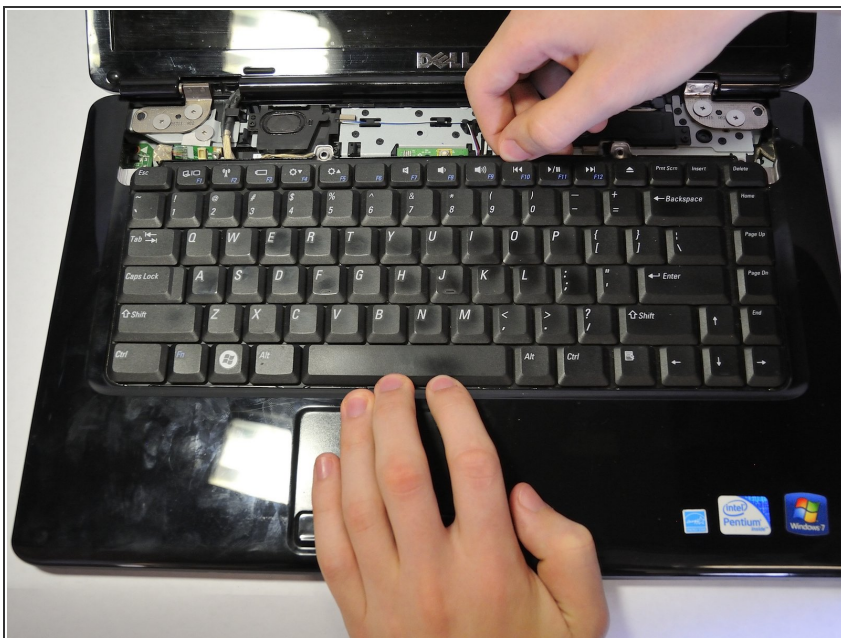
- Pry the Center Control Cover from the laptop. On the right there is a small divot, it is advised that you start removing the panel from here.
- Carefully lift the Center Control Cover away from the laptop.

Step 9 — Keyboard



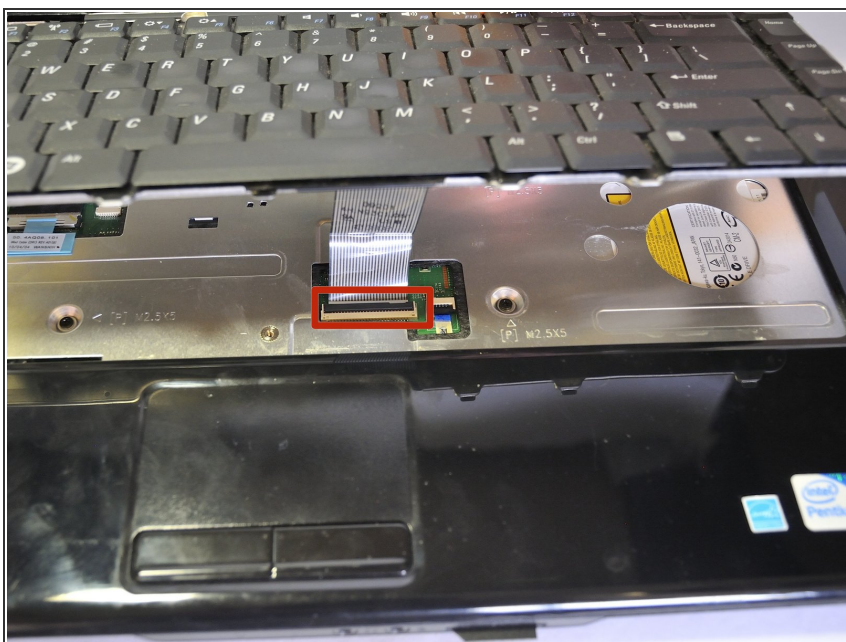
- Remove the two screws (5mm Phillips #1) at the top of the keyboard.

Step 10



- Slide the keyboard out and away from the laptop and lift it up to access the keyboard connector.
- ⚠ Do not pull hard on the keyboard while removing it, you may damage the keyboard or the keyboard connector.

Step 11



- Lift the connector latch that secures the keyboard cable to the connector on the motherboard and remove the cable.

Step 12



- Lift the keyboard up and away from the laptop.

Step 13 — Palm Rest



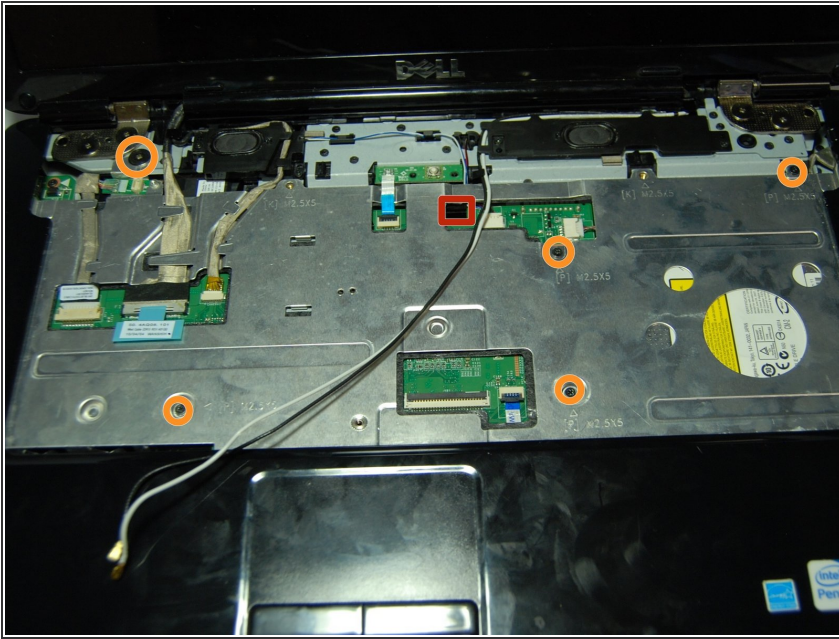
- Remove the 11 screws (5mm Phillips #1) from the back of the laptop as marked. One screw is in the middle, by the RAM.

Step 14



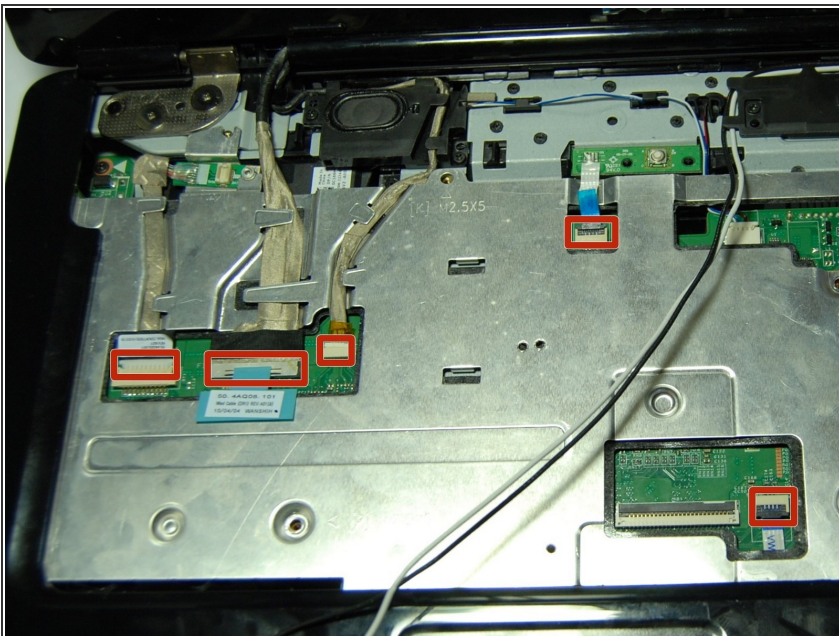
- Remove black and white wires from the WLAN that lead to the display by pulling straight up.
- Unwind the wires from the routing guides.

Step 15




- Turn the laptop back over to its normal resting position and pull the black and white wires previously connected to the WLAN through the hole.
- Remove the 4 smaller screws (5mm Phillips #1) and one screw on the top left (3mm Phillips #1) from the palm rest.

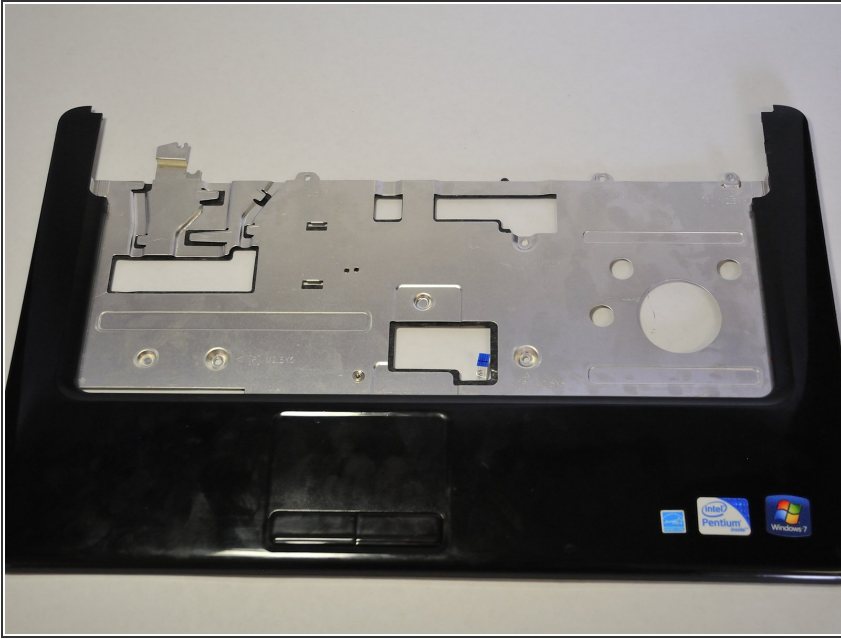
Step 16



- Disconnect the Bluetooth card cable, Wed cable, Camera1 cable, power cable, and touchpad cable from the respective Motherboard connectors as marked. For the Bluetooth cable and Camera1 cable, pull the plugs towards the screen. For the touchpad and power cable, lift the black tab and then pull them out. For the Wed cable, pull the blue tab up.
- Unsecure the wires from the routing guides so they are loose.

-  Pull on the plastic tabs for each connector to help prevent causing damage to the connectors.

Step 17



- To separate the palm rest from the rest of the computer, use a plastic opening tool to lift up the plastic. It is best to start at one point and work your way around.

To reassemble your device, follow these instructions in reverse order.