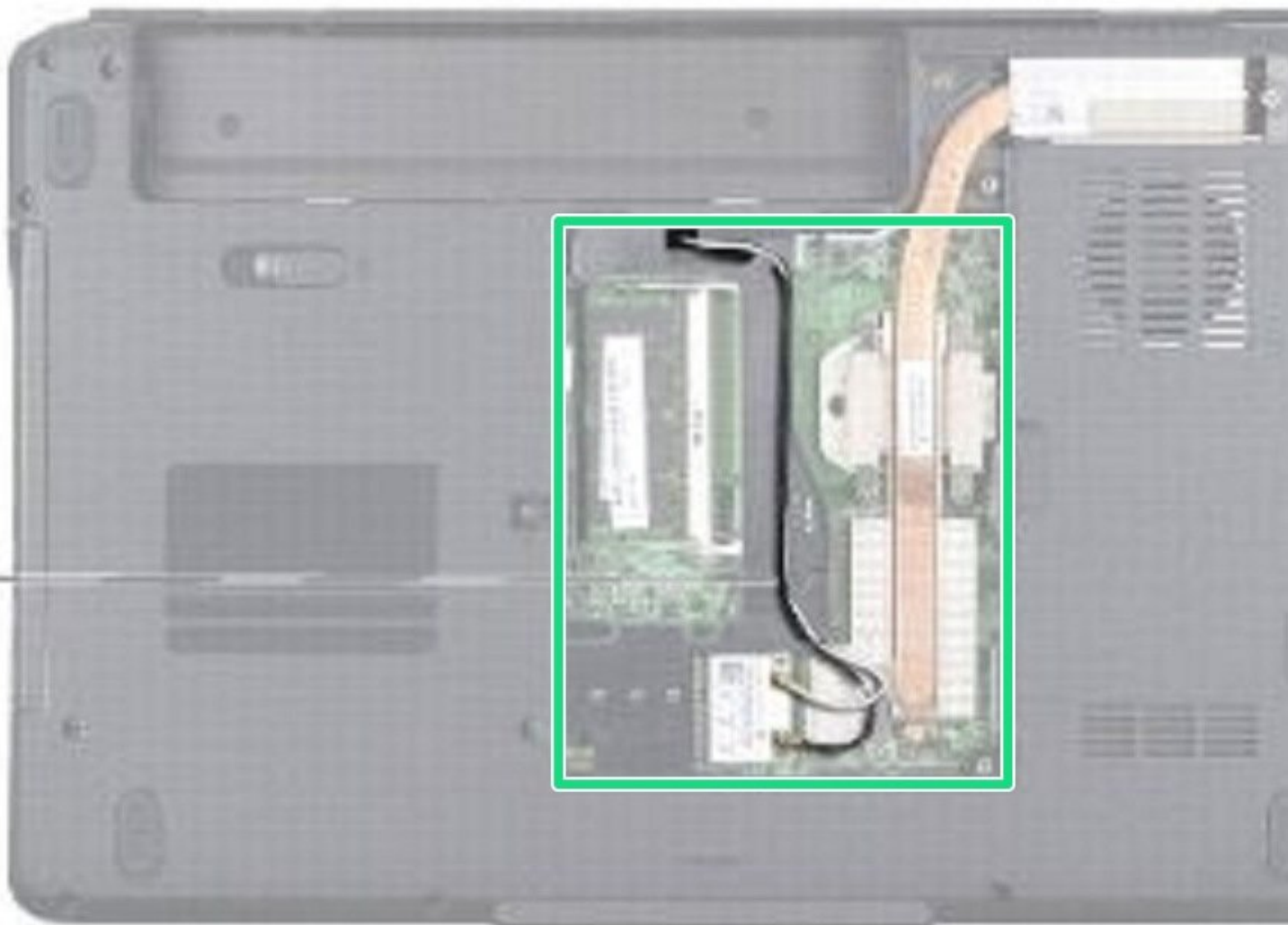




# Dell Inspiron 1546 Display Assembly Replacement

Written By: Terrence15



---

## INTRODUCTION

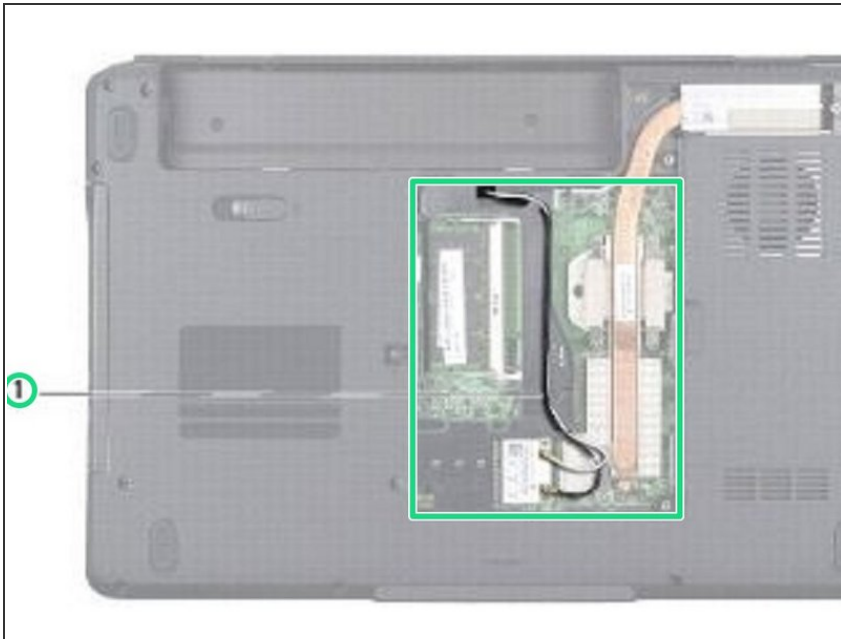
In this guide, we will be showing you how to remove and replace the Display Assembly.



### TOOLS:

- [Phillips #0 Screwdriver](#) (1)
-

## Step 1 — Remove the Cables

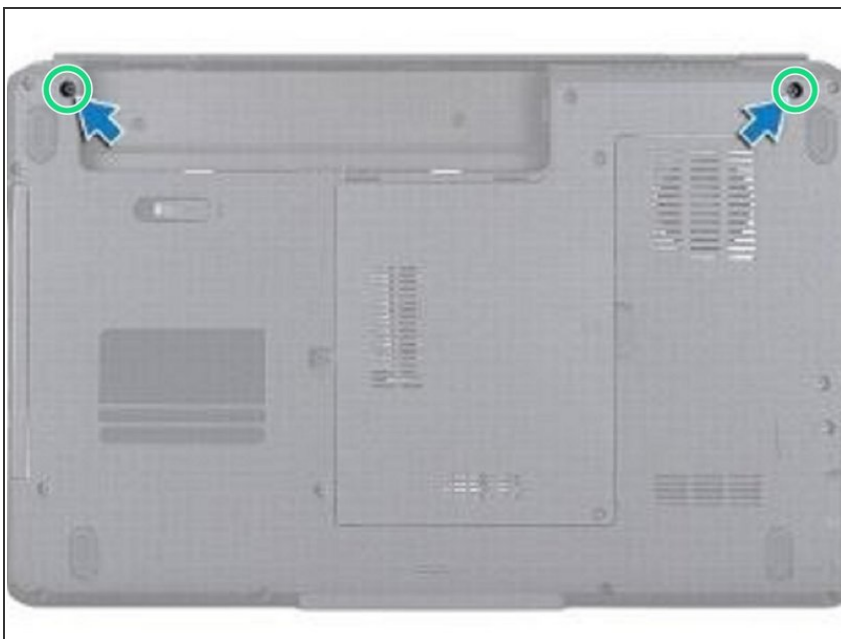


**⚠ WARNING:** Before working inside your computer, read the safety information that shipped with your computer. Follow the procedures in [Before You Begin](#).

**⚠ CAUTION:** To avoid electrostatic discharge, ground yourself by using a wrist grounding strap or by periodically touching an unpainted metal surface (such as a connector on your computer).

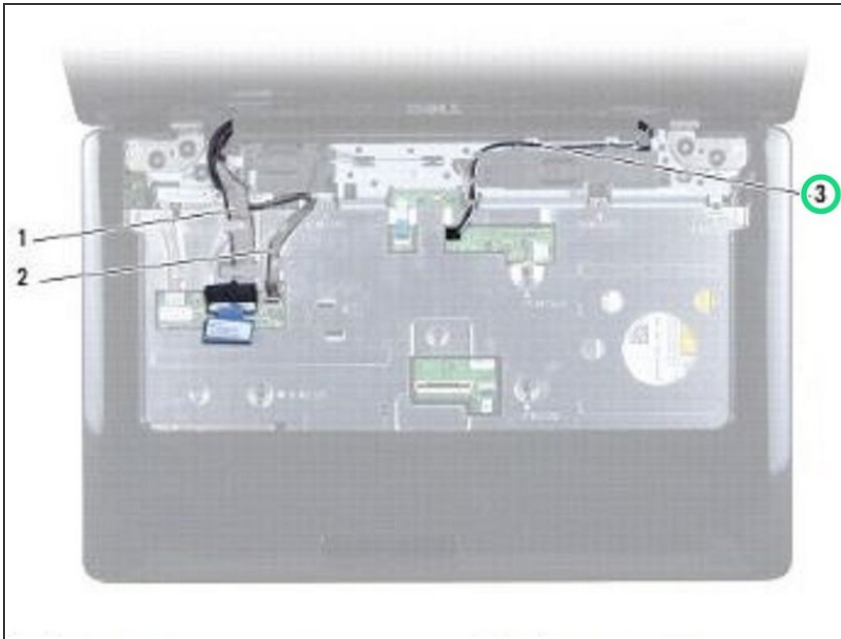
- Make note of the Mini-Card antenna cables routing and remove the cables from the routing guides.

## Step 2 — Remove the Screws



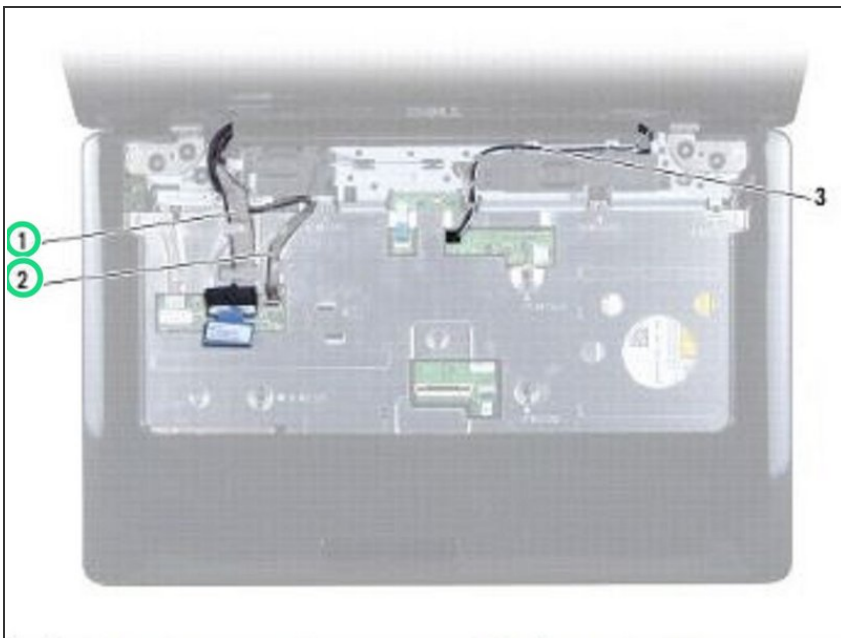
- Remove the two screws from the computer base.

### Step 3 — Dislodge the Cables



- Make note of the Mini-Card antenna cable routing and carefully dislodge the antenna cables from the cable routing slot on the computer. Pull the cables away, so that they are clear of the palm rest.

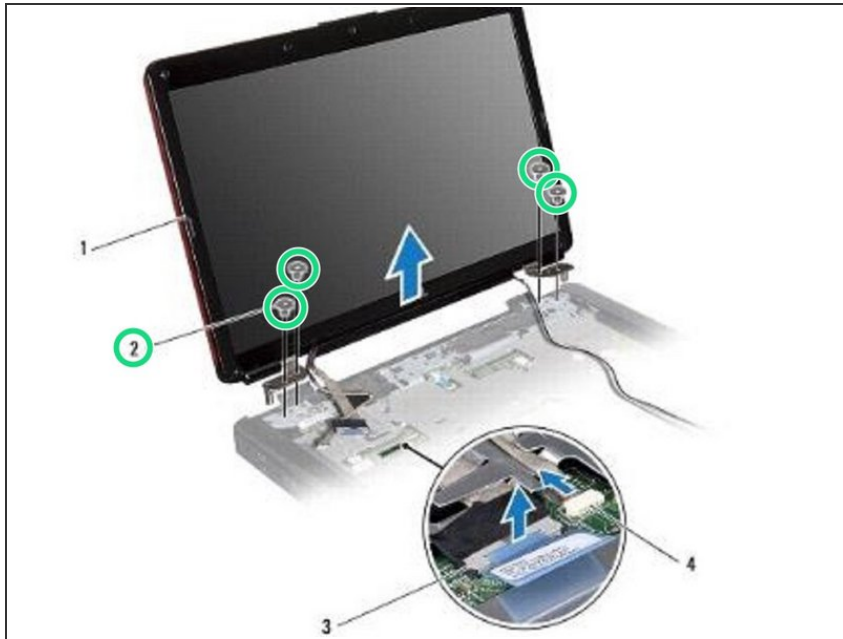
### Step 4 — Disconnect the Cable



- Disconnect the display cable and camera cable from the respective system board connectors and

remove them from their routing guides.

## Step 5 — Remove the Screws



- Remove the four screws that secure the display assembly to the computer base.

## Step 6 — Remove the Display Assembly



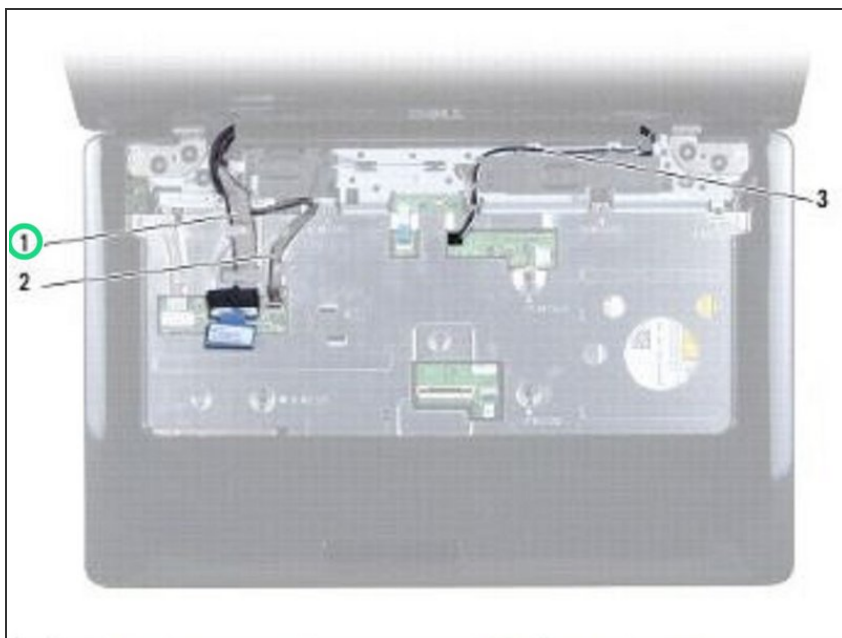
- Lift and remove the display assembly from the computer base.

## Step 7 — Place the Display Assembly



- Place the display assembly in position and replace the four screws that secure the display assembly to the computer base.

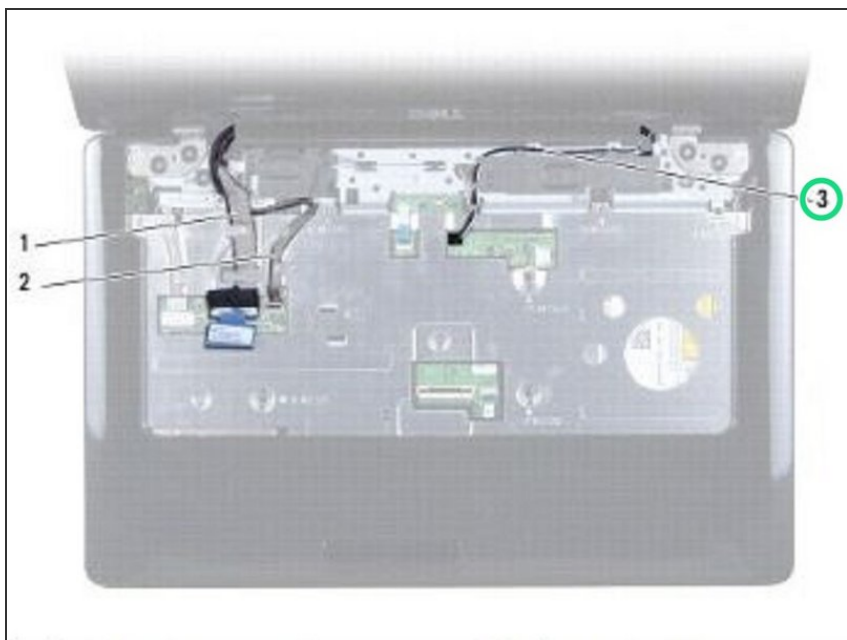
## Step 8 — Route the Display Cable



- Route the display cable and camera cable into their routing guides and connect the cables to the respective system board connectors.

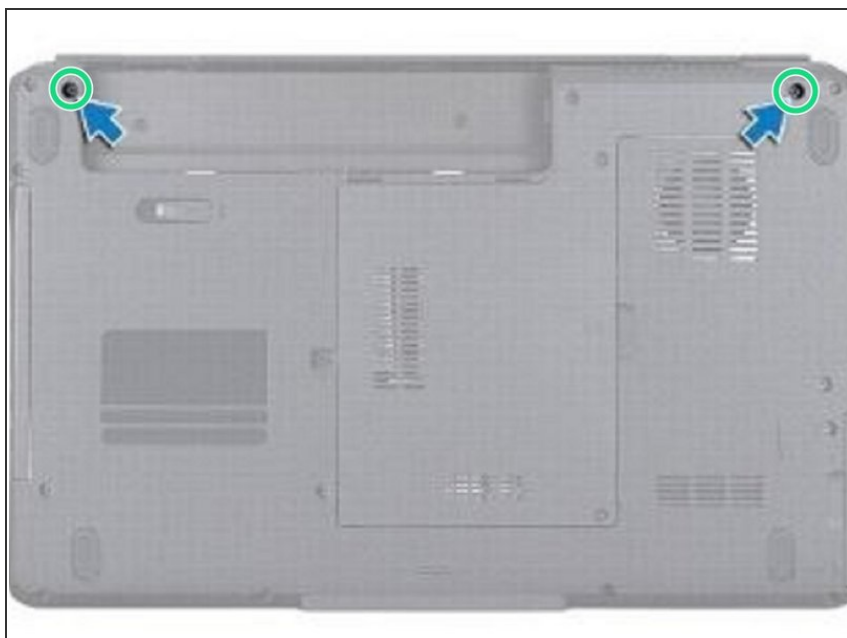


## Step 9 — Route the Antenna Cables



- Route the Mini-Card antenna cables, and guide the cables to the bottom of the computer through the cable routing slot.

## Step 10 — Replace the Screws



- Replace the two screws at the bottom of the computer.