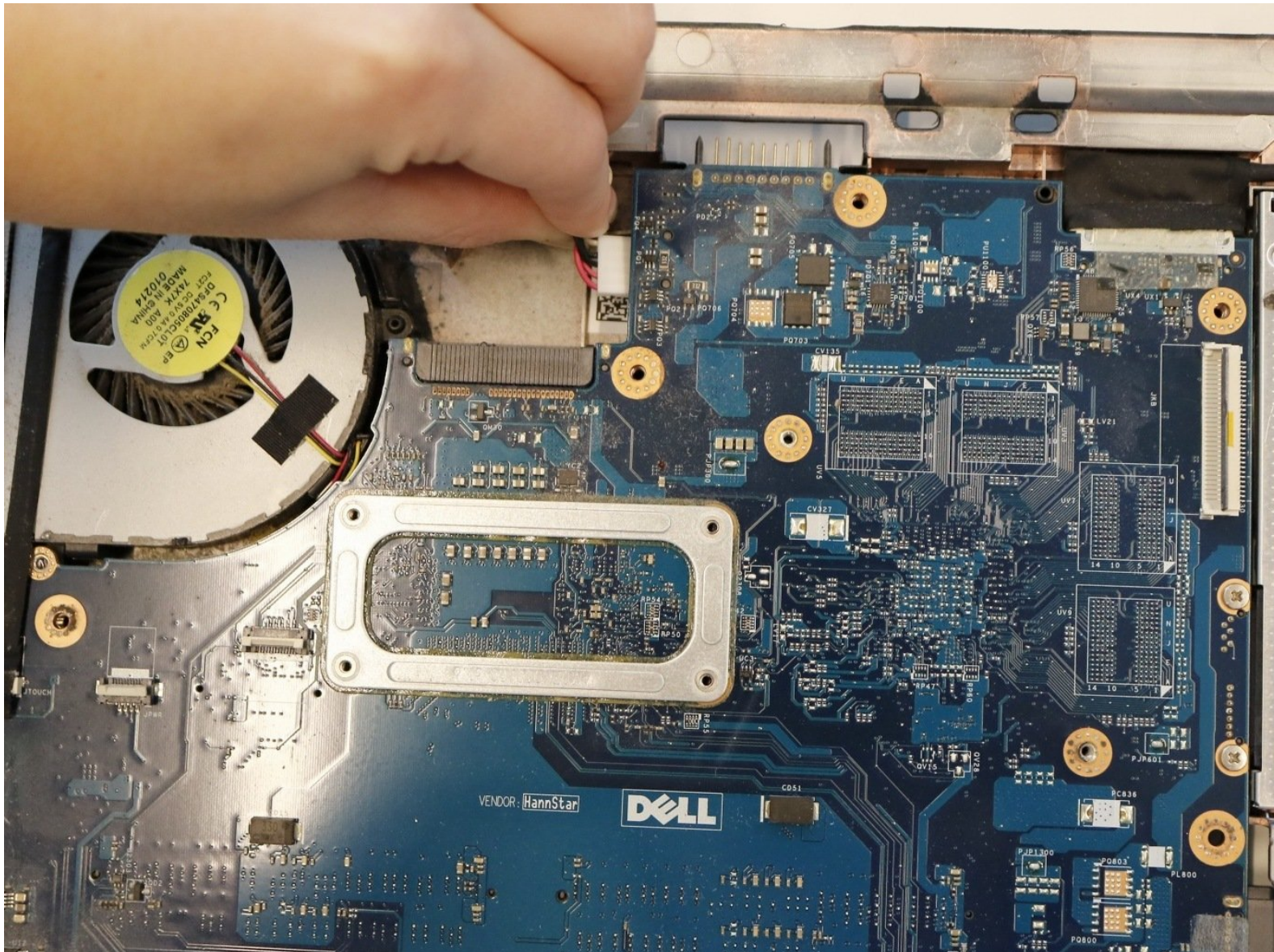




Dell Inspiron 15R 5537 Display Assembly Replacement

How to replace a Dell Inspiron 15R 5537 display assembly.

Written By: Kristen Gismondi






TOOLS:

- [iFixit Opening Tools](#) (1)
- [Phillips #000 Screwdriver](#) (1)
- [Phillips #0 Screwdriver](#) (1)

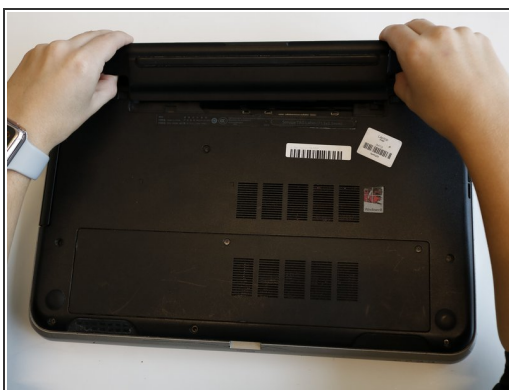
Step 1 — Battery



 Before working inside your computer, read the safety information that shipped with your computer.

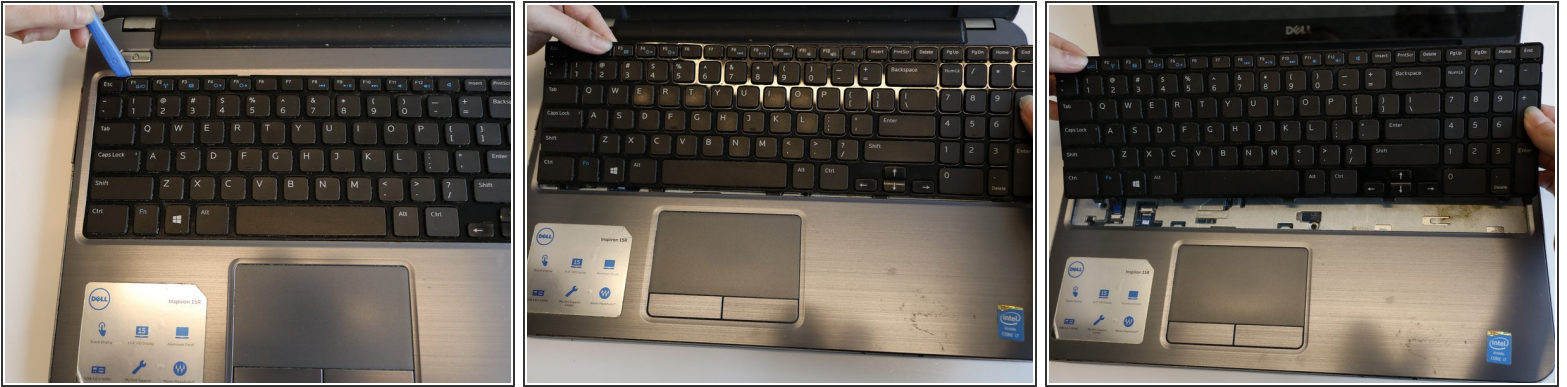
- Close the display and turn over the computer to see the battery locking tabs.

Step 2



- Pull both of the locking tabs outwards until they both click to release the battery.
- Pull the battery out by lifting it from the top and sliding it forward.

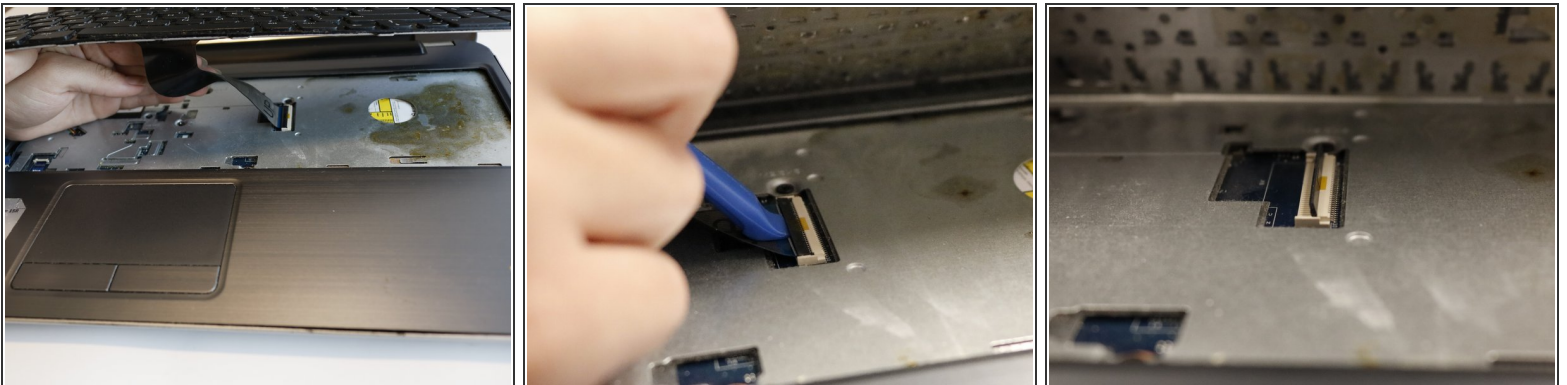
Step 3 — Keyboard



- Turn the laptop over so that the keyboard is facing up.
- Use an opening tool to pry the keyboard from the base of the laptop.
- Once the top of the keyboard is released, slide the keyboard upwards.

⚠ Be sure not to pull the keyboard straight up; this could damage the keyboard ribbon cable.

Step 4



- Use an opening tool to remove the keyboard ribbon from the latch by lifting the tab on top.
- Once lifted, disconnect the ribbon and replace with a new keyboard.

Step 5 — Wi-Fi Module



- Once the keyboard is removed, the Wi-Fi module will be accessible.

Step 6



- Use the opening tool to lift both antenna cables upward from the Wi-Fi module.

Step 7



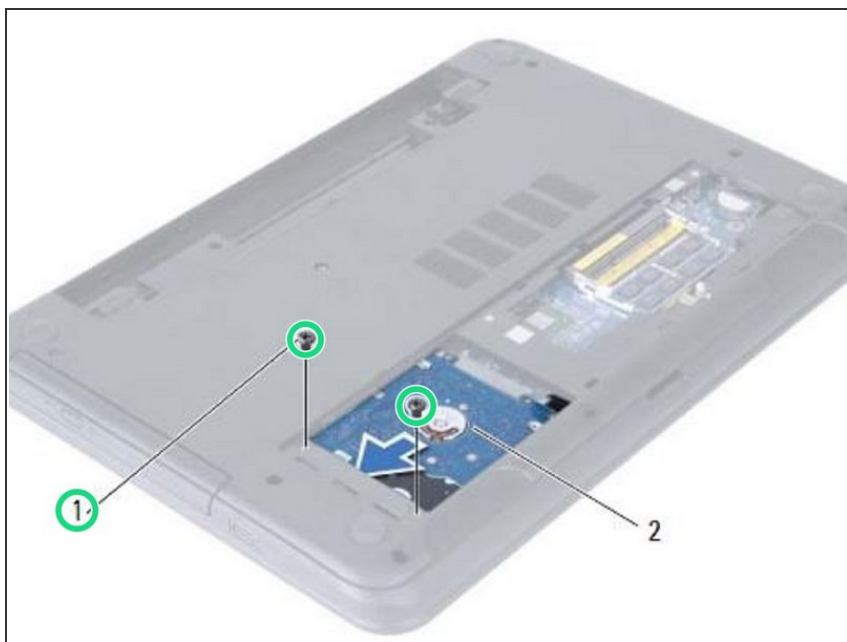
- Remove the 3mm Phillips #000 screw securing the Wi-Fi module.
- Lift the Wi-Fi module up and out of the laptop.

Step 8 — CAUTION



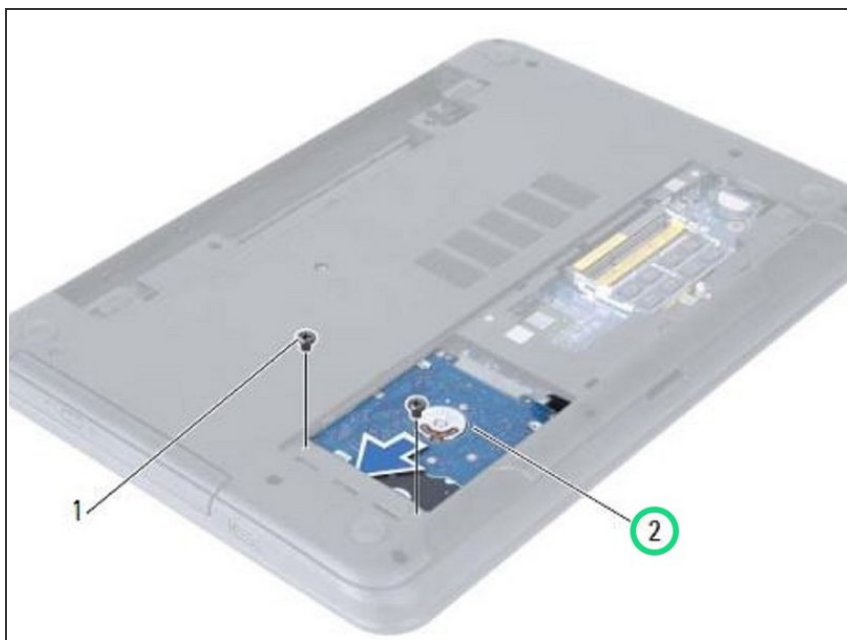
- ⚠ **WARNING:** Before working inside your computer, read the safety information that shipped with your computer and follow the steps in ["Before You Begin"](#). After working inside your computer, follow the instructions in ["After Working Inside Your Computer"](#).
- ⚠ **CAUTION:** To avoid data loss, do not remove the hard drive while the computer is in Sleep or On state.
- ⚠ **CAUTION:** Hard drives are extremely fragile. Exercise care when handling the hard drive.

Step 9 — Remove the Screws



- Remove the screws that secure the hard-drive assembly to the computer base.

Step 10 — Sliding the Hard Drive Assembly



- Slide the hard-drive assembly forward to disconnect the hard-drive assembly from the system board.

Step 11 — Lifting the Hard Drive Assembly



- Using the pull-tab, lift the hard-drive assembly out of the computer base.

Step 12 — Remove the Screws



- Remove the screws that secure the hard-drive bracket to the hard drive.

Step 13 — Lifting the Hard-Drive Bracket



- Lift the hard-drive bracket off the hard drive.

Step 14 — Align the Screw Holes



- Align the screw holes on the hard-drive bracket with the screw holes on the **NEW** hard drive.

Step 15 — Replace the Screws



- Replace the screws that secure the hard-drive bracket to the hard drive.

Step 16 — Placing the Hard Drive Assembly



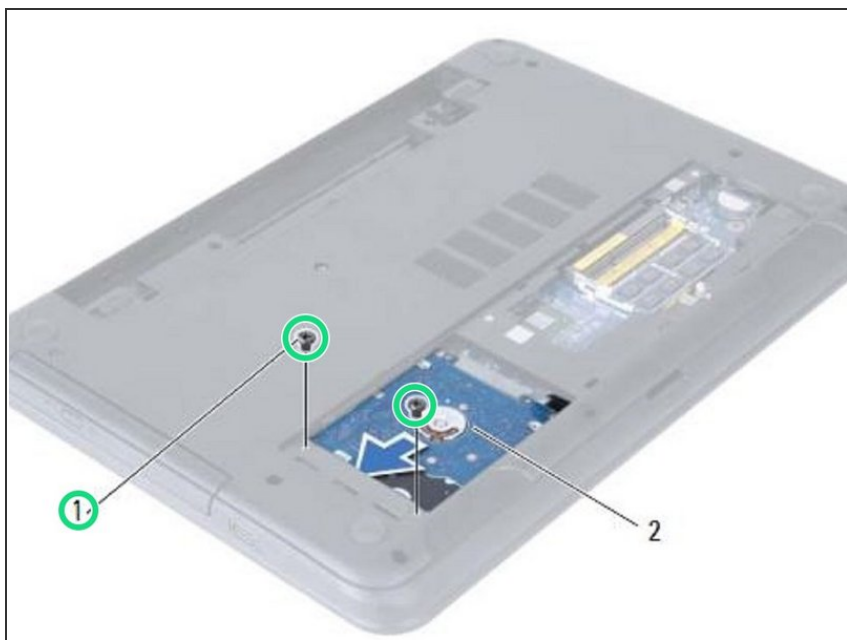
- Slide and place the hard-drive assembly in the hard-drive bay.

Step 17 — Sliding the Hard-Drive Assembly



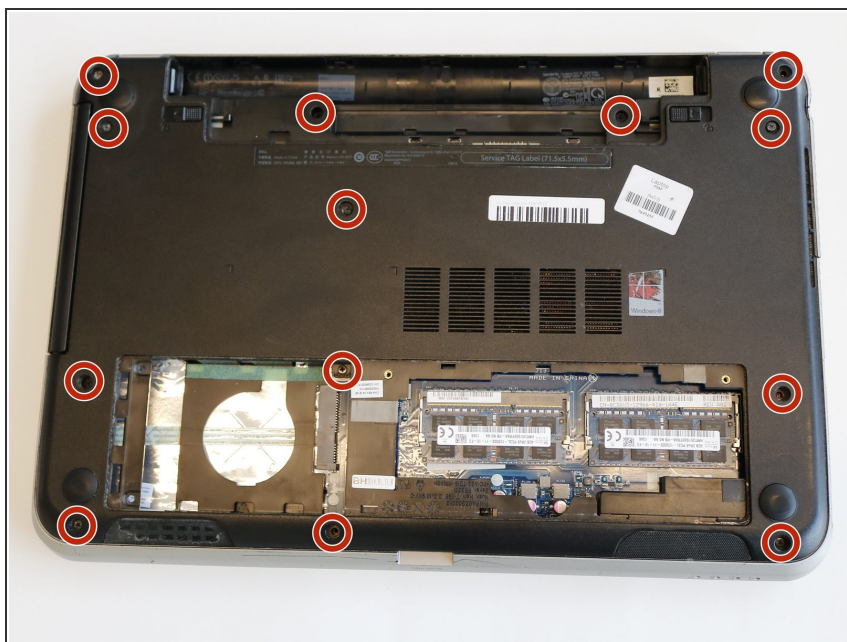
- Slide the hard-drive assembly backward to connect the hard-drive assembly to the system board.

Step 18 — Replace the Screws



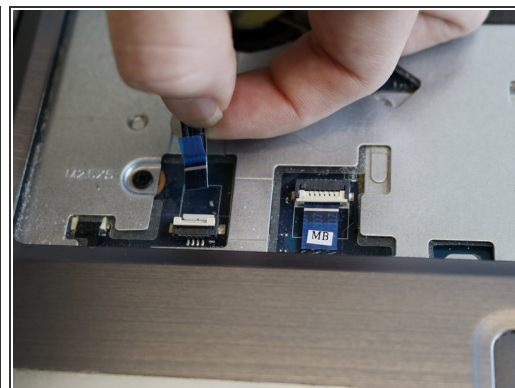
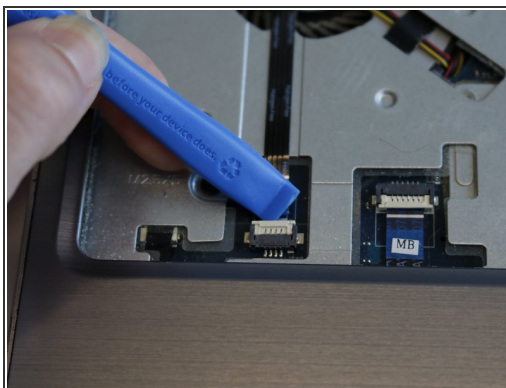
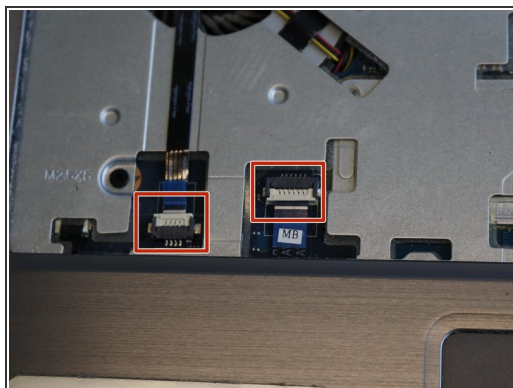
- Replace the screws that secure the hard-drive assembly to the computer base.

Step 19 — Palm Rest



- Remove thirteen 5mm Phillips #000 screws from the back cover of the laptop.

Step 20



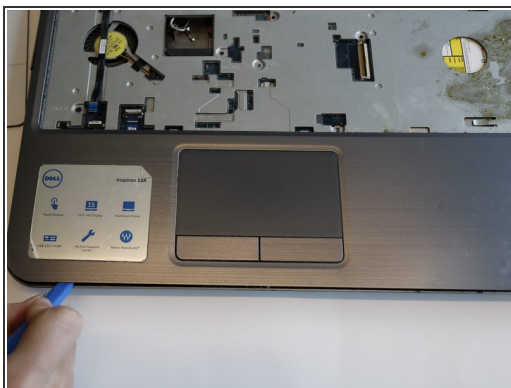
- Use the opening tool to unplug the palm rest cables and slide the cables out.

Step 21



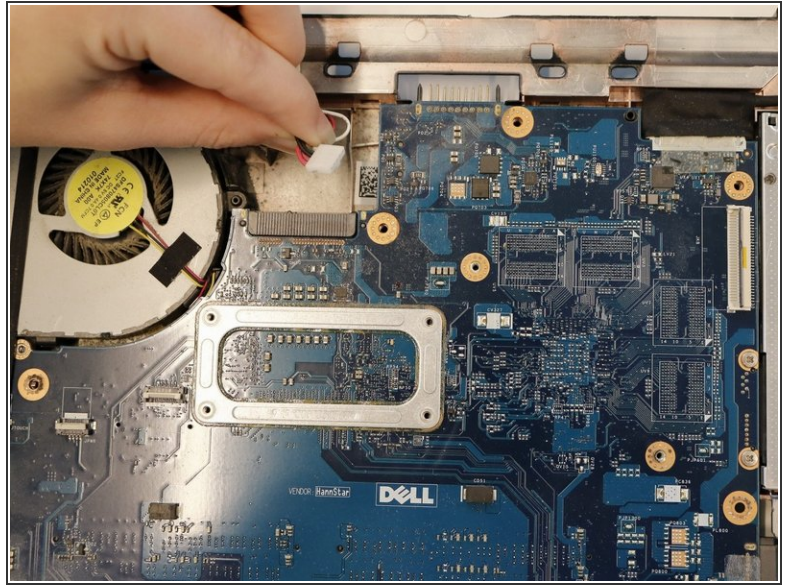
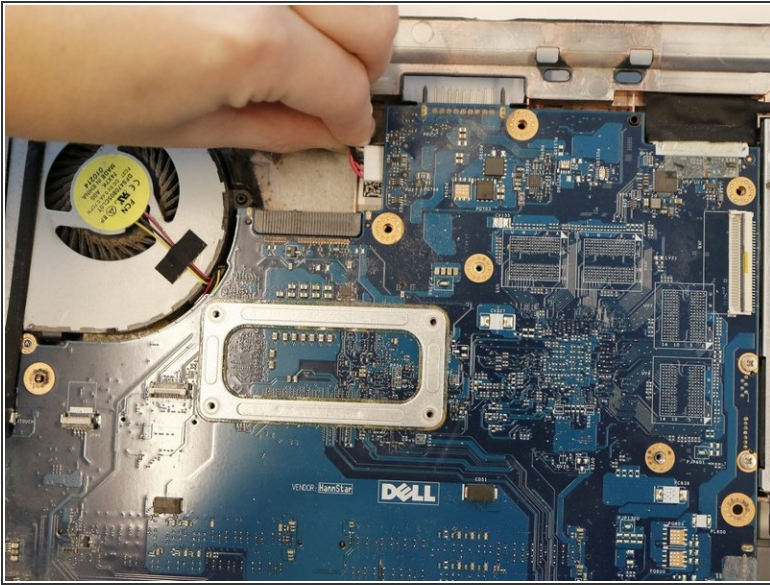
- Remove seven 5mm Phillips #000 screws from the midframe.

Step 22



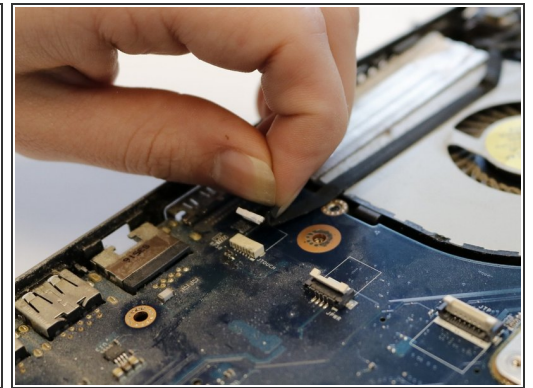
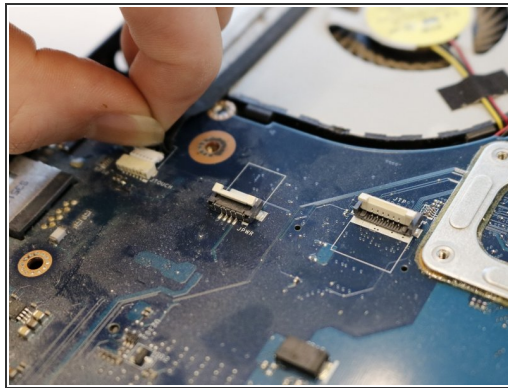
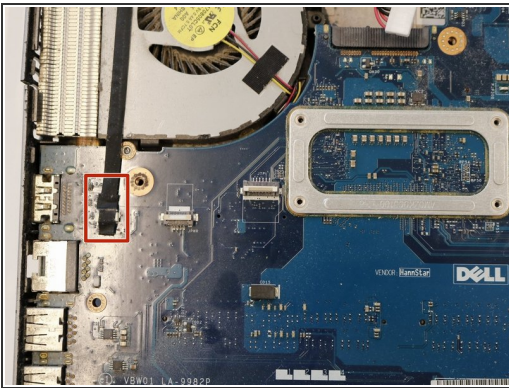
- Use the opening tool to lift the edges of the palm rest. Once all of the sides are lifted, pull the palm rest off.

Step 23 — Display Assembly



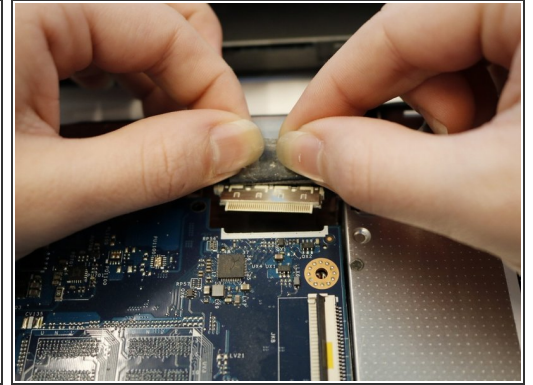
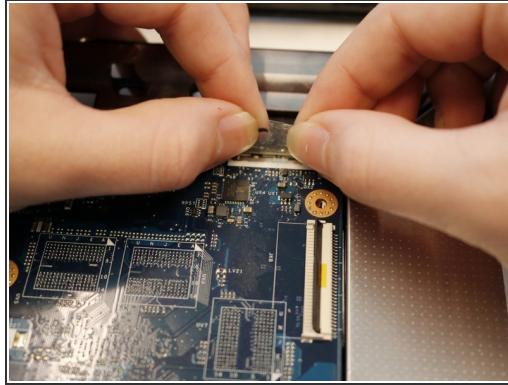
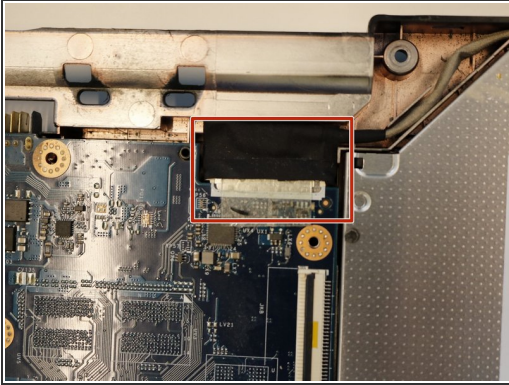
- Unplug the DC jack to the right of the fan.

Step 24



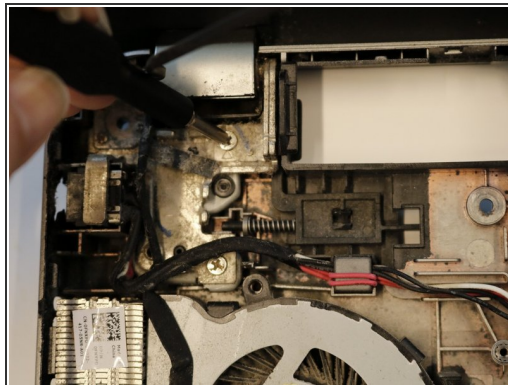
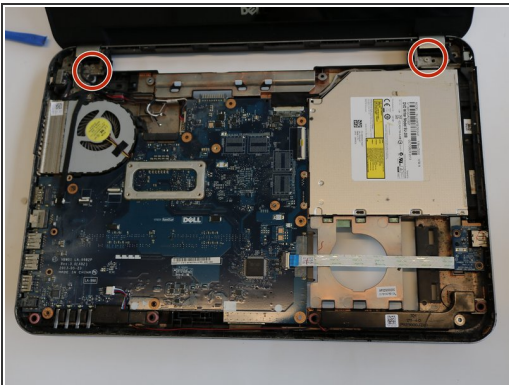
- Unplug the display cable below the fan by pulling the cable straight back.

Step 25



- Unplug the display cable located near the right display hinge by lifting the tape and pulling back.

Step 26



- Remove the two 5mm Phillips #000 screws from the left and right hinges.

Step 27



- Remove the display assembly by lifting the display from the hinges.

⚠ It is important to ensure the display cables are fully disconnected before removing the assembly.

To reassemble your device, follow these instructions in reverse order.