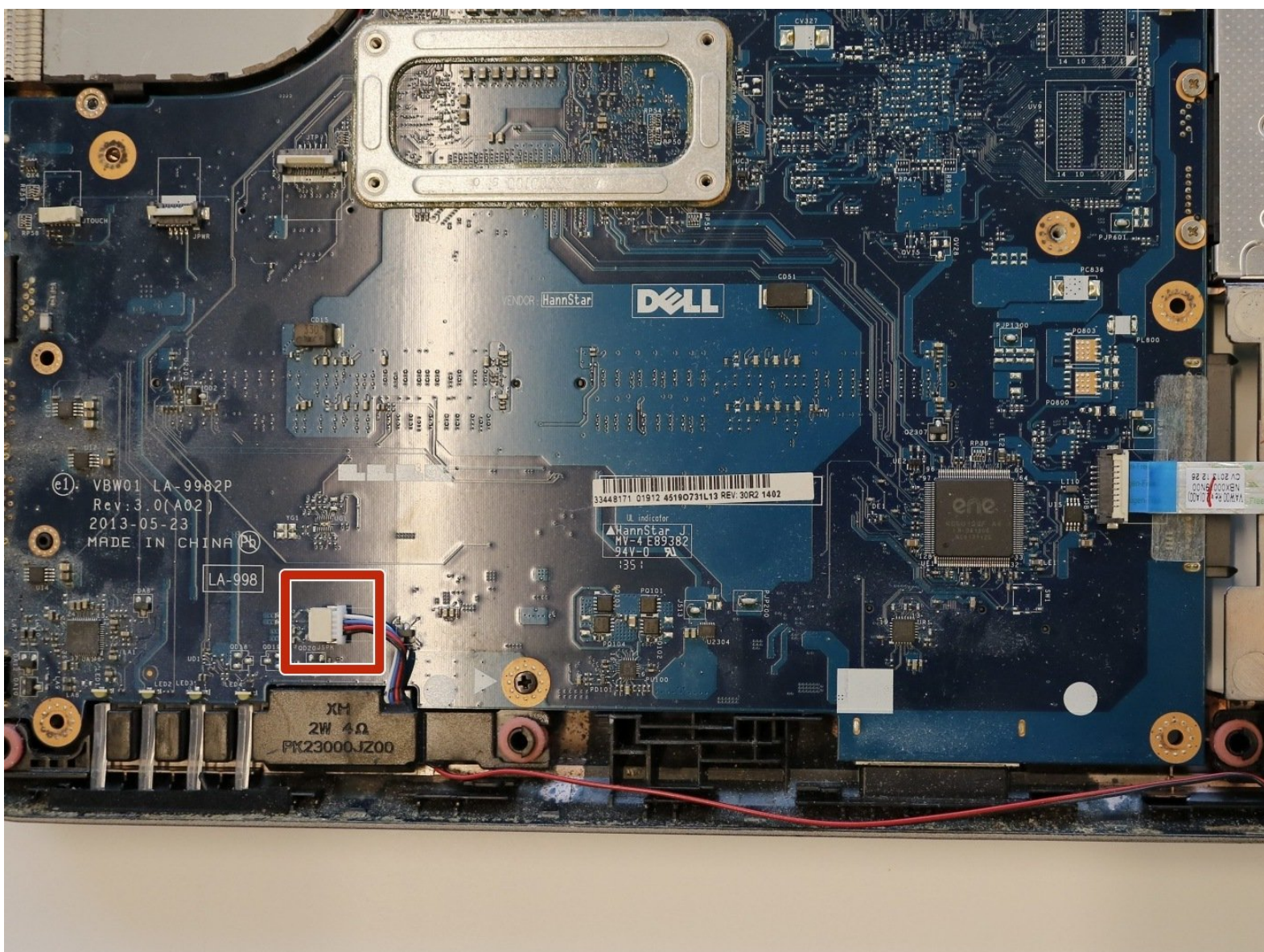




Dell Inspiron 15R 5537 Motherboard Replacement

How to replace a Dell Inspiron 15R 5537 motherboard.

Written By: Ashton Floda



INTRODUCTION

If your computer is not functioning properly or you would like to upgrade your computer for faster data transfer, better graphics, or a faster CPU, this guide will show you how to remove the motherboard on the Dell Inspiron 15R 5537.

The motherboard is the fundamental element of your laptop, sort of like the brains behind everything. It connects all of the components of your laptop together. A faulty motherboard can result in freezing of your computer, blue screen of death, or a burning odor.

It is important to be sure to run a windows diagnostics test on your computer to ensure that your motherboard is the part having issues. You can also do a visual check of your motherboard by checking for blown capacitors or bent pins, but this can only be done if you break down your computer to where the motherboard is properly exposed.

Before beginning this guide, make sure your laptop is powered off and disconnected from any external power source.




TOOLS:

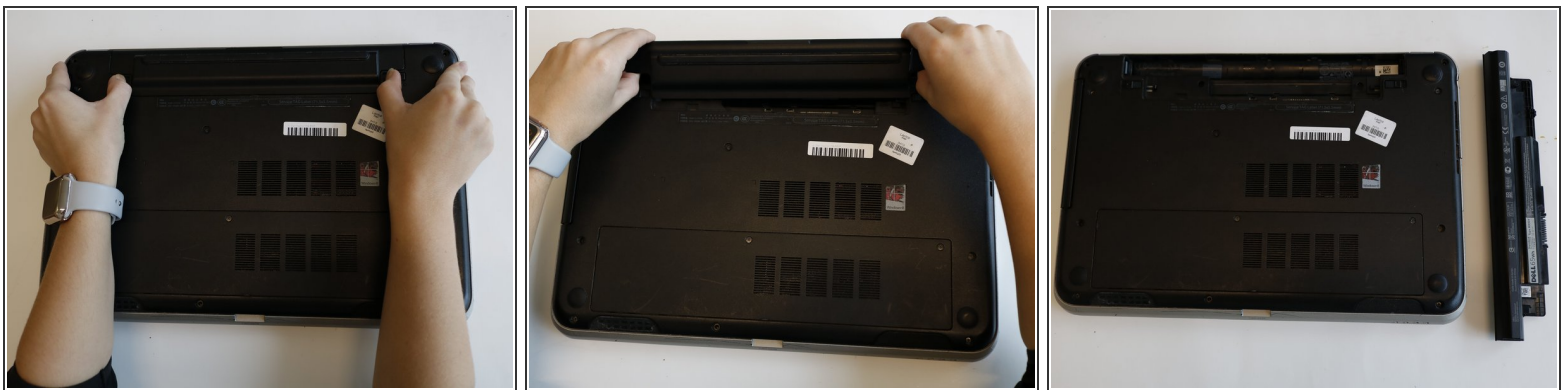
- [Phillips #000 Screwdriver](#) (1)
 - [iFixit Opening Tools](#) (1)
 - [Phillips #0 Screwdriver](#) (1)
-

Step 1 — Battery



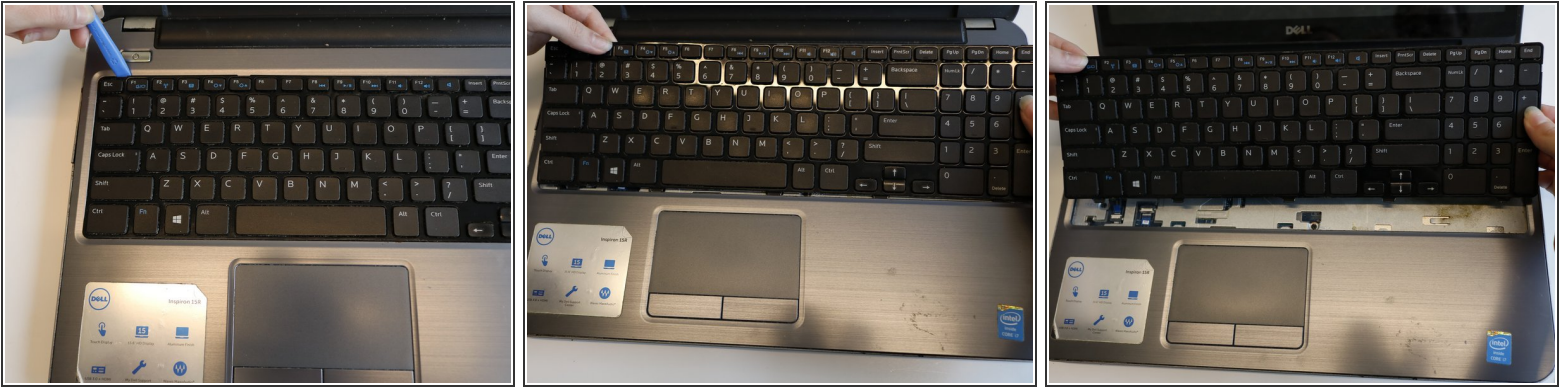
-  Before working inside your computer, read the safety information that shipped with your computer.
- Close the display and turn over the computer to see the battery locking tabs.

Step 2



- Pull both of the locking tabs outwards until they both click to release the battery.
- Pull the battery out by lifting it from the top and sliding it forward.

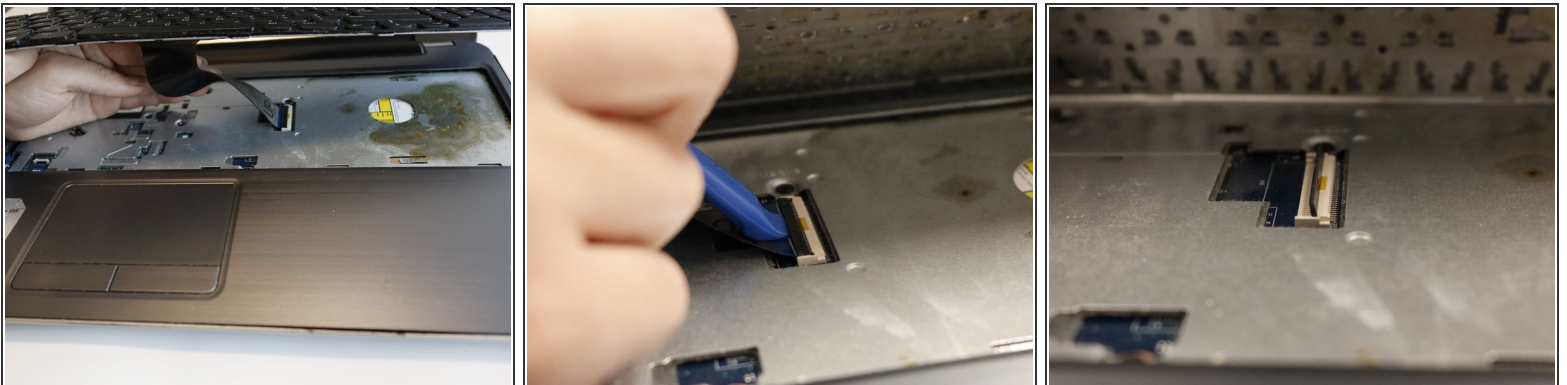
Step 3 — Keyboard



- Turn the laptop over so that the keyboard is facing up.
- Use an opening tool to pry the keyboard from the base of the laptop.
- Once the top of the keyboard is released, slide the keyboard upwards.

⚠ Be sure not to pull the keyboard straight up; this could damage the keyboard ribbon cable.

Step 4



- Use an opening tool to remove the keyboard ribbon from the latch by lifting the tab on top.
- Once lifted, disconnect the ribbon and replace with a new keyboard.

Step 5 — Wi-Fi Module



- Once the keyboard is removed, the Wi-Fi module will be accessible.

Step 6



- Use the opening tool to lift both antenna cables upward from the Wi-Fi module.

Step 7



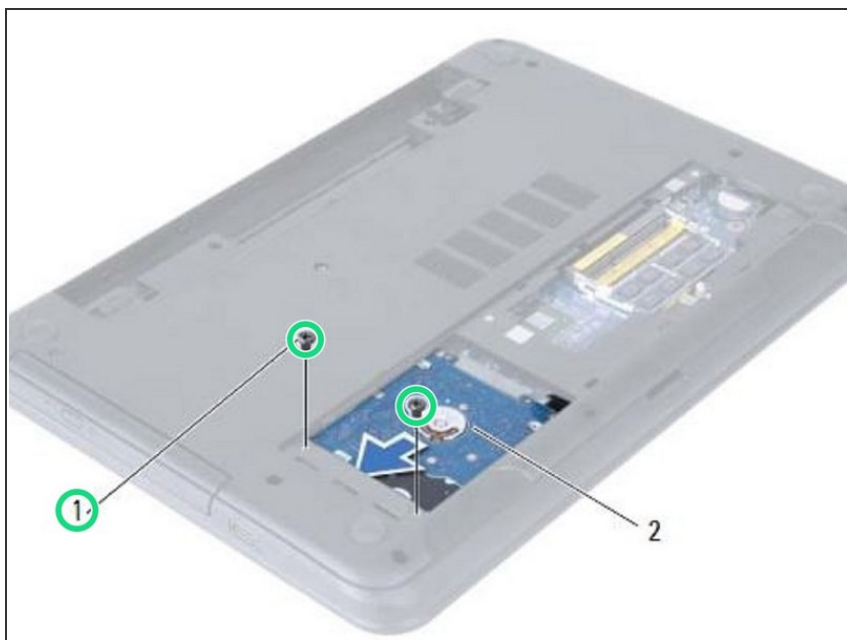
- Remove the 3mm Phillips #000 screw securing the Wi-Fi module.
- Lift the Wi-Fi module up and out of the laptop.

Step 8 — CAUTION



- ⚠ **WARNING:** Before working inside your computer, read the safety information that shipped with your computer and follow the steps in ["Before You Begin"](#). After working inside your computer, follow the instructions in ["After Working Inside Your Computer"](#).
- ⚠ **CAUTION:** To avoid data loss, do not remove the hard drive while the computer is in Sleep or On state.
- ⚠ **CAUTION:** Hard drives are extremely fragile. Exercise care when handling the hard drive.

Step 9 — Remove the Screws



- Remove the screws that secure the hard-drive assembly to the computer base.

Step 10 — Sliding the Hard Drive Assembly



- Slide the hard-drive assembly forward to disconnect the hard-drive assembly from the system board.

Step 11 — Lifting the Hard Drive Assembly



- Using the pull-tab, lift the hard-drive assembly out of the computer base.

Step 12 — Remove the Screws



- Remove the screws that secure the hard-drive bracket to the hard drive.

Step 13 — Lifting the Hard-Drive Bracket



- Lift the hard-drive bracket off the hard drive.

Step 14 — Align the Screw Holes



- Align the screw holes on the hard-drive bracket with the screw holes on the **NEW** hard drive.

Step 15 — Replace the Screws



- Replace the screws that secure the hard-drive bracket to the hard drive.

Step 16 — Placing the Hard Drive Assembly



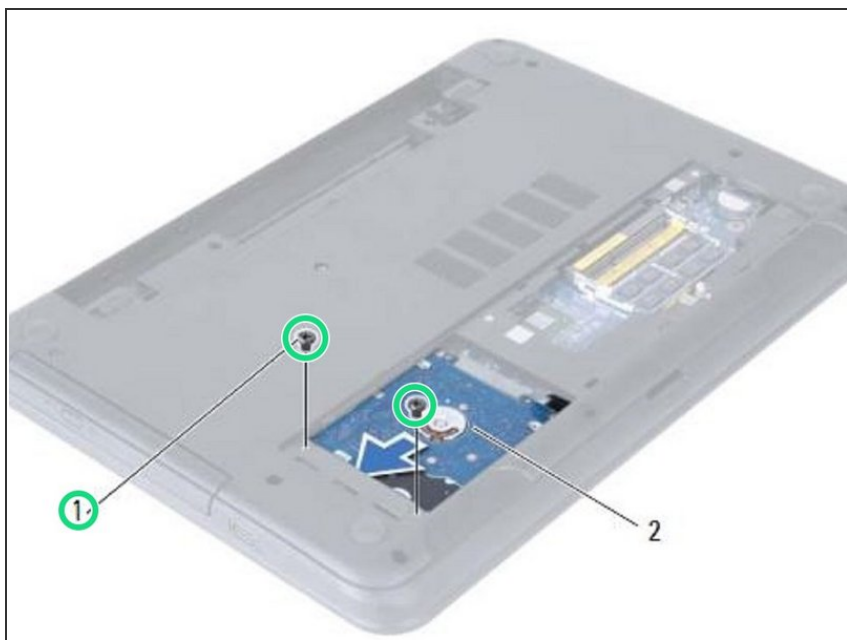
- Slide and place the hard-drive assembly in the hard-drive bay.

Step 17 — Sliding the Hard-Drive Assembly



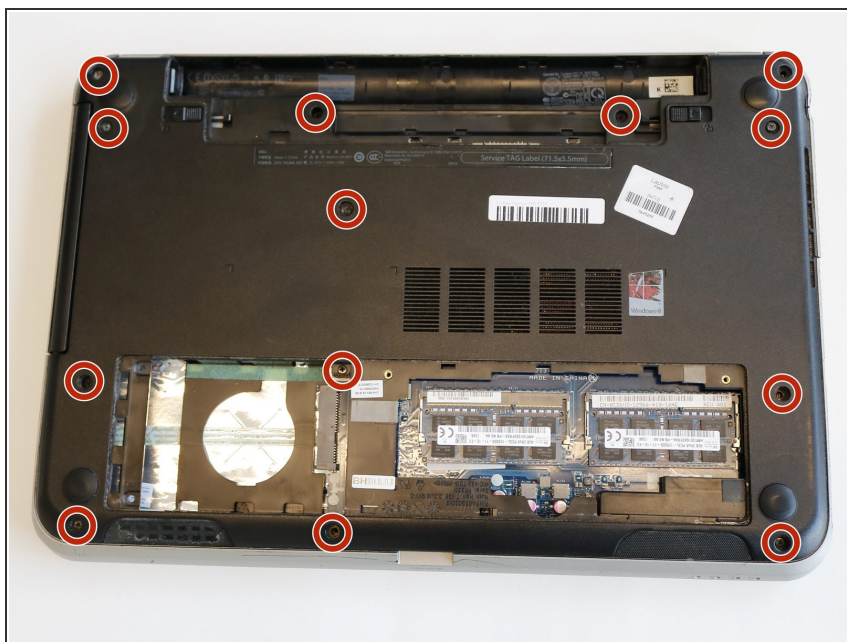
- Slide the hard-drive assembly backward to connect the hard-drive assembly to the system board.

Step 18 — Replace the Screws



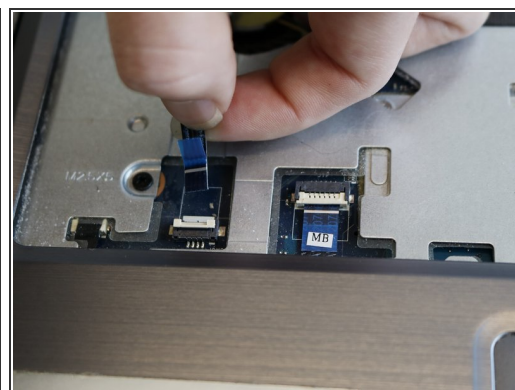
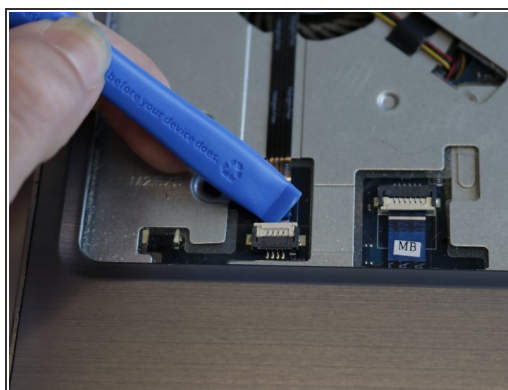
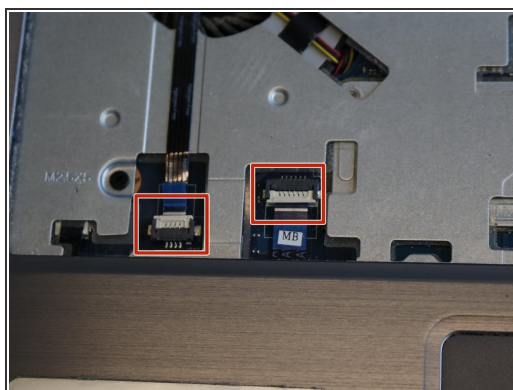
- Replace the screws that secure the hard-drive assembly to the computer base.

Step 19 — Palm Rest



- Remove thirteen 5mm Phillips #000 screws from the back cover of the laptop.

Step 20



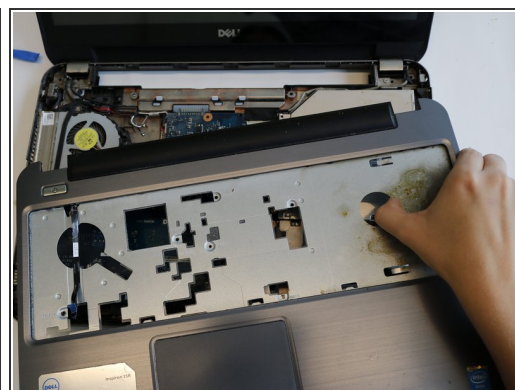
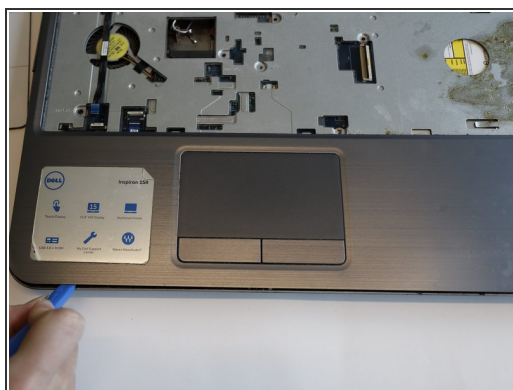
- Use the opening tool to unplug the palm rest cables and slide the cables out.

Step 21



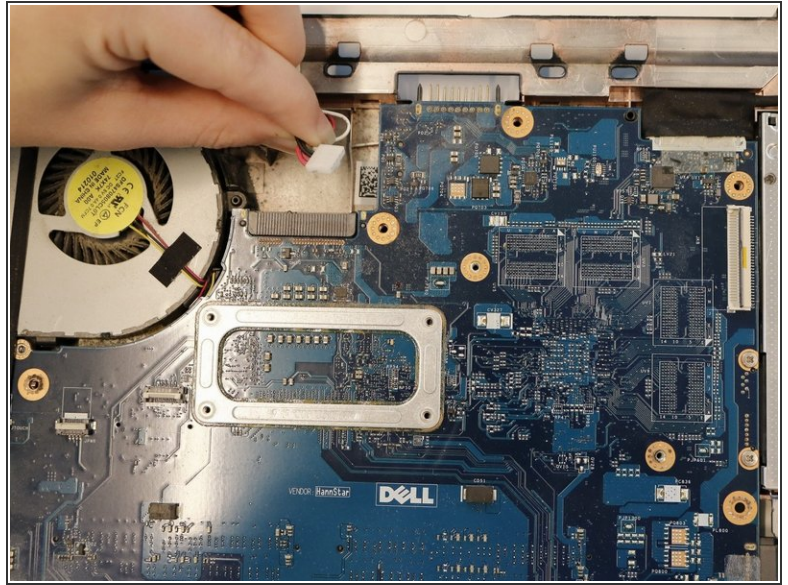
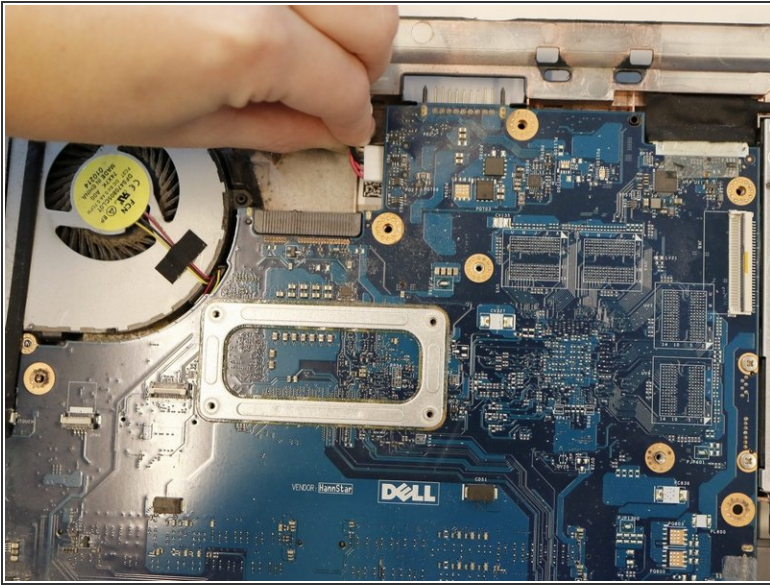
- Remove seven 5mm Phillips #000 screws from the midframe.

Step 22



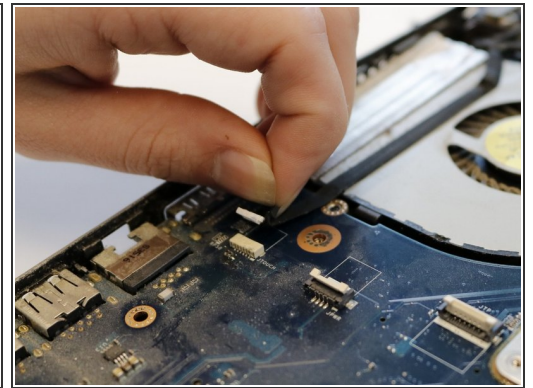
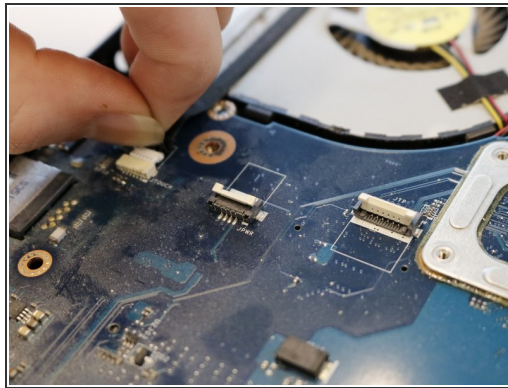
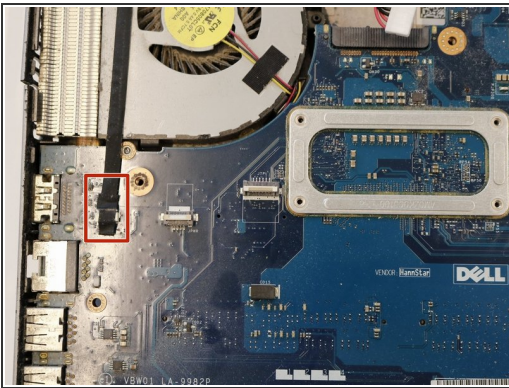
- Use the opening tool to lift the edges of the palm rest. Once all of the sides are lifted, pull the palm rest off.

Step 23 — Display Assembly



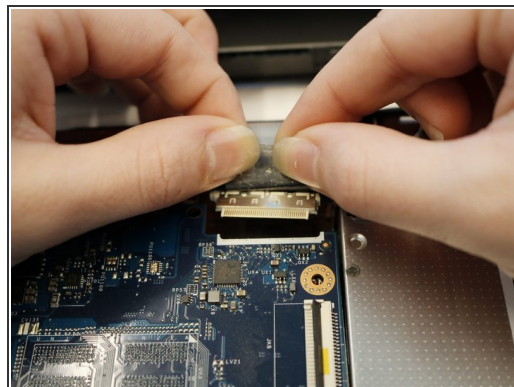
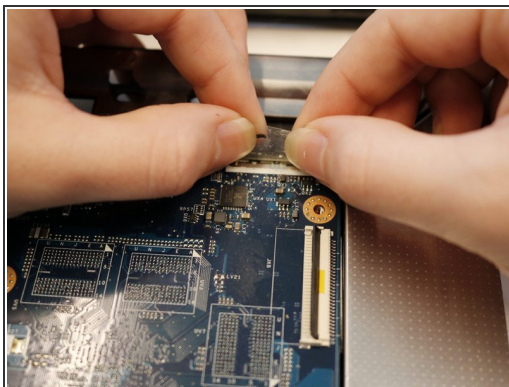
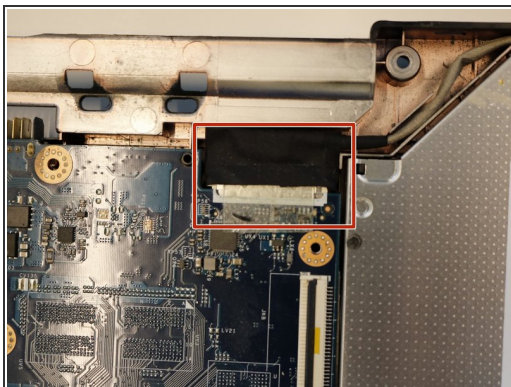
- Unplug the DC jack to the right of the fan.

Step 24



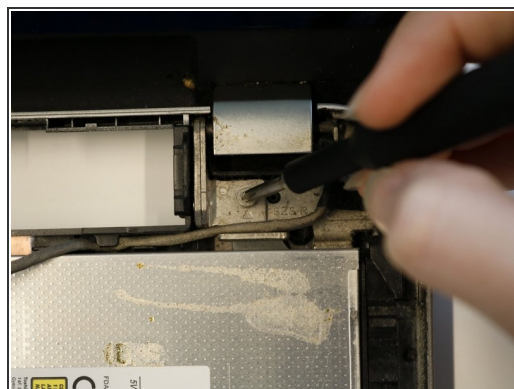
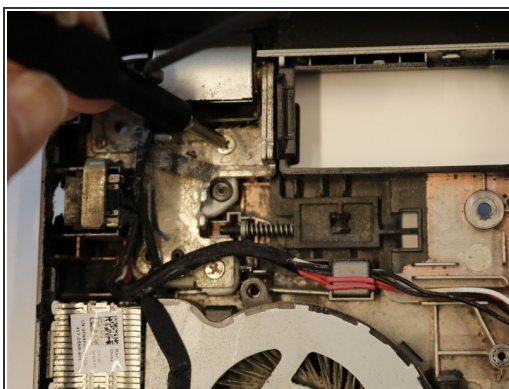
- Unplug the display cable below the fan by pulling the cable straight back.

Step 25



- Unplug the display cable located near the right display hinge by lifting the tape and pulling back.

Step 26



- Remove the two 5mm Phillips #000 screws from the left and right hinges.

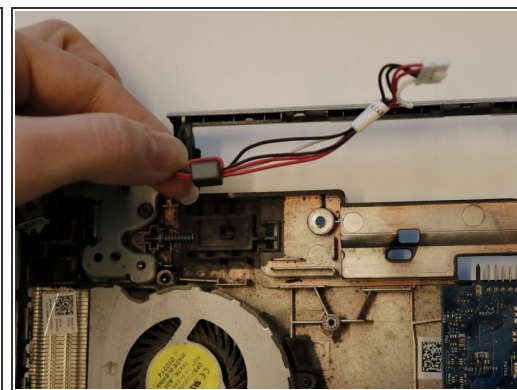
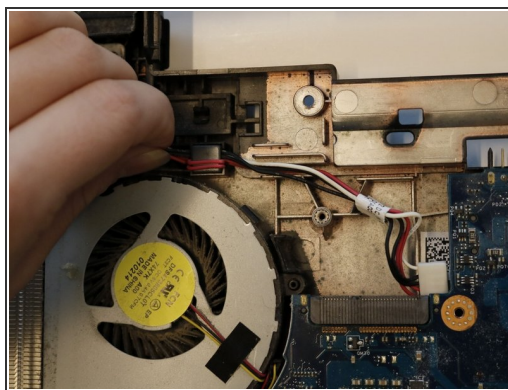
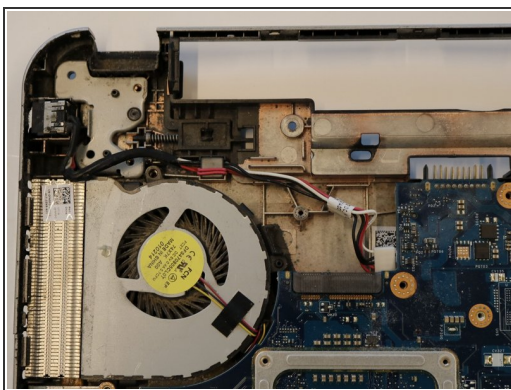
Step 27



- Remove the display assembly by lifting the display from the hinges.

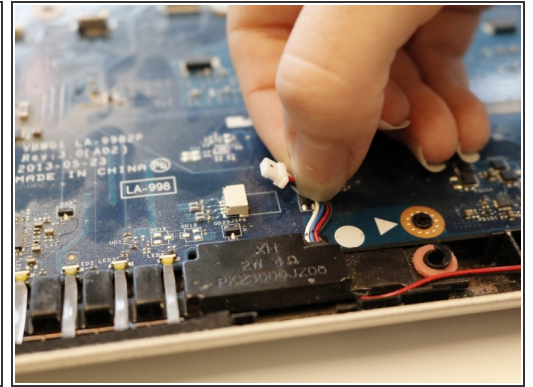
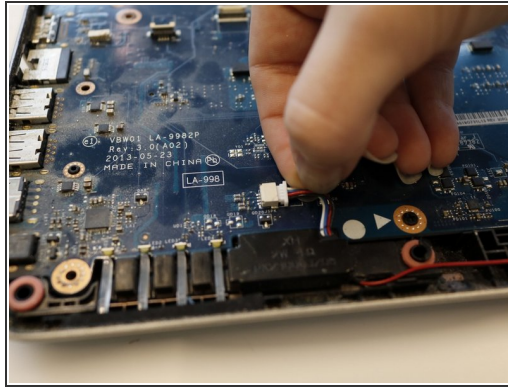
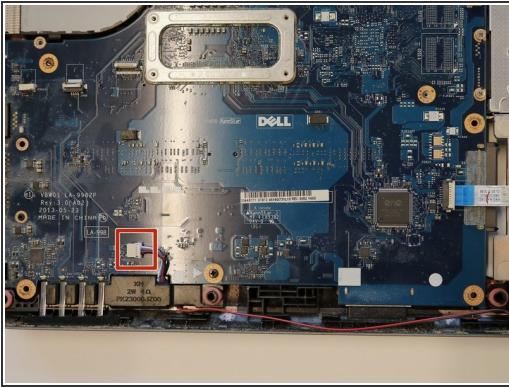
⚠ It is important to ensure the display cables are fully disconnected before removing the assembly.

Step 28 — DC Jack



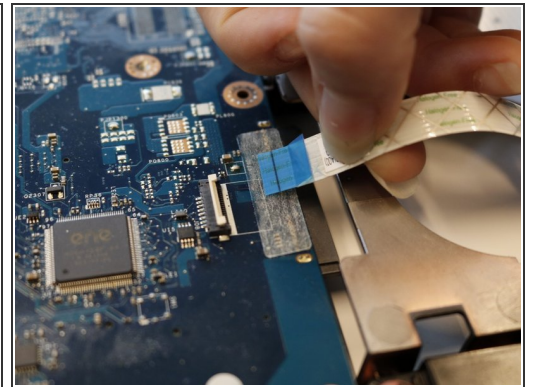
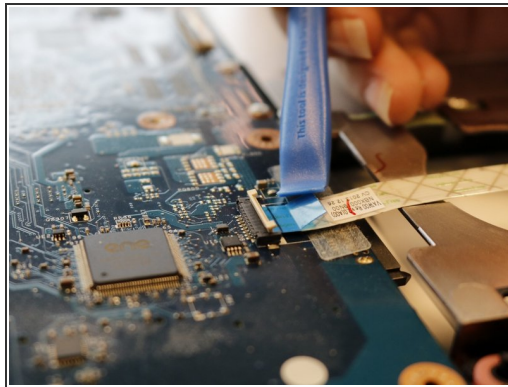
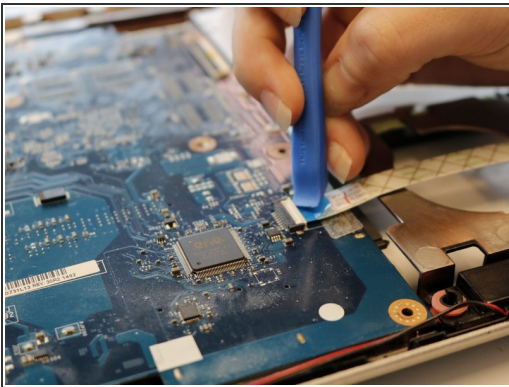
- Remove the DC jack once the display is removed by pulling the cable assembly upwards.

Step 29 — Motherboard



- Unplug the speaker cable.

Step 30



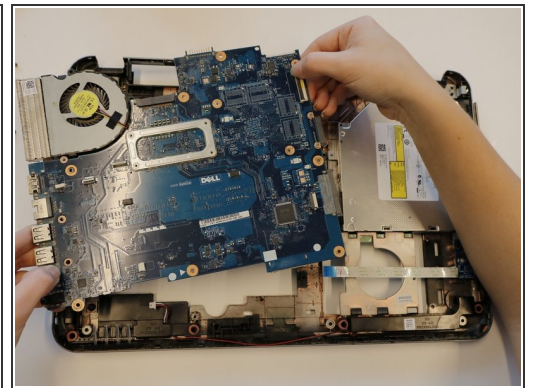
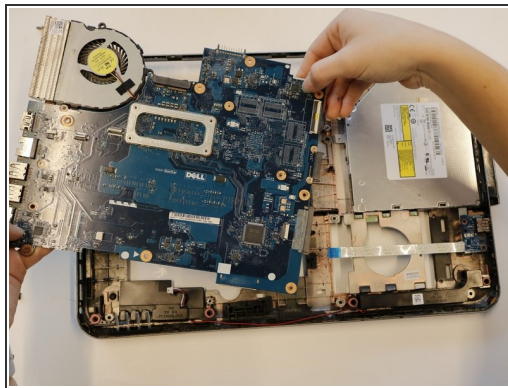
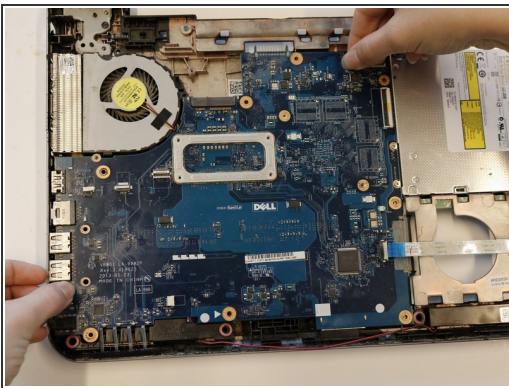
- Remove the cable running over the hard drive by using the opening tool to lift the tab and pull back.

Step 31



- Remove the single 5mm Phillips #000 screw.

Step 32



- Remove the motherboard by lifting straight up. Ensure the CD drive is disconnected from the motherboard.

To reassemble your device, follow these instructions in reverse order.