



Dell Inspiron 15R 5537 Wi-Fi Module Replacement

In this guide, you will see how to replace the Wi-Fi module on the Dell Inspiron 15R 5537.

Written By: Ashton Floda



INTRODUCTION

If the Wi-Fi connection to your computer doesn't hold, you may be experiencing a malfunction of your Wi-Fi module. This guide will show you how to remove the Wi-Fi module for the Dell Inspiron 15R 5537.

The Wi-Fi module is located underneath the keyboard and is connected by two antenna cables. A malfunctioning Wi-Fi module can result in connection issues to the wireless network. This issue doesn't completely disable your laptop, however, it does cause an inconvenience. A quick fix can be to use ethernet to connect to Wi-Fi or purchase an external Wi-Fi adapter.

It is important to make sure that the antenna cables are properly connected to your Wi-Fi module and that the wires aren't frayed.

Before beginning this guide, make sure your laptop is powered off and disconnected from any external power source.



TOOLS:

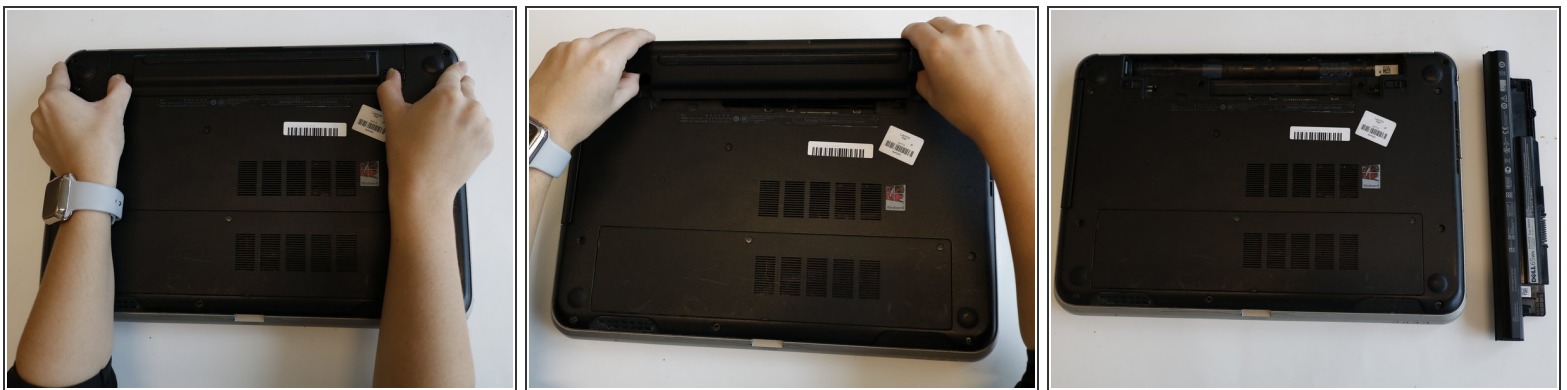
- [iFixit Opening Tools](#) (1)
 - [Phillips #000 Screwdriver](#) (1)
-

Step 1 — Battery



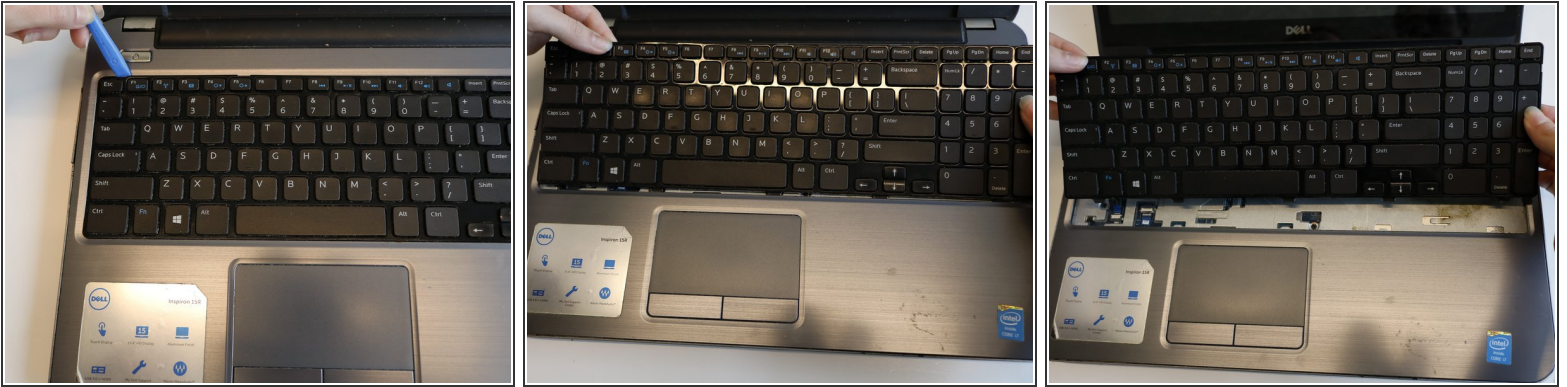
- ⚠ Before working inside your computer, read the safety information that shipped with your computer.
- Close the display and turn over the computer to see the battery locking tabs.

Step 2



- Pull both of the locking tabs outwards until they both click to release the battery.
- Pull the battery out by lifting it from the top and sliding it forward.

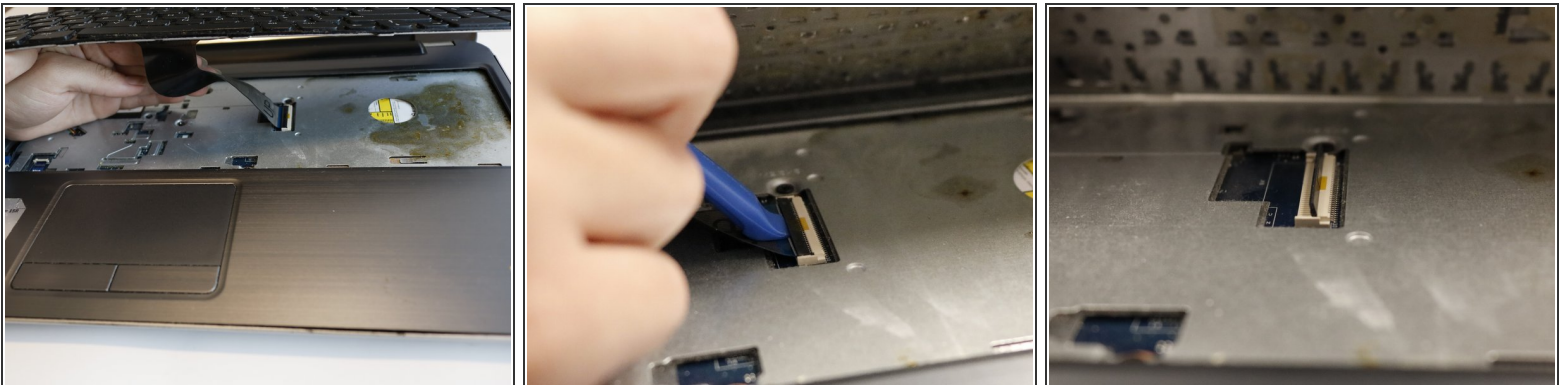
Step 3 — Keyboard



- Turn the laptop over so that the keyboard is facing up.
- Use an opening tool to pry the keyboard from the base of the laptop.
- Once the top of the keyboard is released, slide the keyboard upwards.

⚠ Be sure not to pull the keyboard straight up; this could damage the keyboard ribbon cable.

Step 4



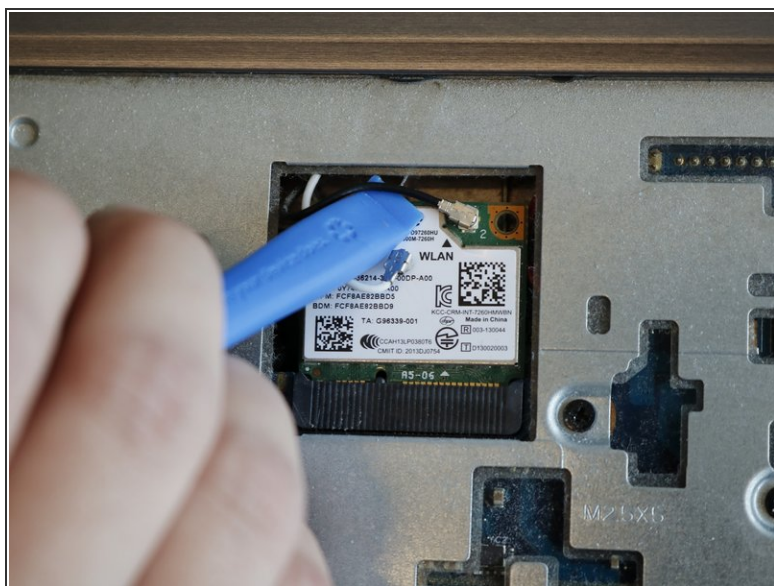
- Use an opening tool to remove the keyboard ribbon from the latch by lifting the tab on top.
- Once lifted, disconnect the ribbon and replace with a new keyboard.

Step 5 — Wi-Fi Module



- Once the keyboard is removed, the Wi-Fi module will be accessible.

Step 6



- Use the opening tool to lift both antenna cables upward from the Wi-Fi module.

Step 7



- Remove the 3mm Phillips #000 screw securing the Wi-Fi module.
- Lift the Wi-Fi module up and out of the laptop.

To reassemble your device, follow these instructions in reverse order.