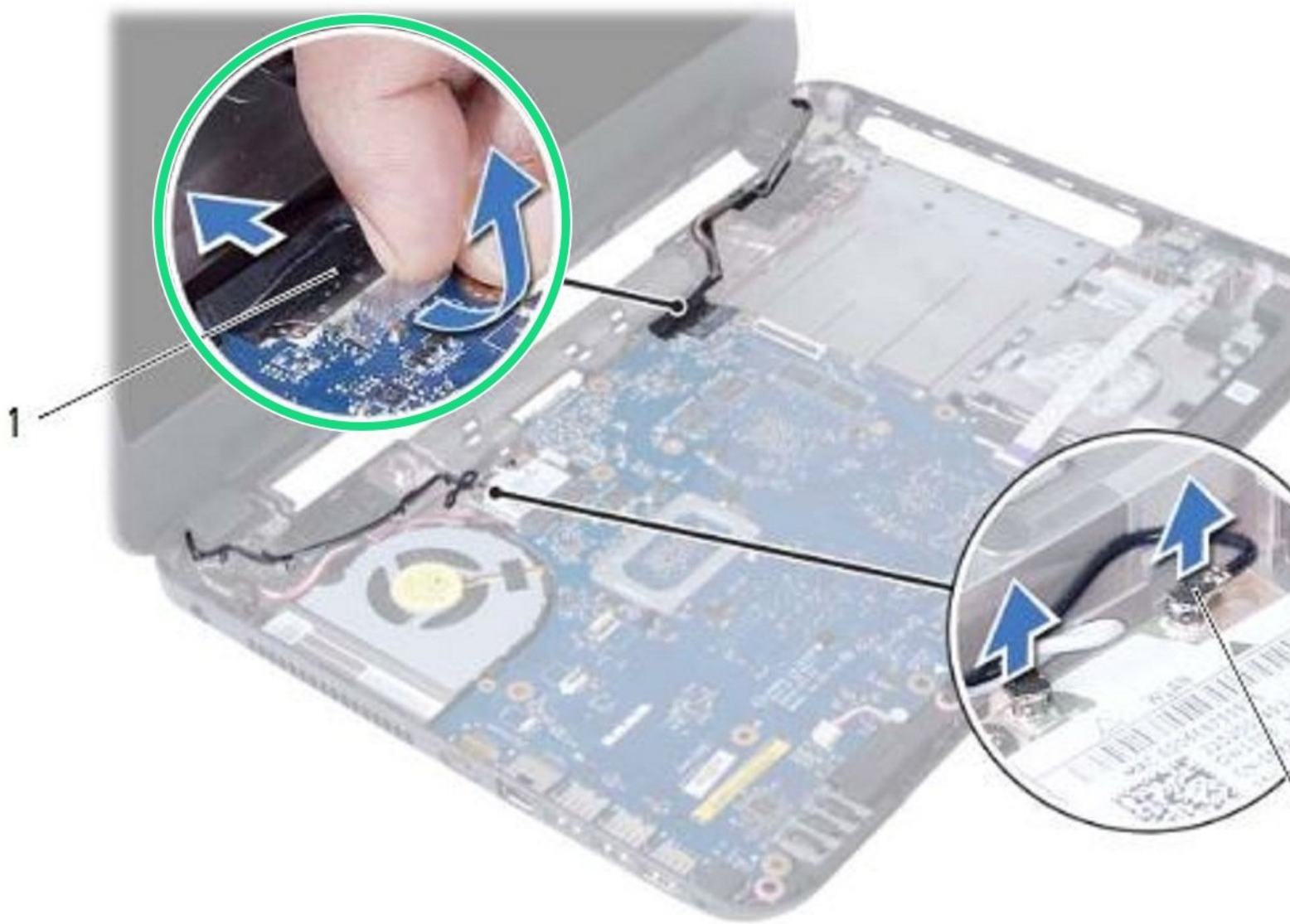




# Dell Inspiron 15R N5110 Display Assembly Replacement

Written By: Terrence15



---

## INTRODUCTION

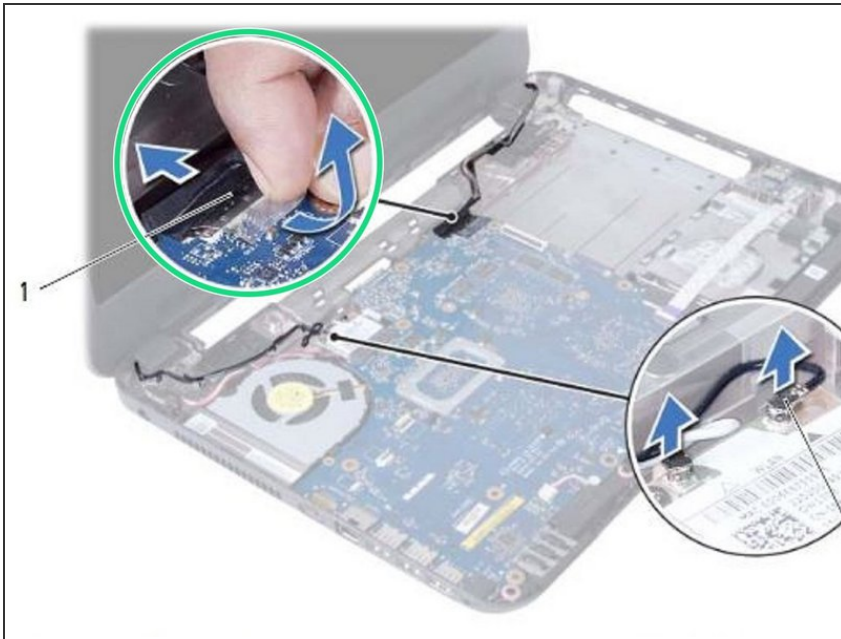
In this guide, we will be showing you how to remove and replace the Display Assembly.



### TOOLS:

- [Phillips #0 Screwdriver](#) (1)
-

## Step 1 — Peel the Tape



**⚠ WARNING:** Before working inside your computer, read the safety information that shipped with your computer and follow the steps in ["Before You Begin"](#). After working inside your computer, follow the instructions in ["After Working Inside Your Computer"](#).

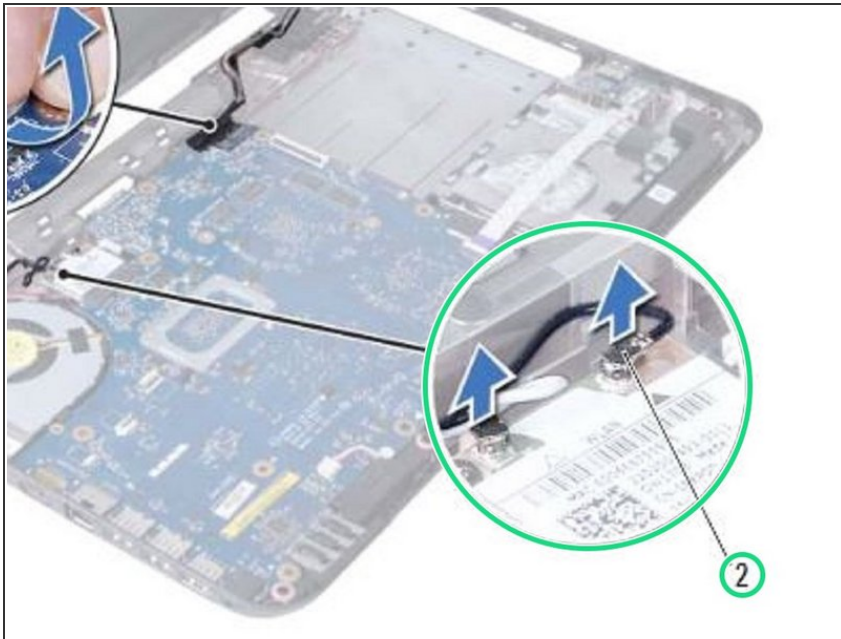
- Peel the tape that secures the display cable to the system board.

## Step 2 — Disconnect the Display Cable



- Disconnect the display cable from the connectors on the system board.

### Step 3 — Disconnect the Cables



- Disconnect the wireless mini-card cables from the connectors on the wireless mini-card.

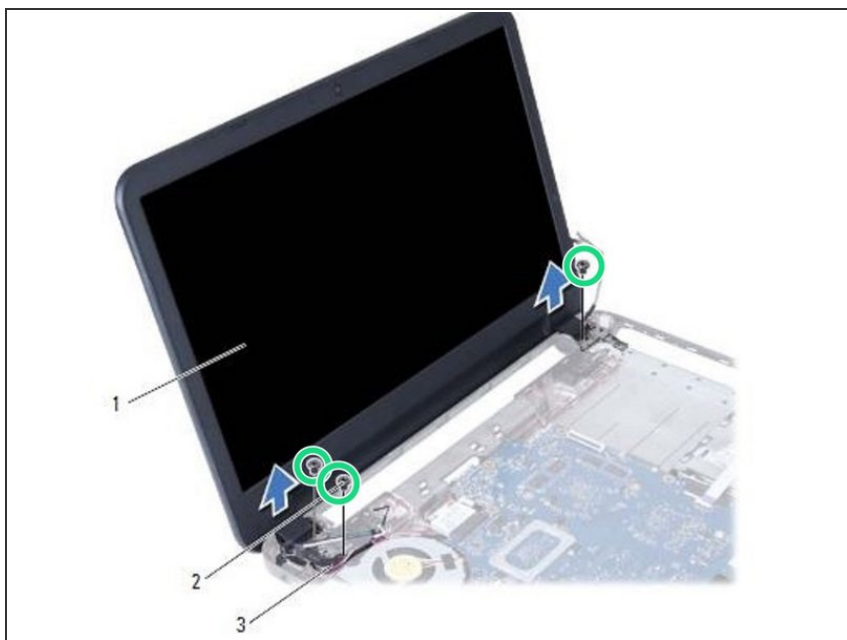
### Step 4 — Move the Power-Adapter Cable



- Move aside the power adapter-port cable from the screws.

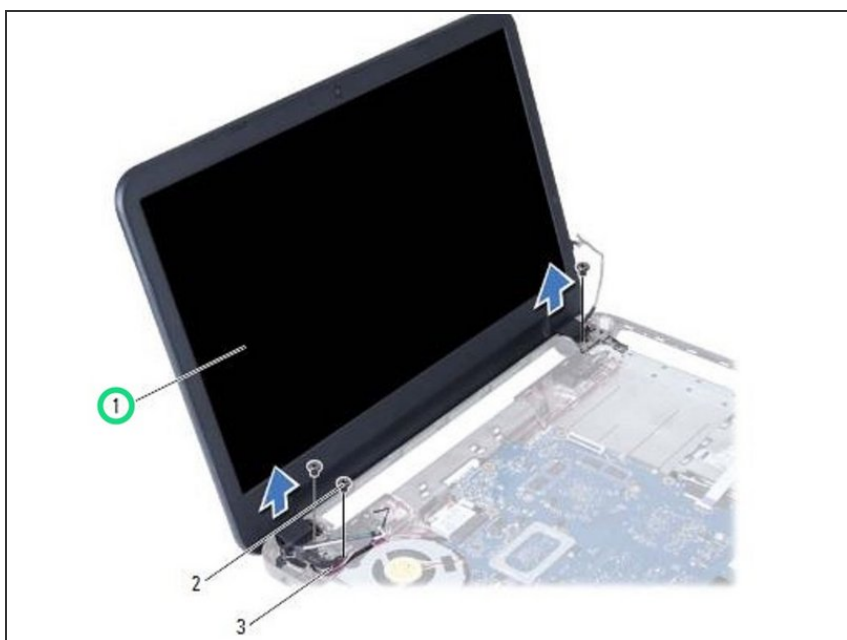


## Step 5 — Remove the Screws



- Remove the screws that secure the display assembly to the computer base.

## Step 6 — Lifting the Display Assembly



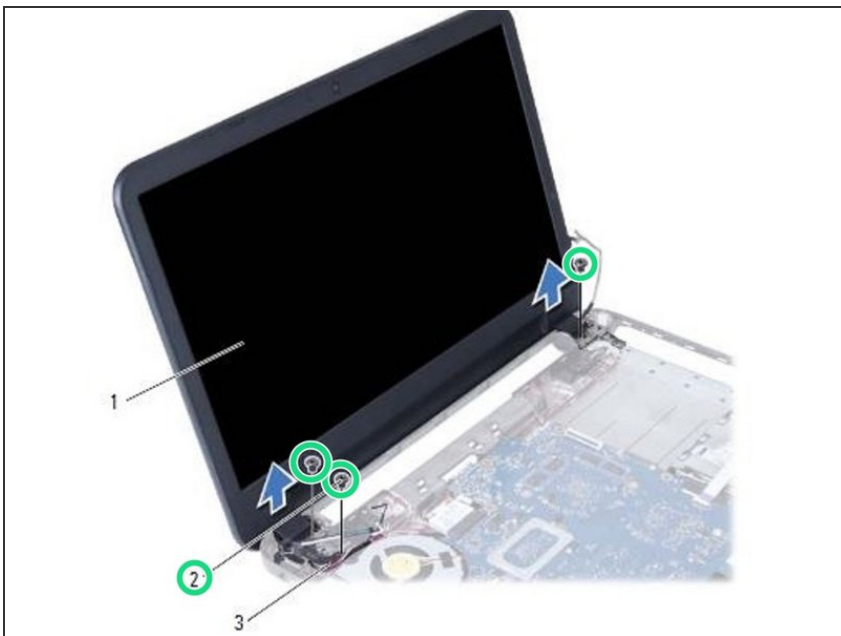
- Lift the display assembly off the computer base.

## Step 7 — Placing the Display Assembly



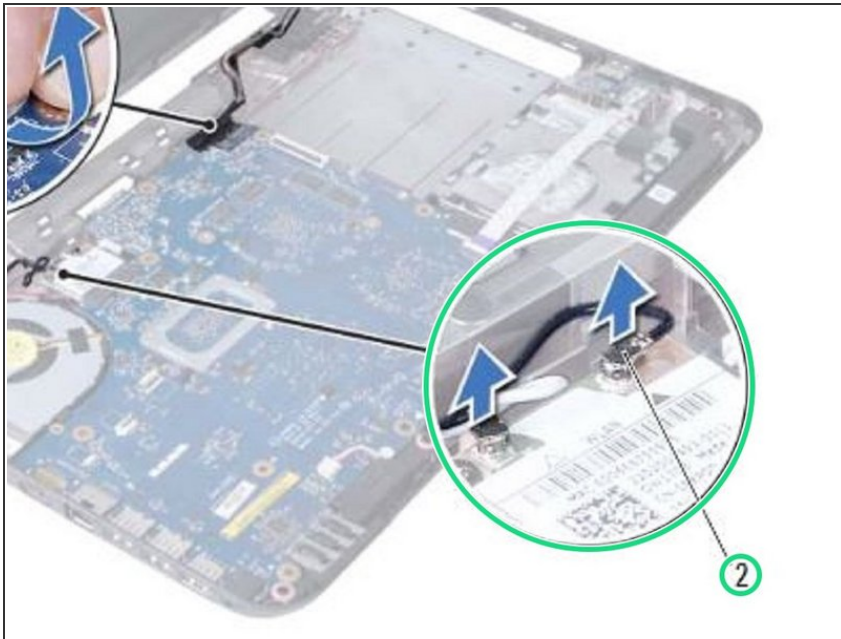
- Place the **NEW** display assembly on the computer base and align the screw holes on the display assembly with the screw holes on the computer base.

## Step 8 — Replace the Screws



- Replace the screws that secure the display assembly to the computer base.

## Step 9 — Connecting the Cables



- Connect the wireless mini-card cables to the connectors on the wireless mini-card.

## Step 10 — Connect the Display Cable



- Connect the display cable to the connector on the system board.

## Step 11 — Adhere the Tape



- Adhere the tape that secures the display cable to the system board.