



Dell Inspiron 15R N5110 Hard-Drive Assembly Replacement

Written By: Terrence15

INTRODUCTION




In this guide, we will be showing you how to remove and replace the Hard-Drive Assembly.

TOOLS:

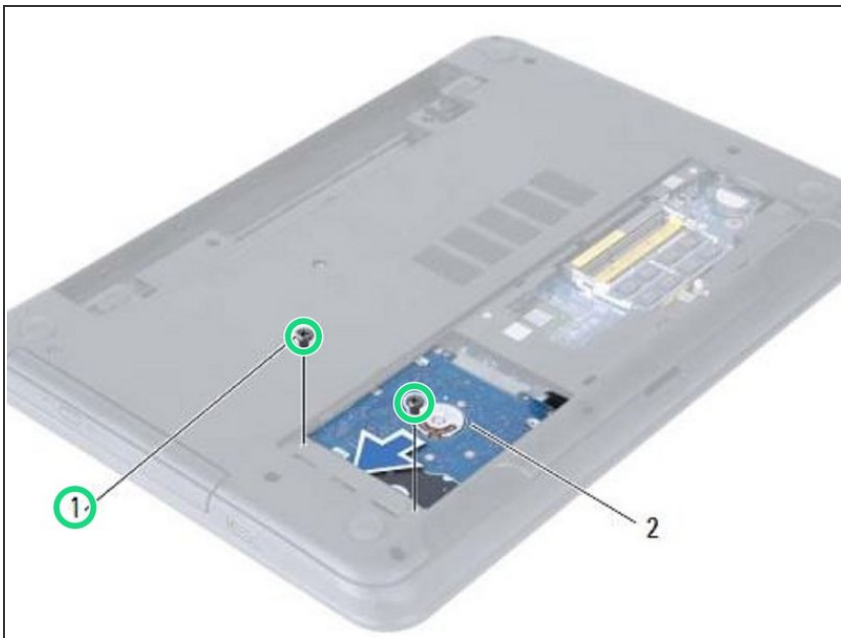
- [Phillips #0 Screwdriver](#) (1)
-

Step 1 — CAUTION



-  **WARNING:** Before working inside your computer, read the safety information that shipped with your computer and follow the steps in ["Before You Begin"](#). After working inside your computer, follow the instructions in ["After Working Inside Your Computer"](#).
-  **CAUTION:** To avoid data loss, do not remove the hard drive while the computer is in Sleep or On state.
-  **CAUTION:** Hard drives are extremely fragile. Exercise care when handling the hard drive.

Step 2 — Remove the Screws



- Remove the screws that secure the hard-drive assembly to the computer base.

Step 3 — Sliding the Hard Drive Assembly



- Slide the hard-drive assembly forward to disconnect the hard-drive assembly from the system board.

Step 4 — Lifting the Hard Drive Assembly



- Using the pull-tab, lift the hard-drive assembly out of the computer base.

Step 5 — Remove the Screws



- Remove the screws that secure the hard-drive bracket to the hard drive.

Step 6 — Lifting the Hard-Drive Bracket



- Lift the hard-drive bracket off the hard drive.

Step 7 — Align the Screw Holes



- Align the screw holes on the hard-drive bracket with the screw holes on the **NEW** hard drive.

Step 8 — Replace the Screws



- Replace the screws that secure the hard-drive bracket to the hard drive.

Step 9 — Placing the Hard Drive Assembly



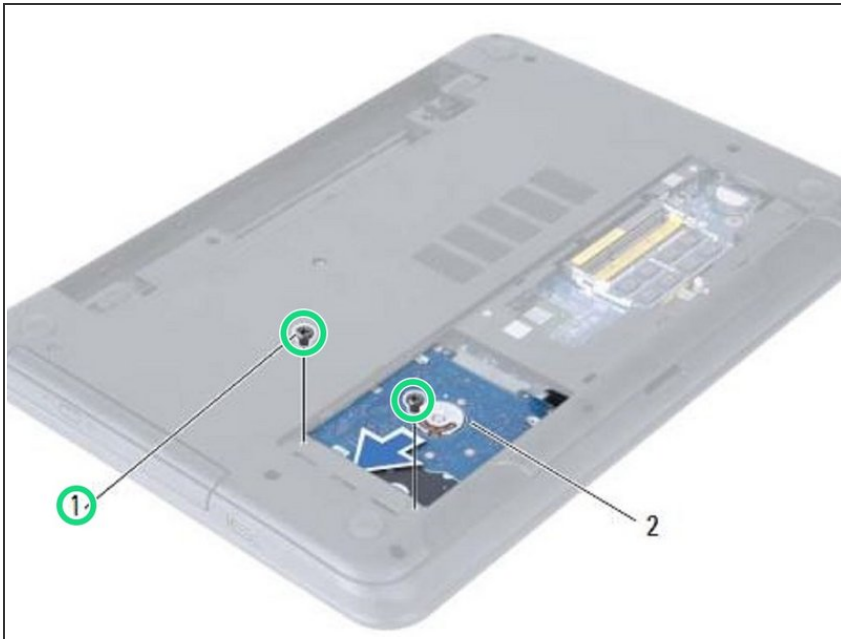
- Slide and place the hard-drive assembly in the hard-drive bay.

Step 10 — Sliding the Hard-Drive Assembly



- Slide the hard-drive assembly backward to connect the hard-drive assembly to the system board.

Step 11 — Replace the Screws



- Replace the screws that secure the hard-drive assembly to the computer base.