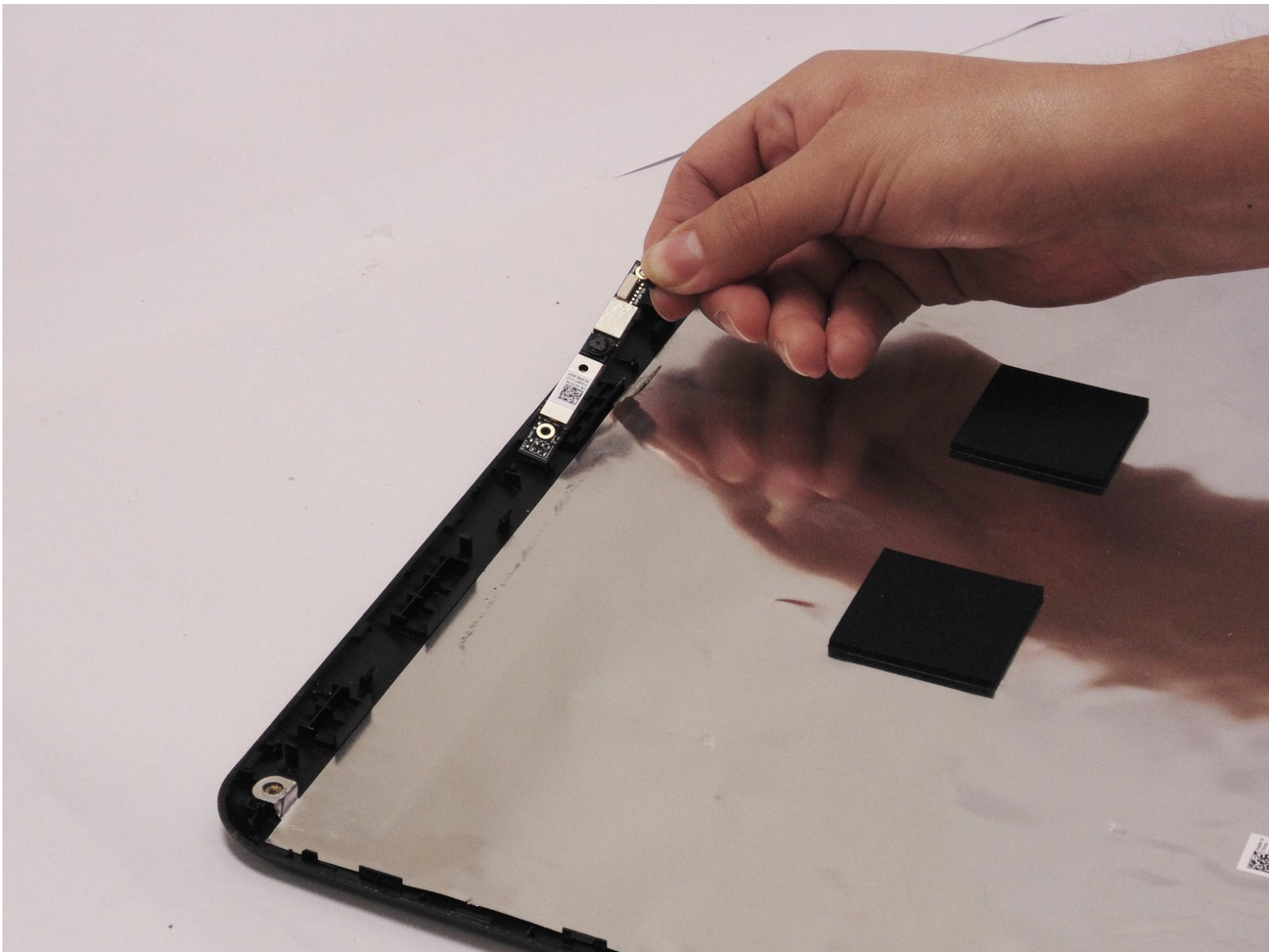




# Dell Inspiron 15R Webcam Replacement

If you have tried everything and your webcam still does not turn on, this guide will show you how to replace it.

Written By: Trixie Gonzalez



---

# INTRODUCTION

This guide will demonstrate how to remove an old webcam and replace it.



## TOOLS:

- [Phillips #0 Screwdriver](#) (1)
  - [Spudger](#) (1)
-

## Step 1 — Battery



- Turn the device over and locate the battery.

## Step 2



- Place thumbs on each latch and push outwards.

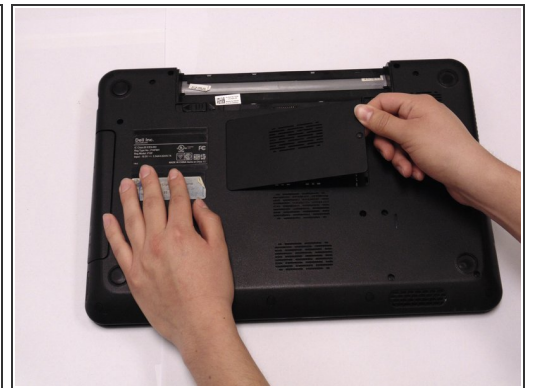


### Step 3



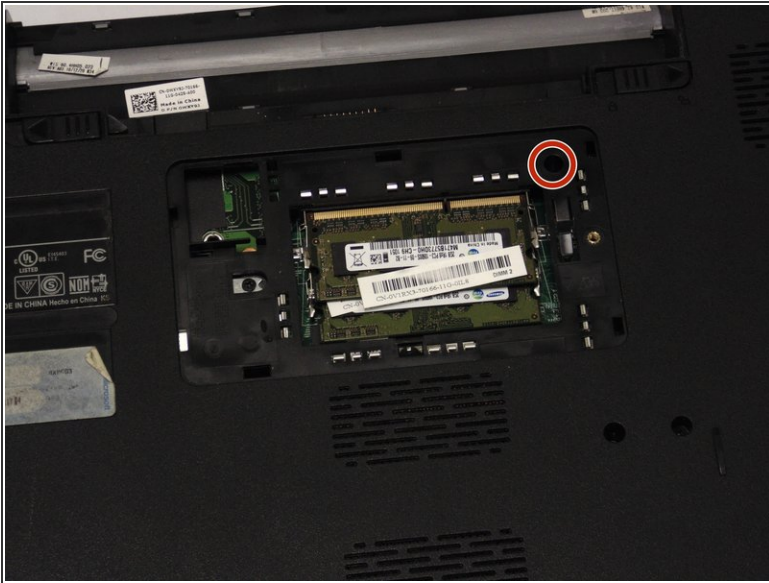
- Push and slide the battery away from you.

### Step 4 — Keyboard



- Locate the RAM compartment and the screw on the right hand side. Remove the cover.

## Step 5



- Locate and remove the 2.5 mm x 5 mm screw on the upper right hand side of the compartment.

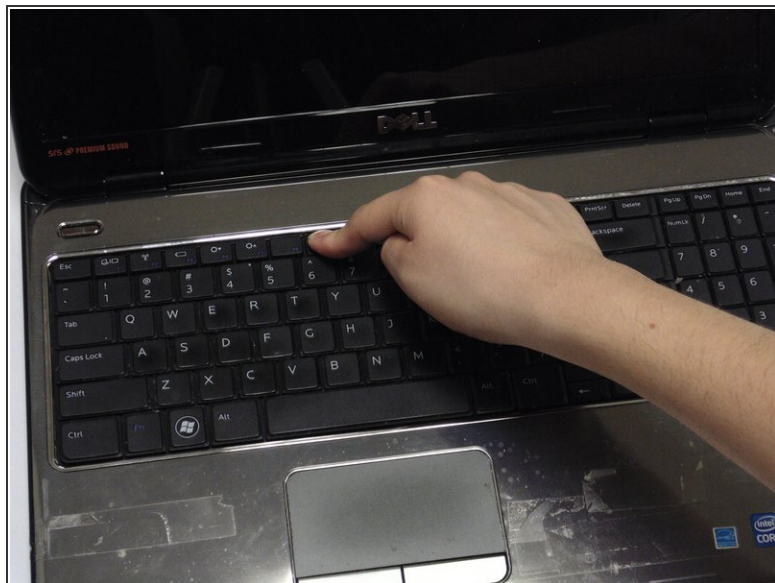
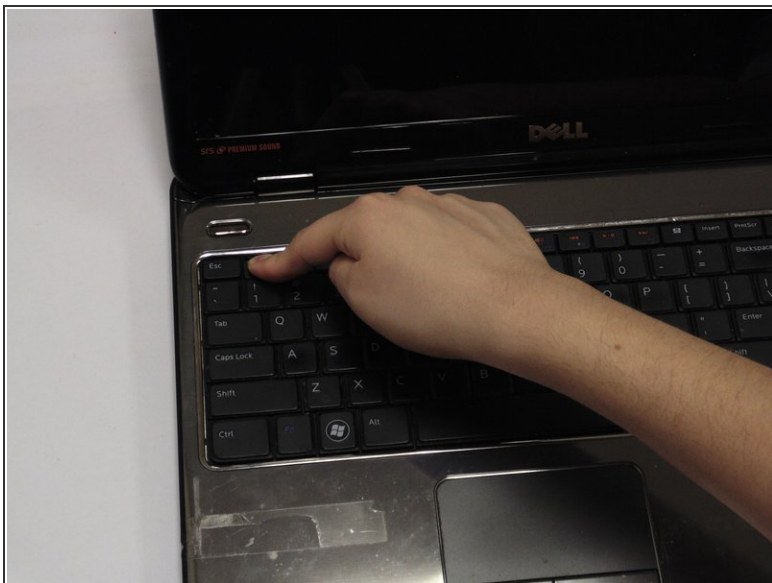
## Step 6



- Turn the device around and open it up.

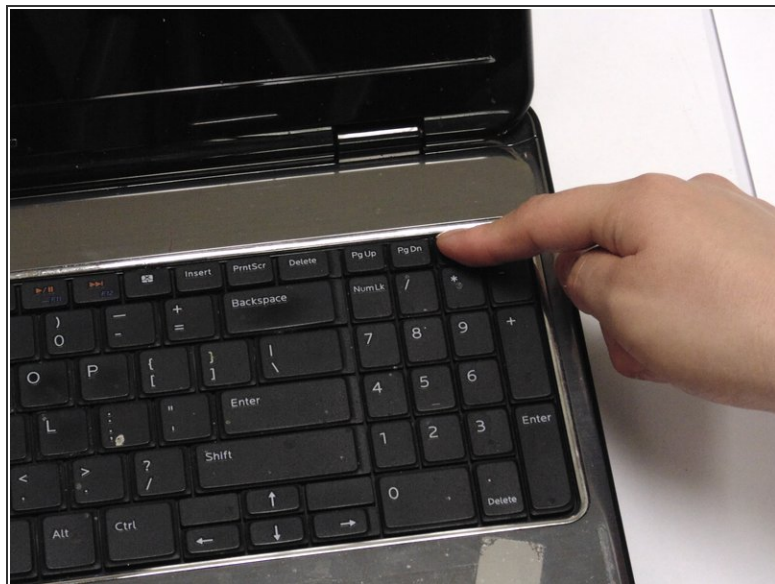
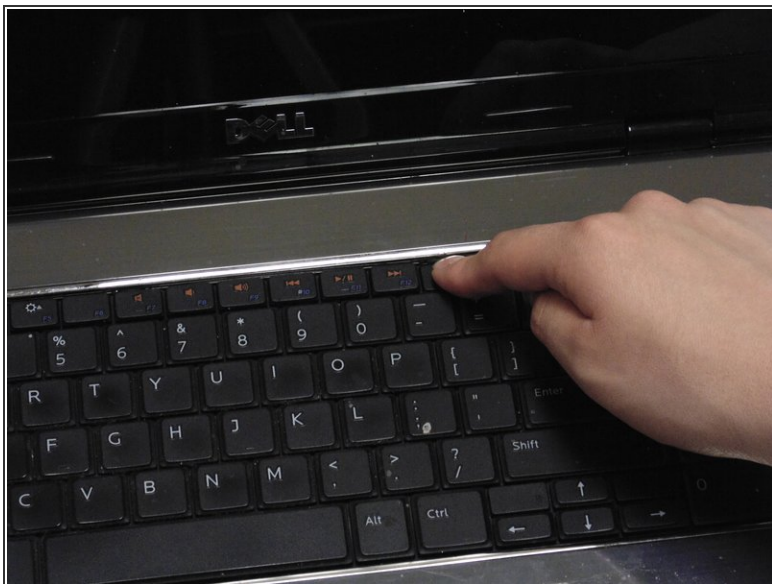


## Step 7



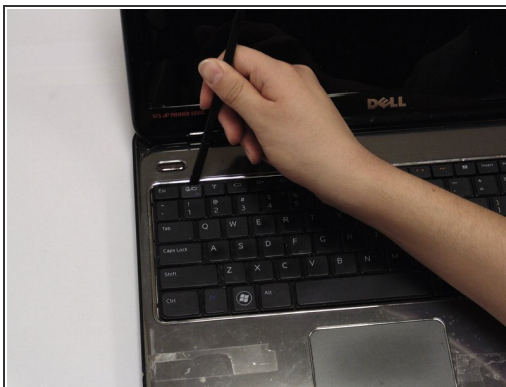
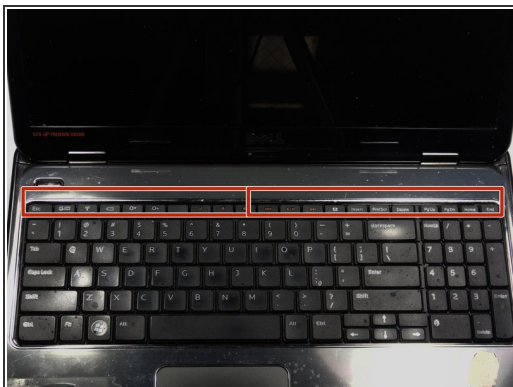
- Using your index finger, push down on the F1 and F7 keys.

## Step 8



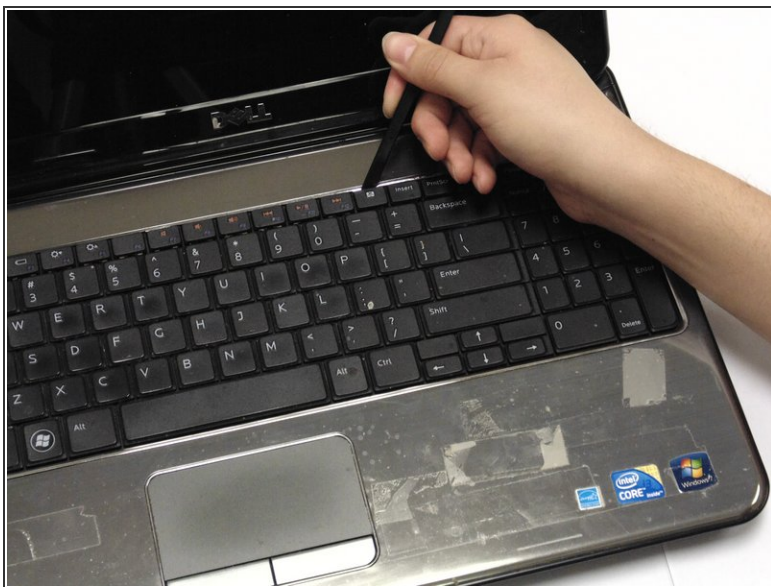
- Using your index finger, push down on the x icon and Home keys.

## Step 9



- Locate the keyboard lining (between the black and silver).
- Place your spudger between the keyboard lining behind the F1 and F7 keys and pull up.

## Step 10



- Place your spudger between the keyboard lining behind the x icon and Home keys and pull up.

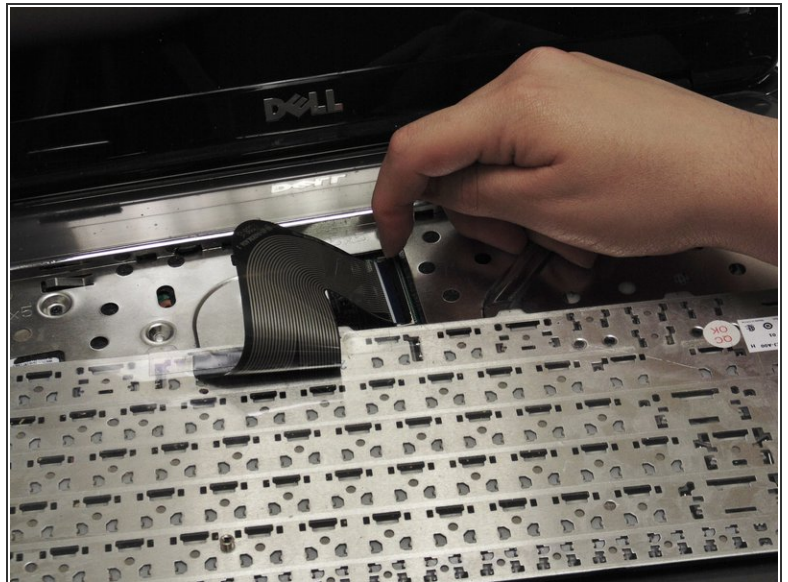
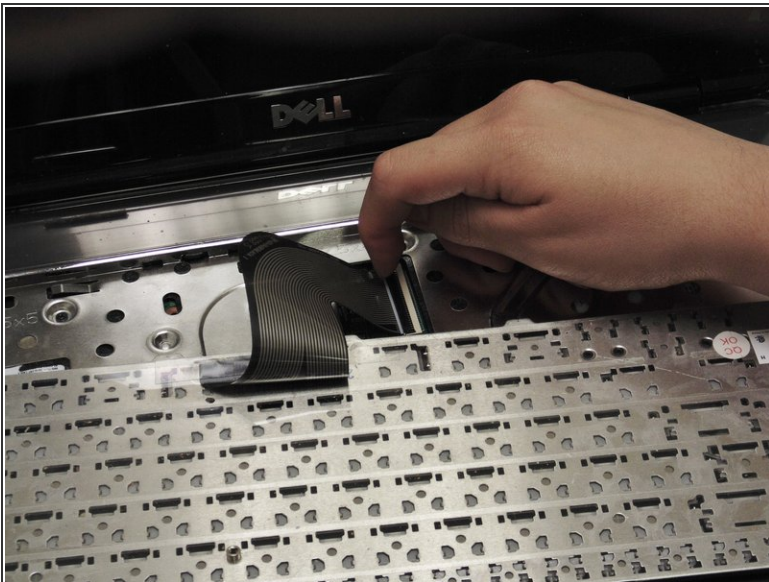


## Step 11



- Carefully pull and turn the keyboard over.

## Step 12



- Lift the black lever.

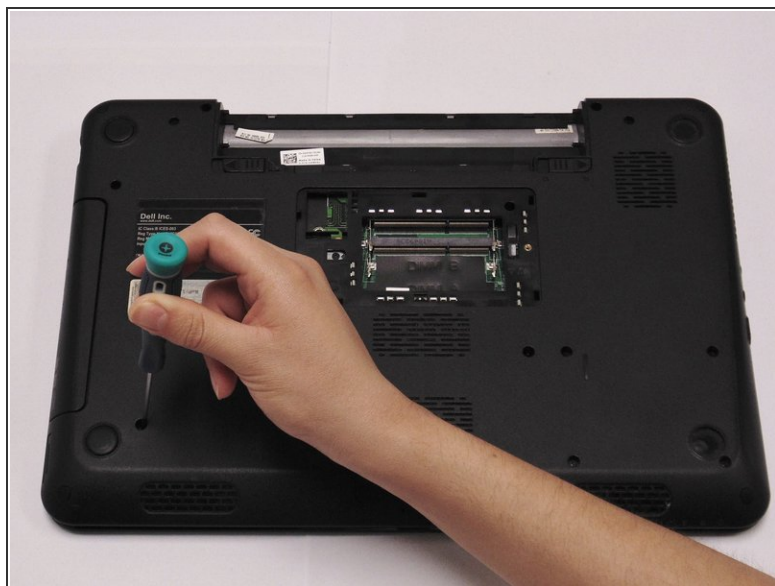


## Step 13



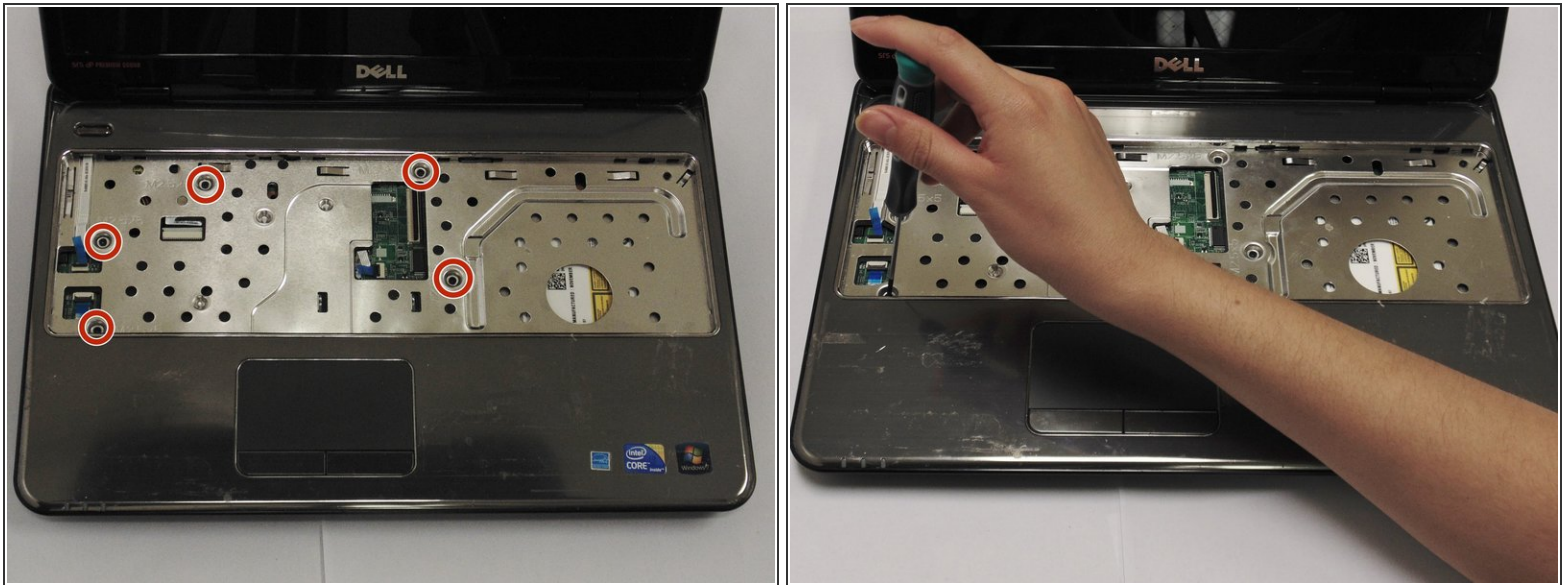
- Remove the keyboard cable

## Step 14 — Hard Drive



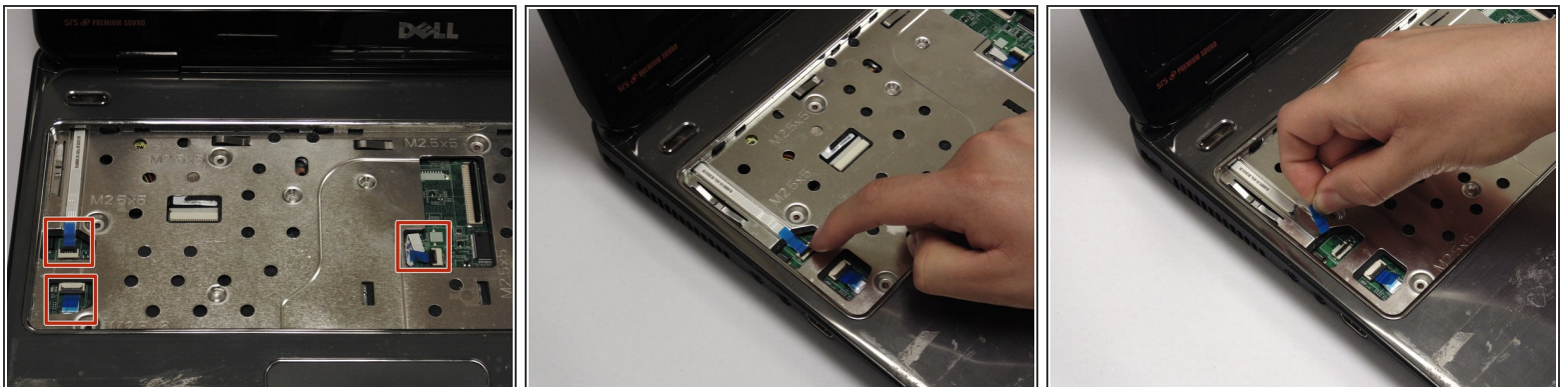
- Turn laptop over and remove the bottom four screw covers outlined in red.
- Then remove the three base screws.

## Step 15



- Turn laptop over and open it. Locate and remove the five palm rest screws.

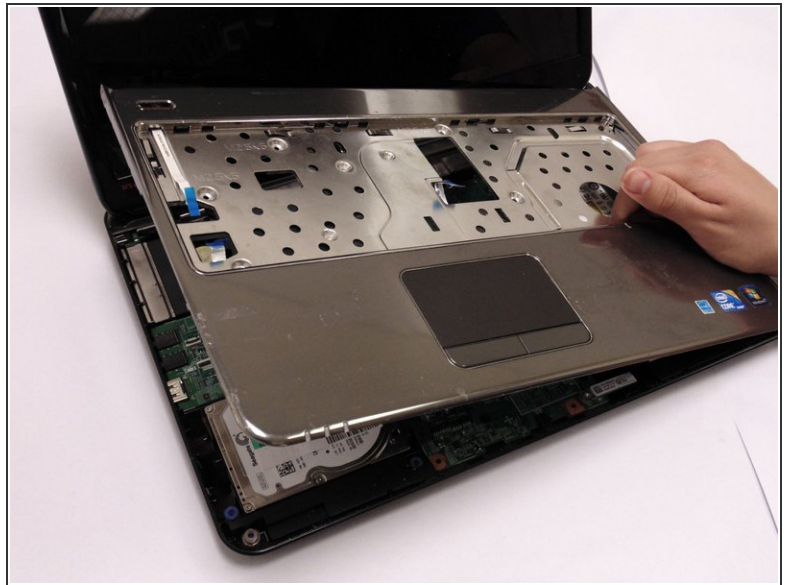
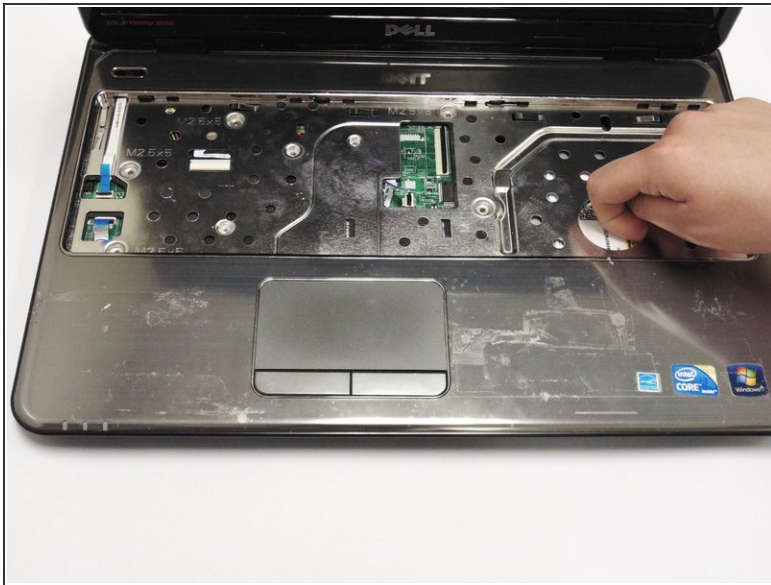
## Step 16



- Locate the palm rest cables. Lift the black levers and unplug the blue cables.



## Step 17



- Lift the palm rest until it snaps off.

## Step 18



- Close cover and turn laptop over. Locate and remove the four hard drive screws.



## Step 19



- Turn laptop over and open it.

## Step 20



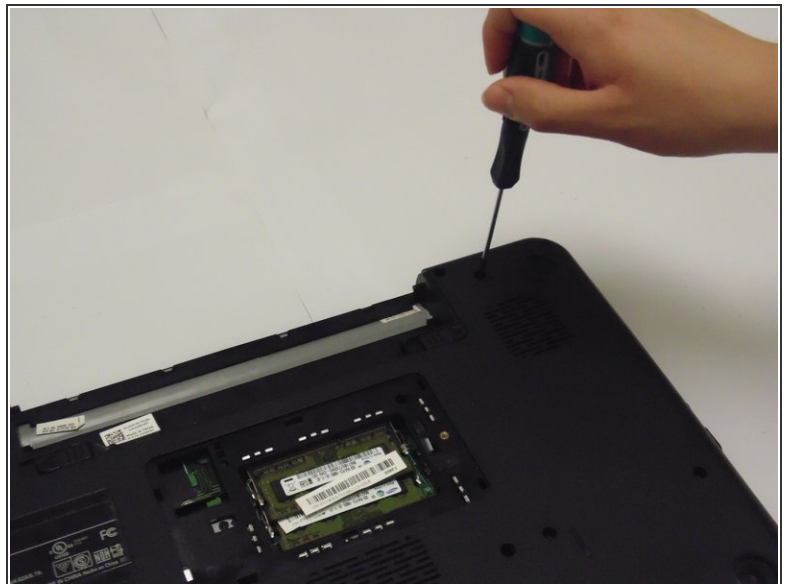
- Lift and remove the hard drive.

## Step 21



- Remove the hard drive connector.

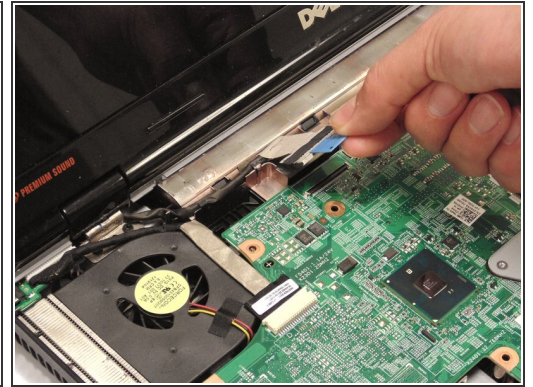
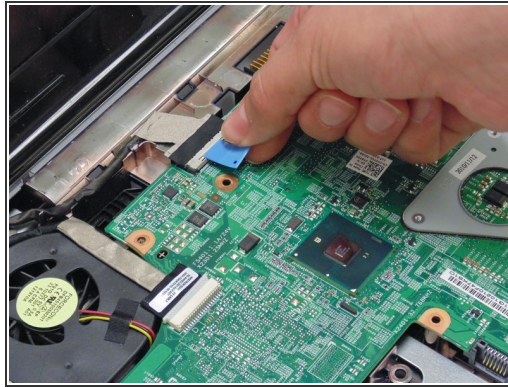
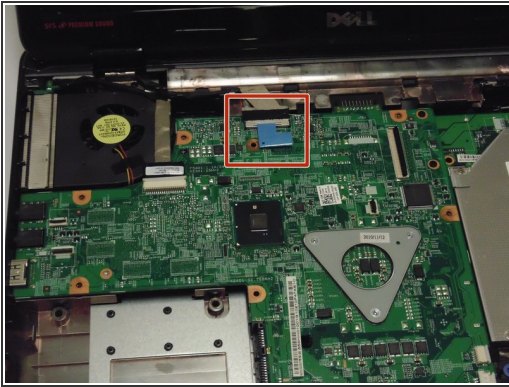
## Step 22 — Screen



- Locate and remove the bottom hinge screws.

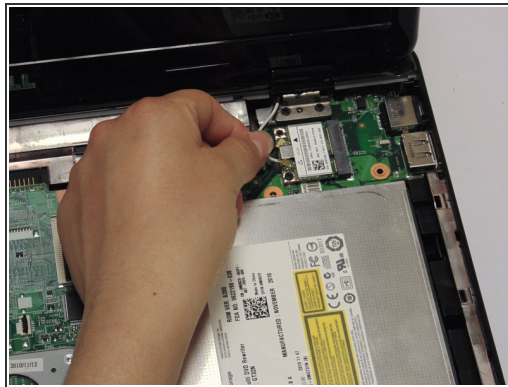
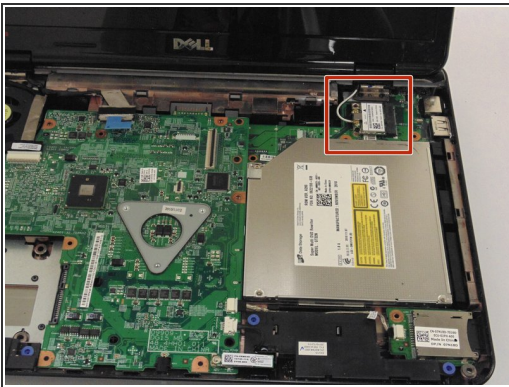


## Step 23



- Turn laptop over and open it. Locate and unplug the LCD Cable.

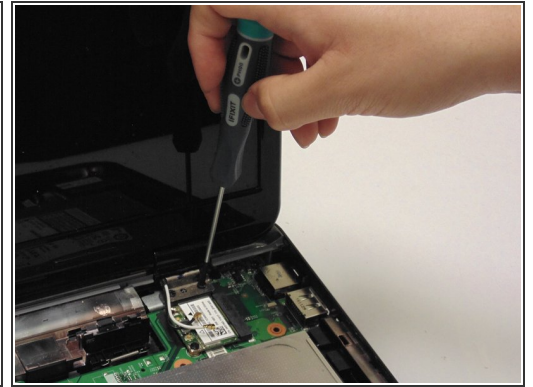
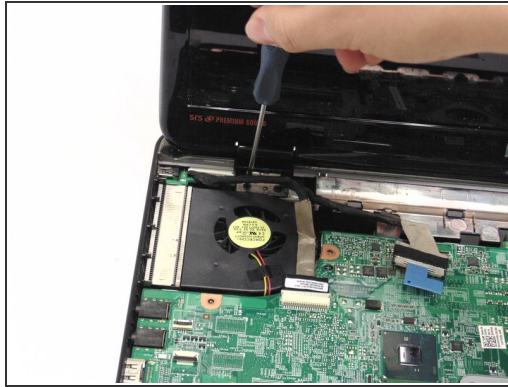
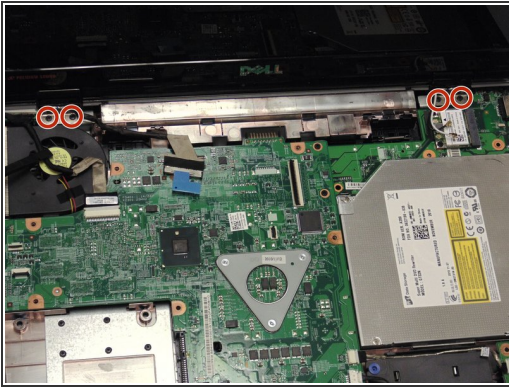
## Step 24



- Unplug the black and white wires on the wireless antenna.



## Step 25



- Remove the two hinge screws on both the left and right hand side.

## Step 26



- Remove the screen.

## Step 27 — Webcam



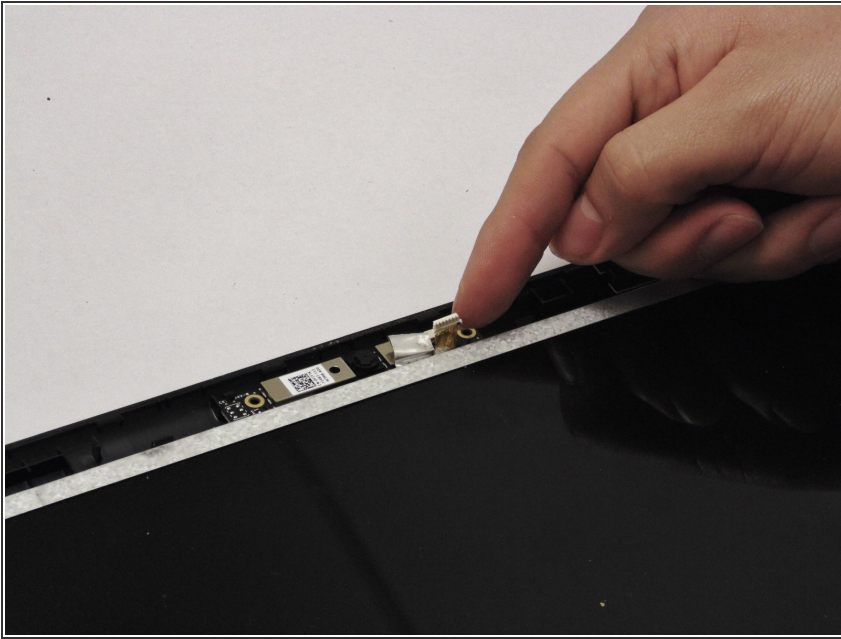
- Unsnap and lift the display bezel around the edges and remove it.

## Step 28



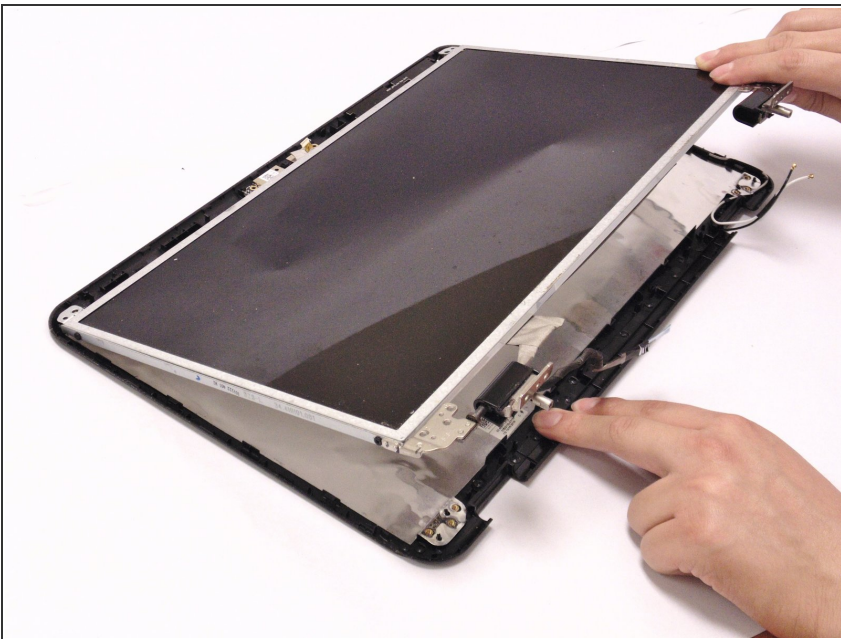
- Locate and remove the eight LCD screws outlined in red.

## Step 29



- Carefully unplug the camera cable.

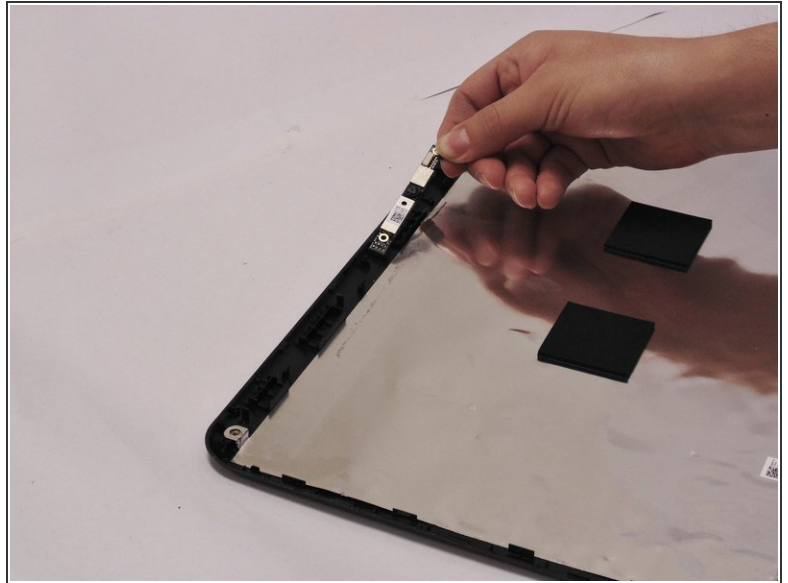
## Step 30



- Lift and remove the LCD screen from the backing.



## Step 31



- Locate and remove the webcam.

To reassemble your device, follow these instructions in reverse order.