



# Dell Inspiron 17 N7010 BIOS Battery Replacement

Written By: Joseph Sctbunio





## TOOLS:

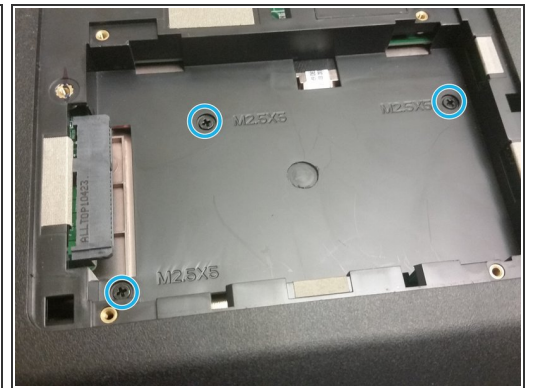
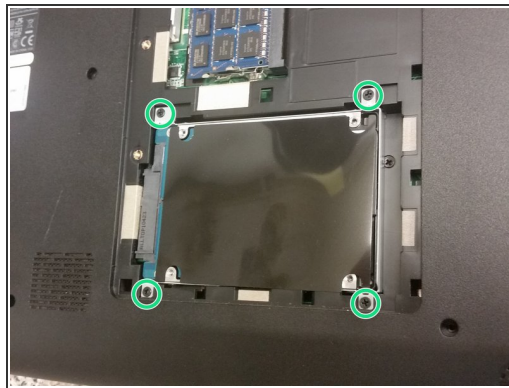
- [Phillips #0 Screwdriver](#) (1)
  - [Spudger](#) (1)
-

## Step 1 — Remove disc drive



- Remove the single Philips screw securing the disc drive.
- Pull the disc drive out.

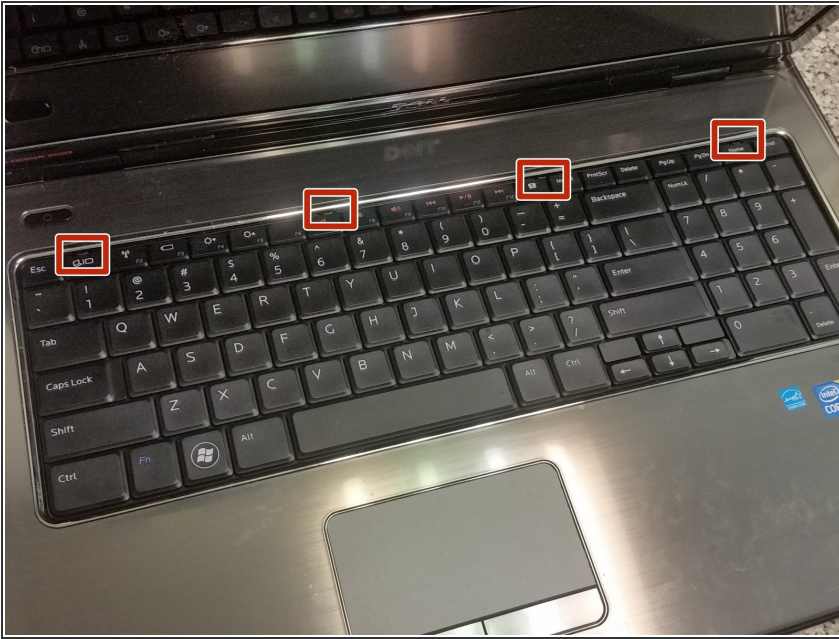
## Step 2 — Remove palmrest screws



- Remove the 22 M2.5x5 Philips screws securing the palmrest to the base.
- Remove the seven remaining M2x2.5 screws securing the palmrest to the base.
- Unscrew the two captive screws securing the RAM/HDD door to the base.
- ⓘ This must be done in order to access hidden screws under the hard drive.
- Under the RAM/HDD door, unscrew the hard drive caddy. Remove the caddy.
- Remove the three M2.5x5 screws from under where the hard drive was.

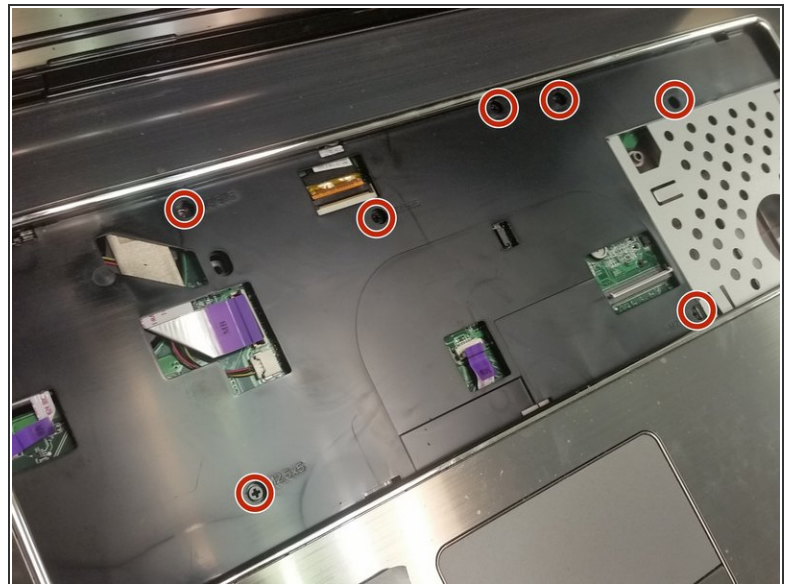
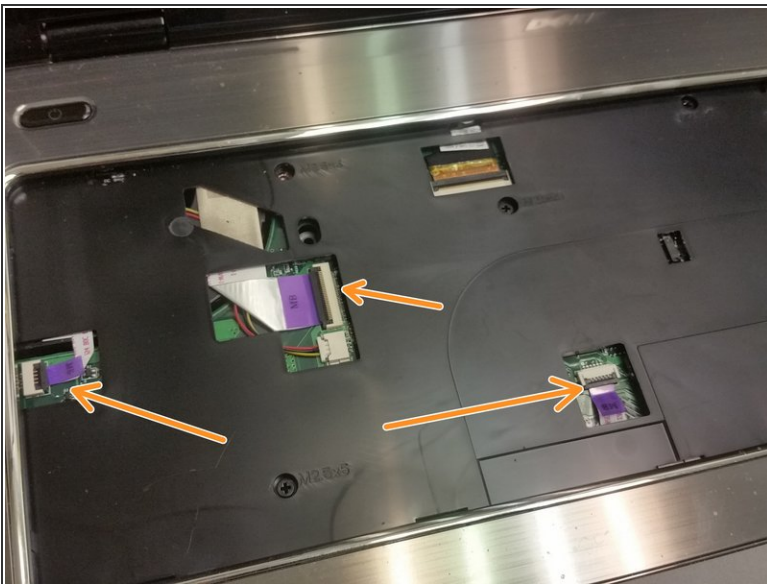


### Step 3 — Remove keyboard



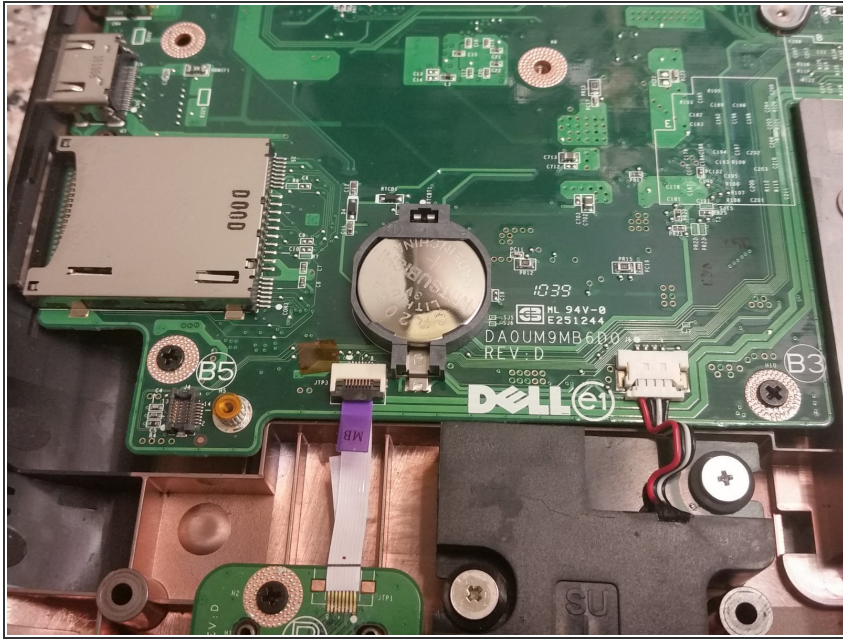
- Pop the four keyboard clips with a plastic spudger. As you do the first one, pry to get under the keyboard with your hand.
- Remove the keyboard cable from the motherboard connector.

### Step 4 — Remove palmrest



- Remove the palmrest cables from the motherboard connectors.
- Remove the seven M2.5x5 screws securing the palmrest to the base.
- Lift the palmrest.

## Step 5 — Replace the cell



- Use a plastic spudger to get under the CR2032 cell and pry it out carefully.

To reassemble your device, follow these instructions in reverse order.