



# Dell Inspiron 17-3721 Hard Drive Replacement

This guide will be showing how to replace a broken or malfunctioning hard drive on the Dell Inspiron 17-3721

Written By: Kevin Prairie



---

## INTRODUCTION

The hard drive is where all the data of the laptop is stored. Without it, or with a broken one, users' devices will not function at all. This guide will show the steps to replace the hard drive on this device.

---



### TOOLS:

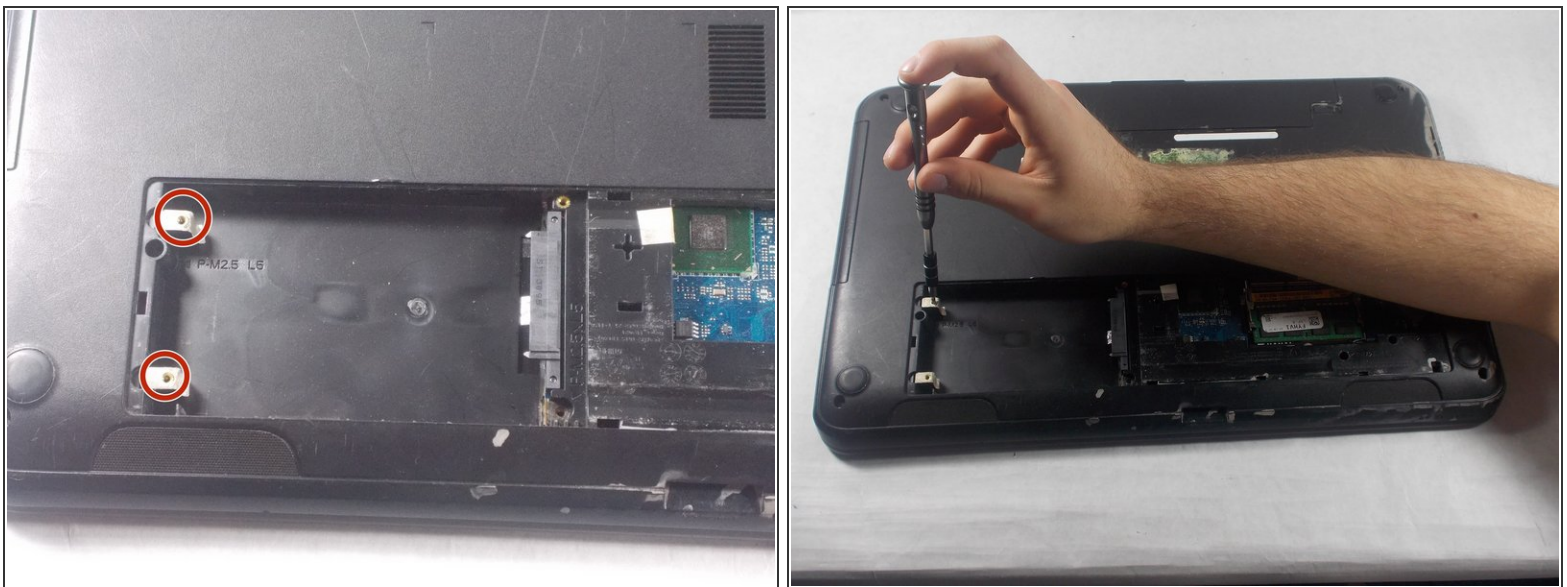
- [Phillips #1 Screwdriver](#) (1)
-

## Step 1 — Hard Drive



- Remove the two 6.5 mm PH1 Philips head screws on the back panel.
- Lift up the small panel from the top, using the plastic opening tools if necessary.

## Step 2



- Remove the two 5.5 mm PH1 Phillips head screws holding in the hard drive.
- Slide the hard drive out of its slot and lift it out of the device.
- ⓘ At the time of the creation of this guide, our device did not include a hard drive.

To reassemble your device, follow these instructions in reverse order.

This document was generated on 2019-12-28 05:22:05 PM (MST).

