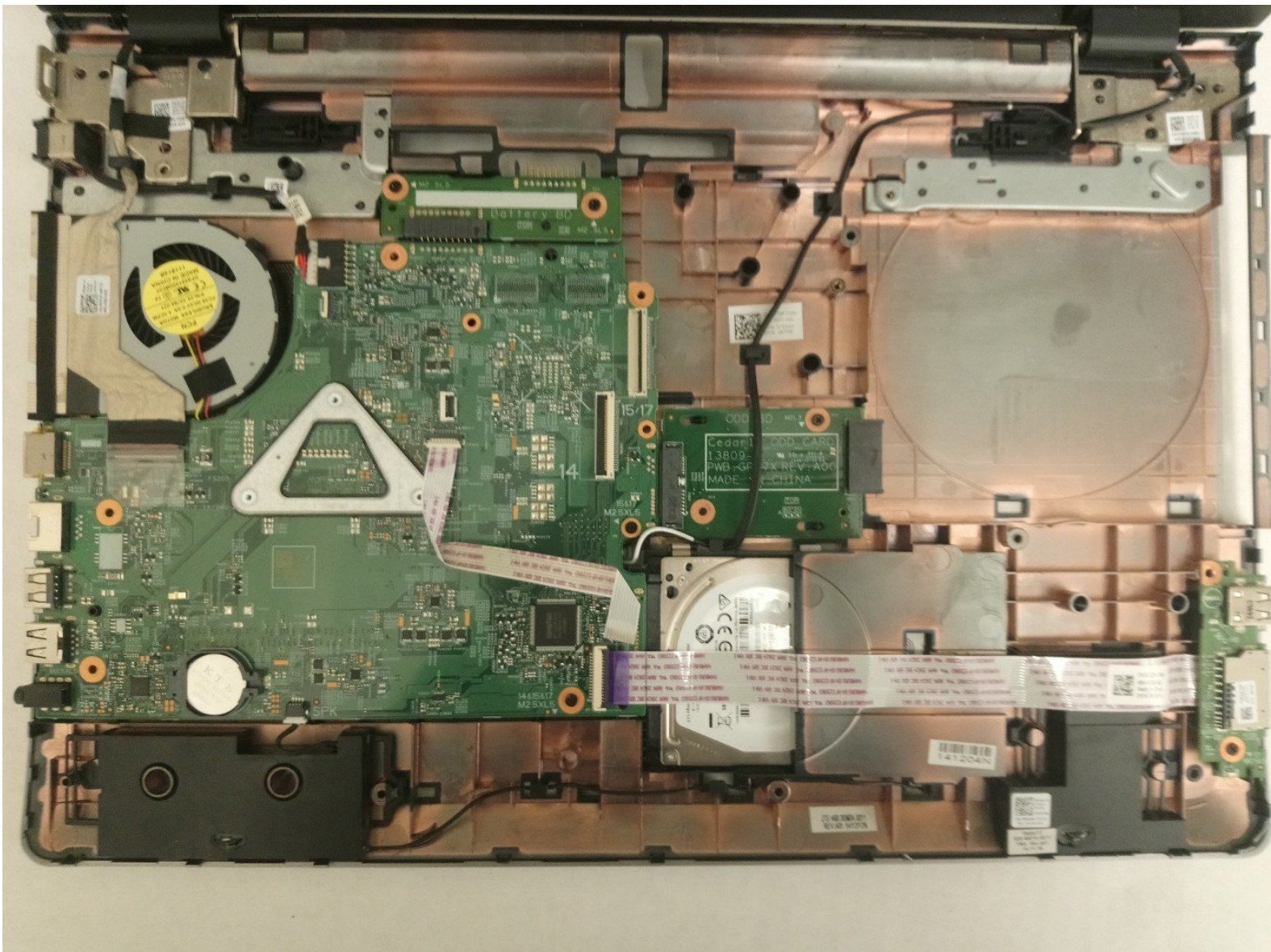




Dell Inspiron 17-5749 Palm Rest Replacement

This guide will instruct users on how to replace/remove a Dell Inspiron 17-5749 palm rest.

Written By: Christopher Tran





TOOLS:

- [iFixit Opening Tools](#) (1)
 - [Phillips #0 Screwdriver](#) (1)
-

Step 1 — Battery



- Turn off power to the laptop.
- Unplug the charging cable from the laptop.
- ⚠ Failure to unplug the charging cable could result in damaging the computer or seriously injuring yourself.
- ⓘ Wear the anti-static wrist strap or work in an uncarpeted area to prevent static shocks. Shocks may damage the components.

Step 2



i First carefully turn the laptop over so you can access the battery.

- Switch each of the battery latches to the "unlocked" position.
- Pull battery upwards by the tab to remove from the laptop.

Step 3 — Back Cover



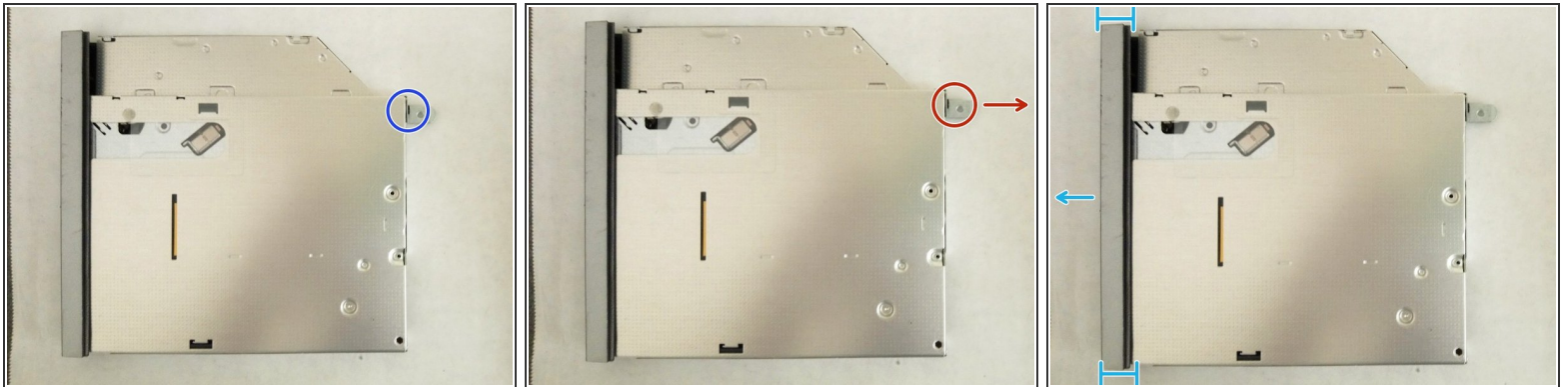
- Remove the two 5.5mm screws that secure the base cover to the computer's base.
- Using the plastic opening tool, carefully pry open the base cover starting from the center.
- Lift the base cover upwards to remove and set it aside.

Step 4 — Optical Drive



- Remove the 5.5mm screw that secures the optical-drive assembly to the computer base
- Using your fingertips, slide the optical-drive assembly out of the optical drive bay.

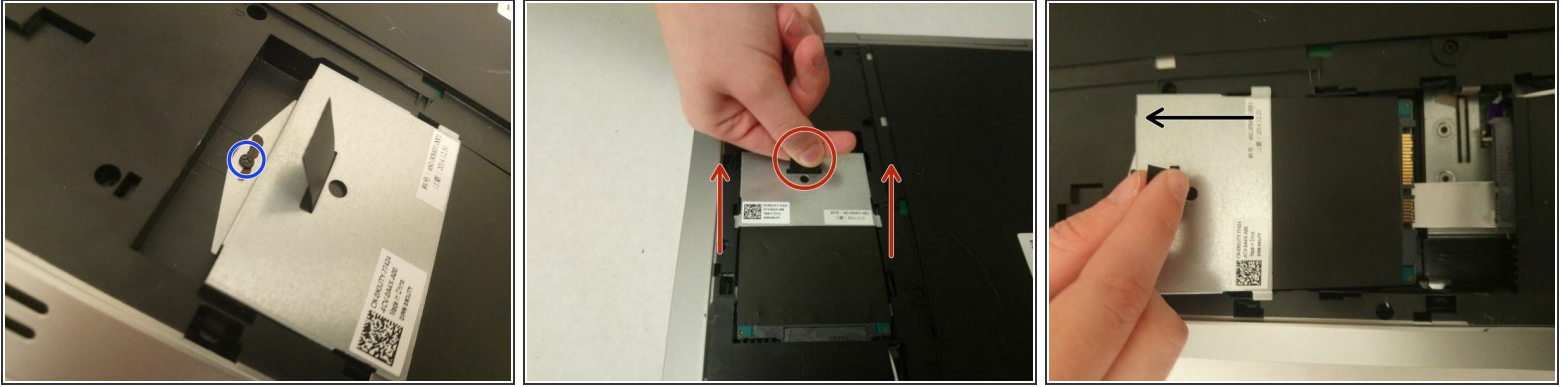
Step 5



***i* This step is only needed if replacing the optical drive.**

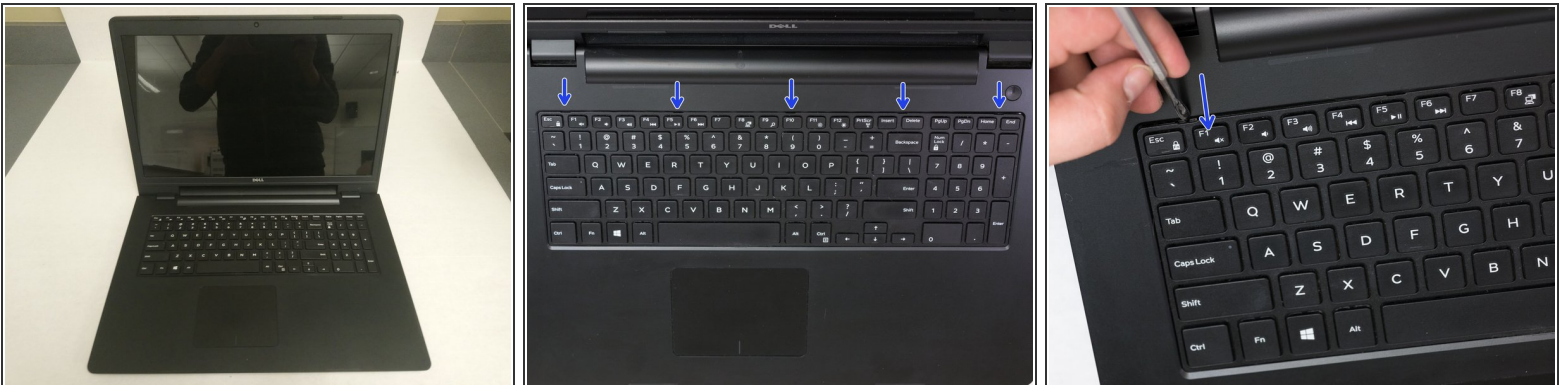
- Remove the 2.5mm screw that secures the optical-drive bracket to the optical drive assembly.
- Remove the optical-drive bracket from the optical-drive assembly.
- Carefully pull the optical-drive bezel and remove it from the optical drive.

Step 6 — Hard Drive



- Remove the 2.5mm screw that secures the hard-drive assembly to the computer base.
- Using the pull tab, slide the hard-drive assembly to disconnect it from the system board.
- Lift the hard-drive assembly off the computer base

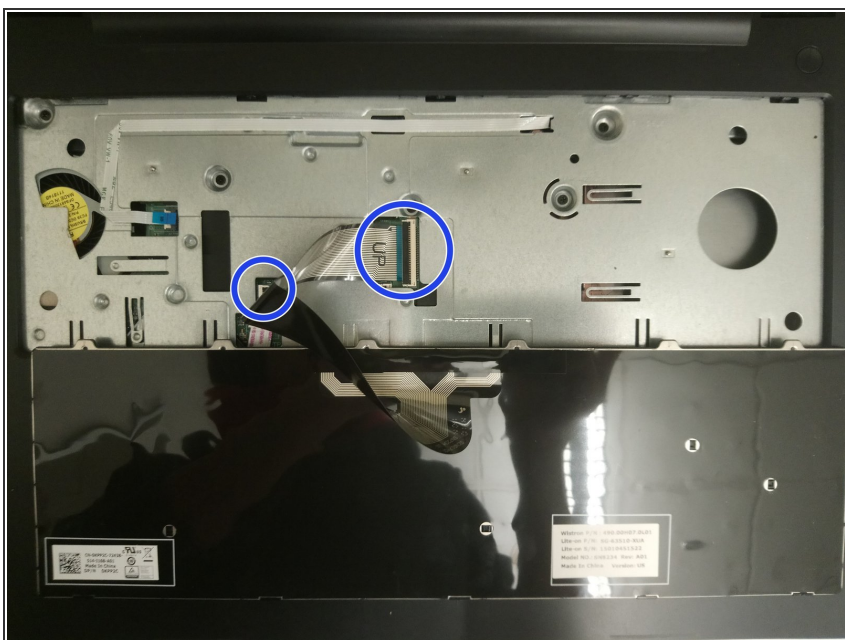
Step 7 — Keyboard



- Turn the computer over and open the display as far as possible
- Using a plastic opening tool, release the tabs that secure the keyboard to the palm-rest assembly.

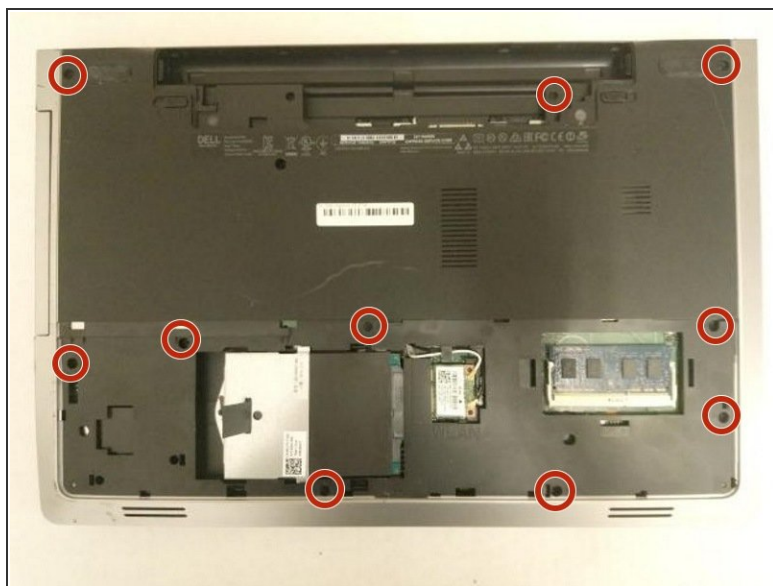
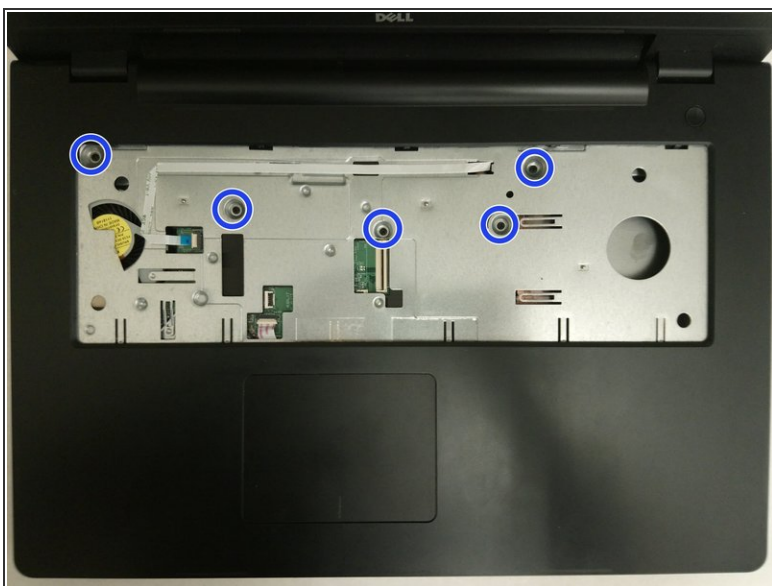
⚠ Before turning over the keyboard, be careful not to pull the keyboard too far away as it could damage the connected ribbon cables.

Step 8



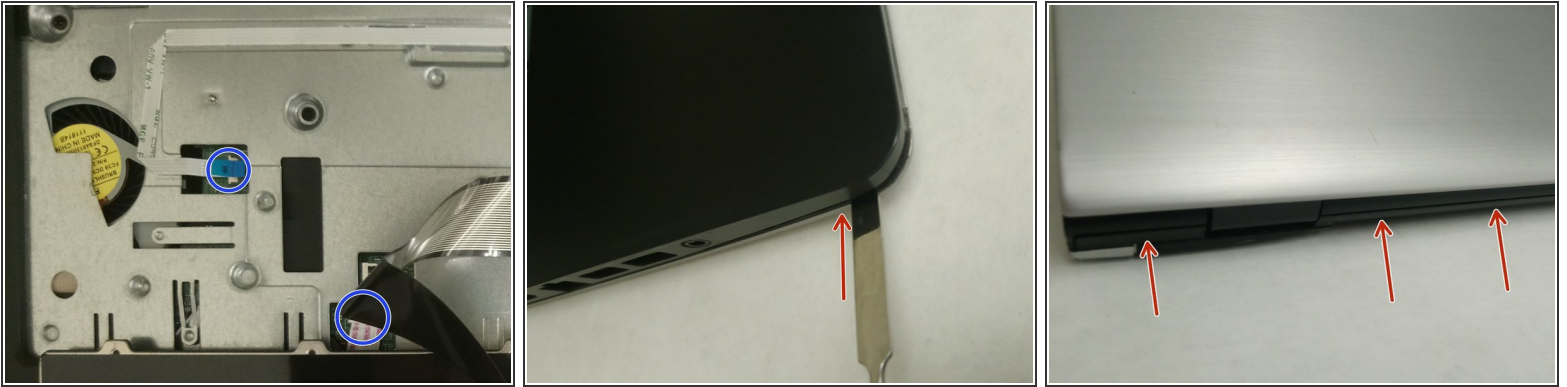
- Carefully turn the keyboard over and place it on the palm rest assembly.
- Lift the latches and disconnect the keyboard cable and keyboard back-light cable from the system board.
- Lift the keyboard along with the cables, off the palm-rest assembly and set it aside.

Step 9 — Palm Rest



- Remove the (5) 5.5mm screws that secure the palm rest to the system board.
- Close the display and turn the computer over.
- Remove the (10) 5.5mm screws that secure the palm rest to the computer base.

Step 10



- Turn the computer over and open the display as far as possible.
- Lift the connector latches and disconnect the power-button board cable and the touch-pad cable from the system board.
- Using a plastic scribe, gently lift and release the tabs on the palm rest around the computer base including the backside.
- Lift the palm rest away from the display assembly.

To reassemble your device, follow these instructions in reverse order.